



Organisation for Economic Co-operation and Development

ENV/JM/MONO(2018)32

Unclassified

English - Or. English

31 October 2018

**ENVIRONMENT DIRECTORATE
JOINT MEETING OF THE CHEMICALS COMMITTEE AND THE WORKING PARTY
ON CHEMICALS, PESTICIDES AND BIOTECHNOLOGY**

WAREHOUSE OF PRODUCT RELEASE AND EXPOSURE DATA

**Series on Testing and Assessment
No. 295**



JT03438624

SERIES ON TESTING AND ASSESSMENT

NO. 295

WAREHOUSE OF PRODUCT RELEASE AND EXPOSURE DATA

IOMC

INTER-ORGANIZATION PROGRAMME FOR THE SOUND MANAGEMENT OF CHEMICALS

A cooperative agreement among **FAO, ILO, UNDP, UNEP, UNIDO, UNITAR, WHO, World Bank and OECD**

Environment Directorate
ORGANISATION FOR ECONOMIC COOPERATION AND DEVELOPMENT
Paris 2018

About the OECD

The Organisation for Economic Co-operation and Development (OECD) is an intergovernmental organisation in which representatives of 35 industrialised countries in North and South America, Europe and the Asia and Pacific region, as well as the European Commission, meet to co-ordinate and harmonise policies, discuss issues of mutual concern, and work together to respond to international problems. Most of the OECD's work is carried out by more than 200 specialised committees and working groups composed of member country delegates. Observers from several countries with special status at the OECD, and from interested international organisations, attend many of the OECD's workshops and other meetings. Committees and working groups are served by the OECD Secretariat, located in Paris, France, which is organised into directorates and divisions.

The Environment, Health and Safety Division publishes free-of-charge documents in eleven different series: **Testing and Assessment; Good Laboratory Practice and Compliance Monitoring; Pesticides; Biocides; Risk Management; Harmonisation of Regulatory Oversight in Biotechnology; Safety of Novel Foods and Feeds; Chemical Accidents; Pollutant Release and Transfer Registers; Emission Scenario Documents; and Safety of Manufactured Nanomaterials.** More information about the Environment, Health and Safety Programme and EHS publications is available on the OECD's World Wide Web site (www.oecd.org/chemicalsafety/).

This publication was developed in the IOMC context. The contents do not necessarily reflect the views or stated policies of individual IOMC Participating Organizations.

The Inter-Organisation Programme for the Sound Management of Chemicals (IOMC) was established in 1995 following recommendations made by the 1992 UN Conference on Environment and Development to strengthen co-operation and increase international co-ordination in the field of chemical safety. The Participating Organisations are FAO, ILO, UNDP, UNEP, UNIDO, UNITAR, WHO, World Bank and OECD. The purpose of the IOMC is to promote co-ordination of the policies and activities pursued by the Participating Organisations, jointly or separately, to achieve the sound management of chemicals in relation to human health and the environment.

This publication is available electronically, at no charge.

Also published in the Testing and Assessment [link](#)

**For this and many other Environment,
Health and Safety publications, consult the OECD's
World Wide Web site (www.oecd.org/chemicalsafety/)**

or contact:

**OECD Environment Directorate,
Environment, Health and Safety Division
2 rue André-Pascal
75775 Paris Cedex 16
France**

Fax: (33-1) 44 30 61 80

E-mail: ehscont@oecd.org

© OECD 2018

Applications for permission to reproduce or translate all or part of this material should be made to: Head of Publications Service, RIGHTS@oecd.org, OECD, 2 rue André-Pascal, 75775 Paris Cedex 16, France
OECD Environment, Health and Safety Publications

Foreword

In 2010 and 2011, the OECD's Working Party on Exposure Assessment (WPEA, formerly Task Force on Exposure Assessment (TFEA)) conducted two surveys: a survey to compile available data on emissions and releases from products and articles; and a survey to compile available exposure-related information on plasticizers. Results of these surveys were presented at the TFEA meeting in 2012. As a follow-up project to these surveys, the TFEA agreed to develop a database to store information collected from these surveys.

The US Environmental Protection Agency lead the follow-up project and developed a Microsoft Access database that houses release and migration rates of chemicals from products, with corresponding exposures, that are relevant for assessment of exposure from chemicals in products. The database was designed to be flexible to house not only information from sources referenced in the surveys but also other sources of information. A User Guide for the database was also developed.

This document and the database was prepared under the supervision of the WPEA, and published under the responsibility of the Joint Meeting of the Chemicals Committee and the Working Party on Chemicals, Pesticides and Biotechnology of the OECD. The database is expected to be updated annually with relevant data provided by the WPEA.

Executive Summary

Database Structure

The Data Warehouse is a Microsoft® Access 2016 database designed to house existing data on releases of chemicals from, and exposures to, commercial and consumer end products. A number of forms provide a simple approach to data entry and access to the existing data. In addition to the Main Menu, there are five forms in which a user can enter or update information on a specific study.

Form 1 collects the following general information on the study:

- Organization submitting information on the study, including the country that is submitting the study and the respective company or agency,
- Title of Study or Report, supplemental information on the authors of the study,
- Geographic scope of the study,
- Primary point of contact, website and additional information on the study, if applicable,
- Abstract that summarizes the objectives of the study and the findings related to general, product- and/or chemical-specific release and exposure information.

Form 2 is an optional form, which allows storing information on end products in the study. This includes the product-specific release or exposure data that are included in the study.

Form 3 is also an optional form, which compiles information on chemical-specific release or exposure data in the study. Information could be stored by chemical name and/or CAS number. This form also collects information on the composition of the chemical in an end product or in a mixture of chemicals assessed as part of the study.

The Summary of Release Information window provides a summary of the existing release information for the specific study, end product, and selected chemical. From this window, a user may add new information or edit/review existing information, which will lead to the appropriate Form 4 containing the detailed information. Form 4 is designed to allow a user to add multiple scenarios for each combination of product and chemical for this study.

Finally, the Summary of Exposure Information window provides a summary of the existing exposure information for the specific study, end product, and selected chemical. It is structured similarly to the Summary of Release Information window and Form 4. Form 5 is also designed to allow a user to add multiple scenarios for each combination of product and chemical for this study.

Data Dictionary

The Data Dictionary describes the type of information and specific format that would be requested from users submitting data.

User Guide

The User Guide in 0 was prepared to help users navigate through the process of entering new study information, updating existing study information, and accessing summaries of available data using the database forms.

Benefits and Uses of the Database

The database provides a flexible, easy-to-use venue for entering, storing and searching information and data on emissions and associated exposures of chemicals from commercial and consumer products.

It can be used as a source of information for quickly identifying available studies and data on emissions and associated exposures from commercial and consumer products for exposure assessment purposes.

*Annex A: User Guide to the OECD Product Release and
Exposure Data Warehouse*

Table of Contents

Table of Contents	10
1. Introduction	11
2. Database Contents and Form Relationships	12
3. Main Menu	13
4. Form 1: Enter Study Information	15
5. Form 2: Identify End Products Studied	17
6. Form 3: Identify Chemicals Studied	19
7. Summary of Release Information and Form 4: Detailed Release Information	22
8. Summary of Exposure Information and Form 5: Detailed Exposure Information	26
9. Data Dictionary for Form Elements	31

Figures

Figure 1. Relationship between Forms in the OECD Product Release and Exposure Data Warehouse	12
Figure 2. Main Menu	13
Figure 3. Import feature.....	14
Figure 4. Form 1: Enter Study Information.....	15
Figure 5. Form 2: Identify End Products Studied.....	17
Figure 6. Form 3: Identify Chemicals Studied	19
Figure 7. Form 3: Element B Expanded	19
Figure 8. Form 3 Pop-up: Lookup Chemical Table.....	20
Figure 9. Summary of Release Information Window.....	23
Figure 10. Form 4: Detailed Release Information	24
Figure 11. Form 4: Element I Expanded	25
Figure 12. Summary of Exposure Information Window	27
Figure 13. Form 5: Detailed Exposure Information	29
Figure 14. Form 5: Element H Expanded.....	30

1. Introduction

Welcome to the OECD Product Release and Exposure Data Warehouse. The Data Warehouse is a Microsoft® Access 2016 database designed to house existing data on releases of chemicals from, and exposures to, commercial and consumer end products. This User Guide will help you navigate through the process of entering new study information, updating existing study information, and accessing summaries of available data using database forms.

In addition to the Main Menu, there are five forms in which you can enter or update information on a specific study:

- Form 1: Enter Study Information
- Form 2: Identify End Products Studied
- Form 3: Identify Chemicals Studied
- Form 4: Detailed Release Information
- Form 5: Detailed Exposure Information

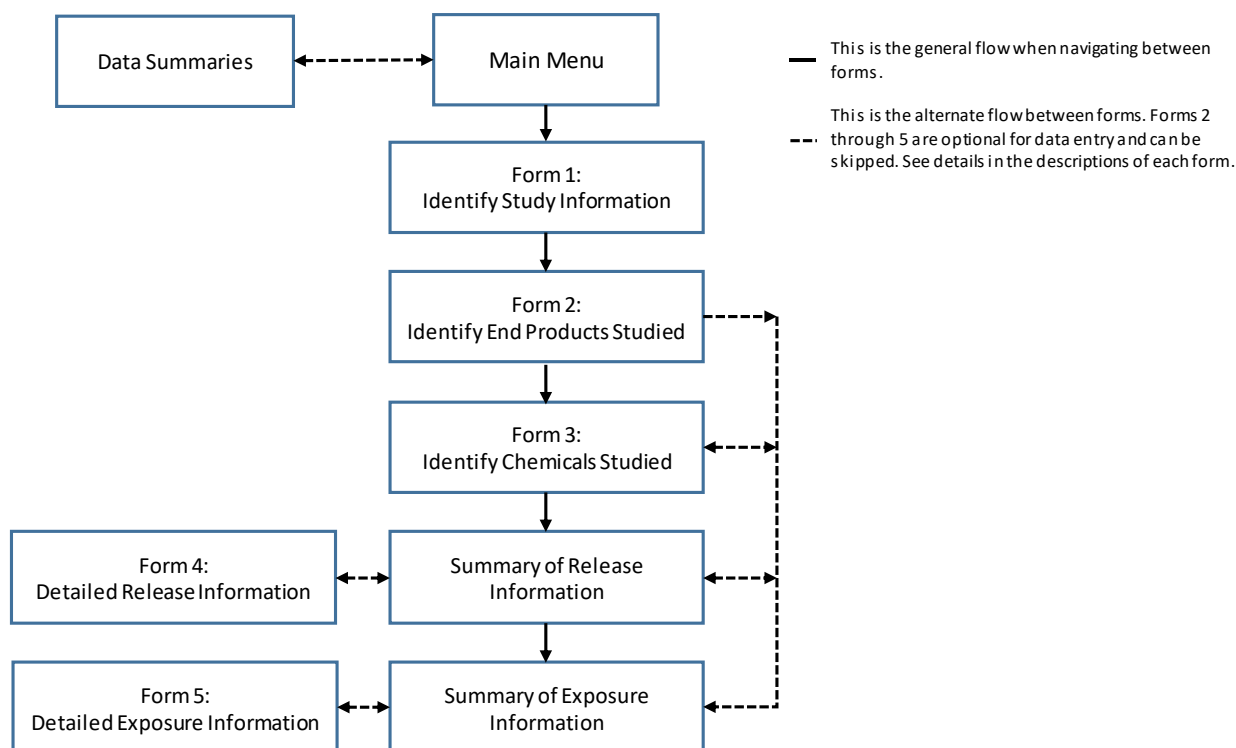
This User Guide presents screen shots of the forms and describes the individual data elements in each of these forms so you can enter new or update existing information and develop summaries of this information to fit your assessment needs.

2. Database Contents and Form Relationships

To access the forms, open the database in Microsoft® Access 2007 or a newer version. When prompted, update your security options by enabling the content after you open the database¹.

Figure 1 illustrates the relationship and flow of the forms contained in the database. They are designed to populate backend (hidden) database tables while you enter information into the forms. The forms provide a simple approach to data entry and access to the existing data.

Figure 1. Relationship between Forms in the OECD Product Release and Exposure Data Warehouse



¹ Security settings may be different on each computer. You may receive a security warning when you open the Data Warehouse indicating that “Some active content has been disabled.” In order to access the database forms and its contents, select the “Enable this content” button next to the security warning.

3. Main Menu

By default, the Main Menu will automatically open when you open the database. As illustrated in Figure 2, the Main Menu provides a summary of studies that currently exist in the database. The term “study” can include technical articles, assessment reports, or survey results. From the Main Menu, you can enter new study information or select a study that was previously entered.

Figure 2. Main Menu

OECD Product Release and Exposure Data Warehouse
Main Menu
 This database is an evolving repository of release and exposure data collected and submitted by OECD member countries.

Double-click a reference in the list below to edit or review that reference. Or click Add New to enter a new reference.

Study Title
Test
Test Study One
Test Study Two
Test Study Three

Buttons: Add New Study, Delete Study, Edit/Review Study, Access Data Summaries, Import Data.

Main Menu Elements

- A: Study list
- B: Navigation buttons (Add New Study, Delete Study, Edit/Review Study, Access Data Summaries)
- C: Import Data button

Main Menu Elements

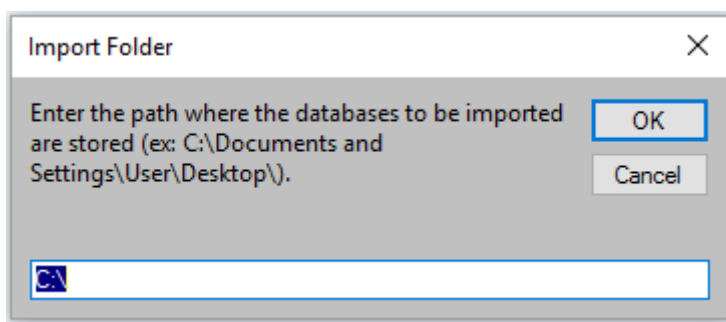
- Shows you the studies that currently exist in your database. Each study is uniquely identified by a Study ID.
- There are four navigation buttons that you can use to navigate away from the Main Menu. If adding a new study, click on Add New Study. If deleting an existing study, select the study and click on Delete Study. If editing or reviewing an existing study, select the study and then click on Edit/Review Study. To see an overview of data currently included in the database, click on Access Data Summaries.

- C. Allows you to disseminate multiple copies of the database to additional users for data entry and at completion, compile the information from the database copies into one central database (see below).

Import Feature

The import feature allows you to combine study information entered in multiple databases into a centralized database. To import data, first save the database(s) to be imported in a file location separate from the master database. Then, click Import Data and enter the file path where these database(s) are stored (Figure 3). Note the import routine will attempt to import data from all files from the specified file path and will not check for duplicate data between the files.

Figure 3. Import feature



4. Form 1: Enter Study Information

Form 1 allows you to enter general information on the study (Figure 4). If you selected to edit or review an existing study from the Main Menu, Form 1 will automatically display the information that was previously entered for that study. If you selected to add a new study, Form 1 will open as an empty form. Enter the appropriate information (where available) about the study into Form 1. Note that the only required element in this form in order to navigate to the next form is the Title of Study or Report.

Figure 4. Form 1: Enter Study Information

OECD Product Release and Exposure Data Warehouse

Form 1: Enter Study Information

Instructions: Complete this form with general information on your study. As you navigate through subsequent forms, you will be able to submit more specific details on your study.
Note: You may go back to the main menu at any time by clicking "Go Back to Menu"

Submitting Country

Company or Agency Affiliation

GENERAL STUDY INFORMATION

Add a new record for each study that you are submitting to this data warehouse.

* Title of Study or Report

Author(s)

What is the status of the study?

Publication Date or Anticipated Publication Date

Indicate all countries covered in the study:
 Canada
 France
 Germany
 Japan
 U.K.
 U.S.

 Other:

Provide the primary contact for this study.

Primary contact email:

Website location:

Provide the abstract below:

What were the key findings of the study?

* Required field

Form 1 Elements

A

B

C

D

E

F

Form 1 Elements

- A. Collects information on the organization submitting information on the study, including the country that is submitting the study and the respective company or agency.
- B. Title of Study or Report. The study title must be completed since it is carried through to subsequent forms as Study: [Title of Study]. Also includes supplemental information on the authors of the study, whether the study is ongoing or complete, and the date the study was published.
- C. Lists the geographic scope of the study. Select the country (or countries) that are relevant to the study. If a country is not listed, select 'Other' and list each of the countries separated by a semicolon (;).
- D. Identifies information for the primary point of contact to discuss details of the study if questions arise. Also includes website URL to download and/or locate additional information on the study, if applicable.
- E. Requests an abstract that summarizes the objectives of the study and the findings related to general, product- and/or chemical-specific release and exposure information.
- F. Navigation buttons to go to the next form (Form 2: Identify End Product Studied) or to Go Back to Menu (Main Menu).

5. Form 2: Identify End Products Studied

Form 2 is an optional form (Figure 5). If your study contains product-specific release or exposure data, you can enter all the end products included in your study and report these results by end product. Note that the title of the study from Form 1 is identified underneath the instructions for Form 2. Although this form is optional, in order to navigate to the next form, you must choose to skip this form or select an end product.

Figure 5. Form 2: Identify End Products Studied

OECD Product Release and Exposure Data Warehouse

Form 2: Identify End Products Studied

Instructions: Identify end products in your study for which release and exposure data are available. You may enter product-specific release and exposure data on subsequent forms. If your study does not report product-specific data, select the check box to skip to the next step. Note: You may go back to the main menu at any time by clicking "Go Back to Menu."

Study: Test

This study does not identify product-specific release and exposure data Skip to Next

END PRODUCTS INCLUDED IN THE STUDY

The table below lists the end products that have already been added for the study listed above. You may add or edit this list directly in the table. For each end product for which chemical-specific release or exposure data are available, place your cursor next to the end product and select "Next."

Product Description	Other Description
Adhesives and sealants - Two-component	
Agricultural products - Non-pesticidal	
Air care products - Instant action air freshener	
Articles	
*	

Go Back to Update General Study Information

Add Chemical-Specific Information for the Selected Product >>>

Go Back to Menu

Form 2 Elements

A

B

C

Form 2 Elements

- A. If your study “does not identify product-specific release and exposure data”, Skip to Next form (Form 3: Identify Chemicals Studied). Click on the check box to activate this navigation button. In doing so, you will not be able to enter end products described in Form 2 Element B and you will deactivate the navigation buttons described in Form 2 Element C. When you skip this form, subsequent forms will identify the product as Product: Not specified.

- B. Provides a drop-down list in the Product Description column to select end products that are included in your study. Add a separate record for each end product or group of end products for which you have additional release and exposure information. Where the end products are not listed in Product Description, select Not Listed (Add Description) in the drop-down list and provide a description in the Other Description field.

For instances where you may have general (non-product-specific) and product-specific information to add from the study, you can enter both types of information by toggling the check box associated with Form 2 Element A.

- C. Navigation buttons to go to Add Chemical-Specific Information for the Selected Product (Form 3), or to Go Back to Updated General Study Information (Form 1), or to Go Back to Menu (Main Menu). In order to go to Form 3, first select the end product for which you would like to add information and then click “Next”. The end product is carried through to subsequent forms as Product: [Selected End Product].

6. Form 3: Identify Chemicals Studied

Form 3 is an optional form (Figure 6-7). If your study contains chemical-specific release or exposure data, you can identify all the chemicals included in your study and report these results by chemical. Note that the title of the study from Form 1 and the specified end product from Form 2 are identified underneath the instructions for Form 3. Although this form is optional, in order to navigate to the next form, you must choose to skip this form or select a chemical.

Figure 6. Form 3: Identify Chemicals Studied

OECD Product Release and Exposure Data Warehouse

Form 3: Identify Chemicals Studied

Instructions: Identify chemicals in your study for which release and exposure data are available. You may enter chemical-specific release and exposure data on subsequent forms. If your study does not report chemical-specific data, select the check box to skip to the next step. Note: You may go back to the main menu at any time by clicking "Go Back to Menu."

Study: Test

Product: Agricultural products - Non-pesticidal

This study does not identify chemical-specific release and exposure data Skip to Next

CHEMICALS IN END PRODUCTS INCLUDED IN THE STUDY

The table below lists the chemicals that have already been added for the study and product listed above with related product concentrations. You may add or edit the information directly in the table. Use "Lookup Chemical" to identify and ADD the chemical name and CAS numbers into the table, as needed.

Lookup Chemical

*	Chemical Name	CAS Number	Statistical Descriptor	Chemical Concentration Value	Unit.	Chemical

<<< Go Back to Add Chemical-Specific Information for Your Other Products
Add Release and Exposure Information for the Selected Chemical >>>

Go Back to Menu

Form 3 Elements

A

B
(Expanded below)

C

Figure 7. Form 3: Element B Expanded

*	Chemical Name	CAS Number	Statistical Descriptor	Chemical Concentration Value	Unit.	Chemical Category	Other Description

Figure 8. Form 3 Pop-up: Lookup Chemical Table

Lookup Chemical

Click a chemical in the list below and click Select Chemical to populate the chemical field on Form 3 and close this window. Click Close Window to exit this window without selecting a chemical.

Chemical Name	CAS Number
Formaldehyde	50-00-0
Guanidine, hydrochloride (1:1)	50-01-1
Pregna-1,4-diene-3,20-dione, 9-fluoro-11,17,21-trihydroxy-16-methyl-, (11.alpha.)-	50-02-2
Azirino[2',3':3,4]pyrrolo[1,2-a]indole-4,7-dione, 6-amino-8-[[[aminocarbonyl]amino]oxy]methyl-	50-07-7
Cyclohexanol, 4-methylene-3-[(2E)-2-[(1R,3aS,7aR)-octahydro-7a-methyl-2H-indeno[1,2-b]pyridin-2-ylidene]ethyl]oxy-	50-14-6
Propanoic acid, 2-hydroxy-	50-21-5
Pregna-4-ene-3,20-dione, 11,17,21-trihydroxy-, (11.beta.)-	50-23-7
Pregna-1,4-diene-3,20-dione, 11,17,21-trihydroxy-, (11.beta.)-	50-24-8
Benzene, 1,1'-(2,2,2-trichloroethylidene)bis[4-chloro-	50-29-3
Benzo[a]pyrene	50-32-8
3,5-Pyrazolidinedione, 4-butyl-1,2-diphenyl-	50-33-9
2-Propanaminium, N-methyl-N-(1-methylethyl)-N-[2-[[9H-xanthen-9-ylidene]amino]ethyl]-, sulfate (2:1)	50-34-0
Cinchonan-9-ol, 6'-methoxy-, (9S)-, sulfate (2:1)	50-54-4
Yohimban-16-carboxylic acid, 11,17-dimethoxy-18-[[3,4,5-trimethoxybenzoyl]oxy]-	50-55-5
D-Ribose	50-69-1
D-Glucitol	50-70-4
2,4,5,6(1H,3H)-Pyrimidinetetrone	50-71-5
Benzoic acid, 2-(acetyloxy)-	50-78-2
Benzoic acid, 2,5-dichloro-	50-79-3
L-Ascorbic acid	50-81-7
Benzoic acid, 2,4-dichloro-	50-84-0

Select Chemical Close Window

Form 3 Elements

- If your study “does not identify chemical-specific release and exposure data”, click on the check box and Skip to Next (Form 4: Summary of Release Information). When you click on the check box, it will activate the Skip to Next navigation button. In doing so, you will not be able to enter chemical information described in Form 3 Element B and you will deactivate the navigation buttons described in Form 3 Element C. When you skip this form, subsequent forms will identify the chemical as Chemical: Not specified.
- Provides a lookup function (Lookup Chemical) to identify the chemical name and CAS Number, which you can select from a pop-up window (Figure 8). Once the chemical is selected, it will auto-populate in the form under Chemical Name and CAS Number. This form element also collects information on the composition of the chemical in an end product or in a mixture of chemicals assessed as part of the study. In Figure 7, there are additional options to enter the Chemical Concentration and to select a Chemical Category (from a drop-down list) for which study results are available. When entering Chemical Concentration, select the appropriate statistical descriptor and unit associated with the value being entered, or enter a user-defined statistical descriptor and unit. Where a chemical category is not listed, select “Other” in the drop-down list and provide a description in the Other Description field.
- For instances where you may have general (non-chemical-specific) and chemical-specific information to add from the study, you can enter both types of information by toggling the check box associated with Form 3 Element A.

- D. Navigation buttons to go to Add Release and Exposure Information for the Selected Chemical (Form 4) or to Go Back to Add Chemical-Specific Information for Your Other Products (Form 2) or to Go Back to Menu (Main Menu). In order to go to Form 4, first select the chemical for which you would like to add information and then click “Next”. The chemical is carried through to subsequent forms as Chemical: [Selected Chemical or Chemical Category].

7. Summary of Release Information and Form 4: Detailed Release Information

The Summary of Release Information window provides a summary of the existing release information for the specific study, end product, and chemical that was previously selected. From this window, you may add new information or edit/review existing information, which will lead you to the appropriate Form 4 containing the detailed information. Note that the title of the study from Form 1, the specified end product from Form 2, and the chemical from Form 3 are identified underneath the instructions for the Summary of Release Information window and for Form 4. The Summary of Release Information window (Figure 9) summarizes release scenarios for the specified product and chemical you selected in this study. Form 4: Detailed Release Information (Figure 10-11) contains a detailed summary of the selected release scenario from the Summary of Release Information window.

Form 4 is designed to allow you to add multiple scenarios for each combination of product and chemical for this study. To add release or exposure scenarios for a different chemical and/or product, you may Add Release Information for Other Chemicals or End Products in this Study (Form 3), then Add Release Information for Other Chemicals or End Products in this Study (Form 2) to select a new combination.

Figure 9. Summary of Release Information Window

OECD Product Release and Exposure Data Warehouse

Summary of Release Information

Instructions: Add release information for your study. If your study does not have release data, select the check box to skip to the next step. Note: You may go back to the main menu at any time by clicking "Go Back to Menu."

Study: Test

Product: Agricultural products - Non-pesticidal

Chemical: Nitric acid ammonium salt (1:1)

This study does not identify release information. [Skip to Next](#)

RELEASE INFORMATION INCLUDED IN THE STUDY

Below is a summary of release information currently added for this study. Place the cursor next to the record you would like to update and select "Edit/Review Data" or add new release information for this study by selecting "Add Release Data."

Media of Release	Type of Release Information	Results measured or estimated?	Scale of testing

[Add Release Data](#) [Edit/Review Data](#)

[<<< Add Release Information for Other Chemicals or End Products in this Study](#) [Add Exposure Information for this Study >>>](#)

[Go Back to Menu](#)

Elements

A

B

C

D

Summary of Release Information - Elements

Note that this screen is just an informational window that summarizes the release information that currently exists for this study and scenario.

- If your form “does not identify release information,” Skip to Next (Summary of Exposure Information). This will also skip Form 4: Detailed Release Information. Click on the check box to activate this navigation button. In doing so, you will not be able to enter release information in the table associated with Form 4 Element B and you will deactivate the navigation buttons associated with Form 4 Element D.
- Lists a general summary of the release scenarios included for the specified product and chemical for this study.
- If adding a new release scenario, click on Add Release Data. If editing or reviewing an existing scenario, select the scenario and then click on Edit/Review Data. When you click Add Release Data or Edit/Review Data, Form 4: Detailed Release Information will open. See Elements E through K for descriptions.

D. Navigation buttons to Add Exposure Information for this Study (Summary of Exposure Information window) or to Add Release Information for Other Chemicals or End Products in this Study (Form 3) or to Go Back to Menu (Main Menu).

Figure 10. Form 4: Detailed Release Information

OECD Product Release and Exposure Data Warehouse

Form 4: Detailed Release Information

Instructions: Provide additional information on the releases presented in this study, including release parameters or models used in the development of the results.

Study: Test

Product: Agricultural products - Non-pesticidal

Chemical: Nitric acid ammonium salt (1:1)

What type of release or migration data are you submitting?

Results measured or estimated?

What is the basis of the results? (e.g., bench scale, pilot scale, full scale)

Statistical Descriptor	Release Value	Unit
*		

Select a statistical descriptor or unit value from the lists provided, or enter a user-defined value.

Provide a description of the the source of release or migration, e.g., migration from food-grade plastic packaging; Releases from equipment washes

Number of data points (that makes up the value range presented for this factor):

Provide the sampling method used to obtain the results presented in this study.

For release data only:

Environmental medium of release:

Number of sites:

For the above release data, provide a list of parameters or conditions under which the results were developed.

Parameter of Study	Other Parameter (add description)	Statistical Descriptor	Release Parameter Value	Unit
*				

For the above release data, provide a list relevant models used in the estimation of your parameters or results.

Provide the name of your release model.
*

<<< Add More Release Information for this Study

Go Back to Menu

Form 4 Elements

E

F

G

H

I
(Expanded below)

J

K

Figure 11. Form 4: Element I Expanded

Parameter of Study	Other Parameter (add description)	Statistical Descriptor	Release Parameter Value	Unit	Add'l parameter info.
*					

Form 4: Detailed Release Information - Elements

- E. Describes the type of release information that is reported, such as daily release, total releases, and migration rates; the scale of the study for determining releases, and how the results were determined (e.g., estimated or measured).
- F. Identifies the release results, the appropriate statistical descriptor associated with the result (e.g. average, median, minimum), and an open text field to describe the source of the release. Where appropriate, either select an appropriate statistical descriptor and unit from the dropdown or enter user-defined values.
- G. Collects information on the data collection method used (e.g., system flow meter, outfall monitoring) and the number of data points collected for the determination of your release results.
- H. Notes the medium of release and the number of sites the release results correspond to for releases. If results are a multi-media release, Go Back to Release Summary and add a separate release scenario for each medium of release.
- I. Provides drop-down list in Parameter of Study to select conditions or assumptions under which the release results in your study were developed. Add a separate record for each parameter. Where a parameter is not listed, select Not Listed (Add Description) in the drop-down list and provide a description in the Other Parameter (Add Description) field. Figure 11 shows the Additional Parameter Information field, which is an open text field to further describe each parameter of the study, as needed. Where appropriate, either select an appropriate statistical descriptor and unit from the dropdown or enter user-defined values associated with the parameter.
- J. Lists the release models that were used to develop the results in the study.
- K. Navigation buttons to Add More Release Information for this Study (Summary of Release Information window) or to Go Back to Menu (Main Menu). You must return to the Summary of Release Information window before you can navigate to the next form (Form 5).

8. Summary of Exposure Information and Form 5: Detailed Exposure Information

The Summary of Exposure Information window provides a summary of the existing exposure information for the specific study, end product, and chemical that was previously selected. It is structured similarly to the Summary of Release Information window and Form 4. Note that the title of the study from Form 1, the specified end product from Form 2, and the chemical from Form 3 are identified underneath the instructions for both forms. The Summary of Exposure Information window (Figure 12) summarizes exposure scenarios for the specific product and chemical you selected in this study. Form 5: Detailed Exposure Information (Figure 13-14) contains a detailed summary of the selected exposure scenario from the Summary of Exposure Information window.

Form 5 is also designed to allow you to add multiple scenarios for each combination of product and chemical for this study. To add release or exposure scenarios for a different chemical and/or product, you may Add Release and Exposure Data for Other Chemicals or End Products in this Study (Form 3), then Add Release Information for Other Chemicals or End Products in this Study (Form 2) to select a new combination.

Figure 12. Summary of Exposure Information Window

OECD Product Release and Exposure Data Warehouse

Summary of Exposure Information

Instructions: Add exposure information for your study. If your study does not have exposure data, select the check box to skip to the next step. Note: You may go back to the main menu at any time by clicking "Go Back to Menu."

Study: Test

Product: Agricultural products - Non-pesticidal

Chemical: Nitric acid ammonium salt (1:1)

This study does not identify exposure data. Go Back to Menu

This is the last form. Return to menu for other options.

EXPOSURE INFORMATION INCLUDED IN THE STUDY

Below is a summary of exposure information currently added for this study. Place the cursor next to the record you would like to update and select "Edit/Review Data" or add new exposure information for this study by selecting "Add Exposure Data."

Type exposure data	Exposed population	Exposure pathway	Results measured or estimated?

Add Exposure Data
Edit/Review Data

<<< Add Release and Exposure Data for Other Chemicals or End Products in this Study
Finish

A

B

C

D

Summary of Exposure Information - Elements

Note that this screen is just an informational window that summarizes the exposure information that currently exists for this study and scenario.

- A. If your study “does not identify exposure information,” check the box and return to the Main Menu. Your form is complete for the specific combination of product and chemical. This element is designed to be consistent with other skip patterns; however, there is no Skip to Next navigation button. Return to Main Menu to add information for a new study or to review the available information in your database. This will skip Form 5: Detailed Exposure Information.
- B. Lists a general summary of the exposure scenarios included for the specified product and chemical for this study.
- C. If adding a new exposure scenario, click on Add Exposure Data. If editing or reviewing an existing scenario, select the scenario and then click on Edit/Review Data. When you

click Add Exposure Data or Edit/Review Data, Form 5: Detailed Exposure Information will open. See Elements E through J for descriptions.

- D. Navigation buttons to Add Release and Exposure Data for Other Chemicals or End Products in this Study (Form 3). You can navigate to other forms to add more release and exposure scenarios for this study. If you are finished with entering information for this study, click on Finish to return to the Main Menu.

Figure 13. Form 5: Detailed Exposure Information

OECD Product Release and Exposure Data Warehouse

Form 5: Detailed Exposure Information

Instructions: Provide additional information on the releases presented in this study, including release parameters or models used in the development of the results.

Study: Test

Product: Agricultural products - Non-pesticidal

Chemical: Nitric acid ammonium salt (1:1)

What type of exposure data are you submitting?

Exposed population:

Exposure pathway:

What type of monitoring data is presented?

Results measured or estimated?

*	Statistical Descriptor: <input type="text"/>	Exposure Value: <input type="text"/>	Unit: <input type="text"/>

Select a statistical descriptor or unit value from the lists provided, or enter a user-defined value.

Number of data points (that makes up the value range presented for this factor):

Provide the sampling method used to obtain the results presented in this study.

For the above exposure data, provide a list of parameters or conditions under which the results were developed.

*	Parameter of Study: <input type="text"/>	Other Parameter (add description): <input type="text"/>	Statistical Descriptor: <input type="text"/>	Exposure Parameter Value: <input type="text"/>

For the above exposure data, provide a list relevant models used in the estimation of your parameters or results.

*	Provide the name of your exposure model. <input type="text"/>

Form 5 Elements

E

F

G

H
(Expanded below)

I

J

Figure 14. Form 5: Element H Expanded

Parameter of Study	Other Parameter (add description)	Statistical Descriptor	Exposure Parameter Value	Unit	Add'l parameter info
*					

Form 5: Detailed Exposure Information - Elements

- E. Describes the type of exposure information that is reported, such as exposure concentrations or daily dosage rates; the exposed population and exposure pathway; whether the results are based on biological, area, environmental, or personal breathing zone monitoring; and how the results were determined (e.g., estimated or measured).
- F. Identifies the exposure results and the appropriate statistical descriptor (e.g. average, median and minimum) associated with the results. Where appropriate, either select an appropriate statistical descriptor and unit from the dropdown or enter user-defined values.
- G. Collects information on the data collection method used (e.g., personal air-sampling pump, vapour monitor badges) and the number of data points collected for the determination of your exposure results.
- H. Provides drop-down list in Parameter of Study to select conditions or assumptions under which the exposure results in your study were developed. Add a separate record for each parameter. Where a parameter is not listed, select Not Listed (Add Description) in the drop-down list and provide a description in the Other Parameter (Add Description) field. Figure 14 shows the Additional Parameter Information field, which is an open text field to further describe each parameter of the study, as needed. Where appropriate, either select an appropriate statistical descriptor and unit from the dropdown or enter user-defined values when entering exposure parameters.
- I. Lists the exposure models that were used to develop the results in the study.
- J. Navigation buttons to Add More Exposure-Specific Information (Summary of Exposure Information window). From the Summary of Exposure Information window, you can navigate to other forms to add more release and exposure scenarios for this study. If you are finished with entering information for this study, you may Go Back to Menu (Main Menu).

9. Data Dictionary for Form Elements

A data dictionary was prepared to inform users of the type of information intended for each data field, along with instructions for required for data entry.

Form Number	Form Title	Form Field Description	Field Type	Field Description
	Main Menu	Study Title	Text	Title of study/report
1	Enter Study Information	Submitting Country	Text	Submitting country
1	Enter Study Information	Company or Agency Affiliation	Text	Name of company or affiliation that is sponsoring the study/report
1	Enter Study Information	Author(s)	Text	Name of authors of the study/report
1	Enter Study Information	Title of Study or Report	Text	Title of study/report
1	Enter Study Information	Publication Date or Anticipated Publication Date	Date/Time	Publication date of study/report (or pending publication date)
1	Enter Study Information	What is the status of the study?	Text	Status of study (completed or pending)
1	Enter Study Information	Indicate all countries covered in the study.	Yes/No Text	Country that is representative of the results of study/report. Provides checkboxes for pre-determined countries and a free-text for additional countries.
1	Enter Study Information	Provide the abstract below	Memo	Study or report abstract
1	Enter Study Information	What were the key findings of the study?	Memo	Key findings of the report
1	Enter Study Information	Provide the primary contact for this study	Text	Name of contact regarding this study/report
1	Enter Study Information	Primary contact email	Text	Contact email
1	Enter Study Information	Website location	Text	Internet address of the study (if available online)
2	Identify End Products Studied	This study does not identify product-specific release and exposure data.	Yes/No	Flag set if there are no end products
2	Identify End Products Studied	Product Description	Text	Category of end products/articles evaluated in the study/report (dropdown list)
2	Identify End Products Studied	Other Description	Text	Additional description of the end products/articles
3	Identify Chemicals Studied	Lookup Chemical (Action Button)	Memo	Chemical name
3	Identify Chemicals Studied	Lookup Chemical (Action Button)	Text	Chemical Abstract Services (CAS) number
3	Identify Chemicals Studied	Lookup Chemical (Action Button)	Long Integer	A unique ID assigned to each chemical in the lookup list
3	Identify Chemicals Studied	This study does not identify chemical-specific release and exposure data.	Yes/No	Flag set if there is no chemical information
3	Identify Chemicals Studied	Chemical Name	Text	Name of chemical evaluated in the study/report
3	Identify Chemicals Studied	Chemical Category	Text	Chemical category
3	Identify Chemicals Studied	Other Description	Text	If the chemical category is not included in the dropdown list, a written description of chemical category or identifying information
3	Identify Chemicals Studied	Statistical Descriptor	Text	Statistical descriptor for the chemical concentration value (dropdown list or enter user-defined value)
3	Identify Chemicals Studied	Chemical Concentration Value	Double	Chemical concentration value

Form Number	Form Title	Form Field Description	Field Type	Field Description
3	Identify Chemicals Studied	Unit	Text	Chemical concentration unit (dropdown list or enter user-defined value)
3	Identify Chemicals Studied	CAS Number	Text	Chemical Abstract Services (CAS) number for the chemical evaluated in study/report
4	Identify Release Information	This study does not identify release information	Yes/No	Flag set if there is no release information
4	Identify Release Information	Media of Release	Text	Environmental release media
4	Identify Release Information	Type of Release Information	Text	Type of release data being reported (dropdown list)
4	Identify Release Information	Results measured or estimated?	Text	Type of data (estimated, measured) (dropdown list)
4	Identify Release Information	Scale of testing	Text	Characterization of data (e.g., results are either bench scale, pilot scale, or full scale) (dropdown list)
4	Detailed Release Information	Statistical Descriptor	Text	Statistical descriptor for the release value (dropdown list or enter user-defined value)
4	Detailed Release Information	Release value	Double	Release value
4	Detailed Release Information	Unit	Text	Release value unit (dropdown list or enter user-defined value)
4	Detailed Release Information	Provide a description of the source of release or migration...	Text	Information on source of release (for example, equipment washes, normal operations, unloading/loading)
4	Detailed Release Information	Number of data points (that makes up the value range presented for this factor)	Long Integer	Number of data points (that makes up the value range presented for this factor)
4	Detailed Release Information	Provide the sampling method used to obtain the results presented in this study	Text	Sampling method (if measured) used to obtain the release data
4	Detailed Release Information	Number of sites	Double	Number of sites associated with the release
4	Detailed Release Information	Parameter of Study	Text	The conditions in which the release study were conducted (dropdown list)
4	Detailed Release Information	Other Parameter (add description)	Text	Description of release condition (if Not Listed (Describe) is selected from dropdown list)
4	Detailed Release Information	Statistical Descriptor	Double	Statistical descriptor for the release parameter value (dropdown list or enter user-defined value)
4	Detailed Release Information	Release Parameter Value	Double	Release parameter value
4	Detailed Release Information	Unit	Text	Release condition value unit (dropdown list or enter user-defined value)
4	Detailed Release Information	Additional parameter info.	Memo	Other pertinent information related to release data presented
4	Detailed Release Information	Provide the name of your release model.	Text	Release model used to estimate the release (if estimated).
5	Identify Exposure Information	This study does not identify exposure information	Yes/No	Flag set if there is no exposure information
5	Identify Exposure Information	Exposed population	Text	Exposed population (dropdown list)

Form Number	Form Title	Form Field Description	Field Type	Field Description
5	Identify Exposure Information	Exposure pathway	Text	Exposure pathways (dropdown list)
5	Identify Exposure Information	Type of exposure data	Text	Type of exposure data (dropdown list)
5	Identify Exposure Information	Results measured or estimated?	Text	Type of value (measured or estimated)
5	Detailed Exposure Information	What type of monitoring data is presented?	Text	Type of exposure monitoring data (for reported exposure concentration data) (dropdown list)
5	Detailed Exposure Information	Statistical Descriptor	Text	Statistical descriptor for the exposure data (dropdown list or enter user-defined value)
5	Detailed Exposure Information	Exposure Value	Double	Exposure value
5	Detailed Exposure Information	Unit	Text	Exposure value unit (dropdown list or enter user-defined value)
5	Detailed Exposure Information	Number of data points (that makes up the value range presented for this factor)	Long Integer	The size of the sample that the range of values represents (number of measurements)
5	Detailed Exposure Information	Provide the sampling method used to obtain the results presented in this study	Text	Exposure sampling method used (if measured)
5	Detailed Exposure Information	Parameter of Study	Text	The conditions in which the exposure study were conducted
5	Detailed Exposure Information	Other Parameter (add description)	Text	Description of exposure condition (if Not Listed (Describe) is selected)
5	Detailed Exposure Information	Statistical Descriptor	Text	Statistical descriptor for the exposure parameter value (dropdown list or enter user-defined value)
5	Detailed Exposure Information	Exposure Parameter Value	Double	Exposure parameter value
5	Detailed Exposure Information	Unit	Text	Exposure parameter value unit (dropdown list or enter user-defined value)
5	Detailed Exposure Information	Additional parameter info.	Memo	Other pertinent information related to exposure data presented.
5	Detailed Exposure Information	Provide the name of your exposure model	Text	Exposure model used to calculate results