

For Official Use

ENV/JM/BIO(2004)13/REV4



Organisation de Coopération et de Développement Economiques
Organisation for Economic Co-operation and Development

03-Feb-2009

English - Or. English

**ENVIRONMENT DIRECTORATE
JOINT MEETING OF THE CHEMICALS COMMITTEE AND
THE WORKING PARTY ON CHEMICALS, PESTICIDES AND BIOTECHNOLOGY**

Working Group on the Harmonisation of Regulatory Oversight in Biotechnology

DRAFT CONSENSUS DOCUMENT ON THE BIOLOGY OF BANANA AND PLANTAIN (Musa spp.)

JT03259118

Document complet disponible sur OLIS dans son format d'origine
Complete document available on OLIS in its original format

**ENV/JM/BIO(2004)13/REV4
For Official Use**

English - Or. English

The initial draft of this biology consensus document was prepared by Spain as the lead country, for presentation at the 15th meeting of the Working Group in June 2004. Since then, the document has been revised on several occasions, taking into account comments from the Working Group and new information.

After the presentation of a revised draft at the 18th meeting held in June 2006, a collaboration between Spain and the United States was developed and this revised draft was completed.

At the 21st meeting, it was agreed that a draft revised version could be distributed to the Working Group for review with a consideration for declassification.

ACTION REQUIRED: The Working Group is invited to review this document and agree that it be forwarded to the Joint Meeting for declassification.

TABLE OF CONTENTS

SECTION I. TAXONOMY AND GENOMIC GROUPS	5
1.1. Background	5
1.2. Taxonomic and genomic classifications.....	6
1.3. Centres of origin of wild <i>Musa</i> species	7
SECTION II. DOMESTICATIONS, CROP DIFFUSION, CULTIGEN CLASSIFICATION	9
2.1. Domestications and diversification	9
2.2. Diffusion and migration of crops	10
2.3. Classification of cultivated <i>Musa</i>	10
SECTION III. PLANT CYCLE AND AGRONOMIC SYSTEMS	14
3.1. Description	14
3.2. Abiotic environment.....	16
3.3. Cultivation practices.....	17
3.4. Harvest and storage	19
SECTION IV. DISEASES AND PESTS.....	20
4.1. Fungi	20
4.2. Unknown agents.....	21
4.3. Bacteria	22
4.4. Viruses.....	22
4.5. Insects.....	24
4.6. Nematodes.....	25
SECTION V. REPRODUCTIVE BIOLOGY AND ECOLOGY.....	27
5.1. Pollination	27
5.2. Seeds	28
SECTION VI. GENETICS AND HYBRIDISATION	29
6.1. Genetic diversity and genomic architecture	29
6.2. Natural or spontaneous hybridisation, genetic behaviour and genetic mapping	29
6.3. Experimental breeding	31
6.4. Breeding schemes.....	31
6.5. Targets and results.....	32
SECTION VII. GENETIC IMPROVEMENT AND BIOTECHNOLOGY	34
7.1. Mutagenesis.....	34
7.2. <i>In vitro</i> culture, somatic embryogenesis and somaclonal variation	34
7.3. Genetic engineering.....	35

SECTION VIII. HUMAN HEALTH AND BIOSAFETY 37

 8.1. Medicinal and therapeutic value..... 37

 8.2. Allergenicity..... 38

APPENDIX 1. PROVISIONAL CLASSIFICATION OF THE WILD SPECIES OF *MUSA* L. SECTION *MUSA*..... 39

APPENDIX 2. PROVISIONAL CLASSIFICATION OF THE WILD SPECIES OF *MUSA* L. SECTIONS INGENTIMUSA, RHODOCHLAMYS, CALLIMUSA AND AUSTRALIMUSA, AS WELL AS INCERTAE SEDIS (SECTION UNKNOWN)..... 42

REFERENCES 45

SECTION I. TAXONOMY AND GENOMIC GROUPS

1.1. Background

1. The Asian species *Musa acuminata* and *Musa balbisiana* have provided the sources for domestication and development of the great majority of edible bananas and plantains. Dessert and cooking bananas and plantains are major foods worldwide, cultivated in over 130 countries throughout tropical regions and in some subtropical regions, in Asia, Africa, Latin America and the Caribbean, and the Pacific. Global production is difficult to determine because the plants are so often grown locally in small plots (*e.g.* household gardens) and consumed locally. The reported area cultivated worldwide in 2006 was 4.2 million hectares of bananas and 5.4 Mha of plantains, with a world production of 70.8 million metric tonnes of bananas and 34.0 Mmt of plantains (FAO, 2008). The international trade, which involves just a few varieties of fruit, accounts for 15% of production. In addition to the edible species, *Musa textilis* (abacá, Manila hemp) is important for fibre production, and there are several ornamental species (Häkkinen, 2007).

2. The English word plantain apparently was derived from the Spanish plátano (Simmonds, 1966/1973; Smole, 2002), a name that is used throughout the Spanish-speaking world although its scope changes regionally (and the word's origin is unknown). (Plantain is also employed for the genus *Plantago*, unrelated plants in the Plantaginaceae.) In much of Central America and South America the word plátano is reserved for the starchy fruit and banana is used as in English for the sweet fruit, whereas plátano is used for both fruit types in Mexico and Spain — including the Canary Islands, to which the plants were brought by early Portuguese explorers and from which they were carried to the New World (Ferrão, 1992; Galán Saúco, 1992). The word banana, which probably originated in West Africa and was put into wider use by the Portuguese, also has narrow to broad usages, which frequently can include all the edible *Musa*, or all species of the genus *Musa*. Thus one can speak of a plantain banana and a dessert banana (*e.g.* Tezenas du Montcel, 1985/1987) to maintain the typical distinction between a starchy fruit and a sweet fruit.

3. In their centres of domestication in Southeast Asia and South Asia there is as well a broad crop concept, with single vernacular names that do not differentiate between dessert and cooking bananas (including plantains): kalpatharu in India, kera in Nepal, chiao in China, chuôi in Vietnam, kluai in Thailand, pisang in Malaysia and Indonesia and saging in the Philippines. The numerous cultivated varieties in these regions are typically distinguished by adjectives (*cf.* Table 1) (*e.g.* Valmayor *et al.*, 2000a, 2000b; Uma and Sathiamoorthy, 2002). In Africa, where *Musa* was introduced several thousand years ago, the vernacular names also reflect the considerable diversity of cultivated varieties and their uses, and plantain has varied meanings (Swennen, 1990).

4. Plantains and bananas when distinguished for the respectively starchy and sweet fruits, correspond roughly to two supposed species (but actually hybrids) described by Linnaeus in 1753 and 1759, to which he gave the respective names *Musa paradisiaca* and *Musa sapientum*. *Musa paradisiaca* referred to cultivated plants (similar to the modern 'French Plantain') with bracts and male flowers usually persistent, and horn-shaped fruits that are rather starchy and cooked to become palatable (*cf.* Linnaeus, 1736/1967, 2007). *Musa sapientum* referred to plants (similar to one of the popular dessert bananas of the tropics — 'Silk') with dehiscent bracts and male flowers, and slightly acidic sweet fruits eaten fresh. The distinction was adopted widely, referring to plantain types as *M. paradisiaca* and dessert types as *M. sapientum*; this "species" nomenclature is now outdated, but is still found in use occasionally. Although recognition of the

two main types worked fairly well with the commonly cultivated plants from tropical America and West Africa that were becoming familiar to Europeans, the plants being grown in Southeast Asia (as well as eastern Africa) were much more diverse — for example with dual-purpose plants having fruits consumed either fresh or cooked, and plants with dehiscent bracts and male flowers but starchy fruits used for cooking (Karamura, 1999; Valmayor *et al.*, 2000a, 2000b).

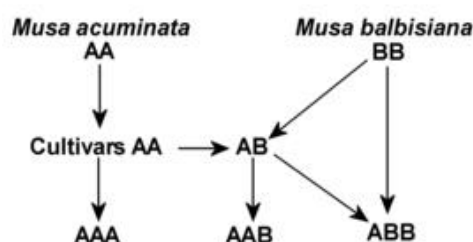
5. Nomenclaturally, as a generality for a limited purpose, the name *Musa* ×*paradisiaca* L. can be correctly used just to indicate any bispecific hybrid of *M. acuminata* and *M. balbisiana* (*M. ×sapiantum* L. is simply a synonym) — as both of the plants Linnaeus described are now considered to be AAB triploids (Figure 1) (Argent, 1984; Karamura, 1999). However, for exact work, a more discriminative advanced classificatory system is required, and the genomic groups of the hybrids and species need to be given (*e.g.* Table 1) (Stover and Simmonds, 1987; Valmayor *et al.*, 2000b; Pillay *et al.*, 2004).

1.2. Taxonomic and genomic classifications

6. Bananas and plantains are in the genus *Musa* L. of the small family Musaceae (which also includes the genera *Ensete* and *Musella*), in the monocot order Zingiberales (formerly Scitamineae) (Kress *et al.*, 2001; Kress and Specht, 2005, 2006). *Musa* has over 60 known wild species (see Appendices 1 & 2), with known diploid ($2n$) chromosome numbers of 22, 20, or rarely 18 or 14 (Simmonds, 1962; Shepherd, 1999). The diploid chromosome number together with phenotypic characteristics of the inflorescence and seeds have been the basis for conventional division of the genus into four, or sometimes five, sections (Appendices 1 & 2): *Musa* (called *Eumusa* traditionally), *Rhodochlamys*, *Callimusa* and *Australimusa*, and sometimes also *Ingentimusa* (Simmonds, 1962; Stover and Simmonds, 1987; Simmonds and Weatherup, 1990b; Häkkinen, 2004b). However, researchers are finding some sections ill-defined, and that fewer sections may be more accurate (Jarret and Gawel, 1995; Shepherd, 1999; De Langhe, 2000b; Nwakanma *et al.*, 2003; Wong *et al.*, 2002, 2003; Bartoš *et al.*, 2005; *cf.* Häkkinen *et al.*, 2007c).

7. *Musa* section *Musa* as commonly circumscribed includes more than a dozen wild species. Among these are *Musa acuminata* Colla and *Musa balbisiana* Colla, which have provided the great majority of edible bananas and plantains through selection and crossing both intraspecifically (within and between *M. acuminata* subspecies and cultigens), and interspecifically (between these two species) (Figure 1).

8. Cheesman (1947, 1948a, 1948b) pioneered the modern scientific classification of *Musa* (Simmonds, 1966/1973). Most edible bananas (in the broad sense) derive either from one diploid species, or from its diploid or triploid (or rarely tetraploid) hybrids with one other diploid species. The *Musa acuminata* haploid genome is designated with the letter A, the *M. balbisiana* genome with B. The dessert or sweet bananas often (but not always) are triploids and diploids of *M. acuminata*, and the plantains and other starchy cooking bananas generally (but not always) are triploids derived from hybridisations between *M. acuminata* and *M. balbisiana* (see Figure 1).

Figure 1. Crossing relationships of most cultivated edible *Musa*

9. A few edible cultigens of interest locally are derived from section *Australimusa* (TT) plants crossed with *Musa acuminata* (resulting in AT or AAT genomes) or also with *M. balbisiana* (resulting in ABBT), and in addition there are a few diploids (AS) from crosses of *M. acuminata* with the section *Musa* species *M. schizocarpa* (SS) (Table 1). Furthermore, the Fe'i bananas, a completely different edible group of cultigens, were domesticated separately from within *Australimusa*; they have not been characterised further genomically (Table 1). *Musa lolodensis* and perhaps *M. maclayi* may have provided the wild source species for this domestication (Sharrock, 2001).

1.3. Centres of origin of wild *Musa* species

10. The genus *Musa*, which is over 50 million years old (Kress and Specht, 2006), has diversified throughout much of the greater Southeast Asian region (*cf.* WWF and IUCN, 1995). *Musa acuminata* and *Musa balbisiana* diverged about 4.6 million years ago (Lescot *et al.*, 2008). Appendices 1 & 2 provide a provisional classification of the wild species of the genus placed in the sections as conventionally used (*cf.* Daniells *et al.*, 2001; Pollefeys *et al.*, 2004; Häkkinen and Väre, 2008c), and as well their known natural wild distributions. However, the taxonomy of *Musa* is far from settled at the sectional, species, and infraspecific levels, although it has been receiving considerable attention in recent years. The research and explorations are resulting in discovery and description of many distinctive new species as well as many botanical varieties, and in reclassifications of taxa. Some taxa remain little known. The natural geographical range of some taxa is obscure because of limited exploration, and in some cases the difficulty in distinguishing between natural populations and naturalised or adventive (*i.e.* free-living but non-native) plants. The nomenclature of some taxa is also unsettled (*cf.* Häkkinen and Väre, 2008c). Therefore, Appendices 1 & 2 are a sketch of the work in active progress, consequently incomplete and not definitive.

11. The apparently natural range of genuinely wild *Musa acuminata* is the most extensive in the genus, from northeastern India across continental Southeast Asia (including southern China) and the Philippines, and through the Malay Peninsula and Malay Archipelago to northeastern Australia. This species also has the greatest taxonomic diversity. Rigorous taxonomic study of this polymorphic species throughout its range in the wild is needed to evaluate the evolutionary significance of the many named wild subspecies and botanical varieties, some of which are little known. Most of its many subspecies and/or botanical varieties (Appendix 1) are native only west of Wallace's line (between Borneo and Sulawesi), which demarcates the biogeographic discontinuity between Asia and Australasia (Ploetz and Pegg, 1997). In the past 2 million years the region's climate and sea level have undergone considerable fluctuation (Woodruff, 2003; Bird *et al.*, 2005). The climate was drier and more seasonal and the sea 100-120 m lower during glacial maxima 250,000 years ago and again roughly 20,000 years ago (Voris, 2000; Woodruff, 2003). Consequently, a single continental landmass (called Sundaland) then included Indochina, Thailand and the Malay Peninsula integrally with Sumatra, Java and Borneo (and associated smaller islands of the Sunda shelf). The Philippines Archipelago was then largely consolidated. New Guinea and Australia were then part of a separate single landmass, Sahul (which included the now-submerged Sahul shelf). The many

subspecies and/or botanical varieties of *M. acuminata* occurring in various areas within this large and diverse region are presented geographically in Appendix 1 to clarify their natural patterns of distribution.

12. The natural range of *Musa balbisiana* extends from India including the Andaman Archipelago (Sarma *et al.*, 1995; Uma and Sathiamoorthy, 2002; Uma *et al.*, 2005; Uma and Buddenhagen, 2006) across northern Myanmar (Burma), Thailand (Swangpol *et al.*, 2007; *cf.* De Langhe *et al.*, 2000) and Indochina to southern China (Ge *et al.*, 2005; Wang *et al.*, 2007) and the Philippines (Sotto and Rabara, 2000; Valmayor *et al.*, 2002). Farther southward, it may be naturally rare or only introduced and naturalised on the southern Malay Peninsula and in the Malay Archipelago, as well as New Guinea and New Britain (*cf.* Simmonds, 1962; Argent, 1976; Sharrock, 1990; De Langhe and de Maret, 1999; Häkkinen and Väre, 2008c). Essentially, *M. balbisiana* may be among the species that originated in the Indochina biogeographic province, which transitions in the mid-portion of the Malay Peninsula to the Sundaland biogeographic province. These two regions are biogeographically distinct (both in floras and faunas) possibly because seaways separated the northern and southern portions of the present-day peninsula (in the Isthmus of Kra area) with the fluctuations in oceanic height at various times in the past (Woodruff, 2003).

SECTION II. DOMESTICATIONS, CROP DIFFUSION, CULTIGEN CLASSIFICATION

2.1. Domestications and diversification

13. There is evidence of utilisation of bananas in the highlands of New Guinea 10,000 years ago and cultivation by 7,000 years ago (Denham *et al.*, 2003, 2004; Denham, 2005). Some wild bananas in Southeast Asia were no doubt used for non-food purposes such as shelter, fibre and dyes, and their starchy corms may initially have been the main focus for food as the wild seedy fruits are not very palatable (De Langhe, 1996; Sharrock, 1997). Edibility of the fruits of diploid *Musa acuminata* likely developed through selection. The increasing interest in them was probably linked to the occurrence of parthenocarpy (asexual fruit development) and seed decline in the primitive types of *M. acuminata* consequent to their vegetative propagation. Crossing of the seeded edible diploids (AA) — over time involving several of the many subspecies of *M. acuminata* in diverse regions (Appendix 1) — resulted in the formation of generally sterile hybrid progeny with the genome AAA, also propagated vegetatively. Diverse hybridisations with *M. balbisiana* resulted in mostly sterile hybrid progeny mainly with the genomes AB (dessert bananas), AAB (plantains) and ABB (cooking bananas) (Figure 1) (De Langhe and de Maret, 1999; Kagy and Carreel, 2004). Rarely other combinations arose such as bispecific tetraploid AABB cultigens, and quite infrequently a few additional species were involved (subsection 1.2, and Table 1).

14. The spectrum of starchy and/or sweet fruits found within some of these main genomic groups shows that the A genome is itself quite diverse — several subspecies of *M. acuminata* (Appendix 1) were involved in varied ways (inter-subspecific hybridisations) in the emergence of varying crop lineages (Horry and Jay, 1990; Lebot, 1999; Carreel *et al.*, 2002; Kagy and Carreel, 2004; Swangpol *et al.*, 2007). The Australasian (Sahul) *Musa acuminata* ssp. *banksii* appears to be the primary source of the domesticated plants, which may have arisen first in New Guinea (Lebot, 1999; Denham *et al.*, 2003, 2004). Some bananas and plantains apparently also variously involve the more western (Sundaland) *M. acuminata* ssp. *errans* (a Philippines endemic), *M. acuminata* ssp. *malaccensis* (ranging from Java to Thailand) or *M. acuminata* ssp. *zebrina* (a Java endemic) (Appendix 1).

15. Traditional domesticated varieties of diploid and triploid dessert and cooking bananas are still abundant throughout Southeast Asia (Valmayor *et al.*, 2000a, 2000b), with their primary areas of diversity in Malaysia and New Guinea. Somaclonal variation, possible because of their vegetative propagation, has surely increased the genetic diversity (Section VII). Most of the plantain (AAB) types apparently originated in India and the Philippines, the only regions where there is still a great diversity of plantain cultigens (De Langhe, 1996; De Langhe and de Maret, 1999; *cf.* Ball *et al.*, 2006) — the wealth of plantain varieties is found in some parts of South India, and in remote areas of Luzon in the Philippines (Valmayor *et al.*, 2002).

16. A completely separate edible group, the Fe'i bananas, was domesticated and developed from within the *Australimusa* section of the genus. *Musa lolodensis* and perhaps *M. maclayi* (Appendix 2) may have provided the source(s) for domestication in New Guinea (Jarret *et al.*, 1992; De Langhe and de Maret, 1999; Sharrock, 2001). These crop plants were grown throughout the Pacific region, and dominated on Tahiti (Sharrock, 2001; Kennedy, 2008; *e.g.* Englberger and Lorens, 2004). The Fe'i group is composed of cultigens characterised by the reddish sap of the plant, shiny bright green bracts, and carotenoid-rich

orange-fleshed fruit (Englberger *et al.*, 2003) produced in erect bunches rather than the hanging bunches typical of *eumusa* types.

2.2. Diffusion and migration of crops

17. Austronesian-speaking people (perhaps from Borneo) may have been the first humans to colonise Madagascar, between 200-500 AD. However much earlier Melanesians apparently reached the East African coast, and brought along several kinds of edible *Musa* for planting (Shigeta, 2002). There is suggestive evidence of contact between India and East Africa 4000 years ago, although the earliest definite historical traces of cultural contact date from 2000 years ago (Lejju *et al.*, 2006). *Musa* leaf phytoliths have recently been found in Uganda dating to 4100-4500 years ago (Lejju *et al.*, 2006). Based on botanical and ethnographic evidence, De Langhe *et al.* (1996) considered that plantains (AAB) probably reached Africa over 3000 years ago. *Musa* phytoliths found in Cameroon date to approximately 2500 years ago (Mbida *et al.*, 2001, 2004, 2005, 2006; Vansina, 2003; Vrydaghs *et al.*, 2003). After plantains spread to humid forest climates in lowland western Africa, the crop underwent intensive diversification (De Langhe and de Maret, 1999; Karamura, 1999; De Langhe *et al.*, 2005).

18. Edible *Musa* seem to have been distributed throughout Polynesia (remote Oceania) by approximately 200 AD (Kagy and Carreel, 2004; Kennedy, 2008). Between 1000 BC and 500 AD (during Sabeen civilisation) possibly some edible *Musa* (ABB cooking bananas, non-plantain AABs) from India reached southwestern Arabia and nearby northeastern Africa through Arab and/or Persian traders, but there is no certain evidence (De Langhe, 2000a). There is inconclusive linguistic speculation on the Arabic words *mauz* and *banana* and their association with these plants (De Langhe, 2000a).

19. Edible *Musa* probably arrived to the Canary Islands from West Africa during the 15th century (Ferrão, 1992; Galán Saúco, 1992). They were introduced from these islands to the Americas by at least 1516 but likely earlier (the first recorded introduction was to “La Española” island in the Caribbean). *Musa* spread rapidly throughout the tropical regions of the New World (*cf.* Johannessen, 1970). Their considerable distribution soon after Columbus’ first voyage is well documented, leading to speculation on a presence even prior to 1492 (Moreira, 1999; Smole, 2002). However the usual explanation is that the rapid foothold and spread ran parallel to the slave trade, for which banana and plantain were considered a staple food (Simmonds, 1966/1973). The relative durability of propagation material and the speed with which the plant produces fruit favour this hypothesis (Stover and Simmonds, 1987). By the early 1800s the cultivars ‘Dwarf Cavendish’ and ‘Gros Michel’ had been introduced to the New World from Southeast Asia.

20. The modern international trade began in the late 19th century, and with improving transportation and storage, banana increasingly became a major food item in temperate-zone markets of the Western World as well as the Far East. Select cultivars were introduced into the Canary Islands by the end of that century and increasingly exported to other European countries (mainly England and France), and are now grown commercially in Portugal as well as Spain.

2.3. Classification of cultivated *Musa*

21. The vast majority of plantains, cooking bananas and dessert bananas cultivated are sterile seedless triploids (Figure 1) (INIBAP, 1995; Zeller, 2005), but some diploid or rarely tetraploid cultigens are grown, nearly all derived either from *Musa acuminata* or hybridisation between this diverse species and *M. balbisiana*. Plantains and cooking bananas usually are bispecific triploid hybrids, AAB or ABB respectively, with the exception of the East African Highland bananas, which are starchy AAA triploids used in that region either for beer production or as a cooked vegetable (Karamura, 1999; Karamura and Pickersgill, 1999; Carreel *et al.*, 2002).

22. The dessert bananas are more diverse genomically. The most important to commerce are those of the Cavendish subgroup, which supply 95% of the world export trade. They are AAA triploids, the best known being the cultivars 'Grande Naine' and 'Dwarf Cavendish'; among the other dessert AAA triploids is 'Gros Michel', at one time the world's leading commercial cultivar but now nearly absent due to its high susceptibility to *Fusarium* wilt disease. Other dessert bananas of smaller economic importance include AA diploids, such as 'Pisang Mas' in Southeast Asia and 'Bocadillo' in Latin America (both are well known due to their excellent taste, and prized by European gourmet fruit retailers); some AB diploids; AAB triploids like 'Silk', 'Pome' and 'Manzano'; and the modern AAAB tetraploid 'Goldfinger'.

23. There have been many efforts to inventory and classify the wealth of cultigens and cultivars of bananas and plantains in different *Musa* germplasm collections. Evaluation based on morphology had been the standard (Simmonds and Shepherd, 1955; Simmonds and Weatherup, 1990a; IPGRI-INIBAP and CIRAD, 1996; Ortiz, 1997a). Modern techniques to detect differences have employed isozyme polymorphism (Bhat *et al.*, 1992a, 1992b); and various DNA molecular markers, such as RAPD (Howell *et al.*, 1994; Bhat and Jarret, 1995; Bhat *et al.*, 1995; Damasco *et al.*, 1996); RFLP (Gawel *et al.*, 1992; Jarret *et al.*, 1992; Carreel *et al.*, 1993; Fauré *et al.*, 1993; Bhat *et al.*, 1994); AFLP (Ude *et al.*, 2002a, 2002b; Noyer *et al.*, 2005); and microsatellites (SSRs) (Lagoda *et al.*, 1996; Dussart, 2001; Creste *et al.*, 2004; Buhariwalla *et al.*, 2005). Chloroplast DNAs of A and B cytoplasms have been differentiated (Umali and Nakamura, 2003), and the genomic distribution of ribosomal DNA in various species (Bartoš *et al.*, 2005).

24. Table 1 provides a summary of some familiar or otherwise notable cultivated varieties (cultigens, landraces, cultivars) of edible *Musa* species and hybrids classified by cross and the level of ploidy (*cf.* Stover and Simmonds, 1987; Daniells *et al.*, 2001; Carreel *et al.*, 2002; Zeller, 2005). Molecular methods have provided a breakthrough, which is confirming the ploidy and genomic group of most accessions, but also resulting in reclassification of several varieties (*e.g.* Pillay *et al.*, 2006).

Table 1. Some cultivated varieties of edible *Musa*

CROSSED SPECIES	GENOME	VARIETY/CULTIVAR
Section <i>Musa</i> (<i>Eumusa</i>) <i>M. acuminata</i> (AA) × <i>M. acuminata</i> (AA)	AA	Sucrier, Pisang Mas Pisang Jari Buaya Pisang Lilin Inarnibal
	AAA	Bocadillo Gros Michel Cavendish Red Ambon Putih Ibota Lakatan Orotava Rio Robusta, Valery Mutika/Lujugira (Highland bananas)
	AAAA	Pisang Ustrali Golden Beauty
<i>M. acuminata</i> (AA) × <i>M. balbisiana</i> (BB)	AB	Ney Poovan, Kisubi Kamaramasenge Kunnan
	AAB (ABA, BAA)	Iholena Laknau Mysore, Poovan Silk, Silk Fig, Rasthali Maçã Pome, Prata Pacovan Pisang Nangka Raja Nendra Padaththi Pisang Kelat Nadan Mai'a Maoli Pōpō'ulu French Plantain Nendran False Horn Plantain Agbagba Horn Plantain Three Hand Planty
	ABB (BAB)	Bluggoe, Monthan Kalapua Klue Teparod (Kluai Tiparot) ¹ Saba Cardaba Ney Mannan Peyan Pelipita ²
	AAAB	Goldfinger
	AABB	Laknau Der Pisang Awak/Pisang Klutuk
<i>M. acuminata</i> (AA) × <i>M. schizocarpa</i> (SS)	AS, SA	Ato Ungota Vunamami Kokor

CROSSED SPECIES	GENOME	VARIETY/CULTIVAR
		Wompa
Section <i>Australimusa</i> (TT) <i>M. lolodensis</i> , <i>M. maclayi</i>	Fe'i group ³	Karat Kole Karat Pako Karat Pwehu Menei Rimina Utafan Utimwas Utin lap Wain
Section <i>Musa</i> (<i>Eumusa</i>) (AA & BB) × Section <i>Australimusa</i> (TT)	AT (TA) AAT (TAA)	Umbubu Karoina Mayalopa Sar
	ABBT	Yawa 2 Giant Kalapua

¹ Earlier considered to be ABBB (Horry *et al.*, 1998)

² 8 A chromosomes, 25 B chromosomes (D'Hont *et al.*, 2000; Heslop-Harrison and Schwarzacher, 2007)

³ Genome not characterised further

SECTION III. PLANT CYCLE AND AGRONOMIC SYSTEMS

25. Bananas and plantains are cultivated in tropical and subtropical regions worldwide within latitudes 30° North and 30° South of the equator and in some additional subtropical regions. In suitable climates, fruits are harvested year-round (Tixier *et al.*, 2004; Zeller, 2005).

3.1. Description

26. Bananas and plantains are large herbaceous plants which can confer the aspect of a tree (Figure 2). One wild species (*Musa ingens*) can reach 16 m tall, although most commercial types grow to between 2 m and 5 m. The main trunk is a pseudostem formed by the concentric assembly of the leaf sheaths (modified petioles), which is crowned by a rosette of very large oblong to elliptic leaves. The leaf blade (up to 2 m²) normally is transversely split (by wind) between parallel veins, which assists cooling and photosynthesis (Karamura and Karamura, 1995). Leaves are produced successively until the single inflorescence is cast (Allen *et al.*, 1988), and are present in variable number (10 to 20 under healthy conditions) depending on the variety, the climate and cultivation practices. Each leaf takes 7-14 days to emerge (Turner *et al.*, 2007).

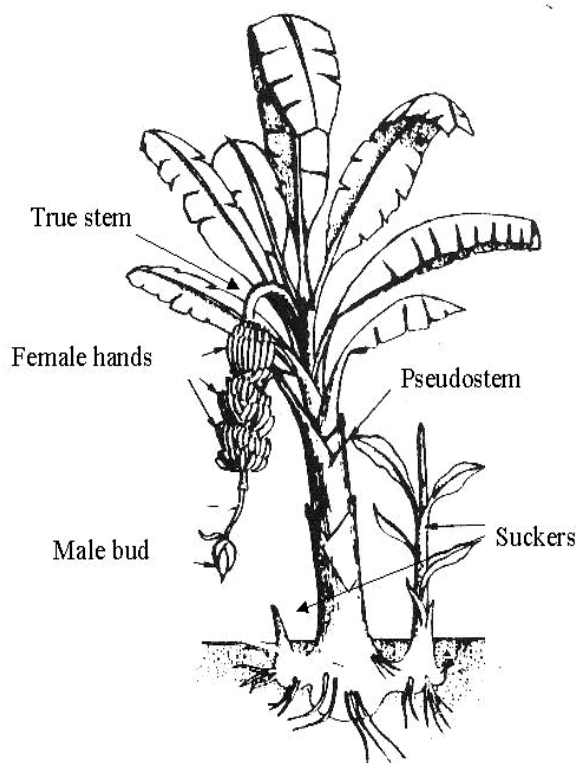


Figure 2. Schematic representation of a cultivated banana plant

27. The true stem is a subterranean organ (corm) which extends upwards at the core of the pseudostem until culminating in the inflorescence which emerges from the top. The meristem of the true stem produces all other parts of the plant. The many main roots emerging from the rootstock are rather straight, adventitious cords (2-10 mm in diameter) that extend up to 2-3 (-5) m outwards, from which (with a density of 8 to 10 per cm of cord root) branch lateral roots (0.3-4 mm in diam) that extend up to 1 m, and from which tertiary rootlets extend for several cm. Under usual commercial growing conditions, most of the root system is within the first 60-100 cm radius from the plant and reaches to 20-40 cm in depth (though roots have been found to 150-180 cm deep in exceptional soils) (Blomme *et al.*, 2000; Belalcázar *et al.*, 2005; Draye *et al.*, 2005; Turner *et al.*, 2007).

28. There are two conspicuous main phases in the development of the banana plant: a vegetative phase characterised by the appearance of leaves, and a reproductive phase during which the inflorescence emerges (Stover and Simmonds, 1987; Karamura and Karamura, 1995; Turner *et al.*, 2007). This is a simplification of the actual developmental process, as the apical meristem has already differentiated from its vegetative phase into a reproductive meristem before the appearance of the last new leaves. At the transition from the vegetative to the floral stage the plant's growing point shifts mitotic activity, with the whole dome contributing to the aerial stem and inflorescence development. Six months or more after planting, the inflorescence tip first appears at the top of a pseudostem, and the inflorescence continues to elongate and mature, in crop plants typically turning downward. Floral clusterings appear, enlarge, and differentiate into flowers. This elongating aerial stem is totally dependent for its mechanical support upon the surrounding mass of leaf sheaths (the pseudostem).

29. The large inflorescence is composed of flowering clusters which occur helicoidally along its axis (reproducing the phyllotaxy pattern of the leaf system) and are each covered by a large typically reddish to purplish bract. Each nodal cluster has 12-20 flowers, which are aligned in two tightly adjacent rows. The flowers in a cluster usually are either functionally female or male (see Section V), but sometimes are hermaphroditic or neuter (Kwa and Tomekpé, 2000). The first (*i.e.* basal) 3-9 (to 18) clusters, or hands, are female and give rise to the edible fruits — often known as fingers. Subsequent (*i.e.* more distal) clusters are of an intermediate or usually a male character and do not produce edible fruit (in most cultivars, rudimentary fruitlets fall before the edible fingers mature). The distal portion of the inflorescence may continue to elongate and produce many clusters of male flowers from its large terminal bud (which however is absent in some varieties). The group of commonly 5-15 fruiting hands which constitutes the basal portion of the inflorescence is the harvestable unit, called a bunch.

30. Commercial fruits typically develop by vegetative parthenocarpy (*i.e.* with neither fertilisation nor pollination required), and are completely seedless and sterile. The maturing fruits typically bend upwards in some cultivars, whereas in other cultivars the fruits splay outwards from the inflorescence stalk. Normal commercial bunch weight is 15-30 kg although bunches over 45 kg are not unusual when plants are properly cultivated (and exceptional cases over 125 kg have been recorded). A medium-sized dessert banana finger weighs around 160 g (whereas most wild *Musa* fruits are about 30 g to rarely 80 g).

31. Up to 2 years are required in a fruiting cycle. Depending on climate, cultivation conditions and the cultivar, vegetative growth lasts 6 to 12 months, and the period between emergence of the inflorescence and harvesting of the bunch can be 2.5 to 10 months (Stover and Simmonds, 1987; *cf.* Turner *et al.*, 2007). The time from planting to shooting (inflorescence emergence) generally varies from about 180 to 250 days. Shoot to harvest time in most tropical areas below 500 m elevation varies from about 75 to 125 days, and from about 110 to 250 days in most subtropical areas.

32. Although the principal plant dies after producing fruit, the whole plant is perennial in as much as suckers successively replace the senescent aerial part without need for replanting. Several suckers emerge consecutively from buds located at leaf axils on the rhizomatous rootstock (Kurien *et al.*, 2002). Under

commercial cultivation most suckers are regularly eliminated — leaving to replace the mother plant either the firstly emitted vigorous sucker, or the sucker capable of producing a bunch when better prices can be obtained. During the dependent or juvenile phase, the sucker develops short narrow (lanceolate) leaves that increase in size sequentially until the appearance of the well-developed adult leaves. The subsequent independent phase (easily distinguished in the Cavendish subgroup of cultivars) is signaled by the first adult leaf, which has an orthogonal angle at the base of the blade's left half (as viewed from beneath) (Galán Saúco, 1992).

3.2. Abiotic environment

Edaphic adaptation

33. Bananas can be cultivated in soils of varied textures, from very sandy to very clayey, although the former extreme may require more frequent watering or a mulching system to maintain water content, and the latter extreme causes problems of aeration. Good soil drainage is necessary to cultivate the crop efficiently (Simmonds, 1966/1973). Soil depth should be at least 80 cm and preferably reach 120 cm, but can be as shallow as 40-60 cm for single-cycle high-density plantations from *in vitro* plant material (Stover and Simmonds, 1987).

34. A high content of organic material (> 2.5%) and pH range between 6 and 7 are optimal, but values between 4.2 and 8.1 are found in established plantations (Soto, 1985). A good soil must have large amounts of potassium (K) and magnesium (Mg). Generally 200-350 mg of potassium per kg of soil is considered enough (unless the soil has large quantities of calcium). The K/Mg ratio must be around 0.25 in sandy soils and close to 0.50 in heavier soils. Soils with a high content of soluble potassium render banana plants more tolerant to salts. Under these conditions the development of the plant is not affected in soils with conductivity up to 7 dS/m (Stover and Simmonds, 1987). Average annual fertiliser applications to the commercial crop are often in the range of 200-450 kg/ha nitrogen (N₂); 400-1200 kg/ha potassium (K₂O); and 40-96 kg/ha phosphorus (P₂O₅) (Lahav and Turner, 1983; Soto, 1985).

Light

35. Light intensity under normal plantation densities and crop conditions is not a serious concern. But a lack of light, for example from excessive plantation density, can cause a prolonged plant cycle, and mild sun exposure together with excess water reduce growth and development. Photosynthetic activity increases rapidly at light intensities between 2,000 and 10,000 lux, and increases further between 10,000 and 30,000 lux. Except under extreme conditions, day-length variations do not have a substantial influence (Champion, 1963/1968; *cf.* Turner *et al.*, 2007). Exposure to high light intensities combined with high temperatures causes scorching in the plant.

Temperature

36. The rate of plant growth and time to fruit maturity are chiefly determined by temperature. Optimum temperature for foliar growth is 26-28°C (Ganry, 1980), and for fruit development is slightly higher at 29-30°C. Temperatures of 37°C or more cause leaf scorch, and growth stops at 38-40°C. As for low temperatures, foliar emergence for the tallest Cavendish clones stops below 16°C and all growth stops at about 10°C (Aubert, 1971; Stover and Simmonds, 1987). Flower development is strongly affected by temperature (Turner *et al.*, 2007). If low temperatures (10-15°C) occur prior to flowering, the emergence of the inflorescence must overcome the pressure imposed by leaves that remain blocked. Consequently, the true stem can be twisted and the pseudostem broken (Stover and Simmonds, 1987). When emergence of the inflorescence is difficult, it is necessary to help by making a “caesarean” cut. Even in cases free of blockage, floral differentiation during subtropical winter may result in the generation of bunch

malformations (typically in May in the northern hemisphere, November in the southern hemisphere). Low temperatures — even close to the normal of 12°C for fruit transport — cause fruit damage, such as uneven softening of the pulp during ripening and shortening of shelf life. Below 9°C, latex coagulation occurs in the pericarp and the fruit's ripening capacity is lost (Stover and Simmonds, 1987).

Water requirements, humidity and wind

37. The banana plant's hydric state is generally considered the second main factor responsible for growth and development and fruit production, being particularly important above 20°C. The plant has high water requirements due to its fast development and large foliar area, but it has some tolerance to drought apparently by closing stomata and maintaining strong root pressure (Turner *et al.*, 2007). A plant's typical daily water transpiration has been estimated to vary between 5.6 mm under direct sun exposure and 1.9 mm when totally cloudy (Champion, 1963/1968; Turner *et al.*, 2007). The amount needed increases as the temperature rises, and above 30°C the water consumption can double. Between 60% and 80% relative humidity is ideal (*cf.* Lu *et al.*, 2002).

38. In regions of limited rainfall intensive modern plantations are equipped with drip irrigation systems, but sprinkling or flood irrigation systems are still frequent in many plantations. Bananas can tolerate 48 hrs of flooding with flowing water (*e.g.* after a storm), but stagnant water with full sunshine kills adult plants.

39. In general, cultivars better adapted to subtropical conditions also better tolerate wind speeds up to 40 km/hr. But at the higher speeds severe crop damages occur, and wind above 55 km/hr can cause total destruction of the plant.

3.3. Cultivation practices

40. The main commercially important *Musa* cultivars are grown alone, commonly in open-air plantations in the tropics. Cultivar selection, planting design and culture practices play important roles in the plant's development. The most frequent designs in commercial plantations have 2000 to 2400 plants per hectare, with 2 or 3 plants per planting hole, aligned in rows that are separated by wide aisles. Particular cultivars can be difficult to manage depending on the planting distances. Cutting off several leaves after flowering is often recommended to favour light penetration for plant development. Modern planting designs use drip irrigation and mulching, which facilitates mechanical and chemical weed control. Lists of weeds commonly associated with banana cultivation, and herbicides commonly employed, are provided by Belalcázar *et al.* (1991).

41. In subtropical regions where climatic requirements may not be sufficiently fulfilled, greenhouse cultivation offers the possibility of increasing fruit quality and yields. Spain (Canary Islands) and Morocco are the major countries producing banana under greenhouse, both with about 3000 ha. Commercial greenhouse cultivation is also carried out in Greece (Crete) (400 ha) (Galán Saúco, 1992), South Africa (3 ha) (Eckstein *et al.*, 1998), and several other countries including Portugal, Tunisia, Turkey, Cyprus, Korea and Argentina. Israel has been interested in increasing greenhouse plantation (beyond about 50 ha) mainly due to the reduction in water consumption.

42. In many parts of the humid tropics *Musa* is grown traditionally with other crops (Rodrigo *et al.*, 1997; Norgrove and Hauser, 2002; Achard *et al.*, 2004). As the *Musa* plants require a large interrow, other crops may be successfully grown in between. For example *Dioscorea* (yams), *Alocasia macrorrhizos* (giant taro) and *Piper methysticum* (kava) are intercropped in Micronesia, and *Colocasia esculenta* (taro, cocoyam) in Papua New Guinea. In southern Nigeria intercropping with *Manihot esculenta* (cassava) was found to reduce yield but also the incidence of black Sigatoka disease. In southern Cameroon the fields are

prepared by clearing secondary forest manually and intercropping plantain with *M. esculenta*, *Cucumeropsis mannii* (white-seed melon, egusi-itoo) and *Xanthosoma sagittifolium* (yautia, tannia). *Musa* is also grown as an intercrop in the early stage of establishing plantations of coconut (*Cocos nucifera*), betelnut (*Areca catechu*), coffee (*Coffea* spp.), black pepper (*Piper nigrum*), cocoa (*Theobroma cacao*) and rubber (*Hevea brasiliensis*). *Musa* is sometimes grown in combination with timber production, for example under *Casuarina* trees in the Papua New Guinea highlands and *Ficus natalensis* (Natal fig) in southwestern Uganda.

Propagation

43. Most edible bananas and plantains are vegetatively parthenocarpic, producing fruits without needing any stimulus from pollination or seed development. Because the fruits of most cultivars are either always or normally seedless, agricultural propagation is principally asexual by means of suckers and other vegetative multiplication techniques, including micropropagation. Plants are generally propagated from traditional planting material (which may be obtained from commercial plantations), either emerged suckers (of different sizes) or sucker corms originating from apical buds, or from the lateral buds of corms or rhizomes of decapitated grandmother plants (which may have or lack suckers). Modern plantations are being established with plants propagated through *in vitro* culture (Section VII), which provides a large quantity of uniform, disease-free (including virus-free) plants. This approach however can generate somaclonal variants that result in off-type plants if not properly managed.

Sucker selection and desuckering

44. As a general rule, the more advanced the development of the mother plant, the taller must be the sucker selected to replace it in the plant's following cycle. In the tropics it is generally recommended to preserve the axial sucker, which is normally the most vigorous and was first emerging from the mother plant (Champion, 1963/1968; Simmonds, 1966/1973). In South Africa and Israel deep-emerging suckers are preferable (particularly the axial sucker). However, given these subtropical climates, the period of flower differentiation is also matched with the warmest months in summer. This is done to achieve better yields and direct the harvest period to wintertime when prices are traditionally higher. In the Canary Islands the usual desuckering practice is elimination of new shoots emerging during wintertime (before April). The sucker that will replace the mother plant is chosen in June or July from among those that emerged in the springtime.

45. Desuckering by mechanical or chemical means eliminates undesired suckers and so enhances the plant's yield (*cf.* Kurien *et al.*, 2006); only those suckers that will support continuity of the plantation are kept. Desuckering can be accomplished by repeatedly cutting off the emerging plant at ground level, the mechanical removal of the apical meristem, or application of 2-5 ml of kerosene; 2.5 ml per plant can be injected directly through the leaf bases of intact, 10-40 cm high suckers. For plants started from *in vitro* culture, which have high sucker proliferation during their first cycle, desuckering must be done before new shoots are over 40 cm high to avoid competition and toppling of the mother plant.

Practices enhancing fruit development

46. The developing commercial fruit is protected by carrying out several operations to prevent the bunch from falling to the ground and appearance of skin blemishes. The first practice is deleafing — leaves that may be touching the newly developed hands are cut off, and collapsed and leaf-spot infected leaves are removed. Next are bagging, debudding, and dehanding. This operation consists of bagging the bunch, removal of the male-flowers bud (the distal portion of the inflorescence), and breaking off the false hand plus one or two of the smallest apical hands. Bunch-bagging is a common practice to reduce the time between flowering and harvest, and improve fruit yield and quality. The bags are cylindrical (open-ended),

perforated, and made of transparent or blue polyethylene; the ends are left open but secured to avoid wind damage. Bags are normally placed after the bunch deflowering and application of insecticide.

3.4. Harvest and storage

47. Most of the fruit's pulp develops from the outer part of the ovary loculus (Stover and Simmonds, 1987). Fruit is age-graded in order to prevent the occurrence of ripe fruits during storage and transport. Determination of the ripening stage is normally done by observation of the bunch-filling degree (which varies depending on the time after emergence of the inflorescence or flowering and the month of bunch formation), the size of the fruit and fruit angularity, its specific gravity, and pulp-to-skin ratio. Quality rules have established that the minimal finger thickness must reach 27 mm.

48. Bunch cut-off at harvest time must be done with extreme care. One worker partially cuts the pseudostem halfway up its length (not necessary for Dwarf Cavendish) while the other puts the bunch on his shoulders and holds it firmly until the first worker cuts the rachis across just above the first hand.

49. Banana is a highly perishable fruit, with post-harvest losses of 30-40% (Salunkhe and Desai, 1984). Methods for extending the shelf life of fruits include the harvesting of bunches a few days before they reach full maturity, storage at reduced temperatures (about 15°C), storage in a modified atmosphere of enriched CO₂ with low O₂ (3-4%), packing in film bags to prevent weight loss, pre-treatment with fungicides, and skin coating (Waskar and Roy, 1996). For cultivars susceptible to high levels of CO₂ an alternative storage method is vacuum packing (Mary and Sathiamoorthy, 2003).

SECTION IV. DISEASES AND PESTS

50. The most relevant interactions between cultivated bananas and plantains and other organisms are the effects of agricultural diseases and pests, and as well weeds. Bananas and plantains are affected by many diseases and pests, some of which are of profound importance for these major food crops. The main diseases have been summarised by Ploetz *et al.* (2003), the main pests by Gold *et al.* (2002). Some commonly serious or critical diseases and pests (Jones, 2002) are discussed below (also note Table 2, in Section VI).

4.1. Fungi

51. *Musa* plants are known to provide substrate for over 200 species of fungi (a zygomycete, 60 ascomycetes, 23 basidiomycetes, and 120 mitosporic fungi) (Photita *et al.*, 2002).

52. Sigatoka leaf spot diseases of banana involve two related ascomycetous fungi: *Mycosphaerella fijiensis*, which causes black leaf streak disease, commonly known as **black Sigatoka**; and *M. musicola*, which causes Sigatoka disease, now usually known as **yellow Sigatoka** (Mourichon *et al.*, 1997; Marín *et al.*, 2003). Symptoms include respectively dark brown or pale yellow streaks on lower leaf surfaces and large areas of leaf destruction, which causes premature fruit ripening and reduces yields. Black Sigatoka is the more serious because younger leaves show symptoms and more damage is caused to photosynthetic tissue, and it affects many cultivars such as plantains and cooking bananas that have resistance to yellow Sigatoka (Manzo-Sánchez *et al.*, 2005). **Eumusae leaf spot disease** (formerly Septoria leaf spot disease), caused by *M. eumusae*, has been recognised relatively recently, occurring in several countries across eastern Asia as well as Mauritius and Nigeria (Carlier *et al.*, 2000; Crous and Mourichon, 2002).

53. Black Sigatoka has been reported throughout the Pacific, Asia, Africa, Latin America and the Caribbean. Yield losses from 30-50% have been reported (Mobambo *et al.*, 1993). As much as 27% of production costs in tropical America can go to its control (Stover and Simmonds, 1987), and the disease can be responsible for 15-20% of exported fruit's retail price. Yellow Sigatoka is one of the classic global plant epidemics from the first half of the 20th century, and has now been reported in most banana-growing areas. Devastation of commercially grown bananas by the Sigatoka diseases and the danger to a major food staple led to creation in 1984 of the International Network for the Improvement of Banana and Plantain (INIBAP). Perhaps no other diseases or pests have so seriously jeopardised banana production throughout the world (Marín *et al.*, 2003).

54. In commercial plantations systemic fungicides are used to control black Sigatoka, but resistance to some fungicides has developed in strains of both *M. fijiensis* and *M. musicola*. Incorporating genetic resistance into the crops has become the long-term goal (see Section VI).

55. **Fusarium wilt or Panama disease** of banana is caused by several soil-inhabiting fungi called *Fusarium oxysporum* f. sp. *cubense* (Ploetz, 2006). The disease has been reported from all banana-growing regions except Melanesia, some South Pacific islands and some countries bordering the Mediterranean; it is regarded as one of the most destructive plant diseases of modern times (Moore *et al.*, 1995; Ploetz, 2000, 2005a, 2005b). Some clones in the AAA Cavendish subgroup are susceptible,

including ‘Valery’, ‘Grande Naine’ and ‘Williams’, as well as some clones in the AAB group (e.g. ‘Silk’, ‘Pome’) and the ABB Bluggoe subgroup. The decline of commercial plantations of ‘Gros Michel’ resulted in a shift in the mid-20th century to cultivars in the Cavendish subgroup as the main export banana types (Ploetz, 2000, 2005a, 2005b). However, in the early 1990s Cavendish plantations in Southeast Asia and northern Australia began to experience significant losses (Hwang and Ko, 2004).

56. External symptoms include yellowing of leaf margins which spreads from the oldest to youngest leaves, and lengthwise splitting of the lower portion of the outer leaf sheaths. The leaves gradually collapse and die (forming a skirt around the pseudostem), and new leaves are pale and small. Many infected suckers may be produced before the clump dies.

57. Several factors influence the development of this disease — the fungus strain and crop cultivar, drainage, environmental conditions and soil type. Four races of *Fusarium oxysporum* f. sp. *cubense* are typically recognised. Three races are pathogenic to particular sets of *Musa* cultivars. Race 1 caused the collapse of the ‘Gros Michel’ export trade. The now-emerging tropical race 4 affects cultivars that produce 80% of the world’s bananas and plantains (Ploetz, 2005b, 2006). These pathogens also colonize alternative hosts, such as relatives of banana and several weed species. The fungi can survive in soil for up to 30 years as chlamydospores, in infested plant debris, and in the roots of alternative hosts. Spread is most commonly by infected rhizomes or suckers and adherent soil. The disease can spread very rapidly if spores are carried in surface runoff water or contaminate an irrigation reservoir.

58. Soils in which microbial populations suppress the pathogens are found in Central America, the Canary Islands, South Africa and Australia. Chemical control, flood-fallowing, crop rotation and use of organic amendments have not been very effective. The best means of control is host resistance (*cf.* Javed *et al.*, 2004). Useful AAB and ABB hybrids have been bred (Table 2), but no Cavendish replacement. Biotechnology, mutation breeding and somaclonal variation are being employed to produce resistant genotypes (Ploetz, 2005b).

4.2. Unknown agents

59. **False Panama disorder** (de Beer *et al.*, 2001), which can easily be confused with Fusarium wilt, was first described by Deacon *et al.* (1985). Cavendish bananas in South Africa and the Canary Islands are affected, but other dessert bananas and plantains are affected in Panama, Colombia, Surinam and Grenada. The incidence is usually low, but as much as 60% (perhaps more) of a plantation can be impacted.

60. External symptoms include yellowing of leaves, necrosis, leaf death, and small bunches. The discoloured vascular strands are usually discontinuous. Examination of a rhizome that has been split open characteristically shows brown spots and white strands.

61. False Panama disorder seems not to appear at old plantations, nor to be transmitted from one plant to another. Although it has not been possible to isolate a pathogen from affected plants, it is accepted that a fungal pathogen is not the primary cause. Factors influencing the appearance of the disorder may include low temperatures, nematodes, drought, nutritional imbalances and waterlogging (Rabie, 1991; de Beer *et al.*, 2001). The incidence of the disorder can be kept down or prevented by reducing stress to newly planted material.

62. Another serious disorder that can be confused with Fusarium wilt has been called **matooke wilt**, although it is of unknown aetiology. At first thought to be limited to East African Highland bananas (in Uganda matooke refers to traditional bananas), it was later found in Uganda on more recently introduced types as well (Kangire and Rutherford, 2001). Leaves may appear healthy or be smaller with marginal necrosis. Pseudostems are thin, dry and weaker, and fruits small and less developed. Internally the

pseudostem has conspicuous brown to purple vascular strands. Affected plants are found in areas where household or animal wastes have been discarded.

4.3. Bacteria

63. **Moko disease** is a vascular wilt of bananas and plantains caused by strains of phylotype II (“race 2”) in the *Ralstonia solanacearum* (*Pseudomonas solanacearum*) complex (Eyres *et al.*, 2005; Fegan and Prior, 2006); it was first reported in the 1890s in Trinidad. In the Caribbean, Central America and South America this bacterial wilt has caused severe losses in smallholder plantations; it is nearly absent in the eastern hemisphere, but has been found in the Philippines. The Cavendish subgroup (AAA) and some ABB cultivars (*e.g.* ‘Bluggoe’) are susceptible, whereas ‘Pelipita’ (ABB) is highly resistant, and the Horn plantain (AAB) is seldom infected. **Bugtok disease**, widespread on cooking bananas (*e.g.* ‘Saba’, ‘Cardaba’) in the Philippines, is similar and apparently caused by the same bacterium complex (Soguilon *et al.*, 1995; Hayward, 2006).

64. Another bacterial vascular wilt, **banana blood disease**, is caused by strains of phylotype IV (“race 4”) of the species complex (Eden-Green, 1994; Fegan and Prior, 2006). This disease was first reported in about 1914 from South Sulawesi in central Indonesia, causing the abandonment of dessert banana plantations being developed on a nearby island. Although its distribution was very limited, it has recently been spreading in Java and elsewhere in Indonesia and poses a serious threat.

65. Its symptoms are similar to those of Moko disease, and vary according to the growth stage of the plant and route of infection. They include a conspicuous transient yellowing, loss of turgor, desiccation and necrosis. The youngest leaves cease emerging and develop whitish and then necrotic panels in the lamina. Blackening and shrivelling of male flowers is frequently found in mature plants. Daughter suckers may show general wilting, but sometimes healthy suckers are produced. Internally, vascular bundles exhibit a reddish-brown discolouration, and the fruits are usually uniformly discoloured reddish-brown and rotten.

66. Infection occurs via inflorescences, and the disease is transmitted by insects or infected planting material; the pathogen can probably persist in soil or plant debris. Fruits from infected plants may be a source of infection, as affected bunches can appear normal. Sanitation measures include disinfection of cutting tools, field sanitation and selection of disease-free planting materials.

67. **Banana Xanthomonas wilt** (or banana bacterial wilt) is a devastating disease emerging in East Africa to which most cultivars appear vulnerable; it is caused by *Xanthomonas vasicola* pv. *musacearum* (Biruma *et al.*, 2007). Symptoms are somewhat cultivar-specific and determined by route and stage of infection. Foliar symptoms often resemble those of Fusarium wilt, but excretion of a yellowish bacterial ooze from cut tissues is characteristic of this new disease. Yield losses, which can reach 100%, vary with cultivar susceptibility, crop growth stage at infection and prevailing climatic conditions, with effects being worse during seasons of high rainfall. Disease transmission and sanitation measures appear similar to those given above for banana blood disease.

4.4. Viruses

68. **Banana bunchy top disease**, the most important widespread viral disease of banana, is caused by a babuvirus (Nanoviridae) transmitted locally by the banana aphid *Pentalonia nigronervosa* (Thomas *et al.*, 1994; Ferreira *et al.*, 1997; Su *et al.*, 2003). The disease is native to Southeast Asia, and occurs in many countries of the eastern hemisphere (including Pacific islands); it has also been detected in the southern Caribbean on the island of Curaçao. The disease can cause devastating plantation losses, which have reached 100% in some districts of Pakistan (Pietersen and Thomas, 2003). Infected plants have a rosetted appearance with narrow, upright and progressively shorter leaves. Leaf edges roll upwards and show

marginal yellowing. Dark green streaks are found on midrib and petiole, extending downward into the pseudostem. The symptoms only appear on the leaves forming after infection — most diagnostic are short dark green dots and dashes along the minor leaf veins, which form hooks as they enter the edge of the midrib.

69. All tested *Musa* species and cultivars appear susceptible to the banana bunchy top virus (BBTV), but the incubation period may vary. BBTV is controlled by eradication of diseased plants, and use of virus-free planting material. Severe attacks may require strict programmes with the goal of regional eradication.

70. **Banana streak disease** was first recognised in Côte d'Ivoire in the mid-20th century and later reported in Morocco, where the incidence of infection exceeded 50% in many 'Dwarf Cavendish' plantations. Banana streak badnaviruses (BSVs) (Caulimoviridae) have been found worldwide, infecting a wide range of *Musa* genotypes, with yield losses of 7-90% (Lockhart, 1995; Lockhart and Jones, 1999; Agindotan *et al.*, 2006). Co-infection with banana mild mosaic virus (BanMMV) (Flexiviridae) can increase the disease's severity (Pietersen and Thomas, 2003). Although some clones are asymptomatic or tolerant of field infection, the broad range of cultivars susceptible to BSVs include the Cavendish subgroup, 'Gros Michel', Highland bananas, plantains and cooking bananas. The modern increase and movement of *Musa* germplasm, including the tissue cultures of improved hybrids, have been significantly affected by the risk of spreading these badnaviruses.

71. Several *Badnavirus* species are recognised to be involved in this disease complex (Lheureux *et al.*, 2007; Gayral *et al.*, 2008). Disease can result from a BSV species transmitted exogenously, but can arise endogenously as well. Varied DNA sequences from BSVs have integrated into both the B and A genomes. Viral sequences (integrant virus species) in the B genome can become activated and cause disease, for example as a result of stress from tissue-culturing plants (micropropagation), sexually creating interspecific hybrids for breeding purposes, or temperature shifts (Ndowora *et al.*, 1999a, 1999b; Geering *et al.*, 2005; Fargette *et al.*, 2006; Gayral *et al.*, 2008). Practical molecular methods are being devised to detect the DNA of episomal BSV infecting *Musa* separately from concomitant BSV endogenous pararetroviral sequences (Agindotan *et al.*, 2006; Le Provost *et al.*, 2006).

72. Symptoms of banana streak disease vary considerably — depending on the pathogen species and strain, host cultivar, environment and season — from inconspicuous chlorotic flecking to lethal chlorosis. The most common symptoms are chlorotic streaks and blotched leaves. Other symptoms include streaks in the pseudostem, narrow leaves, constriction and reduction of the bunch, fruit-peel streaks and peel splitting. Transmission by citrus mealybugs (especially *Planococcus citri*) occurs, but spread is primarily by multiplication and dissemination of infected planting material. Control consists mainly in use of starting materials (in the lab and the field) free of both non-integrant BSVs and B-genome integrated virus sequences, and the prompt elimination of infected plants.

73. **Banana bract mosaic disease** is widespread in the Philippines and has been found as well in Vietnam, Thailand, India, Sri Lanka and Western Samoa. A potyvirus, banana bract mosaic virus (BBrMV), has been isolated from infected plants (Thomas and Magnaye, 1996; Thomas *et al.*, 1999). BBrMV occurs in a wide range of edible banana genotypes. It is common in the ABB cultivars 'Cardaba' and 'Saba' popular in the Philippines — up to 40% yield losses have been recorded there in 'Cardaba' and the also-popular 'Lakatan'. BBrMV and another potyvirus, abacá mosaic virus (AbaMV), also infect *Musa textilis* in the Philippines (Pietersen and Thomas, 2003).

74. The diagnostic symptom of BBrMV disease is a dark reddish-brown mosaic pattern on the bracts subtending male flowers in the inflorescence. Initial symptoms (depending on cultivar) include green or reddish-brown streaks or spindle-shaped lesions on the petioles and a congested leaf arrangement. Lamina symptoms, spindle-shaped chlorotic streaks parallel to the veins, are most prominent on young leaves in

recent infections. When dead leaf sheaths are pulled away from the pseudostem, distinctive dark-coloured mosaic patterns, stripes or spindle-shaped streaks are visible. There are no reports of mechanical transmission, but BBrMV is transmitted by several species of aphids. The virus is also transmitted in vegetative planting material including “bits”, suckers and tissue-cultured plantlets.

75. Strains (in subgroup I but as well II) of **cucumber mosaic cucumovirus** (CMV) (Bromoviridae) are increasingly being found on bananas, and may cause no symptoms or mild to in some cases severe disease — chlorosis, mosaic and heart rot (Pietersen and Thomas, 2003). CMV occurs worldwide, has the largest host range of any plant virus, and is transmitted by many species of aphids. It is particularly important to use CMV-free source material for *in vitro* mass propagation. Agronomic practices include co-operation regionally to avoid growing other host crops nearby and eliminate weed hosts.

4.5. Insects

76. The **banana weevil or banana borer** *Cosmopolites sordidus* (Coleoptera: Curculionoidea, Dryophthoridae) generally is the most important insect pest of banana and plantain and also impacts the related Musaceae crop enset (genus *Ensete*) (Gold and Messiaen, 2000; Gold *et al.*, 2001). Losses of more than 40% to even 100% of the planting have been recorded, as the weevil populations increase in successive cropping cycles. Problems are most severe in plantains and Highland cooking bananas, contributing to disappearance of the latter crop in parts of East Africa (Kiggundu *et al.*, 2007). In commercial Cavendish plantations, this weevil has been reported to be relatively unimportant.

77. The species evolved in Southeast Asia (Malaysia-Indonesia) and has been spread to all banana and plantain production regions. Adults are attracted by volatiles emanating from the host plants. Cut corms and young suckers are especially susceptible. Larvae bore into the corm and interfere with root initiation, kill existing roots, limit nutrient uptake, reduce plant vigour, delay flowering, and increase susceptibility to diseases and other pests, and to toppling by wind.

78. Control in commercial banana plantations is mainly chemical, using nematicides with insecticidal activity and specific insecticides. However, the banana weevil has shown the ability to develop resistance to most classes of chemicals. Botanical compounds may serve as deterrents. Hot-water treatment has been widely promoted for control. Significant biological control may sometimes be achieved via foraging ants (*e.g. Pheidole* and *Tetramorium*, Myrmicinae), some species of which will even forage in the weevil's tunnels (Abera Kalibata *et al.*, 2007).

79. Primary sources of resistance are found in some wild accessions or clones, such as Calcutta 4 (group AA), ‘Yangambi-Km 5’ (AAA), FHIA-03 (AABB) (or its parents), Kayinja (ABB) and the IITA diploid hybrids TMB2x 7197-2 and TMB2x 8075-7 (Pavis and Lemaire, 1996; Kiggundu *et al.*, 2003, 2007).

80. The **banana stem weevil or banana pseudostem borer** *Odoiporus longicollis* (Coleoptera: Curculionoidea, Dryophthoridae) is among the most important pests of banana and plantain (Padmanaban and Sathiamoorthy, 2001). The species is believed to have originated in the region of South Asia and Southeast Asia. It is a key pest in India, China, Thailand, Malaysia and Indonesia (Valmayor *et al.*, 1994). Plantains and Highland bananas are preferred. The weevil can cause 10-90% yield loss depending on crop growth stage and management efficiency.

81. Adults are attracted by volatiles released by the host plants. Infestation normally starts in 5-month-old plants, retarding growth and development, and increases susceptibility to wind lodging. Early symptoms include pinhead-sized holes in the pseudostem, exudation of a gummy substance, and fibrous

extrusions from the base of petioles. The pseudostem shows extensive tunnelling in the leaf sheaths. Rotting occurs due to secondary infection. The fruits are dehydrated, with premature ripening.

82. Chemical control involves injection of a systemic organophosphorus compound into the pseudostem or swabbing with either surfactants or mud slurry containing an insecticide, or fumigation. After harvest the banana stumps must be removed and destroyed. Natural enemies, including arthropods, entomopathogenic nematodes and entomopathogens have great potential as biological control agents to reduce the weevil population in severely infested home gardens.

83. Host plant resistance may offer a long-term solution. Charles *et al.* (1996) identified 27 *Musa* accessions that exhibited tolerance to the pest. A high degree of resistance can be found in some *Musa balbisiana* clones.

4.6. Nematodes

84. The **burrowing nematode** *Radopholus similis* is one of the most important root pathogens attacking bananas in the tropical zone (Sarah *et al.*, 1996), especially in Cavendish types. Vegetative propagation using infested corms or suckers has disseminated this pest worldwide (Marín *et al.*, 1998). It is common on plantains and cooking bananas, except in Central America, West Africa, the highlands of central-eastern Africa and subtropical zones of production. The distribution is mainly due to the species' preference for a temperature range from 32° to 24°C.

85. *Radopholus similis* is a migratory endoparasite, completing its life cycle in 20-25 days in root and corm tissues. Their destruction results in reduction of host growth and development, even to uprooting and toppling. Yield losses can be reduced through propping or guying pseudostems. There can be severe losses in bunch weight, and a longer time between harvests. Crop losses depend on soil fertility, drainage and nematode pathogenicity, and vary from 15 to 30 to 75% in three cycles of production.

86. Nematode populations may be reduced to an undetectable level by a 1-year fallow with non-host plants, 6-7 weeks of complete flooding, or soil fumigation. Recontamination of soil is avoided through use of nematode-free plants and treated corms or suckers.

87. Sources of resistance are found in several genome groups in *Musa acuminata* and *M. balbisiana* wild and cultivated diploids (Dochez *et al.*, 2006). Pisang Jari Buaya (AA) cultivar types are the source of resistance in the modern AAAB cultivar 'Goldfinger'. 'Yangambi-Km 5' (AAA) also shows resistance. Endophytes of *Fusarium oxysporum* can induce systemic resistance to *R. similis* (Vu *et al.*, 2006).

88. The **root-lesion nematodes** *Pratylenchus coffeae* and *P. goodeyi* are major pests of *Musa* wherever they occur (Bridge *et al.*, 1997). *Pratylenchus coffeae* is probably a native of the Pacific and Pacific Rim countries but now has a worldwide distribution, especially affecting Southeast Asia. In Central America and South America it is the most important nematode species affecting Cavendish cultivars, whereas in Africa it affects plantains. This species has an extremely wide host range and is a major pest on other crops. In contrast, *Pratylenchus goodeyi* has a much more restricted distribution. It is considered indigenous to Africa, and is an important pest of Highland bananas and plantains. It is the main nematode affecting Cavendish bananas in the Canary Islands and has the potential to become an important pest where bananas are grown in cooler climatic zones of the Mediterranean and Middle East.

89. *Pratylenchus coffeae* and *P. goodeyi* are both migratory endoparasites of the root cortex and corm of banana, plantain and abacá (*Musa textilis*). Their presence in banana root lesions is generally highly correlated with infection by fungi. Nematode populations are reduced by a bush fallow period exceeding one year, removal of roots, paring of corms to remove the lesions and exposure to direct sunlight.

Hot-water treatment eradicates almost all nematodes from planting material. The nematicides for control of *Radopholus similis* are expected to be equally effective for the root-lesion nematodes.

90. **Root-knot nematodes**, especially *Meloidogyne incognita* and *M. javanica*, occur on banana and plantain roots wherever the crops are grown (De Waele and Davide, 1998). These nematodes are often found with *Radopholus similis* and *Pratylenchus* spp., which tend to outnumber and eventually replace the root-knot nematode populations but provide feeding sites for *Meloidogyne*. *Meloidogyne* spp. can become abundant in areas where *R. similis* has not been introduced or the climate is too cold for it, or *P. goodeyi* is not present. In Asia, especially Southeast Asia, *Meloidogyne* spp. are often the most common and abundant nematode species on cooking and dessert bananas.

91. Root-knot nematodes often occur together with soil-borne fungi; there are indications that synergistic effects exist between these groups of pathogens, but they have not been documented. In roots of 'Grande Naine' infected with *M. incognita*, the endomycorrhiza *Glomus mosseae* isolates suppressed root galling and nematode build-up. *Glomus intraradices* increases plant growth by enhancing nutrition.

92. *Meloidogyne* spp. are sedentary endoparasites with a wide host range, especially on dicots. On banana and plantain the most obvious symptoms of infection are swollen, galled primary and secondary roots. Root-tip growth ceases and new roots proliferate just above the infected tissues, giving rise to a lower number of secondary and tertiary roots. Aboveground symptoms include yellowing and narrowing of leaves, stunted plants and reduced fruit production. Losses may range from 25 to 60%.

93. *Meloidogyne* spp. may spread with infected planting material. Corms can be disinfected by peeling followed by treatment with hot water, a nematicide, or 5-10 min of 1% sodium hypochlorite. Restraining methods include maintenance of weed-free fallows and cover crops or rotation systems. Limited fallowing may be ineffective, however, since *Meloidogyne* spp. can persist in the soil in the absence of bananas for up to 29 months.

94. Root extracts from the plants *Tagetes erecta*, *Leucaena leucocephala*, *Cynodon dactylon* and *Mimosa pudica*, bulb extracts from *Allium sativa* and *A. alia*, and leaf extracts from *Anthocephalus chinensis* and *Eichhornia crassipes* are highly effective against *M. incognita* egg hatching and infestation. Purified extracts of several *Penicillium* spp. (*P. oxalicum*, *P. anaticum*), *Aspergillus niger* and liquid and powder formulations containing *Paecilomyces lilacinus* and *Penicillium oxalicum* have shown high nematicidal activity.

SECTION V. REPRODUCTIVE BIOLOGY AND ECOLOGY

95. The male and female flowers of edible *Musa* differ in several respects (Simmonds, 1966/1973; Stover and Simmonds, 1987). The female flowers are larger (*e.g.* 10 cm long), with a well-developed inferior trilocular ovary that exceeds the somewhat tube-like toothed perianth in length, a stout style and stigma, but stamens reduced to staminodes. In male flowers the exerted stamens have well-developed anthers, but the ovary is rudimentary, with a slender style and small stigma. Beginning at the base of the inflorescence (Section III), each hand of female flowers is exposed by the opening of its large bract; as pollination is not necessitated in the crop plants, the ovaries continue to develop parthenocarpically into the persistent fruits (which lack an abscission layer). The male flowers of a cluster, after being exposed by its large bract for about 24 hrs from dusk to the subsequent night, typically abscise from the abortive ovary and are shed whole.

5.1. Pollination

96. Pollination is essential for development of fruits in wild species of *Musa*. Bats and sunbirds (Nectariniidae) as well as honeybees play main roles in the pollination ecology of *Musa*. The sticky pollen is transported by bats and/or birds seeking the copious nectar (in some cases also pollen), and/or by insects (Nur, 1976; Start and Marshall, 1976; Gould, 1978). In regions where suitable bats or sunbirds are not present, insects (*e.g.* honeybees) may play the key role in pollination — which then tends to be more local. *Musa* species with pendulous inflorescences are considered to be especially pollinated by bats, those with erect inflorescences by sunbirds (Itino *et al.*, 1991). *Musa itinerans* flowers produce nectar in two peaks, attracting both bats and birds, each at their respective time period during the night or morning, with both groups having similar pollination effectiveness (Liu *et al.*, 2002a). Production of scent and nectar by bananas and plantains suggests that pollination may occur from dusk to nearly mid-morning (Gould, 1978; Mutsaers, 1993). In South India, the production of nectar by *Musa ×paradisiaca* peaked at 20:00 hr (Elangovan *et al.*, 2000).

97. In wild populations of *Musa balbisiana* within its natural range in China, populations were pollinated by the long-tongued fruit bat *Macroglossus sobrinus* and insects as well as the sunbird *Arachnothera longirostris* (little spiderhunter); no gene flow was detected without animal vectors (Ge *et al.*, 2005). Throughout Southeast Asia the least blossom bat *Macroglossus minimus* is an important *Musa* pollinator. In lowland Papua New Guinea these bats are ubiquitous; in a study there the bats regularly visited both wild and cultivated *Musa* and had home ranges of 0.6-15.1 ha (averaging 5.8 ha) (Winkelmann *et al.*, 2003). In northeastern Papua New Guinea's Bismarck Archipelago, black-bellied fruit bats *Melonycteris melanops* are common (and endemic). Their home ranges of 0.5-9.2 ha (averaging 2.3 ha with a long axis of 371 m) had a core area that was based on one to six flowering cultivated banana plants, which were utilised for nighttime nectar feeding as well as daytime roosting (Bonaccorso *et al.*, 2005).

98. Populations of the pollinating long-tongued fruit bat (*M. sobrinus*) are diminishing in parts of southern China because of increasing forest use, thus genetically isolating wild populations of *Musa balbisiana* (Ge *et al.*, 2005). In northeastern Australia where the tropical forest is reduced and fragmented, southern blossom bats *Syconycteris australis* now utilise the floral resources provided by cultivated bananas (Law and Lean, 1999). In Papua New Guinea these common bats can have a home range of 2.7-13.6 ha, with a long axis of 263-725 m (Winkelmann *et al.*, 2000).

99. In the most primitive edible *Musa* cultivars in Southeast Asia seeds are of frequent occurrence (Stover and Simmonds, 1987). However, among cultivated bananas and plantains generally, pollination never or seldom results in seeds (*e.g.* Ortiz and Crouch, 1997; Ssebuliba *et al.*, 2006a). Seedlessness is due to a complex of causes involving sterility genes, polyploidy, and chromosomal structural changes in varying degrees depending on the cultivar or particular clone (Section VI). Most of the edible *Musa* are triploids and almost completely sterile (Vuylsteke *et al.*, 1993d). Much of the characteristic sterility in commercial clones for the export trade (*i.e.* the AAA Cavendish subgroup) is due to high inherent female sterility. Male gametic sterility does not always occur along with female sterility. Fertility can depend not only on maternal conditions (*cf.* Fortescue and Turner, 2005) but also the pollen available. The ‘Gros Michel’ dessert banana can produce many seeds if planted in areas where suitable pollen and pollinators are around. In screening germplasm of the International Institute of Tropical Agriculture (IITA) for viable pollen, nearly 40% of the *Musa* accessions (67 of 168) were sufficiently fertile for use as the male parent in breeding (Dumpe and Ortiz, 1996).

100. In a study of viability of pollen in the anthers just before anthesis along with a detailed review (Fortescue and Turner, 2004), some viable pollen was reported even in “male-sterile” triploids. Viability was calculated from the total quantity of pollen produced — between 11 and 1495 grains. Pollen of seeded diploid species was three times more viable than pollen of edible fertile tetraploids, which had three to four times more viable pollen than edible triploids. Among triploids cultivated in Australia, ‘Gros Michel’ had 13% viable pollen, and triploids from India could reach 29% viable pollen. Triploids used in the genetic improvement programme in Cuba had 40-43% fertile pollen (Landa *et al.*, 1999). The size of the spherical pollen grain increases with the ploidy level; in diploids the diameter is about 100 μ , in triploids 112 μ and in tetraploids 135 μ (Tenkouano *et al.*, 1998).

5.2. Seeds

101. Although the production of seeds in most cultivated varieties is either not possible or difficult and rare, in specialised breeding work some varieties can be forced to produce seeds (Section VI) (Stover and Simmonds, 1987; Tomekpé *et al.*, 2004; Ssebuliba *et al.*, 2006b). For example, Tomekpé *et al.* (2000) reported 0-183 seeds per bunch resulting from pollinating a triploid plantain (AAB) with the pollen from diploid bananas (AA). Pollen viability in plantains and cooking bananas is increased by high relative humidity, low temperature and low solar irradiance (Ortiz and Vuylsteke, 1995; Ortiz *et al.*, 1998a). These researchers found that seed set was highest in ABB cooking bananas, followed by AAB French Plantains, and lowest in AAA dessert bananas. Cultivars with two rather than three sets of homologous chromosomes thus had an increased frequency of viable eggs.

102. *Musa* fruits are consumed by many species such as bats, birds, rodents and primates, which in some cases can be considered pests of the crop (*e.g.* Naughton-Treves *et al.*, 1998; Duncan and Chapman, 1999; Liu *et al.*, 2002a; Tang *et al.*, 2005). Mature fruits of wild *Musa* have many seeds (*e.g.* 30-400). In the wild, utilisation of fruits by such mammals and birds can result in seed dispersal (*e.g.* Liu *et al.*, 2002a; Tang *et al.*, 2005; Meng *et al.*, 2008). *Musa balbisiana* was introduced and has now become naturalised in Taiwan (Chiu *et al.*, 2007). In Belize (Central America), this seedy species has become invasive locally in several relatively open disturbed areas (Meerman, 2003; Meerman *et al.*, 2003).

SECTION VI. GENETICS AND HYBRIDISATION

6.1. Genetic diversity and genomic architecture

103. There is quite limited information about most wild *Musa* species' ranges and habitats (De Langhe, 2000b). Wild populations apparently tend to be isolated, maintaining significant genetic diversity among the dispersed populations rather than within each population (Asif Javed *et al.*, 2002; Ge *et al.*, 2005; Wang *et al.*, 2007). In Southeast Asia where wild bananas occur naturally, they are often in open disturbed areas such as on steep slopes, and they are often among the first colonisers when natural regeneration follows forest clearance (*e.g.* Tang *et al.*, 2003) — thus showing pioneer characteristics. Semi-wild or free-living populations occur in human-made habitats such as the edges of cleared land and on roadsides. *Musa* genetic resources are now found in an array of habitats such as forest edges and openings, fallow land, and home gardens and farms. The human communities living around such habitats maintain variability through cultivation of traditional cultigens and landraces, and by conservation of natural areas and ecosystems (Sharrock and Engels, 1997; Uma and Buddenhagen, 2006). Both of the wild diploid progenitor species are still valuable genetic resources for banana improvement (De Lange, 2000b). Their populations contain important traits such as resistance to various diseases, and the ability to thrive in relatively dry and cool environments (Ude *et al.*, 2002b; Häkkinen and Wang, 2007; Wang *et al.*, 2007).

104. Knowledge of *Musa* had been limited due to the complex and varied genomes between sections, but with modern molecular methods great progress is being made. For example the traditional cooking bananas 'Pisang Awak' and 'Kluai Ngoen' have been reclassified and now are considered to have the genome AABB (Horry *et al.*, 1998; Pillay *et al.*, 2006). In recent years there have been studies on genome identification (Pillay *et al.*, 2000, 2006) and genome structure (D'Hont *et al.*, 2000). Genomic *in situ* hybridisation (GISH) can differentiate the chromosomes of the four designated genomes of the diploid species — A (*M. acuminata*), B (*M. balbisiana*), S (*M. schizocarpa*) and T (section *Australimusa* spp.) — and determine the genome constitution of interspecific cultivated clones (D'Hont *et al.*, 2000). The molecular characterisation of genomes in *Musa* and applications have been reviewed by Pillay *et al.* (2004).

105. The cytogenetics of the nuclear genome has been reviewed by Doležel (2004). The karyotypes of the *Musa* A and B chromosome sets appear similar (Osuji *et al.*, 2006). The diploid genome is rather small — Kamaté *et al.* (2001) measured the 2C nuclear DNA content of *M. balbisiana* as 1.16 pg, and *M. acuminata* averaged 1.27 pg with a variation of 11% between sampled subspecies, whereas triploid 2C values ranged from 1.61 to 2.23 pg (*cf.* Bartoš *et al.*, 2005). These diploids therefore have some 560 to 610 million bp of DNA (Kamaté *et al.*, 2001), of which about half has been estimated to be non-coding DNA (Hřibová *et al.*, 2007).

6.2. Natural or spontaneous hybridisation, genetic behaviour and genetic mapping

106. There are reports of probable natural hybridisation between wild species of *Musa* in their native ranges, and between wild subspecies of *Musa acuminata*, and of probable introgression in the wild. The following are representative observations (not a complete review, given the extent of incomplete botanical and genetic knowledge). For example, the native range of *Musa balbisiana* likely does not go as far south

as Java (*cf.* Häkkinen and Väre, 2008c) so the hybrid with *M. acuminata* found there (Simmonds, 1962) would be a spontaneous cross instead of a truly natural cross between indigenous species.

Musa acuminata ssp. *halabanensis* × *Musa acuminata* ssp. *sumatrana* — Indonesia (Sumatra) (Nasution, 1991)

Musa acuminata ssp. *malaccensis* × *Musa acuminata* ssp. *truncata*, including introgression — Peninsular Malaysia (Simmonds, 1962, but *cf.* Wong *et al.*, 2001a; Asif Javed *et al.*, 2002)

Musa acuminata ssp. *malaccensis* × *Musa acuminata* ssp. *siamea* — Thailand (De Langhe *et al.*, 2000)

Musa acuminata ssp. *banksii* × *Musa schizocarpa* — Papua New Guinea (Argent, 1976; Arnaud and Horry, 1997; Shepherd, 1999; Carreel *et al.*, 2002)

Musa acuminata ssp. *siamea* × *Musa laterita* — Thailand (*cf.* Simmonds, 1962; De Langhe *et al.*, 2000)

Musa acuminata × *Musa balbisiana* — Indonesia (Java) (Simmonds, 1962) — spontaneous

Musa balbisiana × *Musa nagensium* — Myanmar (Simmonds, 1962)

Musa balbisiana × *Musa sikkimensis* — Northeast India (Sikkim) (Simmonds, 1962)

Musa balbisiana × *Musa textilis* — Philippines (Simmonds, 1962; Carreel *et al.*, 2002)

Musa borneensis × *Musa textilis* — Borneo (Wong *et al.*, 2002; Häkkinen and Meekiong, 2005) — spontaneous (rather than natural), as *M. textilis* was introduced to Borneo and has naturalised

Musa boman × *Musa lolodensis* — Papua New Guinea (Argent, 1976; Nasution, 1993)

Musa flaviflora × *Musa velutina*, including introgression — Northeast India (Simmonds, 1962)

107. The great majority of domesticated bananas are products of an array of prehistoric crosses between diploid *Musa acuminata* plants of several subspecies (A genomes) and further crosses of such cultigens with the less diverse *Musa balbisiana* (B genome), which has resulted in several ploidy levels (diploids, triploids, a few tetraploids) and an array of varying progeny (*e.g.* Table 1). A spontaneous doubling of gamete chromosomes from n to $2n$ apparently sometimes facilitated such crossings (Ortiz, 1997b; Raboin *et al.*, 2005; Ssebuliba *et al.*, 2008). Experimental crosses in early cytogenetic studies also made hybrids between *M. acuminata* and *M. balbisiana*. Experimental interspecific crosses have been carried out between various species within section *Musa* (“*Eumusa*”), between *eumusa* species and species in other sections, and between non-*eumusa* species in the other sections (Dodds, 1943, 1945; Dodds and Pittendrigh, 1946; Dodds and Simmonds, 1946, 1948a, 1948b; Simmonds, 1962; Shepherd, 1999; Choy and Teoh, 2001).

108. Relatively little research on inheritance has been undertaken in *Musa* spp. due to the several characteristics of domesticated bananas and plantain that make inheritance analysis difficult. Since the first studies on inheritance of fruit parthenocarpy (Cheesman, 1932; Dodds, 1943, 1945), half a century passed to the next such study, on inheritance of whole-plant albinism (Ortiz and Vuylsteke, 1994a). Fortunately a number of studies followed (*cf.* Ortiz and Vuylsteke, 1996, 1998b; Ortiz, 2000), for example on inheritance of black Sigatoka resistance by the wild diploid Calcutta 4 (Ortiz and Vuylsteke, 1994b).

109. Some genetic maps have been developed that help to further understand the genetics of traits of interest. Fauré *et al.* (1993) developed the first map by using isozymes and RFLPs. A global programme for *Musa* improvement, PROMUSA, was formed in 1997. Research that includes a large consortium for genomics and genetic improvement of *Musa* is making available useful information for breeding (GMGC, 2002; Roux *et al.*, 2008). A genetic map developed through a joint effort characterised more than 300 markers (Lagoda *et al.*, 1998a). Another map was based on single sequence repeats (SSRs) (Lagoda *et al.*, 1996). CIRAD published 45 sequence-tagged microsatellite site (STMS) markers in the EMBL database (Lagoda *et al.*, 1998b). Fluorescent *in situ* hybridisation (FISH) has been used to determine the number and distribution of the 18S-25S and 5S rDNA sites on mitotic chromosomes of edible diploid bananas (Doleželová *et al.*, 1998). Bacterial artificial chromosome (BAC) libraries have been constructed of *Musa acuminata* composed of 55,152 clones (Vilarinhos *et al.*, 2003), and *Musa balbisiana* composed of 36,864

clones (Šafář *et al.*, 2004), as well as a BIBAC (binary BAC) library of a diploid *M. acuminata* cultivar (Ortiz-Vázquez *et al.*, 2005).

6.3. Experimental breeding

110. Breeding improvement for crops in which most of the accessions and the cultivated varieties are highly sterile is challenging. Most cultigens that are commercially acceptable are parthenocarpic triploids producing few seeds if any — and yet seedlessness is a characteristic that the breeder must retain in the crop (Hamill *et al.*, 1992). Experimental crossing of banana and plantain is hampered by polyploidy, the differences between their sets of subgenomes, and the plants being generally sterile, with seedless fruit. Banana improvement programmes rely on development of new hybrid genotypes obtained from the fertilisation of female-fertile plants with pollen of male-fertile plants. Even when viable hybrids can be obtained experimentally, most are sterile. In plantain some crosses have yielded a very few seeds, with great variability. Asexual *in vitro* multiplication and other biotechnological methods have been developed to obtain viable progeny (see Section VII).

6.4. Breeding schemes

111. Different breeding schemes are based on crosses between plants of different ploidy, from which improved tetraploids or triploids can be selected (Bakry *et al.*, 2001; Escalant *et al.*, 2002; Oselebe *et al.*, 2006). The breeding approach produces tetraploid progeny via crosses of triploid females and diploid males, choosing the female parents from the few triploids that show some female fertility. This strategy also includes producing secondary triploid hybrids from tetraploid × diploid crosses, achieved by hybridisation of African plantain landraces with wild or cultigen Asian diploid banana accessions (Vuylsteke *et al.*, 1993d). The key intermediate step is to obtain improved diploids with novel traits of interest.

112. Crossing to generate new hybrids has proven efficient in plantain improvement when genetic variability can be included through use of female-fertile parents (Ortiz, 1997c), but obtaining new commercial cultivars is difficult because most clones lack female fertility (Rosales and Pocasangre, 2002). Ortiz *et al.* (1998a) suggested optimising apparent male fertility by higher solar irradiation and temperature. Often the level of fertility of accessions available to a breeding programme still needs to be determined.

113. The different general breeding schemes of the major *Musa* research centres, and their main achievements, have been reviewed by Ortiz *et al.* (1995a) and Rosales and Pocasangre (2002). Modern breeding started with a banana improvement programme active from 1922 to 1980 in the Caribbean region (Trinidad and Jamaica). The programme's strategy was based on crosses between the triploid (AAA) cultivar 'Gros Michel' and its mutants with a range of resistant male diploid parents. The programme did not produce any commercially acceptable hybrid, but set the basis for future breeding strategies by using improved male diploids (Cheesman, 1948b; Simmonds, 1966/1973; Shepherd, 1974; Ortiz *et al.*, 1995a). In 1959 an intensive breeding programme was established in Honduras, initially supported by the United Fruit Company. The programme was later donated to the Fundación Hondureña de Investigación Agrícola (FHIA) which started its activities (with international support) in 1984. This research focused on developing a superior diploid population to be used for production of primary tetraploids. Selected accessions were crossed to 'Gros Michel' and its dwarf mutants to produce tetraploids combining specific resistances and good agronomic characteristics (Stover and Buddenhagen, 1986). In 1989 FHIA released the tetraploid (AAAB) FHIA-01 or 'Goldfinger', the first multi-resistant dessert hybrid that is grown commercially (Rowe and Rosales, 1993; Ortiz and Vuylsteke, 1996). Other variously broad improvement programmes are carried out in Brazil, Nigeria, Cameroon, Uganda, India and Australia and by the French centre CIRAD-FLHOR.

6.5. Targets and results

114. The main targets in breeding are resistance to major diseases and pests (Section IV) caused by (1) the Sigatoka complex (*Mycosphaerella* spp.) and the different races of the Fusarium wilt pathogen; (2) Moko disease; (3) viruses; (4) nematodes; and (5) the weevil borer. Among agronomic and quality traits of primary breeding attention are (1) yield; (2) fruit quality regarding finger shape, fruit tastes locally and for export, culinary traits, and ripening and shipping characteristics; and (3) traits such as dwarfism, toppling resistance, short ratoon cycles, regular suckering, and foliage and bunch peduncle strengths (Persley and De Langhe, 1987; Ortiz *et al.*, 1995a).

115. Sources of resistance to the Sigatoka leaf spot diseases are available in subspecies of *Musa acuminata* such as ssp. *malaccensis*, ssp. *burmannica* and ssp. *truncata* (Appendix 1) (Vuylsteke *et al.*, 1993c). Resistance to Fusarium wilt has been detected in *M. acuminata* ssp. *burmannica* and ssp. *malaccensis*, and the fertile diploid hybrid SH-3142 (Rowe and Rosales, 1989; Javed *et al.*, 2004). The AA diploid Pisang Jari Buaya group of accessions is resistant to the burrowing nematode, but the parent has given problems with sterility and inviability of seeds. Nonetheless the hybrid SH-3142 has such resistance and is being utilised in further development (Rowe and Rosales, 1989; Viaene *et al.*, 2003).

116. In spite of difficulty in breeding and the few commercially acceptable improved cultivars, significant advances are being made. Several tetraploid plantain hybrids with potential for use in disease-devastated areas of tropical Africa have been bred by the International Institute of Tropical Agriculture (IITA) (Vuylsteke *et al.*, 1993b). Ortiz *et al.* (1998b) developed triploid black Sigatoka-resistant banana and plantain germplasm (designated TM3x) by crosses between resistant diploids and triploids. Orjeda and Moore (2001) have reported on the performance of various cultivars resistant to *Fusarium*.

117. A selection of important hybrids obtained in several breeding programmes follows in Table 2.

Table 2. Some important *Musa* hybrids produced by agricultural breeding programmes

HYBRID NAME	PLOIDY	CHARACTERISTICS & COMMENTS	REFERENCE
DESSERT BANANAS:			
FHIA-18	tetraploid	black Sigatoka resistant Fusarium wilt resistant Grown in Latin America and Australia.	Rowe & Rosales, 1993
BITA 3	tetraploid	black Sigatoka resistant	Ortiz <i>et al.</i> , 1995b
FHIA-02	tetraploid	black Sigatoka resistant	Ortiz & Vuylsteke, 1996
IRFA 909	aneuploid	yellow and black Sigatoka resistant Fusarium wilt resistant	Ortiz & Vuylsteke, 1996
TM3x series	secondary triploids	black Sigatoka resistant	Ortiz <i>et al.</i> , 1998b
FHIA-17	tetraploid	Fusarium wilt race 1 resistant	Orjeda & Moore, 2001
Plantains:			
FHIA-01, Goldfinger	tetraploid	black Sigatoka resistant Fusarium wilt races 1 and 4 resistant Grown in Latin America and Australia.	Rowe & Rosales, 1993; Orjeda & Moore, 2001
TMPx series	tetraploids	black Sigatoka resistant	Vuylsteke <i>et al.</i> , 1993c
TMP2x series	diploids	black Sigatoka resistant	Vuylsteke & Ortiz, 1995
PITA-9	tetraploid	black Sigatoka resistant	Vuylsteke <i>et al.</i> , 1995
FHIA-21	tetraploid	black Sigatoka resistant	Ortiz & Vuylsteke, 1996
PITA-14	tetraploid	black Sigatoka resistant BSV tolerance	Ortiz & Vuylsteke, 1998a
TM3x series	secondary triploids	black Sigatoka resistant	Ortiz <i>et al.</i> , 1998b
PITA-15	secondary triploid	best fruit quality amongst TM3x series	Ortiz & Vuylsteke, 1998a
PITA-16	secondary triploid	BSV and CMV tolerant	Ortiz & Vuylsteke, 1998a
PITA-20	secondary triploid	higher yield	Ortiz & Vuylsteke, 1998a
COOKING BANANAS:			
TMBx series	tetraploids	black Sigatoka resistant	Vuylsteke <i>et al.</i> , 1993a
FHIA-03	tetraploid	black Sigatoka resistant Grown in Latin America.	Ortiz & Vuylsteke, 1996

SECTION VII. GENETIC IMPROVEMENT AND BIOTECHNOLOGY

118. Genetic improvement of *Musa* is difficult for a variety of reasons (Section VI) (Ortiz *et al.*, 1995a; Ortiz and Vuylsteke, 1996). Breeding is hampered because so few viable seeds and seedlings are obtained, but as well because up to 2 years are required in a seed-to-seed crop cycle. The different approaches to improve banana and plantain are mainly via crossing, mutation, somatic embryogenesis, somaclonal variation, and genetic engineering (genetic modification, genetic transformation). Colchicine and oryzalin are used to induce chromosome duplication as a step in *Musa* breeding schemes (Hamill *et al.*, 1992; Tezenas du Montcel *et al.*, 1994; Van Duren *et al.*, 1996; Ganga and Chezhiyan, 2002; Bakry *et al.*, 2007). Vegetative propagation techniques are widely used, because of the low levels particularly of female fertility, and the relative lack of useful genetic variability and the limited number of landraces and accessions selected from natural germplasm. Breeding schemes utilise *in vitro* culture extensively, and in some cases employ mutagenesis and genetic engineering.

7.1. Mutagenesis

119. The appearance of spontaneous mutants at a higher rate than in many other crops makes physical mutagenesis an attractive technique for banana and plantain improvement (Novak *et al.*, 1993; Domingues *et al.*, 1994; Roux, 2004; Kulkarni *et al.*, 2007). For example, with FAO/IAEA (International Atomic Energy Agency) co-operation, by irradiation researchers were able to obtain aluminium-tolerant mutants of the AAA banana cv. Nanicão (Matsumoto and Yamaguchi, 1990, 1991); early-flowering mutants GN-60 Gy/A (Novak *et al.*, 1990) and FATOM-1 (GN-60/A) (Tan *et al.*, 1993) from cv. Grande Naine; and improved agronomic characteristics of cv. Dwarf Parfitt, a Cavendish cultivar resistant to *Fusarium oxysporum* f. sp. *cubense* race 4 (Smith *et al.*, 1993; OGTR, 2008).

7.2. *In vitro* culture, somatic embryogenesis and somaclonal variation

120. *In vitro* culture of meristems, embryos, and cell suspensions has been used for micropropagation, including major *Musa* germplasm conservation (van den Houwe *et al.*, 2003) and exchange (Krikorian *et al.*, 1995). Micropropagation is extensively used for the commercial production of planting material.

121. Meristem culture of *Musa* began in 1959 (Baker, 1959; Baker and Steward, 1962), and much of the development work was accomplished in the 1980s. Micropropagation was achieved using several tissues: apical meristems (Álvarez *et al.*, 1982; Mante and Tepper, 1983; Tulmann Neto *et al.*, 1989), shoot tips (Ma and Shii, 1972; Cronauer Mitra and Krikorian, 1984b; Stover, 1987; Vuylsteke, 1989; Vuylsteke *et al.*, 1991; Bhagwat and Duncan, 1998), and floral explants (Balakrishnamurthy and Sree Rangaswamy, 1988; Cronauer Mitra and Krikorian, 1988; Dore Swamy and Sahijram, 1989).

122. Cronauer Mitra and Krikorian (1984a) first reported accomplishing somatic embryogenesis in *Musa*. Subsequently regeneration via somatic embryogenesis in diploid and triploid bananas has been reported by various researchers (*e.g.* Banerjee *et al.*, 1987), using for explants rhizome tissues (Novak *et al.*, 1989; Pasberg-Gauhl, 1995; Sannasgala *et al.*, 1995; Mendes *et al.*, 1996; Lee *et al.*, 1997); meristematic buds (Sales *et al.*, 2001); leaf bases (Novak *et al.*, 1989; Shchukin *et al.*, 1997; Conceição *et al.*, 1998); immature zygotic embryos (Escalant and Teisson, 1989); and young male flowers (Escalant *et*

al., 1994; Grapin *et al.*, 1996, 2000; Ganapathi *et al.*, 1999; Gómez Kosky *et al.*, 2002; Jalil *et al.*, 2003). Somatic embryogenesis is only successful in some cultivars, and has different varietal responses. Gómez Kosky *et al.* (2002) achieved 89% regeneration of plants from the AAAB cultivar FHIA-18.

110. Although somaclonal variation can be a problem in micropropagation (Sahijram *et al.*, 2003), some researchers have focused on using it as a source of genetic variability (Reuveni *et al.*, 1986; Stover, 1987; Israeli *et al.*, 1991) where not enough is otherwise available, as may be the case for Cavendish cultivars (Hwang *et al.*, 1996). For example, a dwarf somaclonal mutant of the Cavendish banana ‘Thai Chiao No. 1’ resistant to *Fusarium oxysporum* f. sp. *cubense* has been found (Tang and Hwang, 1998). The frequency of off-types from shoot-tip culture has varied from 0 to 70%, depending upon the originating genotype (Vuylsteke *et al.*, 1991).

111. Embryogenic cell suspension cultures can be obtained from a great variety of source materials, such as leaf sheaths or rhizome fragments of plants produced *in vitro* (Novak *et al.*, 1989); thin sections of a highly proliferating bud culture (Gómez Kosky *et al.*, 2002); immature zygotic embryos (Escalant and Teisson, 1993; Marroquin *et al.*, 1993); triploid somatic embryos (Escalant and Teisson, 1993); scalps (Dhed’a, 1992; Schoofs *et al.*, 1999); and male flower buds (Escalant *et al.*, 1994; Côte *et al.*, 1996) — which are the most responsive material. Plant regeneration in cell suspension cultures has been achieved in the cooking banana cv. Bluggoe (ABB group) (Dhed’a *et al.*, 1991) and in cv. Pisang Mas (AA group) (Jalil *et al.*, 2003).

112. As with other monocots, protoplast culture of banana has little success. Protoplasts can easily be isolated but callus formation has only been obtained when starting material was established under quite specific conditions (Novak *et al.*, 1989; Megia *et al.*, 1992, 1993; Panis *et al.*, 1993). Somatic hybridisation has been obtained through electrofusion of banana protoplasts (Matsumoto *et al.*, 2002b).

7.3. Genetic engineering

113. Direct genetic transformation (*i.e.* genetic engineering) of *Musa* is likely to have a major impact on banana and plantain improvement (Rout *et al.*, 2000; Escalant and Panis, 2002; Viljoen *et al.*, 2004). The first genetic modification by microprojectile bombardment was achieved using embryogenic cell suspensions from meristematic buds of the ABB cooking banana ‘Bluggoe’ (Sági *et al.*, 1995). The efficiency of one to four transgenic plants regenerated per bombardment plate made this technique practical (Dale, 1999). The first *Agrobacterium tumefaciens*-mediated transformation was achieved using meristems from tissue-cultured plants of the AAA Cavendish clone ‘Grande Naine’ (May *et al.*, 1995). Transformation by electroporation has been achieved using similarly obtained meristems from the AAB plantain ‘Harton’ (de García and Villarroel, 2002).

114. Thus plants in the three most economically important genomic groups have been genetically engineered, and by a variety of techniques. ‘Grande Naine’ has been stably transformed and regenerated via microprojectile bombardment of embryogenic suspension cells derived from immature male flowers (Becker *et al.*, 2000). Stable transformation and regeneration have been achieved in the cultivars ‘Williams’ (AAA), ‘Three Hand Planty’ and ‘Maçã’ (AAB), and ‘Bluggoe’ (ABB) (Remy *et al.*, 1998a, 1998b; Swennen *et al.*, 1998; Sági *et al.*, 2000; Matsumoto *et al.*, 2002a), and in the tetraploid cultivar FHIA-21 (AAAB) (Daniels *et al.*, 2002).

115. Research via genetic engineering of banana and plantain is focused on fungal, insect, nematode, and virus resistances. The three main strategies employ non-specific non-banana genes such as those encoding antimicrobial proteins (AMPs) (Broekaert *et al.*, 1995, 1997; Sági *et al.*, 1998; Remy *et al.*, 1999; Chakrabarti *et al.*, 2003; Pei *et al.*, 2005); systemic acquired resistance (Malek and Dietrich, 1999); and

specific resistance genes (R genes) (Hammond Kosack and Jones, 1997). Enhanced *in vitro* resistance in transgenic bananas to both Fusarium wilt and black Sigatoka has been reported (Remy *et al.*, 1998b).

116. In the case of nematodes, other strategies include use of anti-feeding proteins (Von Mende *et al.*, 1993) or other proteins that interfere in the nematode-plant interaction. A Cavendish banana has been transformed (using *Agrobacterium tumefaciens*) to express a bioengineered rice cystatin that confers resistance to the burrowing nematode (Atkinson *et al.*, 2004).

117. The major antiviral strategies are coat protein-mediated resistance (Dale *et al.*, 1993; Fauquet and Beachy, 1993) and RNA-mediated resistance. A large number of Cavendish and Bluggoe lines have been transformed with BBrMV-derived sequences designed to trigger RNA-mediated resistance (Dale, 1999). Banana streak viruses are a special case that may prove most difficult to control because BSV dsDNA has integrated into the *Musa* genome (see Section IV). The badnaviral sequences in the A genome are incomplete and have not caused infection, but the complete BSV genome has been found in the B genome — in fact four badnavirus species have been found as separate integrants (Geering *et al.*, 2005; Gayral *et al.*, 2008). *Musa balbisiana* (BB) harbouring integrated BSVs are still resistant, but when the haploid B subgenome occurs in an AAB triploid or AAAB tetraploid, stress can trigger BSV activation, infection and disease (Gayral *et al.*, 2008).

118. The present aim in *Musa* breeding is to develop a wide range of improved varieties, bringing together conventional breeding and biotechnology, including the rapidly developing genomics technologies (Crouch *et al.*, 1998; Dale, 1999; Rout *et al.*, 2000; Escalant and Panis, 2002; Escalant *et al.*, 2002; Heslop-Harrison and Schwarzacher, 2007). The development of molecular markers and marker-assisted selection methods is improving the efficiency of selection of improved cultivars. The Global *Musa* Genomics Consortium was created in 2001 to support such endeavours (GMGC, 2002; Frison *et al.*, 2004).

SECTION VIII. HUMAN HEALTH AND BIOSAFETY

119. People are the main consumers of banana and plantain fruits and derived products. The fruits are utilised in a multitude of ways in the human diet. They are also used in animal feed, and for starch and alcohol production. The plants can be a source of fertiliser, fibre, wrapping for food, plates and umbrellas, and for making clothes, shoes, furniture and paper (Morton, 1987; Sharrock, 1997). Bananas and plantains constitute a major food staple for many millions of people, and a main source of carbohydrates, vitamins and minerals. The vast majority of producers are small-scale farmers growing these diverse tropical crops either for home consumption, or local markets. Bananas and plantains are often the cheapest food to produce, as well as providing a valued source of income via local trade and international trade. Through increasing sales the plants sometimes become an important cash crop, in some cases providing the sole source of income for rural populations.

8.1. Medicinal and therapeutic value

120. Easy digestibility and good nutritional content make ripe banana an excellent food, particularly suitable for young children and the elderly. In the green stage, the liquified fruit is used in Brazil to treat dehydration in infants, as its tannins tend to protect the lining of the intestinal tract against further loss of liquids (Moreira, 1999). In general banana is appropriate for consumption when a low-fat, low-sodium and/or cholesterol-free diet is required, making banana recommended particularly for people with cardiovascular or kidney problems, arthritis, gout or gastrointestinal ulcers (Robinson, 1996).

121. As the fruit is easy to carry and peel, it is a quick healthy method of replenishing energy, due to its high energetic value of 75-115 kCal/100 mg of pulp (lower for banana, higher for plantain). Both bananas and plantains contain complex carbohydrates capable of replacing glycogen (*cf.* Nascimento *et al.*, 1999), and important vitamins (particularly B₆ and C) and minerals (potassium, calcium, magnesium, iron). Ripe fruit has been used to treat asthma and bronchitis and control diarrhoea. Boiled and mashed ripe fruit (especially mixed with other plant substances) is cited as a good remedy against constipation.

122. Many purported remedies are not well documented and would require further investigation (*cf.* Orhan, 2001). The banana pseudostem is cooked in India as the dish *khich khach*, taken monthly to prevent constipation (Gopinath, 1995). The juice extracted from the male bud is considered good for stomach problems. Fresh leaves have been used medicinally for a range of disorders from headaches to urinary tract infections, and stem juice was considered a remedy for gonorrhoea. The peel of ripe bananas has antiseptic properties and can be used to prepare a poultice for wounds or applied directly in an emergency (Frison and Sharrock, 1999).

123. Bananas are considered an ideal vehicle for edible vaccines as the dessert fruits are widely appealing, palatable and can be eaten raw (Mor *et al.*, 1998). There is extensive research aiming to express different vaccines in the fruit (*e.g.* Brown, 1996; Bapat *et al.*, 2000; Sala *et al.*, 2003; Arntzen *et al.*, 2004; Sunil Kumar *et al.*, 2005).

8.2. Allergenicity

124. Allergy to banana and plantain is increasingly identified, especially in some people adversely affected by latex, but as well in some people allergic to some tree or weed pollens (Magera *et al.*, 1997; Mikkola *et al.*, 1998; Grob *et al.*, 2002). Allergens are present in fresh fruit and refrigerated bananas, and in extracts — where the allergens may be concentrated (Magera *et al.*, 1997).

**APPENDIX 1. PROVISIONAL CLASSIFICATION OF THE WILD SPECIES OF *MUSA* L.
SECTION *MUSA***

Taxa (sections, species, subspecies, botanical varieties) (in some cases, a taxon's recognition or placement is tentative)	Natural distribution (approximate, incomplete) sometimes	References
◆ Section <i>Musa</i> (<i>Eumusa</i>) ($2n = 22$)		
<i>Musa acuminata</i> Colla ¹	Sri Lanka?, India to China, Indochina, Malesia (Malay Archipelago) and Northeast Australia	Cheesman, 1948b; De Langhe and Devreux, 1960; Nasution, 1991; Silva, 2000; Nasution and Yamada, 2001; Wong <i>et al.</i> , 2001a; Wattanachaiyingcharoen <i>et al.</i> , 2004
<i>M. acuminata</i> ssp. <i>burmannica</i> N.W. Simmonds • synonym <i>M. acuminata</i> ssp. <i>burmannicoides</i> De Langhe ²	India, Myanmar (formerly Burma), Thailand	De Langhe and Devreux, 1960; Horry and Jay, 1990; Shepherd, 1990; Carreel <i>et al.</i> , 1994, 2002; Ude <i>et al.</i> , 2002b; Uma and Buddenhagen, 2006
<i>M. acuminata</i> var. <i>chinensis</i> Häkkinen & H. Wang	China	Häkkinen and Wang, 2007; Häkkinen, 2008
<i>M. acuminata</i> ssp. <i>siamea</i> N.W. Simmonds •	China (Yunnan, Guangxi)?, Indochina, Thailand; Peninsular Malaysia?	Shepherd, 1990, 1999; Carreel <i>et al.</i> , 1994, 2002; De Langhe <i>et al.</i> , 2000; Asif Javed <i>et al.</i> , 2001b, 2002; Wong <i>et al.</i> , 2002
<i>M. acuminata</i> ssp. <i>malaccensis</i> (Ridley) N.W. Simmonds •	Thailand, Peninsular Malaysia (lowlands), Indonesia (Sumatra, Java)	Shepherd, 1990; Nasution, 1991; De Langhe <i>et al.</i> , 2000; Wong <i>et al.</i> , 2001a; Asif Javed <i>et al.</i> , 2002; Wattanachaiyingcharoen <i>et al.</i> , 2004
<i>M. acuminata</i> var. <i>flava</i> (Ridley) Nasution	Peninsular Malaysia, Borneo (Kalimantan)	Simmonds, 1956; Nasution, 1991; Asif Javed <i>et al.</i> , 2001b; Häkkinen & Väre, 2008c
<i>M. acuminata</i> ssp. <i>truncata</i> (Ridley) Kiew •	Peninsular Malaysia (highlands)	Shepherd, 1990; Asif Javed <i>et al.</i> , 2001a, 2001b, 2002; Häkkinen and De Langhe, 2001; Wong <i>et al.</i> , 2001a; Carreel <i>et al.</i> , 2002; Ude <i>et al.</i> , 2002b
<i>M. acuminata</i> var. <i>alasensis</i> Nasution	Indonesia (Sumatra)	Nasution, 1991
<i>M. acuminata</i> ssp. <i>halabanensis</i> (Meijer) M. Hotta	Indonesia (Sumatra)	Meijer, 1961; Nasution, 1991

<i>M. acuminata</i> var. <i>sumatrana</i> (Beccari ex André) Nasution	Indonesia (Sumatra)	Meijer, 1961; Nasution, 1991; Häkkinen & Väre, 2008c
<i>M. acuminata</i> var. <i>longepetiolata</i> Nasution	Indonesia (Sumatra)	Nasution, 1991
<i>M. acuminata</i> var. <i>bantamensis</i> Nasution	Indonesia (Java)	Nasution, 1991
<i>M. acuminata</i> var. <i>breviformis</i> Nasution	Indonesia (Java)	Nasution, 1991
<i>M. acuminata</i> ssp. <i>zebrina</i> (Van Houtte ex Planchon), comb. nov. ined.? • synonym <i>M. acuminata</i> var. <i>zebrina</i> (Van Houtte ex Planchon) Nasution	Indonesia (Java)	Horry and Jay, 1990; Nasution, 1991; Carreel <i>et al.</i> , 2002
<i>M. acuminata</i> var. <i>nakaii</i> Nasution	Indonesia (Java)	Nasution, 1991
<i>M. acuminata</i> var. <i>cerifera</i> (Backer) Nasution	Indonesia (Java)	Nasution, 1991
<i>M. acuminata</i> var. <i>rutilipes</i> (Backer) Nasution	Indonesia (Java, Bali)	Nasution, 1991; Häkkinen & Väre, 2008c
<i>M. acuminata</i> ssp. <i>microcarpa</i> (Beccari) N.W. Simmonds •	Borneo	Shepherd, 1990; Nasution, 1991; Häkkinen and De Langhe, 2001; Wong <i>et al.</i> , 2001a; Carreel <i>et al.</i> , 2002
<i>M. acuminata</i> ssp. <i>errans</i> (Blanco) R.V. Valmayor	Philippines	Shepherd, 1990; Valmayor, 2001; Carreel <i>et al.</i> , 2002; Valmayor <i>et al.</i> , 2004
<i>M. acuminata</i> var. <i>tomentosa</i> (Warburg ex K. Schumann) Nasution	Indonesia (Sulawesi)	Nasution, 1991; Häkkinen & Väre, 2008c
<i>M. acuminata</i> ssp. <i>acuminata</i>	Indonesia (Moluccas, New Guinea: Papua [formerly Irian Jaya])	Nasution, 1991
<i>M. acuminata</i> ssp. <i>banksii</i> (F. Mueller) N.W. Simmonds • synonym <i>M. banksii</i> F. Mueller	New Guinea, Australia (Queensland)	Argent, 1976; Ross, 1987; Shepherd, 1990; Tezenas du Montcel, 1990; Wong <i>et al.</i> , 2003; <i>cf.</i> Häkkinen & Väre, 2008c
<i>Musa balbisiana</i> Colla ³	Sri Lanka?, India, Nepal, Myanmar, Thailand, Indochina, China, Philippines	Argent, 1976; Sharrock, 1990; Silva, 2000; Sotto and Rabara, 2000; Wu and Kress, 2000; Ge <i>et al.</i> , 2005; Uma <i>et al.</i> , 2005, 2006b; Uma and Buddenhagen, 2006; Wang <i>et al.</i> , 2007; <i>cf.</i> Häkkinen & Väre, 2008c
<i>M. balbisiana</i> var. <i>andamanica</i> D.B. Singh, Sreekumar, T.V.R.S. Sharma & A.K. Bandyopadhyay	India (Andaman Islands)	Singh <i>et al.</i> , 1998; Uma and Buddenhagen, 2006
<i>M. balbisiana</i> var. <i>balbisiana</i>		
<i>Musa basjoo</i> Siebold ex linuma	China ⁴	Liu <i>et al.</i> , 2002b; Turner <i>et al.</i> , 2002; Häkkinen & Väre, 2008c
<i>Musa cheesmanii</i> N.W. Simmonds	India (Northeast); Nepal?	Simmonds, 1956; Häkkinen, 2008
<i>Musa formosana</i> (Warburg) Hayata synonym <i>M. basjoo</i> var. <i>formosana</i> (Warburg) S.S. Ying	Taiwan	Wu and Kress, 2000; Ying, 2000; Chiu <i>et al.</i> , 2004; <i>cf.</i> Häkkinen & Väre, 2008c
<i>Musa griersonii</i> Noltie	Bhutan	Noltie, 1994a, 1994b

<i>Musa itinerans</i> Cheesman — with 6+ varieties	India (Northeast), Myanmar, Thailand, Indochina, China	Wu and Kress, 2000; Liu <i>et al.</i> , 2002b; Valmayor <i>et al.</i> , 2005; Uma and Buddenhagen, 2006; Häkkinen <i>et al.</i> , 2008
<i>Musa nagensium</i> Prain	India (Northeast), Myanmar, China (Yunnan), Thailand	Liu <i>et al.</i> , 2002b; Uma and Buddenhagen, 2006; Häkkinen, 2008
<i>Musa ochracea</i> Shepherd	India (Northeast?)	Shepherd, 1999; Häkkinen & Väre, 2008c
<i>Musa schizocarpa</i> N.W. Simmonds	New Guinea	Argent, 1976; Tezenas du Montcel, 1990
<i>Musa sikkimensis</i> Kurz	India (Northeast), Bhutan; Myanmar, Thailand?	Simmonds, 1956; Noltie, 1994a; De Langhe <i>et al.</i> , 2000
<i>Musa thomsonii</i> (King ex Baker) A.M. Cowan & J.M. Cowan synonym <i>M. flaviflora</i> N.W. Simmonds	India (Northeast), Bhutan	Noltie, 1994a; Häkkinen and Wang, 2007; Häkkinen & Väre, 2008c
<i>Musa yunnanensis</i> Häkkinen & H. Wang	China (Yunnan)	Häkkinen and Wang, 2007; Häkkinen, 2008

¹No comprehensive, modern study of *Musa acuminata* taxonomic diversity in the wild has been done. The listed botanical subspecies and varieties thus do not represent different degrees of evolutionary divergence (as has been discerned for example in *M. maclayi* — see Appendix 2), but simply reflect the unintegrated recognition of biological entities (taxa) by different researchers. The most well-known and accepted subspecies (noted with the symbol •) have been studied more extensively, although primarily from a limited sample of germplasm accessions.

²*Musa acuminata* ssp. *burmannicoides*, which was presented by De Langhe and Devreux (1960), is not considered distinct from *M. acuminata* ssp. *burmannica* (Shepherd, 1990; Carreel *et al.*, 1994, 2002; Ude *et al.*, 2002b). The name is based on accession Calcutta 4 from the Calcutta Botanic Garden, and considered to be a wild-type plant of unknown provenance in India or Myanmar; this germplasm has been propagated and utilised extensively in breeding and research.

³Two additional botanical taxa have been recognised by Häkkinen & Väre (2008c): *Musa balbisiana* var. *brachycarpa* (Backer) Häkkinen (Indonesia: Java); *M. balbisiana* var. *liukuensis* (Matsumura) Häkkinen (Japan: Ryukyu Islands: Okinawa). The genuinely natural range of *M. balbisiana* is unclear.

⁴Erroneously considered native in Japan (Liu *et al.*, 2002b; *cf.* Turner *et al.*, 2002).

**APPENDIX 2. PROVISIONAL CLASSIFICATION OF THE WILD SPECIES OF *MUSA* L.
SECTIONS INGENTIMUSA, RHODOCHLAMYS, CALLIMUSA AND AUSTRALIMUSA, AS
WELL AS INCERTAE SEDIS (SECTION UNKNOWN)**

Taxa (sections, species, subspecies, botanical varieties) (in some cases, a taxon's recognition or placement is tentative)	Natural distribution (approximate, incomplete) sometimes	References
◆ Section <i>Ingentimusa</i> Argent ($2n = 14$)		Argent, 1976; Wong <i>et al.</i> , 2003
<i>Musa ingens</i> N.W. Simmonds ($2n = 14$)	Papua New Guinea	Argent, 1976
◆ Section <i>Rhodochlamys</i> Baker ($2n = 22$)		Häkkinen and Sharrock, 2002; Häkkinen, 2003b, 2005b, 2007; Uma <i>et al.</i> , 2006a; Häkkinen <i>et al.</i> , 2007c
<i>Musa aurantiaca</i> G. Mann ex Baker	India (Northeast), Myanmar, China (Tibet)	Uma <i>et al.</i> , 2006a; Häkkinen, 2007; Häkkinen & Väre, 2008a
<i>Musa chunii</i> Häkkinen	Myanmar, China (Yunnan)	Häkkinen, 2009
<i>Musa dasycarpa</i> Kurz synonym <i>M. velutina</i> H. Wendland & Drude	India (Northeast), Myanmar	Uma <i>et al.</i> , 2006a; Häkkinen, 2007; Häkkinen & Väre, 2008b
<i>Musa laterita</i> Cheesman	India (Northeast), Myanmar, Thailand	Häkkinen, 2001, 2003b, 2007; Uma <i>et al.</i> , 2006a
<i>Musa mannii</i> H. Wendland ex Baker	India (Assam)	Häkkinen, 2007
<i>Musa ornata</i> Roxburgh synonym <i>M. rosacea</i> Hort., non Jacquin	India, Bangladesh; Myanmar?	Sundararaj and Balasubramanyam, 1971; Argent, 1984; Alquini, 1987, 1988; Hore <i>et al.</i> , 1992; Uma and Buddenhagen, 2006; Uma <i>et al.</i> , 2006a; Häkkinen, 2007
<i>Musa rosea</i> Baker synonym <i>M. angcorensis</i> Gagnepain	Cambodia, Vietnam	Häkkinen, 2006c, 2007
<i>Musa rubra</i> Wallich ex Kurz	India (Mizoram), Myanmar	Häkkinen, 2003b, 2007, 2008
<i>Musa sanguinea</i> Hooker f.	India (Northeast), China (Yunnan)	Liu <i>et al.</i> , 2002b; Uma <i>et al.</i> , 2006a; Häkkinen, 2007
<i>Musa siamensis</i> Häkkinen & R.H. Wallace	Thailand, Cambodia	Häkkinen, 2007; Häkkinen & Wallace, 2007; Häkkinen <i>et al.</i> , 2007c
<i>Musa zaifui</i> Häkkinen & H. Wang	China (Yunnan)	Häkkinen and Wang, 2008

◆ Section <i>Callimusa</i> Cheesman (usually $2n = 20$)		Wong <i>et al.</i> , 2002; Häkkinen, 2004b; Häkkinen <i>et al.</i> , 2007b
<i>Musa azizii</i> Häkkinen	Borneo (East Malaysia)	Häkkinen, 2005a
<i>Musa barioensis</i> Häkkinen	Borneo (East Malaysia)	Häkkinen, 2006a
<i>Musa bauensis</i> Häkkinen & Meekiong	Borneo (East Malaysia)	Häkkinen and Meekiong, 2004
<i>Musa beccarii</i> N.W. Simmonds ($2n = 18$) — with 2 varieties	Borneo (East Malaysia)	Wong <i>et al.</i> , 2001b; Häkkinen, 2004b; Häkkinen <i>et al.</i> , 2005, 2007a, 2007b
<i>Musa borneensis</i> Beccari — with 6 varieties includes <i>M. flavida</i> M. Hotta	Borneo (East Malaysia, Brunei, Kalimantan)	Häkkinen and Meekiong, 2005
<i>Musa campestris</i> Beccari — with ca. 6 varieties	Borneo (East Malaysia, Brunei, Kalimantan)	Häkkinen, 2003a, 2004a, 2004c
<i>Musa coccinea</i> Andrews synonym <i>M. uranoscopos</i> sensu Loureiro, non Rumphius ?	China, Indochina	Wu and Kress, 2000; Argent and Kiew, 2002; Liu <i>et al.</i> , 2002b; Häkkinen & Väre, 2008c
<i>Musa exotica</i> R.V. Valmayor	Vietnam	Danh <i>et al.</i> , 1998; Valmayor, 2001; Valmayor <i>et al.</i> , 2004
<i>Musa gracilis</i> Holtum ex Cheesman	Peninsular Malaysia	Kiew, 1987
<i>Musa hirta</i> Beccari	Borneo (East Malaysia)	Häkkinen, 2004b
<i>Musa lawitiensis</i> Nasution & Supardiyono — with 4 varieties includes <i>M. suratii</i> Argent	Borneo (East Malaysia, Brunei, Kalimantan)	Wong <i>et al.</i> , 2001b; Häkkinen, 2006b
<i>Musa lokok</i> Geri & Ng	Borneo (East Malaysia)	Geri and Ng, 2005
<i>Musa monticola</i> M. Hotta ex Argent	Borneo (East Malaysia)	Wong <i>et al.</i> , 2001b
<i>Musa muluensis</i> M. Hotta	Borneo (East Malaysia)	Häkkinen, 2004b
<i>Musa paracoccinea</i> A.Z. Liu & D.Z. Li	China, Vietnam	Liu <i>et al.</i> , 2002b
<i>Musa pigmaea</i> M. Hotta, nom. nud.	Borneo (East Malaysia, Kalimantan)	Häkkinen, 2004b; Häkkinen <i>et al.</i> , 2005
<i>Musa salaccensis</i> Zollinger, nom. nud.	Indonesia (Sumatra, Java)	Meijer, 1961; Nasution, 1993; Häkkinen & Väre, 2008c
<i>Musa splendida</i> A. Chevalier	Vietnam	Valmayor <i>et al.</i> , 2004
<i>Musa tuberculata</i> M. Hotta	Borneo (Brunei)	Häkkinen, 2004b
<i>Musa violascens</i> Ridley	Peninsular Malaysia	Kiew, 1987
<i>Musa voonii</i> Häkkinen	Borneo (East Malaysia)	Häkkinen, 2004b
◆ Section <i>Australimusa</i> Cheesman ($2n = 20$)		Sharrock, 2001; Wong <i>et al.</i> , 2002, 2003
<i>Musa alinsanaya</i> R.V. Valmayor	Philippines	Valmayor, 2001; Valmayor <i>et al.</i> , 2004
<i>Musa angustigemma</i> N.W. Simmonds synonym <i>M. peekelii</i> ssp. <i>angustigemma</i> (N.W. Simmonds) Argent	Papua New Guinea	Jarret <i>et al.</i> , 1992
<i>Musa boman</i> Argent	Papua New Guinea	Argent, 1976
<i>Musa bukensis</i> Argent	Papua New Guinea	Argent, 1976
<i>Musa fitzalanii</i> F. Mueller	Australia (Queensland)	Ross, 1987

<i>Musa insularimontana</i> Hayata	Taiwan	Wu and Kress, 2000; Ying, 2000; Chiu <i>et al.</i> , 2007
<i>Musa jackeyi</i> W. Hill	Australia (Queensland)	Ross, 1987
<i>Musa johnsii</i> Argent	Indonesia (New Guinea: Papua [formerly Irian Jaya])	
<i>Musa lolodensis</i> Cheesman	Indonesia (Moluccas), New Guinea	Argent, 1976; Nasution, 1993
<i>Musa maclayi</i> F. Mueller ex Miklouho-Maclay	Papua New Guinea	Argent, 1976
<i>M. maclayi</i> ssp. <i>ailuluai</i> Argent		
<i>M. maclayi</i> ssp. <i>maclayi</i>		
<i>M. maclayi</i> ssp. <i>maclayi</i> var. <i>erecta</i> (N.W. Simmonds) Argent		
<i>M. maclayi</i> ssp. <i>maclayi</i> var. <i>maclayi</i>		
<i>M. maclayi</i> ssp. <i>maclayi</i> var. <i>namatani</i> Argent		
<i>Musa peekelii</i> Lauterbach	Papua New Guinea	Argent, 1976
<i>Musa textilis</i> Née	Philippines	Valmayor <i>et al.</i> , 2002
♦ <i>Incertae sedis</i>		
<i>Musa lutea</i> R.V. Valmayor, L.D. Danh & Häkkinen	Vietnam	Valmayor <i>et al.</i> , 2004
<i>Musa sakaiana</i> Meekiong, Ipor & Tawan	Borneo (East Malaysia)	Meekiong <i>et al.</i> , 2006
<i>Musa tonkinensis</i> R.V. Valmayor, L.D. Danh & Häkkinen	Vietnam	Valmayor <i>et al.</i> , 2005
<i>Musa viridis</i> R.V. Valmayor, L.D. Danh & Häkkinen	Vietnam	Valmayor <i>et al.</i> , 2004

REFERENCES

- Abera-Kalibata, A.M., C.S. Gold, R.G. Van Driesche and P.E. Ragama. 2007. Composition, distribution, and relative abundance of ants in banana farming systems in Uganda. *Biological Control* 40: 168-178.
- Achard, R., E. Malézieux, P. Robin and J. Ganry. 2004. Role and status of plantain in agroforestry cropping systems in South West Cameroon: Which pathways to productive and sustainable systems? *Acta Horticulturae* 638: 101-108.
- Agindotan, B., S. Winter, D. Lesemann, A. Uwaifo, J. Mignouna, J. Hughes and G. Thottappilly. 2006. Diversity of banana streak-inducing viruses in Nigeria and Ghana: Twice as many sources detected by immunoelectron microscopy (IEM) than by TAS-ELISA or IC-PCR. *African Journal of Biotechnology* 5: 1194-1203.
- Allen, R.N., E.B. Dettmann, G.G. Johns and D.W. Turner. 1988. Estimation of leaf emergence rates of bananas. *Australian Journal of Agricultural Research* 39: 53-62.
- Alquini, Y. 1987. Interpretação morfológica de *Musa rosacea* Jacq. (Musaceae) fases antomática, gamomática e carpomática. *Acta Biológica Paranaense* 16: 31-66.
- Alquini, Y. 1988. Interpretação morfológica de *Musa rosacea* Jacq. (Musaceae): Fase teleomática, 1. *Acta Botanica Brasilica* 1: 125-142.
- Álvarez, I.C., L.A. Jaramillo and D. Manzur Macías. 1982. Cultivo *in vitro* de apices meristemáticos de plátano. *Informe Mensual UPEB (Panama)* Año 6 (No. 53): 42-45.
- Argent, C.G.C. 1976. The wild bananas of Papua New Guinea. *Notes from the Royal Botanic Garden, Edinburgh* 35: 77-114.
- Argent, G. 1984. Musaceae. Pp. 117-119 in *The European Garden Flora, Volume 2, Monocotyledons, Part 2* (S.M. Walters, A. Brady, C.D. Brickell, J. Cullen, P.S. Green, J. Lewis, V.A. Matthews, D.A. Webb, P.F. Yeo and J.C.M. Alexander, eds.). Cambridge University Press, Cambridge, UK.
- Argent, G., and R. Kiew. 2002. *Musa coccinea*. *The Plantsman*, new series 1(2): 103-105.
- Arnaud, E., and J.-P. Horry, eds. 1997. *Musalogue: A Catalogue of Musa Germplasm. Papua New Guinea Collecting Missions, 1988-1989*. INIBAP, Montpellier, France. 127 pp.
- Arntzen, C., H. Mason, R. Mahoney and D. Kirk. 2004. Oral vaccines derived from transgenic plants. Pp. 256-262 in C. de Quadros, ed., *Vaccines: Preventing Disease and Protecting Health*. Scientific Publication No. 596, Pan American Health Organization, Washington, D.C.
- Asif Javed, M., C. Mak and R.Y. Othman. 2001a. Characterization of indigenous *Musa* species based on flow cytometric analysis of ploidy and nuclear DNA content. *Caryologia* 54: 161-168.

- Asif Javed, M., C. Mak and R.Y. Othman. 2001b. Characterization of Malaysian wild bananas based on anthocyanins. *Biotropia* 16: 28-38.
- Asif Javed, M., C. Mak and R.Y. Othman. 2002. Morphological characterization of Malaysian wild banana *Musa acuminata*. *Biotropia* 18: 21-37.
- Atkinson, H.J., S. Grimwood, K. Johnston and J. Green. 2004. Prototype demonstration of transgenic resistance to the nematode *Radopholus similis* conferred on banana by a cystatin. *Transgenic Research* 13: 135-142.
- Aubert, B. 1971. Action du climate sur le comportement du bananier en zones tropicales et subtropicales. *Fruits (France)* 26: 175-188.
- Baker, W.G. 1959. A system for maximum multiplication of the banana plant. *Tropical Agriculture (Trinidad and Tobago)* 36: 275-284.
- Baker, W.G., and F.C. Steward. 1962. Growth and development of the banana plant. I. The growing regions of the vegetative shoot. *Annals of Botany* 26: 389-411.
- Bakry, F., F. Carreel, M.-L. Caruana, F.-X. Côte, C. Jenny and H. Tezenas du Montcel. 2001. Banana. Pp. 1-29 in A. Charrier, M. Jacquot, S. Hamon and D. Nicolas, eds., *Tropical Plant Breeding*. CIRAD, Montpellier, France, and Science Publishers, Enfield, New Hampshire, USA.
- Bakry, F., N. Paulo de la Reberdiere, S. Pichot and C. Jenny. 2007. In liquid medium colchicine treatment induces non-chimerical doubled-diploids in a wide range of mono- and interspecific diploid banana clones. *Fruits* 62: 3-12.
- Balakrishnamurthy, G., and S.R. Sree Rangaswamy. 1988. Regeneration of banana plantlet from *in vitro* culture of floral apices. *Current Science (Bangalore)* 57: 270-272.
- Ball, T., L. Vrydaghs, I. van den Hauwe [sic], J. Manwaring and E. De Langhe. 2006. Differentiating banana phytoliths: Wild and edible *Musa acuminata* and *Musa balbisiana*. *Journal of Archaeological Science* 33: 1228-1236.
- Banerjee, N., J. Schoofs, S. Hollevoet, F. Dumortier and E. De Langhe. 1987. Aspects and prospects of somatic embryogenesis in *Musa*, ABB, cv. Bluggoe. Symposium on In Vitro Problems Related to Mass Propagation of Horticultural Plants, Gembloux, Belgium. *Acta Horticulturae* 212: 727-730.
- Bapat, V.A., P.S. Suprasanna, T.R. Ganapathi and P.S. Rao. 2000. *In vitro* production of L-dopa in tissue cultures of banana. *Pharmaceutical Biology* 38: 271-273.
- Bartoš, J., O. Alkhimova, M. Doleželová, E. De Langhe and J. Doležel. 2005. Nuclear genome size and genomic distribution of ribosomal DNA in *Musa* and *Ensete* (Musaceae): Taxonomic implications. *Cytogenetic and Genome Research* 109: 50-57.
- Becker, D.K., B. Dugdale, M.K. Smith, R.M. Harding and J.L. Dale. 2000. Genetic transformation of Cavendish banana (*Musa* spp. AAA group) cv. Grand Nain via microprojectile bombardment. *Plant Cell Reports* 19: 229-234.
- Belalcázar, S., C.A. Salazar, G. Cayón, J.E. Lozada, L.E. Castillo and J.A. Valencia. 1991. Manejo de plantaciones. Pp. 147-239 in S. Belalcázar, J.C. Toro and R. Jaramillo, eds., *El Cultivo del*

Plátano en el Trópico. Manual de Asistencia Técnica No. 50. INIBAP, CIID, ICA, Federación Nacional de Cafeteros de Colombia. Impresora Feriva Ltda., Cali, Colombia.

- Belalcázar-C., S., F.E. Rosales and L.E. Pocasangre. 2005. Development and formation of plantain roots (*Musa* AAB Simmonds). Pp. 75-82 in *Banana Root System: Towards a Better Understanding for its Productive Management. Proceedings of an International Symposium Held in San José, Costa Rica, 3-5 November 2003* (D.W. Turner and F.E. Rosales, eds.). INIBAP, Montpellier, France.
- Bhagwat, B., and E.J. Duncan. 1998. Mutation breeding of Highgate (*Musa acuminata*, AAA) for tolerance to *Fusarium oxysporum* f. sp. *cubense* using gamma irradiation. *Euphytica* 101: 143-150.
- Bhat, K.V., and R.L. Jarret. 1995. Random amplified polymorphic DNA and genetic diversity in Indian *Musa* germplasm. *Genetic Resources and Crop Evolution* 42: 107-118.
- Bhat, K.V., S.R. Bhat and K.P.S. Chandel. 1992a. Survey of isozyme polymorphism for clonal identification in *Musa*. I. Esterase, acid phosphatase and catalase. *Journal of Horticultural Science* 67: 501-507.
- Bhat, K.V., S.R. Bhat and K.P.S. Chandel. 1992b. Survey of isozyme polymorphism for clonal identification in *Musa*. II. Peroxidase, superoxide dismutase, shikimate dehydrogenase and malate dehydrogenase. *Journal of Horticultural Science* 67: 737-743.
- Bhat, K.V., R.L. Jarret and Z.W. Liu. 1994. RFLP characterization of Indian *Musa* germplasm for clonal identification and classification. *Euphytica* 80: 95-103.
- Bhat, K.V., R.L. Jarret and R. Singh Rana. 1995. DNA profiling of banana and plantain cultivars using random amplified polymorphic DNA (RAPD) and restriction fragment length polymorphism (RFLP) markers. *Electrophoresis* 16: 1736-1745.
- Bird, M.I., D. Taylor and C. Hunt. 2005. Palaeoenvironments of insular Southeast Asia during the Last Glacial Period: A savanna corridor in Sundaland? *Quaternary Science Reviews* 24: 2228-2242.
- Biruma, M., M. Pillay, L. Tripathi, G. Blomme, S. Abele, M. Mwangi, R. Bandyopadhyay, P. Muchunguzi, S. Kassim, M. Nyine, L. Turyagyenda and S. Eden-Green. 2007. Banana *Xanthomonas* wilt: A review of the disease, management strategies and future research directions. *African Journal of Biotechnology* 6: 953-962.
- Blomme, G., X. Draye, G. Rufyikiri, S. Declerck, D. De Waele, A. Tenkouano and R. Swennen. 2000. Progress in understanding the roots of *Musa* spp. Pp. 14-19 in *Networking Banana and Plantain: INIBAP Annual Report 1999*. INIBAP, Montpellier, France.
- Bonaccorso, F.J., J.R. Winkelmann and D.G.P. Byrnes. 2005. Home range, territoriality, and flight time budgets in the black-bellied fruit bat, *Melonycteris melanops* (Pteropodidae). *Journal of Mammalogy* 86: 931-936.
- Bridge, J., R. Fogain and P. Speijer. 1997. The Root Lesion Nematodes of Banana. *Musa* Pest Fact Sheet No. 2. INIBAP, Montpellier, France. 4 pp.
- Broekaert, W.F., F.R.G. Terras, B.P.A. Cammue and R.W. Osborn. 1995. Plant defensins: Novel antimicrobial peptides as components of the host defense system. *Plant Physiology* 108: 1353-1358.

- Broekaert, W.F., B.P.A. Cammue, M.F.C. De Bolle, K. Thevissen, G.W. De Samblanx and R.W. Osborn. 1997. Antimicrobial peptides from plants. *Critical Reviews in Plant Sciences* 16: 297-323.
- Brown, K. 1996. Vaccine cuisine. *Environmental Health Perspectives* 104: 276-278.
- Buhariwalla, H.K., R.L. Jarret, B. Jayashree, J.H. Crouch and R. Ortiz. 2005. Isolation and characterization of microsatellite markers from *Musa balbisiana*. *Molecular Ecology Notes* 5: 327-330.
- Carlier, J., M.-F. Zapater, F. Lapeyre, D.R. Jones and X. Mourichon. 2000. Septoria leaf spot of banana: A newly discovered disease caused by *Mycosphaerella eumusae* (anamorph *Septoria eumusae*). *Phytopathology* 90: 884-890.
- Carreel, F., S. Fauré, J.-P. Horry, J.-L. Noyer and D. González de León. 1993. Application des RFLPs au genre *Musa*: Étude préliminaire de la diversité génétique [Application of RFLPs to *Musa* spp.: A preliminary study of genetic diversity]. In Amélioration génétique des bananiers et plantains pour la résistance aux maladies et ravageurs / Breeding Banana and Plantain for Resistance to Diseases and Pests, Montpellier, France (J. Ganry, ed.). CIRAD-FLHOR and INIBAP, Montpellier, France.
- Carreel, F., S. Fauré, D. González de León, P.J.L. Lagoda, X. Perrier, F. Bakry, H. Tezenas du Montcel, C. Lanaud and J.-P. Horry. 1994. Évaluation de la diversité génétique chez les bananiers diploïdes (*Musa* spp.). *Genetics Selection Evolution* 26 (Suppl. 1): 125s-136s.
- Carreel, F., D. González de León, P. Lagoda, C. Lanaud, C. Jenny, J.-P. Horry and H. Tezenas du Montcel. 2002. Ascertaining maternal and paternal lineage within *Musa* by chloroplast and mitochondrial DNA RFLP analyses. *Genome* 45: 679-692.
- Chakrabarti, A., T.R. Ganapathi, P.K. Mukherjee and V.A. Bapat. 2003. MSI-99, a magainin analogue, imparts enhanced disease resistance in transgenic tobacco and banana. *Planta* 216: 587-596.
- Champion, J. 1963/1968. Le Bananier. Maisonneuve et Larose, Paris. 263 pp. / El Plátano. Editorial Blume, Barcelona. 247 pp.
- Charles, J.S.K., M.J. Thomas, R. Menon, T. Premalatha and S.J. Pillai. 1996. Field susceptibility of banana to pseudostem borer *Odoiporus longicollis* Oliver. Page 32 in Symposium on Technological Advancement in Banana/Plantain Production and Processing (N.K. Nayar and T.E. George, eds.). Kerala Agricultural University, Mannuthy, India.
- Cheesman, E.E. 1932. Genetic and cytological studies of *Musa*. I. Certain hybrids of the Gros Michel banana. *Journal of Genetics* 26: 291-312.
- Cheesman, E.E. 1947. Classification of the bananas. II. The genus *Musa* L. *Kew Bulletin* 2: 106-117.
- Cheesman, E.E. 1948a. Classification of the bananas. III. Critical notes on species. a. *Musa balbisiana* Colla. *Kew Bulletin* 3: 11-17.
- Cheesman, E.E. 1948b. Classification of the bananas. III. Critical notes on species. b. *Musa acuminata* Colla. *Kew Bulletin* 3: 17-28.
- Chiu, H.-L., C.-T. Shii, T.-L. Chang, S.-W. Lee and M.-J. Fan. 2004. Morphological characterization of *Musa formosana*. *Journal of Agricultural Research of China* 53: 207-216. (in Chinese)

- Chiu, H.-L., S.-I. Lee, C.-L. Yeh, C.-T. Shii and C.-R. Yeh. 2007. *Musa balbisiana* L.A. Colla, a newly naturalized wild banana in Taiwan. *Journal of Taiwan Agricultural Research* 56: 215-223. (in Chinese)
- Choy, M.-K., and S.-B. Teoh. 2001. Mitotic instability in two wild species of bananas (*Musa acuminata* and *M. balbisiana*) and their common cultivars in Malaysia. *Caryologia* 54: 261-266.
- Conceição, A.D., K. Matsumoto, F. Bakry and R.B. Bernd-Souza. 1998. Plant regeneration from long-term callus culture of AAA-group dessert banana. *Pesquisa Agropecuária Brasileira* 33: 1291-1296.
- Côte, F.X., R. Domergue, S. Monmarson, J. Schwendiman, C. Teisson and J.-V. Escalant. 1996. Embryogenic cell suspensions from the male flower of *Musa* AAA cv. Grand Nain. *Physiologia Plantarum* 97: 285-290.
- Creste, S., A. Tulmann Neto, R. Vencovsky, S.O. Silva and A. Figueira. 2004. Genetic diversity of *Musa* diploid and triploid accessions from the Brazilian banana breeding program estimated by microsatellite markers. *Genetic Resources and Crop Evolution* 51: 723-733.
- Cronauer Mitra, S.S., and A.D. Krikorian. 1984a. Multiplication of *Musa* from excised stem tips. *Annals of Botany* 53: 321-328.
- Cronauer Mitra, S.S., and A.D. Krikorian. 1984b. Rapid multiplication of bananas and plantains by *in vitro* shoot-tip culture. *HortScience* 19: 234-235.
- Cronauer Mitra, S.S., and A.D. Krikorian. 1988. Determinate floral buds of plantain (*Musa* AAB) as a site of adventitious shoot formation. *Annals of Botany* 61: 507-512.
- Crouch, J.H., D. Vuylsteke and R. Ortiz. 1998. Perspectives on the application of biotechnology to assist the genetic enhancement of plantain and banana (*Musa* spp.). *Electronic Journal of Biotechnology* 1: 11-22.
- Crous, P.W., and X. Mourichon. 2002. *Mycosphaerella eumusae* and its anamorph *Pseudocercospora eumusae* spp. nov: Causal agent of Eumusae leaf spot disease of banana. *Sydowia* 54: 35-43.
- Dale, J.L. 1999. Banana biotechnology: Already a reality. *AgBiotechNet* 1(Nov.): ABN 033 (9 pp.).
- Dale, J., T. Burns, S. Oehlschlager, M. Karan and R. Harding. 1993. Banana bunchy top virus: Prospects for control through biotechnology. Pp. 85-92 in Proceedings of the Workshop on Biotechnology Applications for Banana and Plantain Improvement, San José, Costa Rica. INIBAP, Montpellier, France.
- Damasco, O.P., G.C. Graham, R.J. Henry, S.W. Adkins, M.K. Smith and I.D. Godwin. 1996. Random amplified polymorphic DNA (RAPD) detection of dwarf off-types in micropropagated Cavendish (*Musa* spp. AAA) bananas. *Plant Cell Reports* 16: 118-123.
- Danh, L.D., H.H. Nhi and R.V. Valmayor. 1998. Banana collection, characterization and conservation in Vietnam. *InfoMusa* 7(1): 10-13.
- Daniells, J., C. Jenny, D. Karamura and K. Tomekpé. 2001. International classification. Pp. ix-xi in E. Arnaud and S. Sharrock, eds., *Musalogue: A Catalogue of Musa Germplasm. Diversity in the Genus Musa*. INIBAP, Montpellier, France.

- Daniels, D., R. Gómez Kosky, B. Chong, L. Mas, I. Bermúdez, B. Ocaña Díaz, M. Reyes Vega and C. Pereira Marín. 2002. Expresión transitoria de la β -glucuronidasa en suspensiones celulares del cultivar híbrido de plátano FHIA-21 (AAAB) / Transient expression of β -glucuronidase in cell suspensions from the hybrid plantain cultivar FHIA-21 (AAAB). *Biotecnología Vegetal* 2: 119-122.
- de Beer, Z., J.M. Hernández and S. Sabadel. 2001. False Panama Disorder on Banana. *Musa Disease Factsheet No. 9*. INIBAP, Montpellier, France. 4 pp.
- de García, E., and C. Villarroel. 2002. Transformación de plantas de plátano cv. Hartón (AAB) mediante electroporación de meristemas [Transformation of plantain cv. Harton (AAB) by electroporation of shoot apex explants]. Pp. 86-89 in XV Reunión Internacional ACORBAT 2002, Cartagena de Indias, Colombia: Memorias, Proceedings, Mémoires. Asociación de Bananeros de Colombia AUGURA, Medellín, Colombia.
- De Langhe, E. 1996. Banana and plantain: The earliest fruit crops? Pp. 6-8 in Networking Banana and Plantain: INIBAP Annual Report 1995. INIBAP, Montpellier, France.
- De Langhe, E. 2000a. Banana Diversity in the Middle East (Jordan, Egypt, Oman). INIBAP, Montpellier, France. 56 pp.
- De Langhe, E. 2000b. Diversity in the genus *Musa*: Its significance and its potential. Proceedings of the First International Conference on Banana and Plantain for Africa, Kampala, Uganda, 14-18 October 1996. *Acta Horticulturae* 540: 81-88.
- De Langhe, E., and P. de Maret. 1999. Tracking the banana: Its significance in early agriculture. Pp. 377-396 in C. Gosden and J. Hather, eds., *The Prehistory of Food: Appetites for Change*. Routledge, London, UK.
- De Langhe, E., and M. Devreux. 1960. Une sous-espèce nouvelle de *Musa acuminata* Colla. *Bulletin du Jardin Botanique de l'État a Bruxelles* 30: 375-388.
- De Langhe, E.A.L., R. Swennen and D. Vuylsteke. 1996. Plantain in the early Bantu world. *Azania* 29-30: 147-160.
- De Langhe, E., D. Wattanachaiyingcharoen, H. Volkaert and S. Piyapitchard. 2000. Biodiversity of wild Musaceae in northern Thailand. Pp. 71-82 in *Advancing Banana and Plantain R & D in Asia and the Pacific*. Proceedings of the 9th INIBAP-ASPNET Regional Advisory Committee Meeting, South China Agricultural University, Guangzhou, China, 2-5 November 1999 (A.B. Molina and V.N. Roa, eds.). INIBAP-ASPNET, Los Baños, Philippines.
- De Langhe, E., M. Pillay, A. Tenkouano and R. Swennen. 2005. Integrating morphological and molecular taxonomy in *Musa*: The African plantains (*Musa* spp. AAB group). *Plant Systematics and Evolution* 255: 225-236.
- De Waele, D., and R.G. Davide. 1998. The Root-Knot Nematodes of Banana. *Musa Pest Factsheet No. 3*. INIBAP, Montpellier, France. 4 pp.
- Deacon, J.W., J.A. Herbert and J. Dames. 1985. False Panama disorder of bananas. *ITSC Information Bulletin* 149: 15-18.
- Denham, T. 2005. Envisaging early agriculture in the highlands of New Guinea: Landscapes, plants and practices. *World Archaeology* 37: 290-306.

- Denham, T.P., S.G. Haberle, C. Lentfer, R. Fullagar, J. Field, M. Therin, N. Porsch and B. Winsborough. 2003. Origins of agriculture at Kuk Swamp in the highlands of New Guinea. *Science* 301: 189-193.
- Denham, T., S. Haberle and C. Lentfer. 2004. New evidence and revised interpretations of early agriculture in Highland New Guinea. *Antiquity* 78: 839-857.
- Dhed'a, D. 1992. Culture de suspensions cellulaires embryogéniques et régénération en plantules par embryogénèse somatique chez le bananier et le bananier plantain (*Musa* spp.). *Tropicicultura* 10: 152-154.
- Dhed'a, D., F. Dumortier, B. Panis, D. Vuylsteke and E. De Langhe. 1991. Plant regeneration in cell suspension cultures of the cooking banana cv. Bluggoe (*Musa* spp. ABB group). *Fruits (France)* 46: 125-135.
- D'Hont, A., A. Paget-Goy, J. Escoute and F. Carreel. 2000. The interspecific genome structure of cultivated banana, *Musa* spp. revealed by genomic DNA *in situ* hybridization. *Theoretical and Applied Genetics* 100: 177-183.
- Dochez, C., J. Dusabe, J. Whyte, A. Tenkouano, R. Ortiz and D. De Waele. 2006. New sources of resistance to *Radopholus similis* in *Musa* germplasm from Asia. *Australasian Plant Pathology* 35: 481-485.
- Dodds, K.S. 1943. Genetical and cytological studies of *Musa*. V. Certain edible diploids. *Journal of Genetics* 45: 113-138.
- Dodds, K.S. 1945. Genetical and cytological studies of *Musa*. VI. The development of female cells of certain edible diploids. *Journal of Genetics* 46: 161-179.
- Dodds, K.S., and C.S. Pittendrigh. 1946. Genetical and cytological studies of *Musa*. VII. Certain aspects of polyploidy. *Journal of Genetics* 47: 162-177.
- Dodds, K.S., and N.W. Simmonds. 1946. Genetical and cytological studies of *Musa*. VIII. The formation of polyploid spores. *Journal of Genetics* 47: 223-241.
- Dodds, K.S., and N.W. Simmonds. 1948a. Genetical and cytological studies of *Musa*. IX. The origin of an edible diploid and the significance of inter-specific hybridisation in the banana complex. *Journal of Genetics* 48: 285-296.
- Dodds, K.S., and N.W. Simmonds. 1948b. Sterility and parthenocarpy in diploid hybrids of *Musa*. *Heredity* 2: 101-117.
- Doležel, J. 2004. Cytogenetic and cytometric analysis of nuclear genome in *Musa*. Pp. 245-249 in *Banana Improvement: Cellular, Molecular Biology, and Induced Mutations* (S.M. Jain and R. Swennen, eds.). Science Publishers, Enfield, New Hampshire, USA.
- Doleželová, M., M. Valárik, R. Swennen, J.-P. Horry and J. Doležel. 1998. Physical mapping of the 18S-25S and 5S ribosomal RNA genes in diploid bananas. *Biologia Plantarum* 41: 497-505.
- Domingues, E.T., A. Tulmann Neto, B.M.J. Mendes and A. Ando. 1994. Efeitos de doses de raios gama em ápices caulinares de bananeira (*Musa* spp.) desenvolvidos *in vitro* para indução de mutação. *Pesquisa Agropecuária Brasileira* 29: 1091-1098.

- Dore Swamy, R., and L. Sahijram. 1989. Micropropagation of banana from male floral apices cultured *in vitro*. *Scientia Horticulturae* 40: 181-188.
- Draye, X., F. Lecompte and L. Pagès. 2005. Distribution of banana roots in time and space: New tools for an old science. Pp. 58-74 in *Banana Root System: Towards a Better Understanding for its Productive Management. Proceedings of an International Symposium Held in San José, Costa Rica, 3-5 November 2003* (D.W. Turner and F.E. Rosales, eds.). INIBAP, Montpellier, France.
- Dumpe, B.B., and R. Ortiz. 1996. Apparent male fertility in *Musa* germplasm. *HortScience* 31: 1019-1022.
- Duncan, R.S., and C.A. Chapman. 1999. Seed dispersal and potential forest succession in abandoned agriculture in tropical Africa. *Ecological Applications* 9: 998-1008.
- Dussart, J.F. 2001. Développement d'un outil de diagnostic moléculaire des *Mycosphaerella* spp. champignons pathogènes du bananier. Mémoire de DESS: Amélioration et élaboration de la production végétale, Université Blaise Pascal, Clermont-Ferrand, France.
- Eckstein, K., C. Fraser and W. Joubert. 1998. Greenhouse cultivation of bananas in South Africa. First International Symposium on Banana in the Subtropics, Puerto de la Cruz, Tenerife, Spain. *Acta Horticulturae* 490: 135-146.
- Eden-Green, S.J. 1994. Banana Blood Disease. *Musa* Disease Fact Sheet No. 3. INIBAP, Montpellier, France. 2 pp.
- Elangovan, V., G. Marimuthu and T.H. Kunz. 2000. Nectar-feeding behavior in the short-nosed fruit bat *Cynopterus sphinx* (Pteropodidae). *Acta Chiropterologica* 2: 1-5.
- Englberger, L., and A. Lorens. 2004. Pohnpei Bananas: A Photo Collection – Carotenoid-rich Varieties. Secretariat of the Pacific Community, Suva, Fiji Islands. 29 pp.
- Englberger, L., I. Darnton-Hill, T. Coyne, M.H. Fitzgerald and G.C. Marks. 2003. Carotenoid-rich bananas: A potential food source for alleviating vitamin A deficiency. *Food and Nutrition Bulletin* 24: 303-318.
- Escalant, J.-V., and B. Panis. 2002. Biotechnologies toward the genetic improvement in *Musa*. Pp. 68-85 in XV Reunión Internacional ACORBAT 2002, Cartagena de Indias, Colombia: Memorias, Proceedings, Mémoires. Asociación de Bananeros de Colombia AUGURA, Medellín, Colombia.
- Escalant, J.-V., and C. Teisson. 1989. Somatic embryogenesis and plants from immature zygotic embryos of the species *Musa acuminata* and *Musa balbisiana*. *Plant Cell Reports* 7: 665-668.
- Escalant, J.-V., and C. Teisson. 1993. Somatic embryogenesis and cell suspensions in *Musa*. Pp. 177-180 in Proceedings of the Workshop on Biotechnology Applications for Banana and Plantain Improvement, San José, Costa Rica. INIBAP, Montpellier, France.
- Escalant, J.-V., C. Teisson and F. Côte. 1994. Amplified somatic embryogenesis from male flowers of triploid banana and plantain cultivars (*Musa* spp.). *In Vitro Cellular and Developmental Biology – Plant* 30: 181-186.
- Escalant, J.-V., S. Sharrock, E. Frison, F. Carreel, C. Jenny, R. Swennen and K. Tomekpé. 2002. The Genetic Improvement of *Musa* Using Conventional Breeding, and Modern Tools of Molecular and Cellular Biology. INIBAP, Montpellier, France. iv + 12 pp.

- Eyres, N., N. Hammond and A. Mackie. 2005. Moko Disease *Ralstonia solanacearum* (Race 2, Biovar 1). Government of Western Australia, Department of Agriculture and Food, Factsheet Note 175. 2 pp.
- FAO. 2008. FAOSTAT ProdSTAT: Crops. Food and Agriculture Organization of the United Nations. <http://faostat.fao.org/site/567/default.aspx>
- Fargette, D., G. Konaté, C. Fauquet, E. Muller, M. Peterschmitt and J.M. Thresh. 2006. Molecular ecology and emergence of tropical plant viruses. *Annual Review of Phytopathology* 44: 235-260.
- Fauquet, C.M., and R.N. Beachy. 1993. Status of coat protein-mediated resistance and its potential application for banana viruses. Pp. 69-84 in Proceedings of the Workshop on Biotechnology Applications for Banana and Plantain Improvement, San José, Costa Rica. INIBAP, Montpellier, France.
- Fauré, S., J.-L. Noyer, J.-P. Horry, F. Bakry, C. Lanaud and D. González de León. 1993. Cartographie du genome diploïde des bananiers (*Musa acuminata*) [Genetic mapping of the diploid genome of bananas (*Musa acuminata*)]. Pp. 55-63 in Amélioration génétique des bananiers et plantains pour la résistance aux maladies et ravageurs / Breeding Banana and Plantain for Resistance to Diseases and Pests, Montpellier, France (J. Ganry, ed.). CIRAD-FLHOR and INIBAP, Montpellier, France.
- Fegan, M., and P. Prior. 2006. Diverse members of the *Ralstonia solanacearum* species complex cause bacterial wilts of banana. *Australasian Plant Pathology* 35: 93-101.
- Ferrão, J.E.M. 1992. A Aventura das Plantas e os Descobrimentos Portugueses. Instituto de Investigação Científica Tropical, Comissão Nacional para as Comemorações dos Descobrimentos Portugueses, and Fundação Berardo, Lisbon, Portugal. 247 pp.
- Ferreira, S.A., E.E. Trujillo, D.Y. Ogata, N. Matayoshi and M. Isherwood. 1997. Banana Bunchy Top Virus. University of Hawaii at Manoa, CTAHR, Cooperative Extension Service, Plant Disease PD-12. 4 pp.
- Fortescue, J.A., and D.W. Turner. 2004. Pollen fertility in *Musa*: Viability in cultivars grown in southern Australia. *Australian Journal of Agricultural Research* 55: 1085-1091.
- Fortescue, J.A., and D.W. Turner. 2005. The occurrence of a micropylar exudate in *Musa* and *Ensete* (Musaceae). *Scientia Horticulturae* 104: 445-461.
- Frison, E.A., and S. Sharrock. 1999. The economic, social and nutritional importance of banana in the world. Pp. 21-35 in Bananas and Food Security. International Symposium, Douala, Cameroon (C. Picq, E. Fouré and E.A. Frison, eds.). INIBAP, Montpellier, France.
- Frison, E.A., J.-V. Escalant and S. Sharrock. 2004. The Global *Musa* Genomics Consortium: A boost for banana improvement. Pp. 341-349 in Banana Improvement: Cellular, Molecular Biology, and Induced Mutations (S.M. Jain and R. Swennen, eds.). Science Publishers, Enfield, New Hampshire, USA.
- Galán Saúco, V. 1992. Los Frutales Tropicales en los Subtrópicos. II. El Plátano (Banano). Mundi-Prensa Libros, Madrid. 173 pp.
- Ganapathi, T.R., P.S. Suprasanna, V.A. Bapat, V.M. Kulkarni and P.S. Rao. 1999. Somatic embryogenesis and plant regeneration from male flower buds in banana. *Current Science (Bangalore)* 76: 1228-1231.

- Ganga, M., and N. Chezhiyan. 2002. Influence of the antimetabolic agents colchicine and oryzalin on *in vitro* regeneration and chromosome doubling of diploid bananas (*Musa* spp.). *Journal of Horticultural Science & Biotechnology* 77: 572-575.
- Ganry, J. 1980. Action de la température et du rayonnement d'origine solaire sur la vitesse de croissance des feuilles du bananier (*Musa acuminata* Colla). Application à l'étude du rythme de développement de la plante et relation avec la productivité. Ph.D. thesis, Université Paris VII, France. 331 pp.
- Gawel, N.J., R.L. Jarret and A.P. Whittemore. 1992. Restriction fragment length polymorphism (RFLP)-based phylogenetic analysis of *Musa*. *Theoretical and Applied Genetics* 84: 286-290.
- Gayral, P., J.-C. Noa-Carrazana, M. Lescot, F. Lheureux, B.E.L. Lockhart, T. Matsumoto, P. Piffanelli and M.-L. Iskra-Caruana. 2008. A single banana streak virus integration event in the banana genome as the origin of infectious endogenous pararetrovirus. *Journal of Virology* 82: 6697-6710.
- Ge, X.J., M.H. Liu, W.K. Wang, B.A. Schaal and T.Y. Chiang. 2005. Population structure of wild bananas, *Musa balbisiana*, in China determined by SSR fingerprinting and cpDNA PCR-RFLP. *Molecular Ecology* 14: 933-944.
- Geering, A.D.W., N.E. Olszewski, G. Harper, B.E.L. Lockhart, R. Hull and J.E. Thomas. 2005. Banana contains a diverse array of endogenous badnaviruses. *Journal of General Virology* 86: 511-520.
- Geri, C., and F.S.P. Ng. 2005. *Musa lokok* (Musaceae), a new species of banana from Bario, Borneo. *Gardens' Bulletin Singapore* 57: 279-283.
- GMGC. 2002. Strategy for the Global *Musa* Genomics Consortium. Report of a Meeting Held in Arlington, USA, 17-20 July 2001. INIBAP, Montpellier, France. 44 pp.
- Gold, C.S., and S. Messiaen. 2000. The Banana Weevil *Cosmopolites sordidus*. *Musa* Pest Fact Sheet No. 4. INIBAP, Montpellier, France. 4 pp.
- Gold, C.S., J.E. Peña and E.B. Karamura. 2001. Biology and integrated pest management for the banana weevil *Cosmopolites sordidus* (Germar) (Coleoptera: Curculionidae). *Integrated Pest Management Reviews* 6: 79-155.
- Gold, C.S., B. Pinese and J.E. Peña. 2002. Pests of banana. Pp. 13-56 in J.E. Peña, J.L. Sharp and M. Wysocki, eds., *Tropical Fruit Pests and Pollinators: Biology, Economic Importance, Natural Enemies and Control*. CABI Publishing, Wallingford, UK.
- Gómez Kosky, R., M. de Faria Silva, L. Posada Pérez, T. Gilliard, F. Bernal Martínez, M. Reyes Vega, M. Chávez Milian and E. Quiala Mendoza. 2002. Somatic embryogenesis of the banana hybrid cultivar FHIA-18 (AAAB) in liquid medium and scaled-up in a bioreactor. *Plant Cell, Tissue and Organ Culture* 68: 21-26.
- Gopinath, C.Y. 1995. How to cook a *Musa* pseudostem. *InfoMusa* 4(2): 31.
- Gould, E. 1978. Foraging behavior of Malaysian nectar-feeding bats. *Biotropica* 10: 184-193.
- Grapin, A., J. Schwendiman and C. Teisson. 1996. Somatic embryogenesis in plantain banana. *In Vitro Cellular and Developmental Biology – Plant* 33: 66-71.

- Grabin, A., J.-L. Ortíz, T. Lescot, N. Ferrière and F.X. Côte. 2000. Recovery and regeneration of embryogenic cultures from female flowers of False Horn plantain. *Plant Cell, Tissue and Organ Culture* 61: 237-244.
- Grob, M., J. Reindl, S. Vieths, B. Wuthrich and B.K. Ballmer-Weber. 2002. Heterogeneity of banana allergy: Characterization of allergens in banana-allergic patients. *Annals of Allergy, Asthma and Immunology* 89: 513-516.
- Häkkinen, M. 2001. *Musa laterita*: An ornamental banana. *Fruit Gardener (Fullerton)* 33(4): 6-7.
- Häkkinen, M. 2003a. *Musa campestris* Beccari varieties in northern Borneo. *Philippine Agricultural Scientist* 86: 424-435.
- Häkkinen, M. 2003b. Taxonomic history and identity of *Musa rubra* Wall. ex Kurz, Musaceae. *Philippine Agricultural Scientist* 86: 82-98.
- Häkkinen, M. 2004a. *Musa campestris* Becc. (Musaceae) varieties in northern Borneo. *Folia Malaysiana* 5: 81-100.
- Häkkinen, M. 2004b. *Musa voonii*, a new *Musa* species from northern Borneo and discussion of the section *Callimusa* in Borneo. *Acta Phytotaxonomica et Geobotanica* 55: 79-88.
- Häkkinen, M. 2004c. Variation in Bornean *Musa campestris* Beccari. *The HSPR Newsletter* 9(4): 1-3.
- Häkkinen, M. 2005a. *Musa azizii*, a new *Musa* species (Musaceae) from northern Borneo. *Acta Phytotaxonomica et Geobotanica* 56: 27-31.
- Häkkinen, M. 2005b. Ornamental bananas: Notes on the section *Rhodochlamys* (Musaceae). *Folia Malaysiana* 6: 49-72.
- Häkkinen, M. 2006a. *Musa barioensis*, a new *Musa* species (Musaceae) from northern Borneo. *Acta Phytotaxonomica et Geobotanica* 57: 55-60.
- Häkkinen, M. 2006b. *Musa lawitiensis* Nasution & Supard. (Musaceae) and its intraspecific taxa in Borneo. *Adansonia*, série 3, 28: 55-65.
- Häkkinen, M. 2006c. Taxonomic identity of *Musa rosea* (Musaceae) in Southeast Asia. *Novon* 16: 492-496.
- Häkkinen, M. 2007. Ornamental bananas: Focus on *Rhodochlamys*. *Chronica Horticulturae* 47(2): 7-12.
- Häkkinen, M. 2008. Taxonomic identity of *Musa nagensium* (Musaceae) in Southeast Asia. *Novon* 18: 336-339.
- Häkkinen, M. 2009. *Musa chunii*, a new species (Musaceae) from Yunnan, China and taxonomic identity of *Musa rubra*. *Journal of Systematics and Evolution* 47: 87-91.
- Häkkinen, M., and E. De Langhe. 2001. *Musa acuminata* in Northern Borneo: Preliminary Report. INIBAP, Montpellier, France. 23 pp.
- Häkkinen, M., and K. Meekiong. 2004. A new species of the wild banana genus, *Musa* (Musaceae), from Borneo. *Systematics and Biodiversity* 2: 169-173.

- Häkkinen, M., and K. Meekiong. 2005. *Musa borneensis* Becc. (Musaceae) and its intraspecific taxa in Borneo. *Acta Phytotaxonomica et Geobotanica* 56: 213-230.
- Häkkinen, M., and S. Sharrock. 2002. Diversity in the genus *Musa* – Focus on *Rhodochlamys*. Pp. 16-23 in Networking Banana and Plantain: INIBAP Annual Report 2001. INIBAP, Montpellier, France.
- Häkkinen, M., and H. Väre. 2008a. A taxonomic revision of *Musa aurantiaca* (Musaceae) in Southeast Asia. *Journal of Systematics and Evolution* 46: 89-92.
- Häkkinen, M., and H. Väre. 2008b. Taxonomic history and identity of *Musa dasycarpa*, *M. velutina* and *M. assamica* (Musaceae) in Southeast Asia. *Journal of Systematics and Evolution* 46: 230–235.
- Häkkinen, M., and H. Väre. 2008c. Typification and check-list of *Musa* L. names (Musaceae) with nomenclatural notes. *Adansonia*, série 3, 30: 63-112.
- Häkkinen, M., and R.H. Wallace. 2007. *Musa siamensis*, a new *Musa* species (Musaceae) from S.E. Asia. *Folia Malaysiana* 8: 61–70.
- Häkkinen, M., and H. Wang. 2007. New species and variety of *Musa* (Musaceae) from Yunnan, China. *Novon* 17: 440-446.
- Häkkinen, M., and H. Wang. 2008. *Musa zaifui* sp. nov. (Musaceae) from Yunnan, China. *Nordic Journal of Botany* 26: 42-46. ??
- Häkkinen, M., M. Suleiman and J. Gisil. 2005. *Musa beccarii* (Musaceae) varieties in Sabah, northern Borneo. *Acta Phytotaxonomica et Geobotanica* 56: 135-140.
- Häkkinen, M., C.H. Teo and Y.R. Othman. 2007a. Genome constitution for *Musa beccarii* (Musaceae) varieties. *Acta Phytotaxonomica Sinica* 45: 69-74.
- Häkkinen, M., P. Suchuánková, M. Doleželová, E. Hřibová and J. Doležel. 2007b. Karyological observations in *Musa beccarii* var. *hottana*. *Acta Phytotaxonomica et Geobotanica* 58: 112-118.
- Häkkinen, M., G. Hu, H. Chen and Q. Wang. 2007c. The detection and analysis of genetic variation and paternity in *Musa* section *Rhodochlamys* (Musaceae). *Folia Malaysiana* 8: 71-86.
- Häkkinen, M., H. Wang and X.-J. Ge. 2008. *Musa itinerans* (Musaceae) and its intraspecific taxa in China. *Novon* 18: 50-60.
- Hamill, S.D., M.K. Smith and W.A. Dodd. 1992. *In vitro* induction of banana autotetraploids by colchicine treatment of micropropagated diploids. *Australian Journal of Botany* 40: 887-896.
- Hammond Kosack, K.E., and J.D.G. Jones. 1997. Plant disease resistance genes. *Annual Review of Plant Physiology and Plant Molecular Biology* 48: 575-607.
- Hayward, A.C. 2006. Fruit rots of banana caused by *Ralstonia solanacearum* race 2: Questions of nomenclature, transmission and control. *InfoMusa* 15(1-2): 7-10.
- Heslop-Harrison, J.S., and T. Schwarzacher. 2007. Domestication, genomics and the future of banana. *Annals of Botany* 100: 1073-1084.

- Hore, D.K., B.D. Sharma and G. Pandey. 1992. Status of banana in North-East India. *Journal of Economic and Taxonomic Botany* 16: 447-455.
- Horry, J.-P., and M. Jay. 1990. An evolutionary background of bananas as deduced from flavonoids diversification. Pp. 41-55 in Identification of Genetic Diversity in the Genus *Musa*. Proceedings of an International Workshop Held at Los Baños, Philippines, 5-10 September 1988 (R.L. Jarret, ed.). INIBAP, Montpellier, France.
- Horry, J.-P., J. Doležel, M. Doleželová and M.A. Lysák. 1998. Do natural A × B tetraploid bananas exist? *InfoMusa* 7(1): 5-6.
- Howell, E.C., H.J. Newbury, R.L. Swennen, L.A. Withers and B.V. Ford Lloyd. 1994. The use of RAPD for identifying and classifying *Musa* germplasm. *Genome* 37: 328-332.
- Hřibová, E., M. Doleželová, C.D. Town, J. Macas and J. Doležel. 2007. Isolation and characterization of the highly repeated fraction of the banana genome. *Cytogenetic and Genome Research* 119: 268-274.
- Hwang, S.-C., and W.-H. Ko. 2004. Cavendish banana cultivars resistant to Fusarium wilt acquired through somaclonal variation in Taiwan. *Plant Disease* 88: 580-588.
- Hwang, S.-C., C.-Y. Tang, E.A. Frison, J.-P. Horry and D. De Waele. 1996. Somaclonal variation and its use for improving Cavendish (AAA dessert) bananas in Taiwan. Pp. 173-181 in New Frontiers in Resistance Breeding for Nematode, Fusarium and Sigatoka. Proceedings of a Workshop 2-5 October 1995, Kuala Lumpur, Malaysia. INIBAP, Montpellier, France.
- INIBAP. 1995. Major banana and plantain types cultivated around the world. Pp. 23-25 in The Global Banana and Plantain Network: INIBAP Annual Report 1994. INIBAP, Montpellier, France.
- IPGRI-INIBAP and CIRAD. 1996. Descriptors for Banana (*Musa* spp.), [3rd ed.]. International Plant Genetic Resources Institute, Rome; INIBAP, Montpellier, France. 59 pp.
- Israeli, Y., O. Reuveni and E. Lahav. 1991. Qualitative aspects of somaclonal variations in banana propagated by *in vitro* techniques. *Scientia Horticulturae* 48: 71-88.
- Itino, T., M. Kato and M. Hotta. 1991. Pollination ecology of the two wild bananas, *Musa acuminata* subsp. *halabanensis* and *M. salaccensis*: Chiropterophily and ornithophily. *Biotropica* 23: 151-158.
- Jalil, M., N. Khalid and R.Y. Othman. 2003. Plant regeneration from embryogenic suspension cultures of *Musa acuminata* cv. Mas (AA). *Plant Cell, Tissue and Organ Culture* 75: 209-214.
- Jarret, R.L., and N.J. Gowel. 1995. Molecular markers, genetic diversity and systematics in *Musa*. Pp. 66-83 in S. Gowen, ed., Bananas and Plantains. Chapman & Hall, London, UK.
- Jarret, R.L., N. Gowel, A. Whittemore and S. Sharrock. 1992. RFLP-based phylogeny of *Musa* species in Papua New Guinea. *Theoretical and Applied Genetics* 84: 579-584.
- Javed, M.A., M. Chai and R.Y. Othman. 2004. Study of resistance of *Musa acuminata* to *Fusarium oxysporum* using RAPD markers. *Biologia Plantarum* 48: 93-99.
- Johannessen, C.L. 1970. The dispersal of *Musa* in Central America: The domestication process in action. *Annals of the Association of American Geographers* 60: 689-699.

- Jones, D.R. 2002. Risk of spread of banana diseases in international trade and germplasm exchange. Pp. 105-113 in XV Reunión Internacional ACORBAT 2002, Cartagena de Indias, Colombia: Memorias, Proceedings, Mémoires. Asociación de Bananeros de Colombia AUGURA, Medellín, Colombia.
- Kagy, V., and F. Carreel. 2004. Bananas in New Caledonian Kanak society: Their socio-cultural value in relation with their origins. *Ethnobotany Research & Applications* 2: 29-35.
- Kamaté, K., S. Brown, P. Durand, J.-M. Bureau, D. De Nay and T.H. Trinh. 2001. Nuclear DNA content and base composition in 28 taxa of *Musa*. *Genome* 44: 622-627.
- Kangire, A., and M. Rutherford. 2001. Wilt-like Disorder of Bananas in Uganda. *Musa Disease Factsheet* No. 10. INIBAP, Montpellier, France. 4 pp.
- Karamura, D.A. 1999. Numerical Taxonomic Studies of the East African Highland Bananas (*Musa* AAA-East Africa) in Uganda. INIBAP, Montpellier, France. 192 pp.
- Karamura, D., and B. Pickersgill. 1999. A classification of the clones of East African Highland bananas (*Musa*) found in Uganda. *Plant Genetic Resources Newsletter* 119: 1-6.
- Karamura, E.B., and D.A. Karamura. 1995. Banana morphology – part II: The aerial shoot. Pp. 190-205 in S. Gowen, ed., *Bananas and Plantains*. Chapman & Hall, London, UK.
- Kennedy, J. 2008. Pacific bananas: Complex origins, multiple dispersals? *Asian Perspectives* 47: 75-94.
- Kiew, R. 1987. Notes on the natural history of the Johore banana, *Musa gracilis* Holttum. *Malayan Nature Journal* 41: 239-248.
- Kiggundu, A., C.S. Gold, M.T. Labuschagne, D. Vuylsteke and S. Louw. 2003. Levels of host plant resistance to banana weevil, *Cosmopolites sordidus* (Germer) (Coleoptera: Curculionidae), in Ugandan *Musa* germplasm. *Euphytica* 133: 267-277.
- Kiggundu, A., C.S. Gold, M.T. Labuschagne, D. Vuylsteke and S. Louw. 2007. Components of resistance to banana weevil (*Cosmopolites sordidus*) in *Musa* germplasm in Uganda. *Entomologia Experimentalis et Applicata* 122: 27-35.
- Kress, W.J., and C.D. Specht. 2005. Between Cancer and Capricorn: Phylogeny, evolution and ecology of the primarily tropical Zingiberales. *Det Kongelige Danske Videnskaberne Selskab, Biologiske Skrifter* 55: 459-478.
- Kress, W.J., and C.D. Specht. 2006. The evolutionary and biogeographic origin and diversification of the tropical monocot order Zingiberales. *Aliso* 22: 621-632.
- Kress, W.J., L.M. Prince, W.J. Hahn and E.A. Zimmer. 2001. Unraveling the evolutionary radiation of the families of the Zingiberales using morphological and molecular evidence. *Systematic Biology* 50: 926-944.
- Krikorian, A.D., M.E. Scott, S.S. Cronauer Mitra and D.L. Smith. 1995. *Musa* callus and cell culture: Strategies, achievements and directions. Pp. 9-23 in *In Vitro Mutation Breeding of Bananas and Plantains* (E. Amano and R.L. Jarret, eds.). IAEA-TECDOC-800, Joint FAO/IAEA Division of Nuclear Techniques in Food and Agriculture, Vienna, Austria.

- Kulkarni, V.M., T.R. Ganapathi, P. Suprasanna and V.A. Bapat. 2007. *In vitro* mutagenesis in banana (*Musa* spp.) using gamma irradiation. Pp. 543-559 in S.M. Jain and H. Häggman, eds., *Protocols for Micropropagation of Woody Trees and Fruits*. Springer, Dordrecht, The Netherlands.
- Kurien, S., P.S. Kumar, N.V. Kamalam and P.A. Wahid. 2002. Nutrient cycling from the *Musa* mother plant at various physiological stages to suckers as affected by spacing and sucker retention using tracer techniques. *Fruits (France)* 57: 143-151.
- Kurien, S., P.S. Kumar, N.V. Kamalam and P.A. Wahid. 2006. Intermat and intramat competition in banana studied using ³²P. *Fruits (France)* 61: 225-235.
- Kwa, M., and K. Tomekpé. 2000. Observations de la transition des fleurs femelles vers les fleurs mâles sur l'inflorescence des bananiers et plantains. *Fruits (France)* 55: 171-179.
- Lagoda, P.J.L., J.-L. Noyer, D. Dambier, F.-C. Baurens and C. Lanaud. 1996. Abundance and distribution of SSR (simple sequence repeats) in the Musaceae family: Microsatellite markers to map the banana genome. Pp. 287-295 in *Induced Mutations and Molecular Techniques for Crop Improvement: Proceedings of an International Symposium [IAEA/FAO], Vienna, 19-23 June 1995*. IAEA-SM-340/016, Vienna, Austria.
- Lagoda, P., J.-L. Noyer, F.-C. Baurens, L. Grivet, L.-M. Raboin, C. Amson, G. Aubert, L. Costet, C. Lanaud, D. Dambier, J. Ganry, H. Tezenas du Montcel, J.-P. Horry, F. Bakry, P. Ollitrault, F. Carreel, E. Auboiron, E. Fouré, C. Jenny, K. Tomekpé, A. Grapin, S. Fauré, F. Reschoeur and D. González de León. 1998a. Results of a *Musa* mapping project. Pp. 35-43 in *Use of Novel DNA Fingerprinting Techniques for the Detection and Characterization of Genetic Variation in Vegetatively Propagated Crops*. Final Research Co-ordination Meeting, Mumbai, India (E. Weck and A. Ashri, eds.). IAEA-TECDOC-1047, Vienna, Austria.
- Lagoda, P.J.L., J.-L. Noyer, D. Dambier, F.-C. Baurens, A. Grapin and C. Lanaud. 1998b. Sequence tagged microsatellite site (STMS) markers in the Musaceae. *Molecular Ecology* 7: 659-663.
- Lahav, E., and D.W. Turner. 1983. *Fertilizing for High Yield: Banana*. International Potash Institute Bulletin 7, Berne. 62 pp.
- Landa, R., A. Rayas, T. Ramírez, J. Ventura, J. Albert and O. Roca. 1999. Study on the pollen fertility of several *Musa* cultivars used in the INIVIT genetic improvement programme. *InfoMusa* 8(1): 27.
- Law, B.S., and M. Lean. 1999. Common blossom bats as pollinators in fragmented Australian tropical rainforest. *Biological Conservation* 91: 201-212.
- Le Provost, G., M.-L. Iskra-Caruana, I. Acina and P.-Y. Teycheney. 2006. Improved detection of episomal banana streak viruses by multiplex immunocapture PCR. *Journal of Virological Methods* 137: 7-13.
- Lebot, V. 1999. Biomolecular evidence for plant domestication in Sahul. *Genetic Resources and Crop Evolution* 46: 619-628.
- Lee, K.S., F.J. Zapata-Arias, H. Brunner and R. Afza. 1997. Histology of somatic embryo initiation and organogenesis from rhizome explants of *Musa* spp. *Plant Cell, Tissue and Organ Culture* 51: 1-8.
- Lejju, B.J., P. Robertshaw and D. Taylor. 2006. Africa's earliest bananas? *Journal of Archaeological Science* 33: 102-113.

- Lescot, M., P. Piffanelli, A.Y. Ciampi, *et al.* 2008. Insights into the *Musa* genome: Syntenic relationships to rice and between *Musa* species. *BMC Genomics* 9: 58, doi:10.1186/1471-2164-9-58
- Lheureux, F., N. Laboureau, E. Muller, B.E.L. Lockhart and M.-L. Iskra-Caruana. 2007. Molecular characterization of banana streak acuminata Vietnam virus isolated from *Musa acuminata siamea* (banana cultivar). *Archives of Virology* 152: 1409-1416.
- Linnaeus, C. 1736/1967. *Musa Cliffortiana* Florens Hartecampi 1736 Prope Harlemum. Lugduni Batavorum, Leiden, The Netherlands / J. Cramer, Lehre, Germany. 50 pp.
- Linnaeus, C. 2007. *Musa Cliffortiana*: Clifford's Banana Plant (S. Freer, English translator). *Regnum Vegetabile* 148. 264 pp.
- Liu, A.-Z., D.-Z. Li, H. Wang and W.J. Kress. 2002a. Ornithophilous and chiropterophilous pollination in *Musa itinerans* (Musaceae), a pioneer species in tropical rain forests of Yunnan, southwestern China. *Biotropica* 34: 254-260.
- Liu, A.-Z., D.-Z. Li and X.-W. Li. 2002b. Taxonomic notes on wild bananas (*Musa*) from China. *Botanical Bulletin of Academia Sinica* 43: 77-81.
- Lockhart, B.E. 1995. Banana Streak Badnavirus Infection in *Musa*: Epidemiology, Diagnosis and Control. Food & Fertilizer Technology Center for the Asian and Pacific Region, Taipei, Technical Bulletin 143. 11 pp.
- Lockhart, B.E.L., and R.E. Jones. 1999. Banana streak. Pp. 263-274 in D.R. Jones, ed., *Diseases of Banana, Abacá and Enset*. CABI Publishing, Wallingford, UK.
- Lu, P., K.-C. Woo and Z.-T. Liu. 2002. Estimation of whole-plant transpiration of bananas using sap flow measurements. *Journal of Experimental Botany* 53: 1771-1779.
- Ma, S.S., and C.T. Shii. 1972. *In vitro* formation of adventitious buds in banana shoot apex following decapitation. *Journal of the Chinese Society for Horticultural Science* 18: 135-142.
- Magera, B.E., A.E. Phillips and P.B. Williams. 1997. Comparison of banana proteins in fresh, frozen, commercial and baby food extracts. Meeting of the American Academy of Allergy, Asthma and Immunology Society, San Francisco, USA. *Journal of Allergy and Clinical Immunology* 99: S143.
- Malek, K., and R.A. Dietrich. 1999. Defense on multiple fronts: How do plants cope with diverse enemies? *Trends in Plant Science* 4: 215-219.
- Mante, S., and H.B. Tepper. 1983. Propagation of *Musa textilis* Née plants from apical meristem slices *in vitro*. *Plant Cell, Tissue and Organ Culture* 2: 151-159.
- Manzo-Sánchez, G., S. Guzmán-González, C.M. Rodríguez-García, A. James and M. Orozco-Santos. 2005. Biología de *Mycosphaerella fijiensis* Morelet y su interacción con *Musa* spp. *Revista Mexicana de Fitopatología* 23: 87-96.
- Marín, D.H., T.B. Sutton and K.R. Barker. 1998. Dissemination of bananas in Latin America and the Caribbean and its relationship to the occurrence of *Radopholus similis*. *Plant Disease* 82: 964-974.
- Marín, D.H., R.A. Romero, M. Guzmán and T.B. Sutton. 2003. Black Sigatoka: An increasing threat to banana cultivation. *Plant Disease* 87: 208-222.

- Marroquin, C.G., C. Paduscheck, J.-V. Escalant and C. Teisson. 1993. Somatic embryogenesis and plant regeneration through cell suspensions in *Musa acuminata*. *In Vitro Cellular and Developmental Biology – Plant* 29: 43-46.
- Mary, A.E., and S. Sathiamoorthy. 2003. Effect of packing treatments on green life and peel-split of banana cv. Rasthali (AAB). *Indian Journal of Agricultural Research* 37: 72-75.
- Matsumoto, K., and H. Yamaguchi. 1990. Selection of aluminium-tolerant variants from irradiated protocorm-like bodies in banana. *Tropical Agriculture (Trinidad and Tobago)* 67: 229-232.
- Matsumoto, K., and H. Yamaguchi. 1991. Induction and selection of aluminium tolerance in the banana. International Symposium on the Contribution of Plant Mutation Breeding to Crop Improvement, Vienna (Austria). Joint FAO/IAEA Division of Nuclear Techniques in Food and Agriculture 2: 249-256.
- Matsumoto, K., L.S. Morais, G.R. Vianna, F.J.L. Aragão and E.L. Rech. 2002a. Genetic transformation of banana embryogenic cells through particle bombardment using a herbicide-resistance gene as selectable marker. International Symposium on Tropical and Subtropical Fruits, Cairns, Queensland, Australia. *Acta Horticulturae* 575: 61-67.
- Matsumoto, K., A.D. Vilarinhos and S. Oka. 2002b. Somatic hybridization by electrofusion of banana protoplasts. *Euphytica* 125: 317-324.
- May, G.D., R. Afza, H.S. Mason, A. Wiecko, F.J. Novak and C.J. Arntzen. 1995. Generation of transgenic banana (*Musa acuminata*) plants via *Agrobacterium*-mediated transformation. *Bio/Technology* 13: 486-492.
- Mbida M., C., H. Doutrelepon, L. Vrydaghs, R.L. Swennen, R.J. Swennen, H. Beeckman, E. De Langhe and P. de Maret. 2001. First archaeological evidence of banana cultivation in Central Africa during the third millennium before present. *Vegetation History and Archaeobotany* 10: 1-6.
- Mbida M., C., H. Doutrelepon, L. Vrydaghs, H. Beeckman, R. Swennen, R.J. Swennen and E. De Langhe. 2004. Yes, there were bananas in Cameroon more than 2000 years ago. *InfoMusa* 13(1): 40-42.
- Mbida M., C., H. Doutrelepon, L. Vrydaghs, R. Swennen, R.J. Swennen, H. Beeckman, E. De Langhe and P. de Maret. 2005. The initial history of bananas in Africa: A reply to Jan Vansina (*Azania*, 2003). *Azania* 40: 128-135.
- Mbida, C., E. De Langhe, L. Vrydaghs, H. Doutrelepon, R. Swennen, W. Van Neer and P. de Maret. 2006. Phytolith evidence for the early presence of domesticated banana (*Musa*) in Africa. Pp. 68-81 in M.A. Zeder, D.G. Bradley, E. Emshwiller and B.D. Smith, eds., Documenting Domestication: New Genetic and Archaeological Paradigms. University of California Press, Berkeley.
- Meekiong, K., I.B. Ipor and C.S. Tawan. 2006. A new banana: *Musa sakaiana* (Musaceae) from Sarawak, Malaysia. *Folia Malaysiana* 6: 131-138.
- Meerman, J.C. 2003. The banana *Musa balbisiana* Colla established in central Belize. Biological-Diversity.info: Biological Diversity in Belize. http://biological-diversity.info/invasive_musa.htm (3 pp.).

- Meerman, J.C., B. Holland, A. Howe, H.L. Jones and B.W. Miller. 2003. *Musa balbisiana* (Musaceae). Pp. 24-25 in Rapid Ecological Assessment: Mayflower Bocawina National Park, Vol. 1. Friends of Mayflower/Bocawina, Belize.
- Megia, R., R. Haicour, L. Rossignol, S. Darasinh and D. Sihachakr. 1992. Callus formation from cultured protoplasts of banana (*Musa* spp.). *Plant Science (Limerick)* 85: 91-98.
- Megia, R., R. Haicour, S. Tizroutine, V.B. Trang, L. Rossignol, D. Sihachakr and J. Schwendiman. 1993. Plant regeneration from cultured protoplasts of the cooking banana cv. Bluggoe (*Musa* spp., ABB group). *Plant Cell Reports* 13: 41-44.
- Meijer, W. 1961. Notes on wild species of *Musa* from Sumatra. *Acta Botanica Neerlandica* 10: 248-256.
- Mendes, B.M.J., F.J. Mendes, A. Tulmann Neto, C.G.B. Demetrio and O.R. Puske. 1996. Efficacy of banana plantlet production by micropropagation. *Pesquisa Agropecuária Brasileira* 31: 863-867.
- Meng L.-Z., Gao X.-X. and Chen J. 2008. Seed dispersal and spatial-temporal variation of seed predation of *Musa acuminata* in Xishuangbanna, southwest China. *Zhiwu Shengtai Xuebao [Acta Phytocologica Sinica]* 32: 133-142. (in Chinese)
- Mikkola, J.H., H. Alenius, N. Kalkkinen, K. Turjanmaa, T. Palosuo and T. Reunala. 1998. Hevein-like protein domains as a possible cause for allergen cross-reactivity between latex and banana. *Journal of Allergy and Clinical Immunology* 102: 1005-1012.
- Mobambo, K.N., F. Gauhl, D. Vuylsteke, R. Ortiz, C. Pasberg-Gauhl and R. Swennen. 1993. Yield loss in plantain from black Sigatoka leaf spot and field performance of resistant hybrids. *Field Crops Research* 35: 35-42.
- Moore, N.Y., S. Bentley, K.G. Pegg and D.R. Jones. 1995. Fusarium Wilt of Banana. *Musa Disease Fact Sheet No. 5*. INIBAP, Montpellier, France. 4 pp.
- Mor, T.S., L.M.A. Gomez and K.E. Palmer. 1998. Perspective: Edible vaccines – a concept coming of age. *Trends in Microbiology* 6: 449-453.
- Moreira, R.S. 1999. Banana: Teoria e Prática de Cultivo, 2nd ed. Fundação Cargill, Campinas, São Paulo, Brazil. CD-ROM.
- Morton, J.F. 1987. Banana. Pp. 29-46 in J.F. Morton, Fruits of Warm Climates. Julia F. Morton [publisher], Miami, Florida, USA.
- Mourichon, X., J. Carlier, E. Fouré and PROMUSA Sigatoka Working Group. 1997. Sigatoka Leaf Spot Diseases. *Musa Disease Fact Sheet No. 8*. INIBAP, Montpellier, France. 4 pp.
- Mutsaers, M. 1993. Natural pollination of plantain and banana at Onne. *MUSAfrica* 2: 2-3.
- Nascimento, J.R.O, B.R. Cordenunsi and F.M. Lajolo. 1999. Starch to sucrose metabolism in banana. Abstract, International Symposium on the Molecular & Cellular Biology of Banana, Boyce Thompson Institute, Ithaca, USA, 22-25 March 1999. Cornell University, Ithaca, New York. Abstract republished in *InfoMusa* 8(1), *PROMUSA* 3: ix-x.
- Nasution, R.E. 1991. A Taxonomic Study of the Species *Musa acuminata* Colla with its Intraspecific Taxa in Indonesia. *Memoirs of the Tokyo University of Agriculture* 32: 1-122.

- Nasution, R.E. 1993. Rediscovery of two wild seeded bananas of Indonesia. *InfoMusa* 2(2): 16-18.
- Nasution, R.E., and I. Yamada. 2001. Pisang-Pisang Liar di Indonesia (S.N. Kartikasari, ed.). LIPI, Pusat Penelitian dan Pengembangan Biologi, Bogor. xv + 48 pp. (in Indonesian)
- Naughton-Treves, L., A. Treves, C. Chapman and R. Wrangham. 1998. Temporal patterns of crop-raiding by primates: Linking food availability in croplands and adjacent forest. *Journal of Applied Ecology* 35: 596-606.
- Ndowora, T., G. Dahal, D. LaFleur, G. Harper, R. Hull, N.E. Olszewski and B. Lockhart. 1999a. Evidence that *Badnavirus* infection in *Musa* can originate from integrated pararetroviral sequences. *Virology* 255: 214-220.
- Ndowora, T., G. Dahal, D. LaFleur, G. Harper, R. Hull, N.E. Olszewski and B. Lockhart. 1999b. Stress induced episomal expression of banana streak badnavirus sequences integrated in the *Musa* genome. Abstract p. 27, International Symposium on the Molecular & Cellular Biology of Banana, Boyce Thompson Institute, Ithaca, USA, 22-25 March 1999. Cornell University, Ithaca, New York. Abstract republished in *InfoMusa* 8(1), *PROMUSA* 3: xi.
- Noltie, H.J. 1994a. Flora of Bhutan, Including a Record of Plants from Sikkim and Darjeeling, Volume 3, Part 1, Angiospermae: Dioscoreaceae to Pandanaceae. Royal Botanic Garden, Edinburgh. 456 pp.
- Noltie, H.J. 1994b. Notes relating to the flora of Bhutan: XXVIII. Eriocaulaceae (*Eriocaulon*), Musaceae (*Musa*), Cyperaceae (*Actinoscirpus*). *Edinburgh Journal of Botany* 51: 169-174.
- Norgrove, L., and S. Hauser. 2002. Yield of plantain grown under different tree densities and 'slash and mulch' versus 'slash and burn' management in an agrisilvicultural system in southern Cameroon. *Field Crops Research* 78: 185-195.
- Novak, F.J., R. Afza, M. Van Duren, M. Perea-Dallos, B.V. Conger and X. Tang. 1989. Somatic embryogenesis and plant regeneration in suspension cultures of dessert (AA and AAA) and cooking (ABB) bananas (*Musa* spp.). *Bio/Technology* 7: 154-159.
- Novak, F.J., R. Afza, M. Van Duren and M.S. Omar. 1990. Mutation induction by gamma irradiation of *in vitro* cultured shoot tips of banana and plantain (*Musa* cvs.). *Tropical Agriculture (Trinidad and Tobago)* 67: 21-28.
- Novak, F.J., H. Brunner, R. Afza, R. Morpurgo, R.K. Upadhyay, M. Van Duren, M. Sacchi, J. Sitti Hawa, A. Khatri, G. Kahl, D. Kaemmer, J. Ramser and K. Weising. 1993. Improvement of *Musa* through biotechnology and mutation breeding. Pp. 143-158 in Proceedings of the Workshop on Biotechnology Applications for Banana and Plantain Improvement, San José, Costa Rica. INIBAP, Montpellier, France.
- Noyer, J.-L., S. Causse, K. Tomekpé, A. Bouet and F.-C. Baurens. 2005. A new image of plantain diversity assessed by SSR, AFLP and MSAP markers. *Genetica* 124: 61-69.
- Nur, N. 1976. Studies on pollination in Musaceae. *Annals of Botany* 40: 167-177.
- Nwakanma, D.C., M. Pillay, B.E. Okoli and A. Tenkouano. 2003. Sectional relationships in the genus *Musa* L. inferred from the PCR-RFLP of organelle DNA sequences. *Theoretical and Applied Genetics* 107: 850-856.

- OGTR. 2008. The Biology of *Musa* L. (Banana), Ver. 1. Office of the Gene Technology Regulator, Australian Government Department of Health and Ageing, Canberra. 77 pp.
- Orhan, İ. 2001. Biological activities of *Musa* species. *Ankara Üniversitesi Eczacılık Fakültesi Dergisi / Ankara University Journal of the Faculty of Pharmacy* 30: 39-50.
- Orjeda, G., and N.Y. Moore. 2001. IMTP Phase II Final Results: Response to *Fusarium* and stability of genotypes across environments. Pp. 164-173 in *Banana Fusarium Wilt Management: Towards Sustainable Cultivation*. International Workshop on the Banana Fusarium Wilt Disease, Genting Highlands Resort, Malaysia, 18-20 October 1999. INIBAP, Los Baños, Philippines.
- Ortiz, R. 1997a. Morphological variation in *Musa* germplasm. *Genetic Resources and Crop Evolution* 44: 393-404.
- Ortiz, R. 1997b. Occurrence and inheritance of $2n$ pollen in *Musa*. *Annals of Botany* 79: 449-453.
- Ortiz, R. 1997c. Secondary polyploids, heterosis, and evolutionary crop breeding for further improvement of the plantain and banana (*Musa* L. spp.) genome. *Theoretical and Applied Genetics* 94: 1113-1120.
- Ortiz, R. 2000. Understanding the *Musa* genome: An update. Proceedings of the First International Conference on Banana and Plantain for Africa, Kampala, Uganda, 14-18 October 1996. *Acta Horticulturae* 540: 157-168.
- Ortiz, R., and J.H. Crouch. 1997. The efficiency of natural and artificial pollinators in plantain (*Musa* spp. AAB group) hybridization and seed production. *Annals of Botany* 80: 693-695.
- Ortiz, R., and D.R. Vuylsteke. 1994a. Inheritance of albinism in banana and plantain (*Musa* spp.) and its significance in breeding. *HortScience* 29: 903-905.
- Ortiz, R., and D.R. Vuylsteke. 1994b. Inheritance of black Sigatoka disease resistance in plantain-banana (*Musa* spp.) hybrids. *Theoretical and Applied Genetics* 89: 146-152.
- Ortiz, R., and D. Vuylsteke. 1995. Factors influencing seed set in triploid *Musa* L. spp. and production of euploid hybrids. *Annals of Botany* 75: 151-155.
- Ortiz, R., and D. Vuylsteke. 1996. Recent advances in *Musa* genetics, breeding and biotechnology. *Plant Breeding Abstracts* 66: 1355-1363.
- Ortiz, R., and D. Vuylsteke. 1998a. PITA-14: A black Sigatoka-resistant tetraploid plantain hybrid with virus tolerance. *HortScience* 33: 360-361.
- Ortiz, R., and D. Vuylsteke. 1998b. Segregation of bunch orientation in plantain and banana hybrids. *Euphytica* 101: 79-82.
- Ortiz, R., R.S.B. Ferris and D.R. Vuylsteke. 1995a. Banana and plantain breeding. Pp. 110-145 in S. Gowen, ed., *Bananas and Plantains*. Chapman & Hall, London, UK.
- Ortiz, R., J. Okoro, R. Apanisile and K. Craenen. 1995b. Preliminary yield assessment of *Musa* hybrids under low organic matter input. *MUSAfrica* 7: 15-17.
- Ortiz, R., F. Ulburghs and J.U. Okoro. 1998a. Seasonal variation of apparent male fertility and $2n$ pollen production in plantain and banana. *HortScience* 33: 146-148.

- Ortiz, R., D. Vuylsteke, H. Crouch and J. Crouch. 1998b. TM3x: Triploid black Sigatoka-resistant *Musa* hybrid germplasm. *HortScience* 33: 362-365.
- Ortiz-Vázquez, E., D. Kaemmer, H.-B. Zhang, J. Muth, M. Rodríguez-Mendiola, C. Arias-Castro and A. James. 2005. Construction and characterization of a plant transformation-competent BIBAC library of the black Sigatoka-resistant banana *Musa acuminata* cv. Tuu Gia (AA). *Theoretical and Applied Genetics* 110: 706-713.
- Oselebe, H.O., A. Tenkouano, M. Pillay, I.U. Obi and M.I. Uguru. 2006. Ploidy and genome segregation in *Musa* breeding populations assessed by flow cytometry and randomly amplified polymorphic DNA markers. *Journal of the American Society for Horticultural Science* 131: 780-786.
- Osuji, J.O., B.E. Okoli and H.O. Edeoga. 2006. Karyotypes of the A and B genomes of *Musa* L. *Cytologia* 71: 21-24.
- Padmanaban, B., and S. Sathiamoorthy. 2001. The Banana Stem Weevil *Odoiporus longicollis*. *Musa* Pest Fact Sheet No. 5. INIBAP, Montpellier, France. 4 pp.
- Panis, B., A. Van Wauwe and R. Swennen. 1993. Plant regeneration through direct somatic embryogenesis from protoplasts of banana (*Musa* spp.). *Plant Cell Reports* 12: 403-407.
- Pasberg-Gauhl, C. 1995. Development of black Sigatoka disease (*Mycosphaerella fijiensis*) on different banana and plantain clones propagated by rhizomes and shoot-tip culture in Costa Rica. Pp. 41-55 in *In Vitro* Mutation Breeding of Bananas and Plantains (E. Amano and R.L. Jarret, eds.). IAEA-TECDOC-800, Joint FAO/IAEA Division of Nuclear Techniques in Food and Agriculture, Vienna, Austria.
- Pavis, C., and L. Lemaire. 1996. Resistance of *Musa* germplasm to the banana borer weevil, *Cosmopolites sordidus* (Germar) (Coleoptera: Curculionidae). *InfoMusa* 5(2): 3-9.
- Pei, X.-W., S.-K. Chen, R.-M. Wen, S. Ye, J.-Q. Huang, Y.-Q. Zhang, B.-S. Wang, Z.-X. Wang and S.-R. Jia. 2005. Creation of transgenic bananas expressing human lysozyme gene for Panama wilt resistance. *Journal of Integrative Plant Biology* 47: 971-977.
- Persley, G.J., and E.A. De Langhe, eds. 1987. Banana and Plantain Breeding Strategies. Proceedings of an International Workshop Held at Cairns, Australia, 13-17 October 1986. ACIAR Proceedings 21. Australian Centre for International Agricultural Research, Canberra. 187 pp.
- Photita, W., S. Lumyong, P. Lumyong, K.D. Hyde and E.H.C. McKenzie. 2002. Index of fungi described from the Musaceae. *Mycotaxon* 131: 491-503.
- Pietersen, G., and J.E. Thomas. 2003. Overview of *Musa* virus diseases. Pp. 50-60 in J.d'A. Hughes and B.O. Odu, eds., *Plant Virology in Sub-Saharan Africa*. Proceedings of a Conference, 4-8 June 2001, Ibadan. International Institute of Tropical Agriculture, Ibadan, Nigeria.
- Pillay, M., D.C. Nwakanma and A. Tenkouano. 2000. Identification of RAPD markers linked to A and B genome sequences in *Musa* L. *Genome* 43: 763-767.
- Pillay, M., A. Tenkouano, G. Ude and R. Ortiz. 2004. Molecular characterization of genomes in *Musa* and its applications. Pp. 271-286 in *Banana Improvement: Cellular, Molecular Biology, and Induced Mutations* (S.M. Jain and R. Swennen, eds.). Science Publishers, Enfield, New Hampshire, USA.

- Pillay, M., E. Ogundiwin, A. Tenkouano and J. Doležel. 2006. Ploidy and genome composition of *Musa* germplasm at the International Institute of Tropical Agriculture (IITA). *African Journal of Biotechnology* 5: 1224-1232.
- Ploetz, R.C. 2000. Panama disease: A classic and destructive disease of banana. *Plant Health Progress* doi:10.1094/PHP-2000-1204-01-HM (7 pp.).
- Ploetz, R.C. 2005a. Panama disease: An old nemesis rears its ugly head. Part 1, The beginnings of the banana export trades. *APSnet*, Feature Story, *Plant Health Progress*, doi:10.1094/PHP-2005-1221-01-RV (13 pp.).
- Ploetz, R.C. 2005b. Panama disease: An old nemesis rears its ugly head. Part 2, The Cavendish era and beyond. *APSnet*, Feature Story. <http://www.apsnet.org/online/feature/panama2/> (21 pp.).
- Ploetz, R.C. 2006. Fusarium wilt of banana is caused by several pathogens referred to as *Fusarium oxysporum* f. sp. *cubense*. *Phytopathology* 96: 653-656.
- Ploetz, R., and K. Pegg. 1997. Fusarium wilt of banana and Wallace's line: Was the disease originally restricted to his Indo-Malayan region? *Australasian Plant Pathology* 26: 239-249.
- Ploetz, R.C., J.E. Thomas and W.R. Slabaugh. 2003. Diseases of banana and plantain. Pp. 73-134 in R.C. Ploetz, ed., *Diseases of Tropical Fruit Crops*. CABI Publishing, Wallingford, UK.
- Pollefeys, P., S. Sharrock and E. Arnaud. 2004. Preliminary Analysis of the Literature on the Distribution of Wild *Musa* Species Using MGIS and DIVA-GIS. INIBAP, Montpellier, France. 65 pp.
- Rabie, E.C. 1991. Die Invloed van *Meloidogyne javanica* en *M. incognita* op die Voorkoms van Valspanamasiekte by Piesangs. M.Sc. Thesis, Potchefstroomse Universiteit vir Christelike Hoër Onderwys, Potchefstroom, South Africa. 106 pp.
- Raboin, L.-M., F. Carreel, J.-L. Noyer, F.-C. Baurens, J.-P. Horry, F. Bakry, H. Tezenas du Montcel, J. Ganry, C. Lanaud and P.J.L. Lagoda. 2005. Diploid ancestors of triploid export banana cultivars: Molecular identification of $2n$ restitution gamete donors and n gamete donors. *Molecular Breeding* 16: 333-341.
- Remy, S., A. Buyens, B.P.A. Cammue, R. Swennen and L. Sági. 1998a. Production of transgenic banana plants expressing antifungal proteins. First International Symposium on Banana in the Subtropics, Puerto de la Cruz, Tenerife, Spain. *Acta Horticulturae* 490: 433-436.
- Remy, S., I. François, B.P.A. Cammue, R. Swennen and L. Sági. 1998b. Co-transformation as a potential tool to create multiple and durable disease resistance in banana (*Musa* spp.). International Symposium on Biotechnology of Tropical and Subtropical Species, Part 2, Brisbane, Queensland, Australia. *Acta Horticulturae* 461: 361-366.
- Remy, S., I. Deconinck, R. Swennen and L. Sági. 1999. Development of a leaf disc assay to assess fungal tolerance in banana. Abstract p. 38, International Symposium on the Molecular & Cellular Biology of Banana, Boyce Thompson Institute, Ithaca, USA, 22-25 March 1999. Cornell University, Ithaca, New York. Abstract republished in *InfoMusa* 8(1), *PROMUSA* 3: xv.
- Reuveni, O., Y. Israeli, H. Degany and Y. Eshdat. 1986. Genetic Variability in Banana Plants Multiplied by *In Vitro* Techniques. Research Report AGPG, IBPGR/85/216. International Board for Plant Genetic Resources. 36 pp.

- Robinson, J.C. 1996. Bananas and Plantains. Crop Production Science in Horticulture No. 5. CABI Publishing, Wallingford, UK. vii + 238 pp.
- Rodrigo, V.H.L., C.M. Stirling, Z. Teklehaimanot and A. Nugawela. 1997. The effect of planting density on growth and development of component crops in rubber/banana intercropping systems. *Field Crops Research* 52: 95-108.
- Rosales, F.E., and L.E. Pocasangre. 2002. Mejoramiento convencional de banano y plátano: Estrategias y logros. Pp. 31-43 in XV Reunión Internacional ACORBAT 2002, Cartagena de Indias, Colombia: Memorias, Proceedings, Mémoires. Asociación de Bananeros de Colombia AUGURA, Medellín, Colombia.
- Ross, E.M. 1987. Musaceae. Pp. 16-19 in Flora of Australia, Volume 45: Hydatellaceae to Liliaceae (A.S. George, ed.). Bureau of Flora and Fauna, Australian Government Publishing Service, Canberra.
- Rout, G.R., S. Samantaray and P. Das. 2000. Biotechnology of the banana: A review of recent progress. *Plant Biology* 2: 512-524.
- Roux, N.S. 2004. Mutation induction in *Musa* – review. Pp. 23-32 in Banana Improvement: Cellular, Molecular Biology, and Induced Mutations (S.M. Jain and R. Swennen, eds.). Science Publishers, Enfield, New Hampshire, USA.
- Roux, N., F.-C. Baurens, J. Doležel, E. Hřibová, P. Heslop-Harrison, C. Town, T. Sasaki, T. Matsumoto, R. Aert, S. Remy, M. Souza and P. Lagoda. 2008. Genomics of banana and plantain (*Musa* spp.), major staple crops in the tropics. Pp. 83-111 in P.H. Moore and R. Ming, eds., Genomics of Tropical Crop Plants. Springer, New York.
- Rowe, P., and F. Rosales. 1989. La contribución de la FHIA a la seguridad alimentaria y a la sobrevivencia de la industria del banano. *Informe Mensual UPEB (Panama)* Año 13 (Nos. 88-89): 59-61.
- Rowe, P., and F. Rosales. 1993. Diploid breeding at FHIA and the development of Goldfinger (FHIA-01). *InfoMusa* 2(2): 9-11.
- Šafář, J., J.C. Noa-Carranza, J. Vrána, J. Bartoš, O. Alkhimova, X. Sabau, H. Šimková, F. Lheureux, M.-L. Caruana, J. Doležel and P. Piffanelli. 2004. Creation of a BAC resource to study the structure and evolution of the banana (*Musa balbisiana*) genome. *Genome* 47: 1182-1191.
- Sági, L., B. Panis, S. Remy, H. Schoofs, K. de Smet, R. Swennen and B.P.A. Cammue. 1995. Genetic transformation of banana and plantain (*Musa* spp.) via particle bombardment. *Bio/Technology* 13: 481-485.
- Sági, L., S. Remy and R. Swennen. 1998. Genetic transformation for the improvement of bananas – a critical assessment. Pp. 33-36 in Networking Banana and Plantain: INIBAP Annual Report 1997. INIBAP, Montpellier, France.
- Sági, L., S. Remy, B.P.A. Cammue, K. Maes, T. Raemaekers, H. Schoofs and R. Swennen. 2000. Production of transgenic banana and plantain. Proceedings of the First International Conference on Banana and Plantain for Africa, Kampala, Uganda, 14-18 October 1996. *Acta Horticulturae* 540: 203-206.
- Sahijram, L., J.R. Soneji and K.T. Bollamma. 2003. Analyzing somaclonal variation in micropropagated bananas (*Musa* spp.). *In Vitro Cellular and Developmental Biology – Plant* 39: 551-556.

- Sala, F., M.M. Rigano, A. Barbante, B. Basso, A.M. Walmsley and S. Castiglione. 2003. Vaccine antigen production in transgenic plants: Strategies, gene constructs and perspectives. *Vaccine* 21: 803-808.
- Sales, E.K., L.R. Carlos and R.R.C. Espino. 2001. Initiation of meristematic buds by benzyl amino purine on banana (*Musa* spp.) cultivars for somatic embryogenesis. *Philippine Agricultural Scientist* 84: 72-75.
- Salunkhe, D.K., and B.B. Desai. 1984. Postharvest Biotechnology of Fruits. CRC Press, Boca Raton, Florida, USA. 168 pp.
- Sannasgala, K., F.M. Dumortier and E.A. De Langhe. 1995. Somatic embryogenesis from *Musa* proliferating shoot tips: Histological details. Pp. 24-28 in *In Vitro* Mutation Breeding of Bananas and Plantains (E. Amano and R.L. Jarret, eds.). IAEA-TECDOC-800, Joint FAO/IAEA Division of Nuclear Techniques in Food and Agriculture, Vienna, Austria.
- Sarah, J.L., J. Pinochet and J. Stanton. 1996. The burrowing nematode of bananas, *Radopholus similis* Cobb, 1913. *Musa* Pest Fact Sheet No. 1. INIBAP, Montpellier, France. 2 pp.
- Sarma, R., S. Prasad and N.K. Mohan. 1995. Bhimkal, description and uses of a seeded edible banana of North Eastern India. *InfoMusa* 4(1): 8.
- Schoofs, H., B. Panis, H. Strosse, A. Mayo Mosqueda, J. López Torres, N. Roux, J. Doležel and R. Swennen. 1999. Bottlenecks in the generation and maintenance of morphogenic banana cell suspensions and plant regeneration via somatic embryogenesis therefrom. *InfoMusa* 8(2): 3-7.
- Sharrock, S. 1990. Collecting *Musa* in Papua New Guinea. Pp. 140-157 in Identification of Genetic Diversity in the Genus *Musa*. Proceedings of an International Workshop Held at Los Baños, Philippines, 5-10 September 1988 (R.L. Jarret, ed.). INIBAP, Montpellier, France.
- Sharrock, S. 1997. Uses of *Musa*. Pp.42-44 in Networking Banana and Plantain: INIBAP Annual Report 1996. INIBAP, Montpellier, France.
- Sharrock, S. 2001. Diversity in the genus *Musa*: Focus on *Australimusa*. Pp. 14-19 in Networking Banana and Plantain: INIBAP Annual Report 2000. INIBAP, Montpellier, France.
- Sharrock, S., and J. Engels. 1997. Complementary conservation. Pp. 6-9 in Networking Banana and Plantain: INIBAP Annual Report 1996. INIBAP, Montpellier, France.
- Shchukin, A., D. Ben-Bassat and Y. Israeli. 1997. Plant regeneration via somatic embryogenesis in Grand Nain banana and its effect on somaclonal variation. Third International Symposium on In Vitro Culture and Horticultural Breeding, Jerusalem, Israel. *Acta Horticulturae* 447: 317-318.
- Shepherd, K. 1974. Banana research at I.C.T.A. *Tropical Agriculture (Trinidad and Tobago)* 51: 482-490.
- Shepherd, K. 1990. Observations on *Musa* taxonomy. Pp. 158-165 in Identification of Genetic Diversity in the Genus *Musa*. Proceedings of an International Workshop Held at Los Baños, Philippines, 5-10 September 1988 (R.L. Jarret, ed.). INIBAP, Montpellier, France.
- Shepherd, K. 1999. Cytogenetics of the Genus *Musa*. INIBAP, Montpellier, France. 154 pp.
- Shigeta, M. 2002. The essence of African vegeculture: Ethnobotanical comparison of banana and ensete. *Asian and African Area Studies (Kyoto)* 2 : 44-69. (in Japanese)

- Silva, T. 2000. Musaceae. Pp. 246-251 in A Revised Handbook to the Flora of Ceylon, Volume 14 (M.D. Dassanayake, ed.). Oxford & IBH Publishing Co., New Delhi.
- Simmonds, N.W. 1956. Botanical results of the banana collecting expedition, 1954-5. *Kew Bulletin* 11: 463-489.
- Simmonds, N.W. 1962. The Evolution of the Bananas. Longman Group Ltd., London, UK. 170 pp.
- Simmonds, N.W. 1966/1973. Bananas, 2nd ed. Longmans, Green & Co., London, UK. 512 pp. / Los Plátanos, 2nd ed. Editorial Blume, Barcelona. 539 pp.
- Simmonds, N.W., and K. Shepherd. 1955. The taxonomy and origins of the cultivated bananas. *Journal of the Linnean Society of London, Botany* 55: 302-312.
- Simmonds, N.W., and S.T.C. Weatherup. 1990a. Numerical taxonomy of the cultivated bananas (*Musa*). *Tropical Agriculture (Trinidad and Tobago)* 67: 90-92.
- Simmonds, N.W., and S.T.C. Weatherup. 1990b. Numerical taxonomy of the wild bananas (*Musa*). *New Phytologist* 115: 567-571.
- Singh, D.B., P.V. Sreekumar, T.V.R.S. Sharma and A.K. Bandyopadhyay. 1998. *Musa balbisiana* var. *andamanica* (Musaceae) – a new banana variety from Andaman Islands. *Malayan Nature Journal* 52: 157-160.
- Smith, M.K., S.D. Hamill, P.W. Langdon and K.G. Pegg. 1993. Mutation breeding programme produces a plant with potential as a Fusarium wilt (race 4) resistant Cavendish variety. *Mutation Breeding Newsletter* 40: 4-5.
- Smole, W.J. 2002. Plantain (*Musa*) cultivation in pre-Columbian America: An overview of the circumstantial evidence. *Pre-Columbiana: A Journal of Long-Distance Contacts* 2(4): 269-296.
- Soguilon, C.E., L.V. Magnaye and M.P. Natural. 1995. Bugtok Disease of Banana. *Musa Disease Fact Sheet* No. 6. INIBAP, Montpellier, France. 2 pp.
- Soto, M.V. 1985. Bananos: Cultivo y Comercialización. Litografía e Imprenta LIL, San José, Costa Rica. 627 pp.
- Sotto, R.C., and R.C. Rabara. 2000. Morphological diversity of *Musa balbisiana* Colla in the Philippines. *InfoMusa* 9(2): 28-30.
- Ssebuliba, R., M. Magambo, D. Talengera, D. Makumbi, A. Tenkouano, P. Rubaihayo and M. Pillay. 2006a. Biological factors affecting seed production in East African Highland bananas. *Journal of Crop Improvement* 16: 67-79.
- Ssebuliba, R., D. Talengera, D. Makumbi, P. Namanya, A. Tenkouano, W. Tushemereirwe and M. Pillay. 2006b. Reproductive efficiency and breeding potential of East African Highland (*Musa* AAA-EA) bananas. *Field Crops Research* 95: 250-255.
- Ssebuliba, R.N., A. Tenkouano and M. Pillay. 2008. Male fertility and occurrence of $2n$ gametes in East African Highland bananas (*Musa* spp.). *Euphytica* 164: 53-62.

- Start, A.N., and A.G. Marshall. 1976. Nectarivorous bats as pollinators of trees in West Malaysia. Pp. 141-150 in J. Burley and S.T. Styles, eds., *Tropical Trees: Variation, Breeding and Conservation*. Academic Press, New York.
- Stover, R.H. 1987. Somaclonal variation in Grande Naine and Saba bananas in the nursery and field. *Banana and Plantain Breeding Strategies. Proceedings of an International Workshop Held at Cairns, Australia, 13-17 October 1986* (G.J. Persley and E.A. De Langhe, eds.). Australian Centre for International Agricultural Research, ACIAR Proceedings 21: 136-139.
- Stover, R.H., and I.W. Buddenhagen. 1986. Banana breeding: Polyploidy, disease resistance and productivity. *Fruits (France)* 41: 175-191.
- Stover, R.H., and N.W. Simmonds. 1987. *Bananas*, 3rd ed. Longman Scientific & Technical, Harlow, Essex, England, UK. 468 pp.
- Su, H.-J., L.-Y. Tsao, M.-L. Wu and T.-H. Hung. 2003. Biological and molecular categorization of strains of banana bunchy top virus. *Journal of Phytopathology* 151: 290-296.
- Sundararaj, D., and G. Balasubramanyam. 1971. Occurrence of *Musa ornata* Roxb. in South India. *Kew Bulletin* 25: 331-333.
- Sunil Kumar, G.B., T.R. Ganapathi, C.J. Revathi, L. Srinivas and V.A. Bapat. 2005. Expression of hepatitis B surface antigen in transgenic banana plants. *Planta* 222: 484-493.
- Swangpol, S., H. Volkaert, R.C. Sotto and T. Seelanan. 2007. Utility of selected non-coding chloroplast DNA sequences for lineage assessment of *Musa* interspecific hybrids. *Journal of Biochemistry and Molecular Biology* 40: 577-587.
- Swennen, R. 1990. Limits of morphotaxonomy: Names and synonyms of plantains in Africa and elsewhere. Pp. 172-210 in *Identification of Genetic Diversity in the Genus Musa. Proceedings of an International Workshop Held at Los Baños, Philippines, 5-10 September 1988* (R.L. Jarret, ed.). INIBAP, Montpellier, France.
- Swennen, R., I. van den Houwe, S. Remy, L. Sági and H. Schoofs. 1998. Biotechnological approaches for the improvement of Cavendish bananas. *First International Symposium on Banana in the Subtropics, Puerto de la Cruz, Tenerife, Spain. Acta Horticulturae* 490: 415-423.
- Tan, Y.P., Y.W. Ho, C. Mak and R. Ibrahim. 1993. FATOM-1 – an early flowering mutant derived from mutation induction of Grand Nain, a Cavendish banana. *Mutation Breeding Newsletter* 40: 5-6.
- Tang, C.-Y., and S.-C. Hwang. 1998. Selection and asexual inheritance of a dwarf variant of Cavendish banana resistant to race 4 of *Fusarium oxysporum* f. sp. *cubense*. *Australian Journal of Experimental Agriculture* 38: 189-194.
- Tang J.-W., Shi J.-P., Zhang G.-M., Bai K.-J., Guo X.-M., Zhu S.-Z., Duan W.-G., Song J.-P., Dao J.-H. and Huang J.-G. 2003. Successional dynamics and structure characteristics of pioneer *Musa acuminata* Colla communities in Xishuangbanna, Yunnan. *Biodiversity Science* 11: 37-46. (in Chinese)
- Tang Z.-H., Cao M., Sheng L.-X., Liang B. and Zhang S.-Y. 2005. Fruit consumption and seed dispersal of wild banana *Musa acuminata* by short-nosed fruit bat *Cynopterus sphinx*. *Acta Zoologica Sinica* 51: 608-615. (in Chinese)

- Tenkouano, A., J.H. Crouch, H.K. Crouch and D. Vuylsteke. 1998. Ploidy determination in *Musa* germplasm using pollen and chloroplast characteristics. *HortScience* 33: 889-890.
- Tezenas du Montcel, H. 1985/1987. Le Bananier Plantain. Maisonneuve et Larose, Paris. 144 pp. / Plantain Bananas. Macmillan Publishers, London. 112 pp.
- Tezenas du Montcel, H. 1990. *M. acuminata* subspecies *banksii*: Status and diversity. Pp. 211-218 in Identification of Genetic Diversity in the Genus *Musa*. Proceedings of an International Workshop Held at Los Baños, Philippines, 5-10 September 1988 (R.L. Jarret, ed.). INIBAP, Montpellier, France.
- Tezenas du Montcel, H., F. Bakry and J.-P. Horry. 1994. Breeding for the improvement of banana and plantain. Pp. 27-30 in Banana and Plantain Breeding: Priorities and Strategies. Proceedings of the First Meeting of the *Musa* Breeders' Network, Held in La Lima, Honduras, 2-3 May 1994. INIBAP, Montpellier, France.
- Thomas, J.E., and L.V. Magnaye. 1996. Banana Bract Mosaic Disease. *Musa* Disease Fact Sheet No. 7. INIBAP, Montpellier, France. 1 p.
- Thomas, J.E., M.-L. Iskra-Caruana and D.R. Jones. 1994. Banana Bunchy Top Disease. *Musa* Disease Fact Sheet No. 4. INIBAP, Montpellier, France. 2 pp.
- Thomas, J.E., M.-L. Iskra-Caruana, L.V. Magnaye and D.R. Jones. 1999. Bract mosaic. Pp. 253-256 in D.R. Jones, ed., Diseases of Banana, Abacá and Enset. CABI Publishing, Wallingford, UK.
- Tixier, P., E. Malezieux and M. Dorel. 2004. SIMBA-POP: A cohort population model for long-term simulation of banana crop harvest. *Ecological Modelling* 180: 407-417.
- Tomekpé, K., E. Auboiron, P. Noupadja and E. Fouré. 2000. Plantain breeding at CRBP: Strategies, results and outlook. Proceedings of the First International Conference on Banana and Plantain for Africa, Kampala, Uganda, 14-18 October 1996. *Acta Horticulturae* 540: 177-183.
- Tomekpé, K., C. Jenny and J.-V. Escalant. 2004. A review of conventional improvement strategies for *Musa*. *InfoMusa* 13(2): 2-6.
- Tulmann Neto, A., E.T. Domingues, B.M.J. Mendes and A. Ando. 1989. *In vivo* methods for the induction of mutations in 'Maçã' banana improvement programs. *Revista Brasileira de Genética* 12: 871-880.
- Turner, D.W., J.A. Fortescue and D.S. Thomas. 2007. Environmental physiology of the bananas (*Musa* spp.). *Brazilian Journal of Plant Physiology* 19: 463-484.
- Turner, J., B. Mathew and M. Lock. 2002. *Musa basjoo*, Musaceae. *Curtis's Botanical Magazine* 19: 49-54.
- Ude, G., M. Pillay, D. Nwakanma and A. Tenkouano. 2002a. Analysis of genetic diversity and sectional relationships in *Musa* using AFLP markers. *Theoretical and Applied Genetics* 104: 1239-1245.
- Ude, G., M. Pillay, D. Nwakanma and A. Tenkouano. 2002b. Genetic diversity in *Musa acuminata* Colla and *Musa balbisiana* Colla and some of their natural hybrids using AFLP markers. *Theoretical and Applied Genetics* 104: 1246-1252.
- Uma, S., & I. Buddenhagen, ed. 2006. Farmers' Knowledge of Wild *Musa* in India. A0327/E, Plant Production and Protection Division, FAO, Rome. 55 pp.

- Uma, S., and S. Sathiamoorthy. 2002. Names and Synonyms of Bananas and Plantains of India. National Research Centre for Banana, Indian Council of Agricultural Research (ICAR), Tiruchirapalli, India. 62 pp.
- Uma, S., S.A. Siva, M.S. Saraswathi, P. Durai, T.V.R.S. Sharma, D.B. Singh, R. Selvarajan and S. Sathiamoorthy. 2005. Studies on the origin and diversification of Indian wild banana (*Musa balbisiana*) using arbitrarily amplified DNA markers. *Journal of Horticultural Science & Biotechnology* 80: 575-580.
- Uma, S., M.S. Saraswathi, P. Durai and S. Sathiamoorthy. 2006a. Diversity and distribution of section *Rhodochlamys* (genus *Musa*, Musaceae) in India and breeding potential for banana improvement programmes. *Plant Genetic Resources Newsletter* 146: 17-23.
- Uma, S., S.A. Siva, M.S. Saraswathi, M. Manickavasagam, P. Durai, R. Selvarajan and S. Sathiamoorthy. 2006b. Variation and intraspecific relationships in Indian wild *Musa balbisiana* (BB) population as evidenced by random amplified polymorphic DNA. *Genetic Resources and Crop Evolution* 53: 349-355.
- Umali, R.P., and I. Nakamura. 2003. Identification of dCAPS markers that discriminate A and B cytoplasms in banana (*Musa* spp.). *Plant Biotechnology* 20: 159-164.
- Valmayor, R.V. 2001/2001. Classification and characterization of *Musa exotica*, *M. alinsanaya* and *M. acuminata* ssp. *errans*. *Philippine Agricultural Scientist* 84: 325-331 / reprinted *InfoMusa* 10(2): 35-39.
- Valmayor, R.V., R.G. Davide, J.M. Stanton, N.L. Treverrow and V.N. Roa, eds. 1994. Banana Nematodes and Weevil Borers in Asia and the Pacific. Proceedings of a Conference-Workshop on Nematodes and Weevil Borers Affecting Bananas in Asia and the Pacific, Serdang, Selangor, Malaysia, 18-22 April 1994. INIBAP-ASPNET, Los Baños, Philippines. 258 pp.
- Valmayor, R.V., S.H. Jamaluddin, B. Silayoi, S. Kusumo, L.D. Dahn, O.C. Pascua and R.R.C. Espino. 2000a. Banana cultivar names and synonyms in Southeast Asia (A preliminary report). Pp. 55-66 in *Advancing Banana and Plantain R & D in Asia and the Pacific*. Proceedings of the 9th INIBAP-ASPNET Regional Advisory Committee Meeting, South China Agricultural University, Guangzhou, China, 2-5 November 1999 (A.B. Molina and V.N. Roa, eds.). INIBAP-ASPNET, Los Baños, Philippines.
- Valmayor, R.V., S.H. Jamaluddin, B. Silayoi, S. Kusumo, L.D. Dahn, O.C. Pascua and R.R.C. Espino. 2000b. Banana Cultivar Names and Synonyms in Southeast Asia. INIBAP, Montpellier, France. 28 pp.
- Valmayor, R.V., R.R.C. Espino and O.C. Pascua. 2002. *The Wild and Cultivated Bananas of the Philippines*. Philippine Agriculture and Resources Research Foundation, Los Baños. 242 pp.
- Valmayor, R.V., L.D. Dahn and M. Häkkinen. 2004. Rediscovery of *Musa splendida* A. Chevalier and description of two new species, *Musa viridis* and *Musa lutea*. *Philippine Agricultural Scientist* 87: 110-118.
- Valmayor, R.V., L.D. Dahn and M. Häkkinen. 2005. The wild and ornamental Musaceae of Vietnam with descriptions of two new traveling bananas. *Philippine Agricultural Scientist* 88: 236-244.

- van den Houwe, I., P. Lepoivre, R. Swennen, E.A. Frison and S. Sharrock. 2003. The world banana heritage conserved in Belgium for the benefit of small-scale farmers in the tropics. *Plant Genetic Resources Newsletter* 135: 18-23.
- Van Duren, M., R. Morpurgo, J. Doležel and R. Afza. 1996. Induction and verification of autotetraploids in diploid banana (*Musa acuminata*) by *in vitro* techniques. *Euphytica* 88: 25-34.
- Vansina, J. 2003. Bananas in Cameroon c. 500 BCE? Not proven. *Azania* 38: 174-176.
- Viaene, N., L.F. Durán, J.M. Rivera, J. Dueñas, P. Rowe and D. De Waele. 2003. Responses of banana and plantain cultivars, lines and hybrids to the burrowing nematode *Radopholus similis*. *Nematology* 5: 85-98.
- Vilarinhos, A., P. Piffanelli, P. Lagoda, S. Thibivilliers, X. Sabau, F. Carreel and A. D'Hont. 2003. Construction and characterization of a bacterial artificial chromosome library of banana (*Musa acuminata* Colla). *Theoretical and Applied Genetics* 106: 1102-1106.
- Viljoen, A., K. Kunert, A. Kiggundu and J.V. Escalant. 2004. Biotechnology for sustainable banana and plantain production in Africa: The South African contribution. *South African Journal of Botany* 70: 67-74.
- Von Mende, N., P. Burrows and J. Bridge. 1993. Molecular aspects of resistance to nematodes. Pp. 125-127 in Proceedings of the Workshop on Biotechnology Applications for Banana and Plantain Improvement, San José, Costa Rica. INIBAP, Montpellier, France.
- Voris, H.K. 2000. Maps of Pleistocene sea levels in Southeast Asia: Shorelines, river systems and time durations. *Journal of Biogeography* 27: 1153-1167.
- Vrydaghs, L., R. Swennen, C. Mbida M., H. Doutrelepont, E.A. De Langhe and P. de Maret. 2003. The banana phytolith as a direct marker of early agriculture: A review of the evidence. Pp. 177-185 in D.M. Hart and L.A. Wallis, eds., Phytolith and Starch Research in the Australian-Pacific-Asian Regions: The State of the Art. Pandanus Books, Canberra.
- Vu, T., R. Hauschild and R.A. Sikora. 2006. *Fusarium oxysporum* endophytes induced systemic resistance against *Radopholus similis* on banana. *Nematology* 8: 847-852.
- Vuylsteke, D.R. 1989. Shoot-tip Culture for the Propagation, Conservation and Exchange of *Musa* Germplasm. Practical Manuals for Handling Crop Germplasm *In Vitro* 2. International Board for Plant Genetic Resources, Rome. vii + 56 pp.
- Vuylsteke, D., and R. Ortiz. 1995. Plantain-derived diploid hybrids (TMP2x) with black Sigatoka resistance. *HortScience* 30: 147-149.
- Vuylsteke, D., R. Swennen and E. De Langhe. 1991. Somaclonal variation in plantains (*Musa* spp. AAB group) derived from shoot-tip culture. *Fruits (France)* 46: 429-439.
- Vuylsteke, D., R. Ortiz and S. Ferris. 1993a. Genetic and agronomic improvement for sustainable production of plantain and banana in sub-Saharan Africa. *African Crop Science Journal* 1: 1-8.
- Vuylsteke, D., R. Swennen and R. Ortiz. 1993b. Development and performance of black Sigatoka-resistant tetraploid hybrids of plantain (*Musa* spp., AAB group). *Euphytica* 65: 33-42.

- Vuylsteke, D., R. Swennen and R. Ortiz. 1993c. Registration of 14 improved tropical *Musa* plantain hybrids with black Sigatoka resistance. *HortScience* 28: 957-959.
- Vuylsteke, D.R., R. Ortiz, C. Pasberg-Gauhl, F. Gauhl, C. Gold, S. Ferris and P. Speijer. 1993d. Plantain and banana research at the International Institute of Tropical Agriculture. *HortScience* 28: 874-971.
- Vuylsteke, D., R. Ortiz, S. Ferris and R. Swennen. 1995. PITA-9: A black Sigatoka-resistant hybrid from the False Horn plantain gene pool. *HortScience* 30: 395-397.
- Wang, X.-L., T.-Y. Chiang, N. Roux, G. Hao and X.-J. Ge. 2007. Genetic diversity of wild banana (*Musa balbisiana* Colla) in China as revealed by AFLP markers. *Genetic Resources and Crop Evolution* 54: 1125-1132.
- Waskar, D.P., and S.K. Roy. 1996. Methods adopted for extending the shelf life of banana fruit – a review. *Agricultural Reviews Karnal* 17: 132-138.
- Wattanachaiyingcharoen, D., T. Boonkerd, K. Therakhupt and S. Kangkun. 2004. Morphological classification of *Musa acuminata* Colla in lower northern Thailand. Page 4 in 1st International Congress on *Musa*: Harnessing Research to Improve Livelihoods, 6-9 July 2004, Penang, Malaysia. INIBAP, Montpellier, France.
- Winkelmann, J.R., F.J. Bonaccorso and T.L. Strickler. 2000. Home range of the southern blossom bat, *Syconycteris australis*, in Papua New Guinea. *Journal of Mammalogy* 81: 408-414.
- Winkelmann, J.R., F.J. Bonaccorso, E.E. Goedeke and L.J. Ballock. 2003. Home range and territoriality in the least blossom bat, *Macroglossus minimus*, in Papua New Guinea. *Journal of Mammalogy* 84: 561-570.
- Wong, C., R. Kiew, J.P. Loh, L.H. Gan, Ohn Set, S.K. Lee, S. Lum and Y.Y. Gan. 2001a. Genetic diversity of the wild bannana *Musa acuminata* Colla in Malaysia as evidenced by AFLP. *Annals of Botany* 88: 1017-1025.
- Wong, C., R. Kiew, A. Lamb, Ohn Set, S.K. Lee, L.H. Gan and Y.Y. Gan. 2001b. Sectional placement of three Bornean species of *Musa* (Musaceae) based on amplified fragment length polymorphism (AFLP). *Gardens' Bulletin Singapore* 53: 327-341.
- Wong, C., R. Kiew, G. Argent, Ohn Set, S.K. Lee and Y.Y. Gan. 2002. Assessment of the validity of the sections in *Musa* (Musaceae) using AFLP. *Annals of Botany* 90: 231-238.
- Wong, C., G. Argent, R. Kiew, Ohn Set and Y.Y. Gan. 2003. The genetic relations of *Musa* species from Mount Jaya, New Guinea, and a reappraisal of the sections of *Musa* (Musaceae). *Gardens' Bulletin Singapore* 55: 97-111.
- Woodruff, D.S. 2003. Neogene marine transgressions, palaeogeography and biogeographic transitions on the Thai-Malay Peninsula. *Journal of Biogeography* 30: 551-567.
- Wu, D. [Wu, T.-l.], and W.J. Kress. 2000. Musaceae. Pp. 297-313 in Flora of China, Volume 24: Flagellariaceae through Marantaceae (Z. Wu, P.H. Raven and Flora of China Editorial Committee, eds.). Science Press, Beijing, and Missouri Botanical Garden Press, St. Louis.
- WWF and IUCN. 1995. Centres of Plant Diversity: Volume 2, Asia, Australasia and the Pacific. IUCN Publications Unit, Cambridge, England, UK. 578 pp.

Ying, S.-S. 2000. Musaceae. Pp. 704-706 in T.-C. Huang and Editorial Committee of the Flora of Taiwan, eds., Flora of Taiwan, 2nd ed., vol. 5. Department of Botany, National Taiwan University, Taipei.

Zeller, F.J. 2005. Herkunft, Diversität und Züchtung der Banane und kultivierter Zitrusarten. I. Die Banane (*Musa* spp.). *Journal of Agriculture and Rural Development in the Tropics and Subtropics*, Supplement 81: 1-42.