

For Official Use

DEV/DOC(2010)8

Organisation de Coopération et de Développement Économiques
Organisation for Economic Co-operation and Development

25-Aug-2010

English - Or. English

DEVELOPMENT CENTRE

Working Paper No. 291

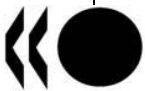
**FISCAL POLICY IN LATIN AMERICA:
COUNTERCYCLICAL AND SUSTAINABLE AT LAST?**

By Christian Daude, Ángel Melguizo and Alejandro Neut

Declassified

JT03287495

Document complet disponible sur OLIS dans son format d'origine
Complete document available on OLIS in its original format



DEV/DOC(2010)8
For Official Use

English - Or. English

DEVELOPMENT CENTRE WORKING PAPERS

This series of working papers is intended to disseminate the Development Centre's research findings rapidly among specialists in the field concerned. These papers are generally available in the original English or French, with a summary in the other language.

Comments on this paper would be welcome and should be sent to the OECD Development Centre, 2 rue André Pascal, 75775 PARIS CEDEX 16, France; or to dev.contact@oecd.org. Documents may be downloaded from: <http://www.oecd.org/dev/wp> or obtained via e-mail (dev.contact@oecd.org).



THE OPINIONS EXPRESSED AND ARGUMENTS EMPLOYED IN THIS DOCUMENT ARE THE SOLE RESPONSIBILITY OF THE AUTHORS AND DO NOT NECESSARILY REFLECT THOSE OF THE OECD OR OF THE GOVERNMENTS OF ITS MEMBER COUNTRIES

©OECD (2010)

Applications for permission to reproduce or translate all or part of this document should be sent to rights@oecd.org

CENTRE DE DÉVELOPPEMENT DOCUMENTS DE TRAVAIL

Cette série de documents de travail a pour but de diffuser rapidement auprès des spécialistes dans les domaines concernés les résultats des travaux de recherche du Centre de développement. Ces documents ne sont disponibles que dans leur langue originale, anglais ou français ; un résumé du document est rédigé dans l'autre langue.

Tout commentaire relatif à ce document peut être adressé au Centre de développement de l'OCDE, 2 rue André Pascal, 75775 PARIS CEDEX 16, France; ou à dev.contact@oecd.org. Les documents peuvent être téléchargés à partir de: <http://www.oecd.org/dev/wp> ou obtenus via le mél (dev.contact@oecd.org).



LES IDÉES EXPRIMÉES ET LES ARGUMENTS AVANCÉS DANS CE DOCUMENT SONT CEUX DES AUTEURS ET NE REFLÈTENT PAS NÉCESSAIREMENT CEUX DE L'OCDE OU DES GOUVERNEMENTS DE SES PAYS MEMBRES

©OCDE (2010)

Les demandes d'autorisation de reproduction ou de traduction de tout ou partie de ce document devront être envoyées à rights@oecd.org

TABLE OF CONTENTS

ACKNOWLEDGEMENTS.....	4
PREFACE	5
RÉSUMÉ.....	6
ABSTRACT	7
I. INTRODUCTION.....	8
II. CYCLICALLY ADJUSTED BUDGET BALANCES IN LATIN AMERICA.....	10
III. ESTIMATION OF OUTPUT GAP	31
IV. CONCLUSIONS AND POLICY IMPLICATIONS.....	36
APPENDIX.....	37
REFERENCES.....	45
OTHER TITLES IN THE SERIES/ AUTRES TITRES DANS LA SÉRIE.....	47

ACKNOWLEDGEMENTS

This paper was prepared for the 12th Banca d'Italia *Workshop on Fiscal Policy: Lessons from the Crisis*, Perugia 25-27 March 2010. We would like to thank the comments by participants, as well as participants at the ECLAC XXII *Seminario regional de política fiscal*, Santiago de Chile 26-29 January 2010, the IDB Meeting of Budget Officials in Lima, 5-7 May 2010, and the IDB's seminar on *Preconditions for Establishing Fiscal Rules Based on Structural Balances* in Washington DC, 28-29 June 2010.

Comments and discussion by Eduardo Fernández-Arias, Davide Furceri, Gustavo García, Martin Larch, Mario Marcel, Ricardo Martner, Teresa Ter-Minassian, and Helmut Reisen were particularly helpful. We would like to thank Christophe André, Alberto Barreix, Bert Brys, Barbara Castelletti, Hamlet Gutierrez and Ricardo Martner, as well as officials from the Ministries of Finance of Chile and Uruguay for providing some of the data. Gwenn Parent provided excellent research assistance.

Financial support from the Fundación Internacional y para Iberoamérica de Administración y Políticas Públicas (FIIAPP) and the Spanish Agency for International Development Cooperation (AECID) are gratefully acknowledged. The views expressed herein are the sole responsibility of the authors and do not necessarily reflect the opinions of their institution.

PREFACE

Many analysts suggested that Latin America has faced the crisis in a much better macroeconomic position than in the past. Budget balances were positive, debt-to-GDP ratios were low, and monetary policy was more credible thanks to low inflation and well-anchored expectations. Moreover, in contrast with the past, some of the countries in the region were able to enact fiscal stimulus packages comparable to those of OECD countries. Is Latin America's new resilience a permanent change? Some questions may require time to be responded, such as the effectiveness of counter-cyclical fiscal impulses. But some may be responded right now, particularly the cyclical or structural nature of recent fiscal improvements.

This paper by Christian Daude, Ángel Melguizo and Alejandro Neut, economists of the OECD Development Centre, contributes to this relevant debate: fiscal solvency is a precondition for sustainable development policies, and the ability to have a counter-cyclical policy is an important tool to support the poor and vulnerable during downturns. The paper analyses fiscal policy in the main economies in Latin America during the last two decades. It uses the OECD methodology to measure structural balances, but it also takes into account the central role that commodities play in several countries in the region. All in all, underneath the observed positive indicators, the analysis of cyclically-adjusted balances and debt sustainability confirms that most countries were in better position before the crisis. However, tax automatic stabilisers in Latin America are still small, around half the OECD average. Concerning discretionary fiscal impulses, they continue to be broadly pro-cyclical, but in some countries policy response to the last cycle has been more stabilising. Finally, the authors document a great degree of uncertainty concerning output gap estimates in Latin America which – combined with wide commodity cycles – add an extra layer of complexity for policy makers in the region.

This paper is elaborated within the Fiscal pillar of the LAC-OECD Initiative "Fiscal Policy: Improving Taxation and Public Expenditure", a joint project of the Centre for Tax Policy and Administration and the Development Centre, supported by Spain, Chile and Mexico. We hope that this working paper will contribute to a better informed debate on fiscal policy, helping ultimately to improve the wellbeing of the people in Latin America.

Mario Pezzini

Director

OECD Development Centre

July 2010

RÉSUMÉ

Cette étude analyse la politique budgétaire dans huit économies d'Amérique Latine, à partir du début des années 1990 et jusqu'à 2009. Nous étudions les estimations des composantes structurelles et cyclique des recettes publiques en l'Argentine, le Brésil, le Chili, la Colombie, le Costa Rica, le Mexique, le Pérou et l'Uruguay, en utilisant la méthodologie de l'OCDE, et en ajoutant l'effet des prix des matières premières, qui ont un impact significatif sur le solde budgétaire en Amérique Latine. A partir de ces résultats, l'étude évalue l'ampleur des stabilisateurs automatiques, et l'établissement de la politique budgétaire discrétionnaire. Finalement, nous soulignons l'incertitude de l'estimation de l'écart de production en raison des larges chocs cycliques, temporaires et permanents dans plusieurs économies d'Amérique Latine.

Classification JEL: E62; H30; H60

Mots clé: Politique budgétaire, cycle économique, finances publiques

ABSTRACT

This paper analyses fiscal policy for several economies in Latin America, from the early nineties to the 2009 crisis. We present original estimates of cyclically-adjusted public revenues for Argentina, Brazil, Chile, Colombia, Costa Rica, Mexico, Peru and Uruguay implementing the standardised OECD methodology and extending it to include commodity cycles, which have a direct and significant effect on the fiscal balance of several Latin American countries. Based on these estimates, we evaluate the size of automatic tax stabilisers and the cyclicity of discretionary fiscal policy. Additionally, we highlight the uncertainty stemming from the estimation of the output gap, due to large and simultaneous cyclical, temporary and permanent shocks in several Latin American economies.

JEL Classification: E62; H30; H60

Keywords: fiscal policy, business cycle, public finances

I. INTRODUCTION

In reaction to the 2009 global financial crisis, most industrialised and several emerging economies enacted Keynesian-type fiscal packages (from personal income tax cuts and indirect taxes reductions, to higher infrastructure spending and transfers to local governments, families, and firms) to mitigate the collapse of domestic demand.

Several Latin American economies faced the international crisis on relatively solid domestic macroeconomic grounds, both monetary and fiscal. On the fiscal front, most countries in the region displayed higher budget surpluses and lower debt-to-GDP levels, giving them apparently unprecedented fiscal margins to pursue sustainable counter-cyclical fiscal policies, of a similar size of those in OECD countries (see OECD, 2009b)¹.

But, is Latin America's resilience in 2009 a permanent change in paradigm? The success of these counter-cyclical fiscal policy responses in Latin American economies is still unclear, and will largely depend on both the size of the programmes actually implemented (generally smaller and with greater lags than announced) and their effective impact (opening, once again, the debate on multipliers). Besides, at the wake of the international financial crisis there was no consensus on the cyclical or structural nature of still recent fiscal improvements².

Our paper joins the latter debate. In section two we present updated original estimates of cyclically-adjusted fiscal balances for a number of Latin American countries: Argentina, Brazil, Chile, Colombia, Costa Rica, Mexico, Peru and Uruguay. We track these balances since the early nineties to 2009, implementing the standardised OECD methodology (Girouard and André, 2005, and Van den Noord, 2000), but adding the fiscal impact of commodity prices (following basically the IMF approach in Vladkova and Zettelmeyer, 2008). With these estimates, we can then measure the size of automatic stabilisation tax policies and the size and cyclicity of discretionary fiscal policy. These measures are compared with those in OECD countries and used to discuss

¹ This strength was in stark contrast with previous episodes. See Gavin and Perotti (1997) and Gavin and Hausmann (1008) for Latin America, and Talvi and Vegh (2005), Kaminsky *et al.* (2006), and Ilzetzki and Vegh (2008) for emerging markets in general.

² Izquierdo and Talvi (2008), from the Inter-American Development Bank, argued that if revenues from the seven largest economies in Latin America countries were adjusted using the implicit Hodrick-Prescott filter parameter for Chile (i.e. the smoothing coefficient on revenues that would render a structural surplus of one per cent of GDP since 2001), structural fiscal balances in the region, with the exception of Chile, did not differ significantly from their situation at the onset of the 1998 Russian crisis. Using a different methodological approach, Vladkova-Hollar and Zettelmeyer (2008), from the International Monetary Fund, observed an improvement in structural balances in most countries, although they point out that commodity prices added a significant layer of uncertainty.

the cyclical nature of discretionary fiscal policy in the region, differentiating countries and periods. Additionally, based on these numbers we perform standard debt sustainability exercises. The third section explains the methodology used to estimate the output gap. We opt for an unobserved components model to decompose shocks into permanent, cyclical and transitory. Section four concludes, underlining the importance of output gap estimates, the inclusion of commodity prices and the consideration of automatic fiscal responses in the design of sustainable fiscal policies over the business cycle in the region.

II. CYCLICALLY ADJUSTED BUDGET BALANCES IN LATIN AMERICA

II.1. OECD approach to estimation of cyclically-adjusted fiscal revenues

As a starting point, we apply the OECD approach to account for the automatic impact of the business cycle on public accounts, as presented in detail by Girouard and Andre (2005) for OECD countries, and De Mello and Moccero (2006) for Brazil. This method computes separately the cyclical component of unemployment-related transfers and of public receipts from four types of taxes: personal income tax (PIT), social security contributions (SSC), and corporate income tax (CIT), and indirect taxes (IT), and of unemployment-related transfers.

Focusing on public revenues, the cyclical response of tax i to the business cycle (labelled $\varepsilon_{ti,y}$) is calculated as the product of two elasticities: the elasticity of tax receipts to the tax base (labelled $\varepsilon_{ti,tbi}$) and the elasticity of the tax base to the economic cycle (labelled $\varepsilon_{tbi,y}$):

$$\varepsilon_{ti,y} = \varepsilon_{ti,tbi} \times \varepsilon_{tbi,y} \quad (1)$$

where i covers the four taxes mentioned above (PIT, SSC, CIT or IT) or their respective tax bases (wage bill for the first two, corporate profits and consumption).

On the expenditure side, the adjustment is usually made at the level of total primary spending as time-series data on unemployment-related expenditure are not available across countries. Girouard and Andre (2005) use several OECD instruments, publications and databases, especially the *Annual National Accounts*, the *Economic Outlook* database, national *Labour Force Surveys*, the *Taxing Wages* model, and *Revenue Statistics*. Next, we describe the methodology more in depth while explaining the approach we follow for Latin American economies.

Personal income tax and social security contributions

To calculate the elasticity of income tax and social security contributions with respect to the tax base, the marginal and the average tax rates of a representative household are calculated for several points in the earnings distribution: from 0.5 to 3.0 times the average production worker in each OECD country. A representative household is defined as a full-time, two-earner married couple with two children, with the secondary earner receiving 50 per cent of the wage of the principal earner. Effective tax rates are computed using the OECD *Taxing Wages* simulator, while the distribution of tax payers across income levels in each country are based on labour market statistics (based on median, first and ninth deciles incomes taken from *Labour Force Surveys*). The overall elasticities of both PIT and SSC with respect to the tax base ($\varepsilon_{ti,tbi}$) are calculated as the weighted ratios of marginal and average tax rates:

$$\varepsilon_{t,th_i} = \left(\sum_{i=1}^n \gamma_i MA_i \right) / \left(\sum_{i=1}^n \gamma_i AV_i \right) \quad (2)$$

where γ_i is the share of earners i in the income distribution, MA_i is the marginal income tax rate or social security contribution rate at earning level i , and AV_i stands for the corresponding average rate.

Due to the lack of comparable databases and instruments, this procedure poses significant challenges when applying them to Latin America. We proxy the distribution of potential tax payers using the latest available National Household Surveys³ in Argentina (referred to 2006), Brazil (2006)⁴, Chile (2006), Colombia (2008), Costa Rica (2006), Mexico (2006), Peru (2006), and Uruguay (2005). In particular, we calculate the ‘adjusted first earner income’ distribution taking into account household composition (if two earners exist, the first earner is assigned two thirds of household income while second earner is assigned the rest). We restrict our analysis to labour income (dependent and self-employed workers)⁵, and limit the sample to households with at least some labour income⁶. Given the high levels of informality and income inequality in the region, we analyze an extended income interval, covering from 0.05 times average income (i.e. almost from the first peso/sol/real of labour income) to more than six times average income.

Figure 1 represents the average adjusted income level and those corresponding to the first and ninth deciles, corrected by purchasing power parities. Average annual labour income level ranges from 7.700 \$ PPP in Peru, to nearly 14.600 \$ PPP in Chile. Workers in the ninth decile earn more than twice the average in all countries, while low earners vary significantly (in Peru, those in the first decile earn 20 times less than the average income, while only five times less in Costa Rica).

³ *Encuesta Permanente de Hogares* in Argentina, *Pesquisa Nacional por Amostra de Domicílios* in Brazil, *Encuesta de Caracterización Socioeconómica Nacional* in Chile, *Gran Encuesta Integrada de Hogares* in Colombia, *Encuesta de Hogares y Propósitos Múltiples* in Costa Rica, *Encuesta Nacional de Ocupación y Empleo* in Mexico, *Encuesta Nacional de Hogares* in Peru and *Encuesta Continua de Hogares* in Uruguay. We are aware of the potential limitations from using survey data, in contrast to administrative records, but, on the other hand, household surveys are more generally available. As a future extension of this research, we will test the robustness of the results using alternative income distribution sources.

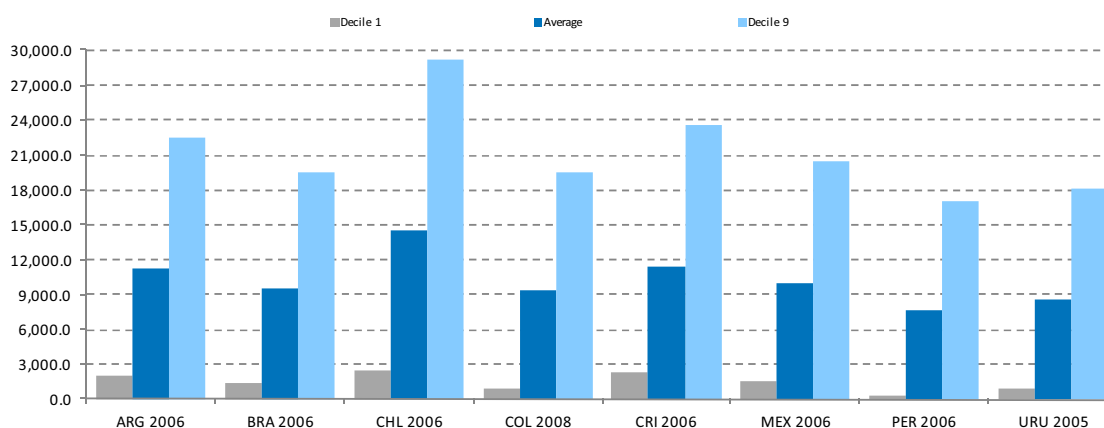
⁴ Brazil is included to establish a link between previous OECD research and our regional analysis. In the following sections we will report analysis based on elasticities calculated by De Mello and Moccero (2006).

⁵ As already established in the OECD method, this does not represent a significant bias for Latin America, since capital income is usually not taxed by the personal income tax.

⁶ According to our calculations based on the National Household Surveys, between 8 and 26 per cent of households in the selected Latin American countries do report no labour income (26.1 in Argentina, 15.6 in Brazil, 11.4 in Chile, 11.5 in Colombia, 15.0 in Costa Rica, 7.7 in Mexico, 9.2 in Peru, and 22.0 in Uruguay).

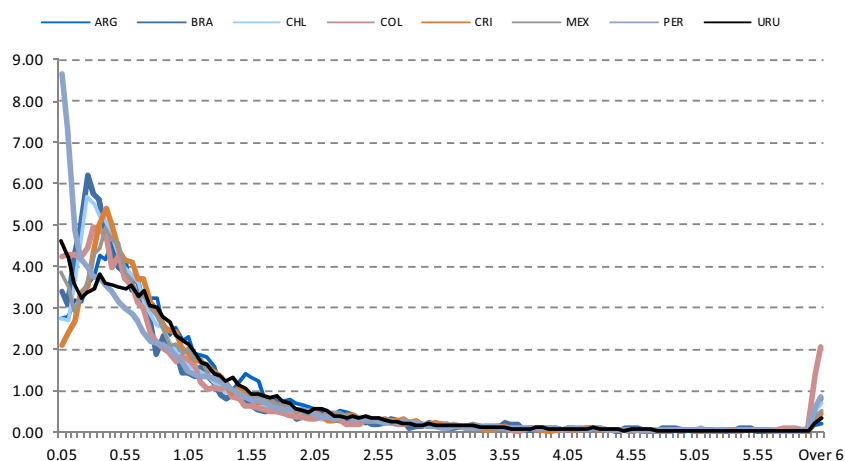
Focusing on the distribution of labour income earners, the analysis shows a high concentration of workers below the average labour income: between 60 and 70 per cent of labour income earners earn less than the national average (Figure 2). The Peruvian income distribution represents an outlier, given the concentration of income earners at lower levels. This fact has a very significant impact on the number of effective tax payers and fiscal revenues.

Figure 1. Adjusted first earner annual labour income (PPP dollars)



Source: Authors' calculations based on National Household Surveys

Figure 2. Labour income distribution in Latin American countries (Percentage)



Note: Percentage of people by household labour income level. 1 represents the national average

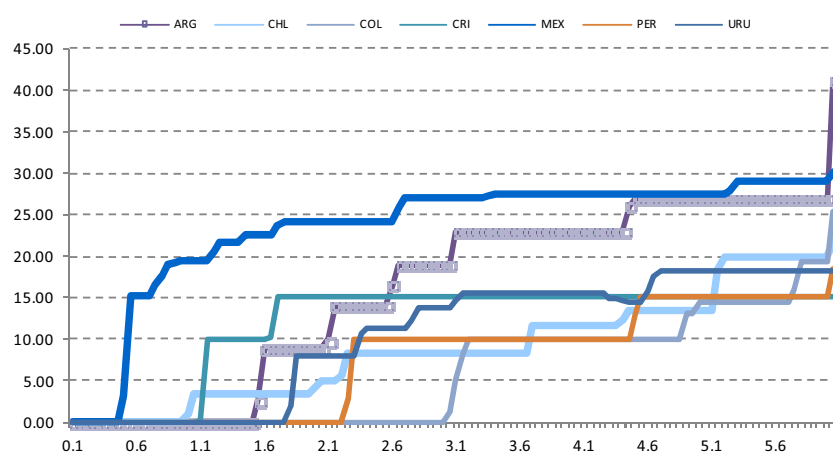
Source: Authors' calculations based on National Household Surveys

These national labour income distributions provide the weights (γ_i) to compute the overall average and marginal personal income and social security tax rates. We calculate the effective tax

burden for representative households, assuming they only differ in their income level (from 0.05 to more than 6 times the national average)⁷. Chilean and Uruguayan figures were provided by the respective Ministries of Finance, while Mexican rates were calculating using the OECD *Taxing Wages* simulator. For other countries, we calculated the fiscal figures based on the legislation in place during the corresponding fiscal year.

Calculations are referred to 2006, because several of the household surveys available are from that year, and as it corresponds to a relatively neutral year in cyclical terms (in the case of Colombia, we deflated the data referred to 2008 with the national CPI). The only exception is Uruguay, in which we updated survey figures with observed CPI up to 2009 to incorporate the new personal income tax established in 2008. In those cases where fiscal legislation allows individual and household declaration, we chose the one more beneficial to tax payers, including allowances for both spouse and children, if existing⁸. Figures 3 and 4 show the effective marginal and average personal income tax rates by income levels.

Figure 3. Marginal personal income tax by income levels
(Percentage)



Note: Marginal tax rate by household labour income level. 1 represents the national average

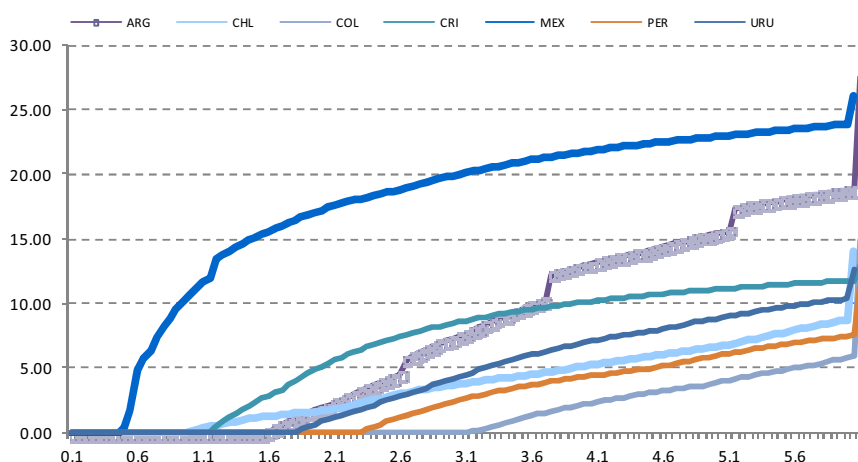
Source: Authors' calculations based on OECD Taxing Wages (Mexico), Ministries of Finance (Chile and Uruguay) and own elaboration (Argentina, Colombia, Costa Rica and Peru)

⁷ To be precise, we liquidate these two taxes for 121 levels of income (so $i = 1 \dots 121$). We grouped all households that earn more than six times the national average (this last bracket earns between eight times the average in Uruguay, to 11 times in Chile).

⁸ Tax declarations are at the individual level in Chile, Colombia, Peru and Uruguay, and by households in Argentina, Costa Rica and Mexico. Argentina and Mexico figures incorporate spouse and children allowances. Brazilian figures, taken from De Mello and Moccero (2006), are on an individual basis. Therefore, we fix both income distribution and tax legislation, as stated in the OECD methodology. As a future extension, we plan to test the effects on tax elasticities of changes in the tax code, and of variations of income distribution.

As shown in Figure 4, the personal income tax in all these Latin American countries is formally progressive, since average tax rates increase with income levels. Second, with the exception of Mexico (due to the interaction of exempted income, individual declarations and tax credits), labour income earners are net payers of the PIT starting at levels ranging from the average income in Chile to three times the average income in Colombia. Together with informality, these high levels imply that only a small share of households with labour income is a net PIT payer.

Figure 4. Average personal income tax by income levels
(Percentage)



Note: Average tax rate by household labour income level. 1 represents the national average

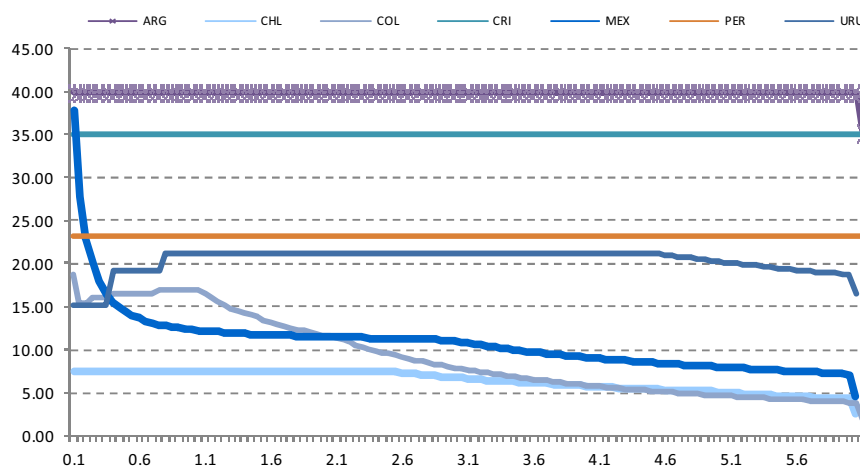
Source: Authors' calculations based on OECD Taxing Wages (Mexico), Ministries of Finance (Chile and Uruguay) and own elaboration (Argentina, Colombia, Costa Rica and Peru)

By contrast, as shown in Figure 5, social security contributions tend to be flat taxes, or even slightly regressive given the existence of minimum contributions in Mexico. Chile and Mexico are the only two countries with a fully privatised pension system, where social contributions mainly finance health benefits⁹.

As defined in equation (2), the wage elasticity of PIT and SSC is calculated as the ratio between the weighted marginal tax rate, and the weighted average tax rate (included in fifth and sixth columns in Table 1). With the exception of Mexico, PIT elasticities are between 2.5 and 3.3. These levels are higher than those observed in OECD countries, and slightly lower than the 3.4 found for Brazil in De Mello and Moccero (2006). In other words, formal progressivity of the PIT is higher in Latin America. On the other hand, SSC elasticities are very much in line with OECD estimates, except Mexico and Colombia, where they are significantly lower.

⁹ Mexican contributions cover sickness, disability and nursery, while Chilean rates cover health and unemployment. In the other cases contributions finance both health and pensions. In the case of parallel public-private compulsory pension systems (Argentina, Colombia, Peru and Uruguay), we assumed that the worker is affiliated to the public scheme.

Figure 5. Average social security contributions by income levels
(Percentage)



Note: Average tax rate by household labour income level. 1 represents the national average

Source: Authors' calculations based on OECD Taxing Wages (Mexico), Ministries of Finance (Chile and Uruguay) and own elaboration (Argentina, Colombia, Costa Rica and Peru)

To calculate the overall elasticities, the second step involves the econometric estimation of the sensitivity of the relevant tax bases with respect to the output gap ($\varepsilon_{tbl,y}$). As in Girouard and André (2005), the cyclical sensitivity of the wage base (PIT and SSC tax base) has been estimated using an equation that links directly the cyclical component of the wage bill to the output gap. We regress the share of the real wage bill in potential GDP (constructed with active population from the *Penn World* tables, and unemployment and urban workers wages from ECLAC) on the output gap (estimated using unobserved components model on real chained GDP series from *Penn World* tables as described in section III) and a constant, in logs with annual data from 1981 to 2007 (see details in Annex).

$$\Delta \ln(W_t L_t / Y_t^*) = \alpha + \varepsilon_{tbl,y} \times \Delta \ln(Y_t / Y_t^*) + \mu_t \quad (3)$$

The estimated responsiveness of the wage bill for Uruguay, Colombia (taken from Lozano and Toro, 2007) and Argentina (around 1.0) are slightly above the OECD average (0.7 according to Girouard and Andre, 2005), and Brazil (0.8 reported by De Mello and Moccero, 2006), while elasticities for the rest are significantly above previous estimates (up to 2.0 in Peru). Details on the estimations are also included in the Annex.

Table 1

Marginal and Average Tax Rates						
	Marginal tax rate		Average tax rate		Real wage elasticity of	
	PIT	SSC	PIT	SSC	PIT	SSC
	X		Y		Z = X / Y	
Argentina	2.9	39.3	0.9	40.0	3.3	1.0
Brazil	---	---	---	---	3.4	1.8
Chile	1.7	6.9	0.7	7.5	2.5	0.9
Colombia	0.9	5.7	0.3	10.9	2.5	0.5
Costa Rica	3.4	34.3	1.3	35.0	2.6	1.0
Mexico	13.7	8.8	7.0	17.5	2.0	0.5
Peru	1.1	22.6	0.4	23.3	2.7	1.0
Uruguay	1.6	20.0	0.5	19.0	3.2	1.1
Canada	28.6	7.8	18.3	9.7	1.6	0.8
France	13.9	34.9	8.2	30.7	1.7	1.1
Germany	26.2	23.9	11.4	31.1	2.3	0.8
Italy	26.3	26.5	13.2	27.6	2.0	1.0
Japan	9.6	18.7	4.9	20.5	1.9	0.9
Korea	8.5	11.2	3.6	13.1	2.3	0.9
Spain	20.2	18.3	9.5	24.1	2.1	0.8
United Kingdom	22.8	13.6	13.5	10.4	1.7	1.3
United States	19.1	11.6	10.3	12.8	1.9	0.9
OECD	21.8	19.0	12.7	18.8	1.7	1.0

Notes: Marginal and average rates are weighted by the distribution of tax payers across income levels. OECD unweighted average, excluding Chile and Mexico

Source: Authors' calculations for Argentina, Chile, Colombia, Costa Rica, Mexico, Peru and Uruguay, de Mello and Moccero (2006) for Brazil, and Girouard and André (2005) for the rest

Finally, we multiply both elasticities to obtain the overall tax elasticities. Table 2 collects the output elasticity of PIT and SSC in our selected Latin American countries, compared to those in selected OECD economies and Brazil. Given the higher elasticities of the wage bill to output gap, output elasticities of PIT are much larger in Latin America than those observed in OECD countries (3.5 on average vs. 1.2), and less in the case of SSC elasticities (1.2 on average vs. 0.7).

Corporate income tax

Concerning corporate taxes, we strictly apply the OECD methodology. Therefore, the cyclical sensitivity of the corporate tax base (proxied by corporate profits) is also a function of the elasticity of the wage bill relative to the output.

$$\varepsilon_{CIT,y} = (1 - (1 - PS) \varepsilon_{wl,y}) PS \quad (4)$$

where PS is the profit share in output proxied by the ratio of the gross operating surplus over GDP, and $\varepsilon_{wl,y}$ is the elasticity of the wage bill to the output gap. Profit shares over GDP are taken from OECD *Annual National Accounts* in the case of Chile, from the national central banks in Costa Rica and Uruguay, and from national statistics institutes in Argentina (INDEC), Colombia (DANE), Mexico (INEGI) and Peru (INEI). As shown in Table 3, output elasticities of CIT vary from 0.3 in Costa Rica to 1.2 in Uruguay, therefore lower than in OECD countries.

Table 2

Elasticities of Personal Income Tax and Social Security Contributions					
	Real wage elasticity of		Output elasticity of wages	Output elasticity of	
	PIT	SSC		PIT	SSC
	A		B	C = AX B	
Argentina	3.3	1.0	1.1	3.6	1.1
Brazil	3.4	1.8	0.8	2.7	1.4
Chile	2.5	0.9	1.4	3.5	1.3
Colombia	2.5	0.5	1.1	2.6	0.6
Costa Rica	2.6	1.0	1.7	4.5	1.7
Mexico	2.0	0.5	1.5	3.0	0.8
Peru	2.7	1.0	2.0	5.3	1.9
Uruguay	3.2	1.1	0.9	2.8	0.9
Canada	1.6	0.8	0.7	1.1	0.6
France	1.7	1.1	0.7	1.2	0.8
Germany	2.3	0.8	0.7	1.6	0.6
Italy	2.0	1.0	0.9	1.8	0.9
Japan	1.9	0.9	0.6	1.2	0.5
Korea	2.3	0.9	0.6	1.4	0.5
Spain	2.1	0.8	0.9	1.9	0.7
United Kingdom	1.7	1.3	0.7	1.2	0.9
United States	1.9	0.9	0.7	1.3	0.6
OECD	1.7	1.0	0.7	1.2	0.7

Notes: Change in tax revenues as a per cent of GDP for a 1 percentage-point change in the output gap. Based on weights for 2003 for OECD, and 2005-2006 in Latin America. OECD unweighted average, excluding Chile and Mexico.

Source: Authors' calculations for Argentina, Chile, Costa Rica, Mexico, Peru and Uruguay, de Mello and Moccero (2006) for Brazil, and Girouard and André (2005) for the rest. Output elasticity of wages in Colombia is taken from Lozano and Toro (2007).

Table 3

Elasticities of Corporate Income Tax					
	Profits elasticity of CIT	Profit share in GDP	Output elasticity of wages	Output elasticity of profits	Output elasticity of CIT
	A	B	C	$E = (1 - (1 - B) C) / B$	$F = A \times E$
Argentina	1.0	0.38	1.1	0.8	0.8
Brazil	1.0	0.54	0.8	1.2	1.2
Chile	1.0	0.54	1.4	0.7	0.7
Colombia	1.0	0.59	1.1	1.0	1.0
Costa Rica	1.0	0.49	1.7	0.3	0.3
Mexico	1.0	0.62	1.5	0.7	0.7
Peru	1.0	0.62	2.0	0.4	0.4
Uruguay	1.0	0.36	0.9	1.2	1.2
Canada	1.0	0.35	0.7	1.5	1.5
France	1.0	0.34	0.7	1.6	1.6
Germany	1.0	0.36	0.7	1.5	1.5
Italy	1.0	0.45	0.9	1.1	1.1
Japan	1.0	0.38	0.6	1.6	1.6
Korea	1.0	0.43	0.6	1.5	1.5
Spain	1.0	0.40	0.9	1.2	1.2
United Kingdom	1.0	0.31	0.7	1.7	1.7
United States	1.0	0.36	0.7	1.5	1.5
OECD	1.0	0.39	0.7	1.5	1.5

Notes: Change in tax revenues as a per cent of GDP for a 1 percentage-point change in the output gap. Based on weights for 2003 for OECD, and 2005-2006 in Latin America. OECD unweighted average, excluding Chile and Mexico

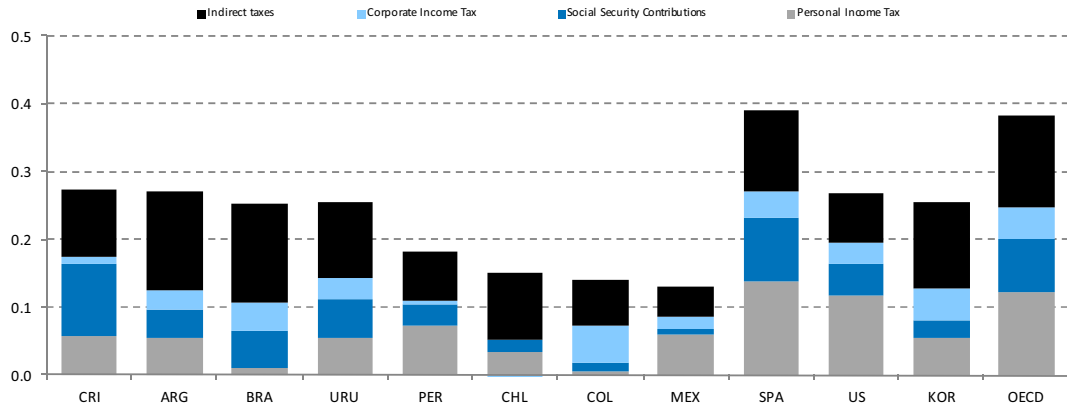
Source: Authors' calculations for Argentina, Chile, Costa Rica, Mexico, Peru and Uruguay, de Mello and Moccero (2006) for Brazil, and Girouard and André (2005) for the rest. Output elasticity of wages in Colombia is taken from Lozano and Toro (2007)

Other revenues, expenditures and overall balance

The output elasticity of the indirect tax base with respect to the economic cycle is set to unity for all countries, as in Girouard and André (2005). Finally, due to the lack of data and given the absence of unemployment benefits in many countries in the region, we suppose that current expenditures do not respond automatically to the cycle at all.

The cyclical budget response, as a share of GDP, can be expressed as the weighted sum of the four different tax revenues elasticities (based on the tax structure in 2006; see Table A.1 in the Annex). According to our calculations, the sensitivity (semi elasticity in GDP percentage points) of government budget balances to a 1 percentage point change in the output gap is 0.21 (unweighted average of the six Latin American economies), ranging from 0.12 in Mexico and 0.14 in Colombia, to 0.24 in Argentina and Uruguay, 0.25 in Brazil (De Mello and Moccero, 2006), and 0.26 in Costa Rica. This regional average is almost half the OECD average, and is explained by significantly lower automatic stabilisation from PIT (Figure 6).

Figure 6. Tax semi-elasticities to output
(Percentage points of GDP)

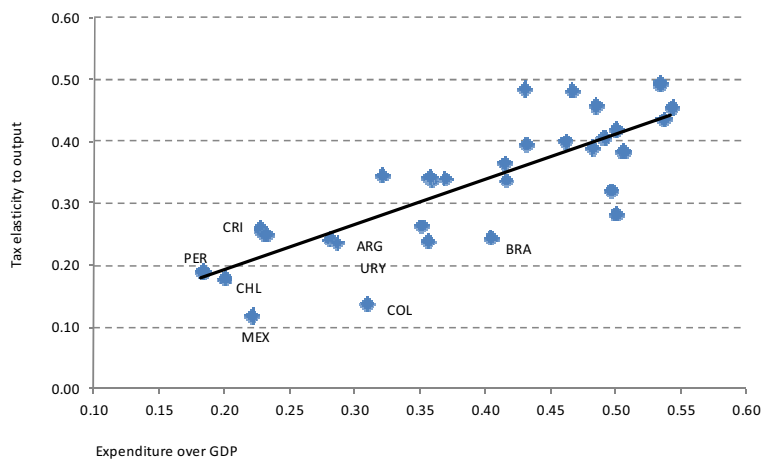


Note: OECD unweighted average, excluding Chile and Mexico

Source: Authors' calculations for Argentina, Chile, Colombia, Costa Rica, Mexico, Peru and Uruguay, de Mello and Moccero (2006) for Brazil, and Girouard and André (2005) for the rest

These estimates of the cyclical response of budget balance are positively correlated with the size of the government, as stated in the literature on fiscal macroeconomic stability in industrialised economies (see for instance Galí, 1994 and Fatas and Mihov, 2001). Nonetheless, as shown in Figure 7, some of the biggest economies in Latin America (notably Brazil, Colombia and Mexico) deviate significantly from their “expected” trends as automatic stabilisers are significantly lower than the government size (in part due to the high non-tax revenues).

Figure 7. Government size and tax automatic stabilisers in OECD and Latin America
(Percentage points of GDP)



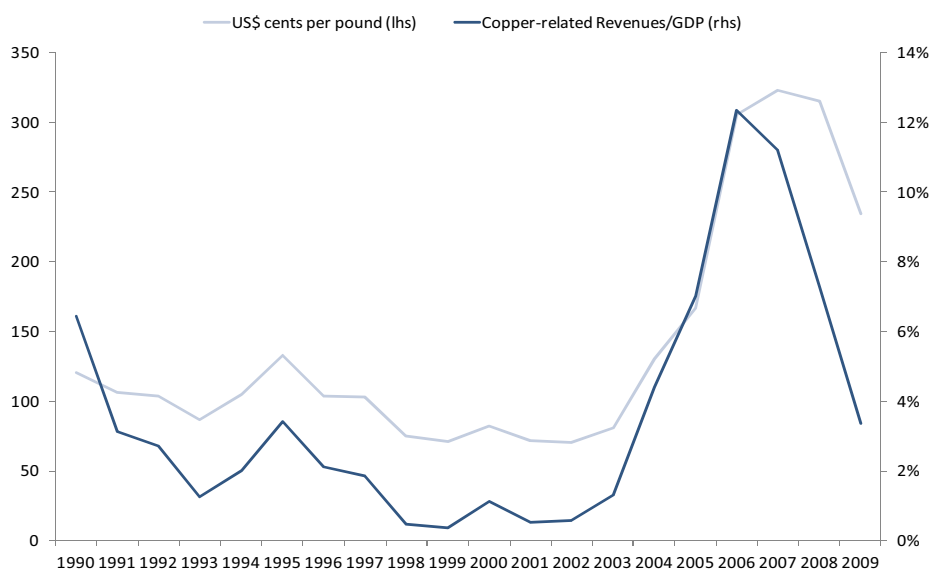
Source: Authors' calculations for Argentina, Chile, Colombia, Costa Rica, Mexico, Peru and Uruguay, de Mello and Moccero (2006) for Brazil, and Girouard and André (2005) for the rest.

II.2. Adjustment of tax and non-tax revenues for commodity prices

A special feature of several Latin American countries is the importance of commodity prices for its fiscal accounts, whether it is due to a significant share of taxation linked to rents in natural resource extraction, or the utilities of state-owned enterprises in these sectors. Not only are commodity-linked revenues important as a source of revenue, but they also tend to be very volatile, primarily due to large fluctuations in prices. Therefore, they are also relevant for fiscal sustainability and macroeconomic stability (Avendaño *et al.*, 2008)¹⁰.

Figure 8 shows copper revenues as a share of GDP in Chile from 1990 to 2009. Copper revenues during this period have risen from less than 0.5 per cent of GDP in 1999 up to more than 12 per cent of GDP in 2006. Compared with total revenues, these revenues are more than five times more volatile (copper revenues have a coefficient of variation of 1.01 versus 0.18 for total revenues). Thus, it is necessary to separate this source of income in countries where commodities are important for fiscal revenues and perform a special adjustment for commodity price fluctuations.

Figure 8. Copper revenues as share of GDP and the price of copper (US dollars cents/pound)



Source: Authors' calculations based on DIPRES and COCHILCO data

¹⁰ These authors show that the macroeconomic response to the latest Asian-driven commodity boom of exporting countries in Africa and Latin America has been fairly positive. In contrast to the nineties, during 2000-2005 African commodity-exporters have shown a more counter-cyclical fiscal stance, displaying various positive macroeconomic developments (notably, reserves accumulation, exports diversification, and improved credit profile). Results are more modest in Latin America.

Unfortunately, the OECD methodology is silent regarding this issue.¹¹ Therefore, we follow a similar methodology to the Chilean fiscal rule (see Marcel *et al.*, 2001 and Rodríguez *et al.*, 2007) and recent IMF work on this topic in Latin America and the Caribbean (e.g. Vladkova-Hollar and Zettelmeyer, 2008). The adjustment is made for Argentina, Chile, Mexico and Peru.¹² In Argentina, we consider export taxes on agricultural goods introduced in 2002. For Chile, we consider revenues transferred to the central government from the public copper company (CODELCO) and revenues from specific taxes on private mining firms.¹³ In the case of Mexico, we use international oil price data to adjust the value of transfers from the public oil firm (PEMEX) to the federal government, royalties and revenues of specific taxes on oil and petrol derivatives. It is important to point out that there are differences – due to data availability restrictions – between how we treat public enterprises in the commodity sector for Chile and Mexico. While for Chile we consider the general government, which implies that we do consider only the transfers and income taxes paid by CODELCO, for Mexico we used the non-financial public sector. Finally, in the case of Peru, we consider royalties and income taxes of the mining and fishing industries, adjusted by a weighted average (according to their share in revenues) of international copper, gold and fishmeal prices. In Annex A.3 we present more details on the series and data sources.

In terms of the adjustment, we first separate revenues (tax and non-tax) into revenues related to commodities and non-commodity revenues. The latter are adjusted as indicated in the section II.1 by the business cycle. For commodity-related revenues, we proceed as follows. Considering a spot price of p and a long-run price of the relevant commodity price p^* , structural commodity-linked revenues at time t are given by:

$$R_{s,t}^c = R_t^c \left(\frac{p_t^*}{p_t} \right)^\gamma. \quad (5)$$

As Marcel *et al.* (2001) and Vladkova-Hollar and Zettelmeyer (2008), we consider a unitary elasticity, such that $\gamma = 1$. For p^* , we considered four different options, depending on available information: future prices, five-year-ahead forecasts, a 10-year moving average or a reference price set by a panel of experts (the case of copper in Chile). As shown in Figure 9 for the case of copper, a 10-year moving average coincides roughly with the forecasts of the experts' panel, with the exception of 2009. For the latest year, it seems that experts consider a larger fraction of the recent rise in copper prices to be persistent. We discard future markets, as they

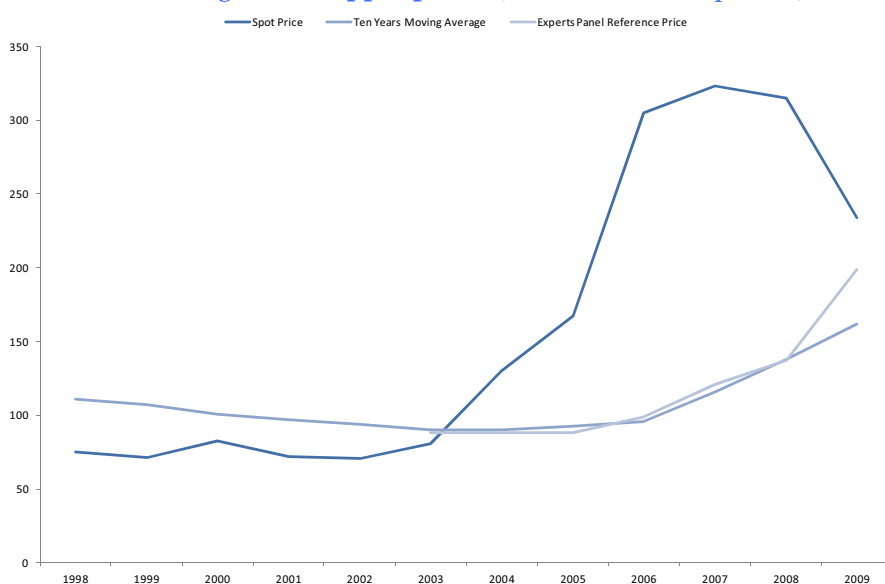
¹¹ For Norway, OECD exercises are carried out using Norway-mainland fiscal and national accounts that exclude the oil and natural gas sector in a consistent way. There is no such information available for Mexico or Chile.

¹² Commodity prices are also important in the other countries studied here, but their impact on the fiscal accounts is mainly through the business cycle rather than an autonomous effect for these economies. For the case of Colombia, it is important to point out that energy and mining related revenues represent close to 1 per cent of GDP, but are expected to play an important role in the near future (see Comité Técnico Interinstitucional, 2010).

¹³ Although other metals like molybdenum, gold and silver are also produced in Chile, copper remains by far the most important source of revenues.

prove to be relatively small and shallow (probably with the exception of oil futures), and prices tend to be very volatile. In what follows, we report our results based on the 10-year moving average price. Commodity revenues are not separately adjusted by the output gap, given that commodity prices are already significantly linked to the business cycle.

Figure 9. Copper prices (US dollars cents/pound)



Source: Authors' calculations based on data from Cochilco and London Metal Exchange

As shown in of Table 4, as of 2007 a large fraction of observed revenues linked to commodities were likely to be transitory. For Chile, around two thirds of the 11.2 percentage points of GDP linked to copper revenues were due to copper prices above its long-run price. The results for Argentina and Peru indicate that around half of commodity revenues could be considered transitory in 2007, although the absolute magnitudes are smaller than for Chile or Mexico. For the case of Mexico, it would be around one third of the oil revenues that are linked to the oil price cycle (almost 4 percentage points of GDP). This table also shows that the global economic crisis, and the consequent decline in commodity prices due to the collapse of global demand, had an important effect on some of the commodity-linked revenues in the region, but the effect is not homogenous. In fact, while in 2009 commodity revenues in Chile declined significantly, in the other three countries the effect was considerably milder.

II.3. Main results

Including all these elements and using the share of each tax on GDP for general governments from ELAC-ILPES and IDB public sector databases of 2006 (except for Colombia and Uruguay, where we used central government data for 2006 and 2008 respectively), we can derive the adjusted balance b^* (as a share on potential output) as:

$$b^* = \frac{\left(\sum_{i=1}^4 T_i (Y^* / Y)^{\alpha_{i,y}} \right) - G + X}{Y^*} + R_c^s \quad (6)$$

where G are current primary government expenditures, the expression in parenthesis is the cyclically-adjusted receipts from taxes excluding those directly related to commodities, X are non-tax revenues not related to commodities minus capital and net interest spending, Y^* is the level of potential output, and R_c^s are the structural revenues related to commodities from equation (5).

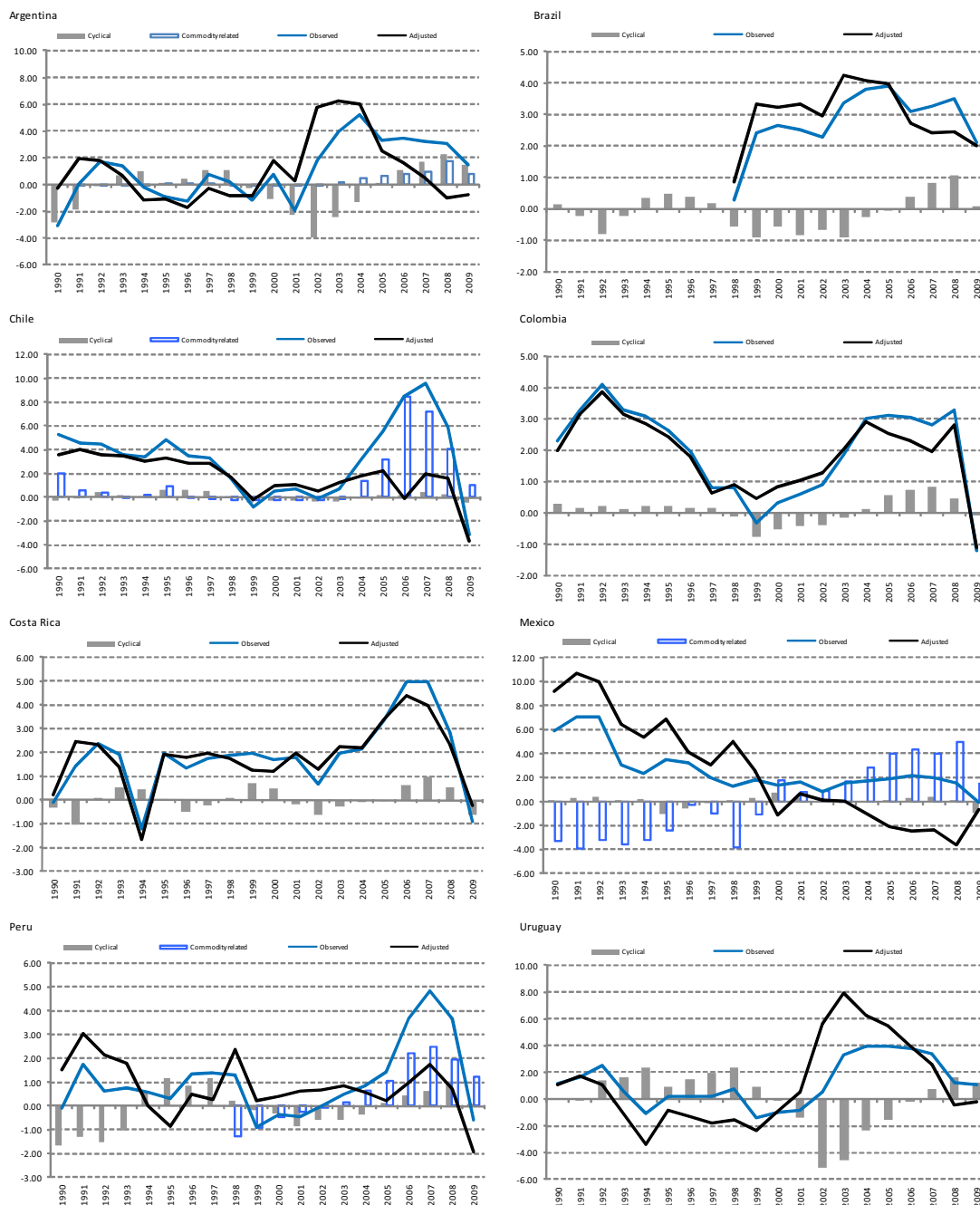
Table 4. Commodity-linked revenues

		Argentina	Chile	Mexico	Peru
as percentage of GDP (1)					
	1998	0.0	0.5	6.1	2.1
	2003	2.5	1.3	7.4	2.5
	2007	2.5	11.2	7.9	5.0
	2009	2.9	3.4	7.4	3.8
as percentage of total revenues (2)					
	1998	0.0	2.1	29.8	11.1
	2003	10.3	5.7	33.3	14.0
	2007	8.6	37.9	35.4	23.7
	2009	9.0	11.4	31.0	18.2
Structural commodity revenues (per cent of GDP) (3)					
	1998	0.0	0.7	9.9	3.4
	2003	2.3	1.5	5.7	2.3
	2007	1.5	4.0	3.9	2.5
	2009	2.1	2.3	5.9	2.6
Difference (3) - (1)					
	1998	0.0	0.2	3.8	1.3
	2003	-0.1	0.2	-1.7	-0.2
	2007	-1.0	-7.2	-4.0	-2.5
	2009	-0.8	-1.0	-1.5	-1.2

Source: Authors' calculations based on national sources, IMF and ECLAC-ILPES and IDB data

Figure 10 shows the evolution of the primary budget balance (excluding interests) in the selected Latin American economies, the estimated impact of the economic cycle on revenues (automatic stabilisation) with the price of commodities (for Argentina, Chile, Mexico and Peru), and the resulting "adjusted primary balance".

Figure 10. Adjusted primary budget balance
(Percentage points of GDP)



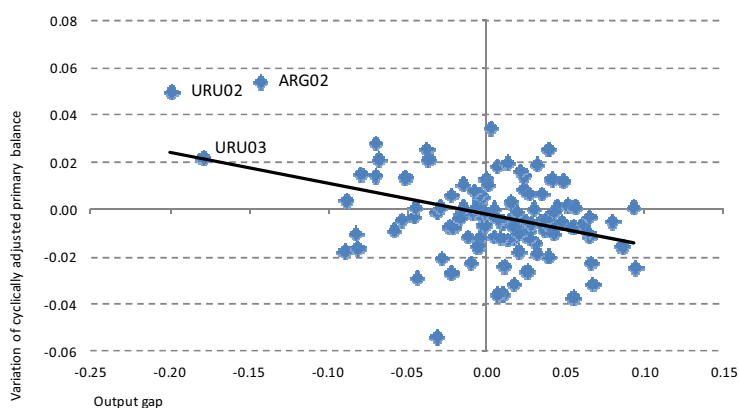
Notes: Primary budget balance is adjusted for deviations of GDP and commodity prices (for Argentina, Chile, Mexico and Peru) around their trends, as explained in sections II.1 and II.2. Non-financial public sector figures in Argentina, Colombia, Mexico and Uruguay, and general government figures for Brazil, Chile, Costa Rica and Peru, from ECLAC-ILPES and IDB databases

Source: Authors' calculations

According to our estimates, at the onset of the crisis, adjusted primary balances were in equilibrium or surplus in a majority of countries (1 p.p of GDP in Peru, 2 p.p. in Uruguay, 2.5 p.p. in Brazil, almost 3 p.p. in Chile and Colombia, and 5 p.p. in Costa Rica; -1.0 p.p. in Argentina and -3.6 p.p. in Mexico). So, even taking into account the positive economic and commodity price cycles, these figures confirm that the region faced the crisis in relatively good shape. The figure also highlights the significant impact of the economic cycle; especially in Argentina and Uruguay (automatic stabilisers via revenue contributed more than 4 p.p. of GDP to sustain aggregate demand). Finally, commodity prices (copper, gold and oil) contributed significantly to improve fiscal positions in latest years (around 1 p.p. in Argentina, 2 p.p. in Mexico, 3 p.p. in Peru and over 6 p.p. in Chile). Obviously, 2009 figures reflect a generalised deterioration, driven by cyclical, commodity related and discretionary factors¹⁴.

Next, we explore the pro-cyclicality of discretionary fiscal policy in the standard way, comparing the variation of the adjusted primary balance and the output gap level. Fiscal policy is defined as counter-cyclical if the surplus increases (deficit decreases) in a year with positive output gap, or if the deficit increases (surplus decreases) when the output gap is negative. As represented in Figure 11, in the last two decades discretionary fiscal policy in Latin America has tended to be pro-cyclical (the correlation coefficient is -0.37 and in more than 60 per cent of cases, 53 out of the 144 cases, discretionary fiscal policy was not stabilising).

Figure 11. Output gap and change in adjusted budget balance
(Percentage points of GDP)



Source: Authors' calculations

¹⁴ 2009 budget figures are preliminary for many economies. Data for Argentina, Costa Rica, Colombia and Peru were taken from the respective Central Bank databases, for Mexico and Uruguay from Ministry of Finance databases, and Brazil and Chile from OECD *Economic Outlook* projections (May 2010). Access to stable funding (both internal and external) determined the size of announced fiscal packages in the region. Chile and Peru were the top performers in the "fiscal resilience index" constructed by the OECD (2009b); an index that takes into account the external debt to exports ratio (a standard fiscal solvency indicator), the financing cost of fiscal expansions (proxied by the JP Morgan's EMBI Global spreads), and the government's pre-crisis budget balance with respect to GDP. Not coincidentally, these two countries announced and implemented the biggest fiscal stimuli for 2009.

From a national perspective, no country has benefited from sustained countercyclical discretionary fiscal policy, and in all cases, countries show a majority of pro-cyclical fiscal impulses (the most favourable cases are Brazil and Mexico, with 46 and 47 per cent of stabilising episodes, respectively). In spite of that, based on the correlations of the variation of the adjusted budget balance and output gap level, Chile shows to some extent a countercyclical pattern (0.35), while in Colombia and Peru discretionary fiscal policy has been fairly neutral (coefficients of correlation of 0.01 and -0.07 respectively). Argentina and Uruguay show the highest pro-cyclically, driven mainly by the impact and policy response to the 2002 crisis (if this episode is excluded, Uruguayan fiscal policy has been fairly neutral). Additionally, we find no clear progress in this field in the last decade. From 2000, fiscal policy has been more pro-cyclical (-0.49 from 2000 vs. -0.22 from 1990 to 1999) or as pro-cyclical at best (-0.18 when controlling for the 2002 crisis). With these criteria, good practices stem again from Costa Rica, where discretionary fiscal policy has turned counter-cyclical, and Chile (where it was maintained throughout the period analysed).

We also test whether these results are symmetric along the economic cycle. Using this simplified approach, discretionary fiscal policy seems to be more pro-cyclical in the crisis, when output gap remains negative (correlation of -0.44) than in booms (-0.15). So, apparently, the pro-cyclicality of fiscal policy in the region is not explained by the existence of profligate governments, but with either internally or externally credit rationed countries, as dramatically shown in 2002 crisis, where a huge fiscal adjustment was implemented in a deep crisis environment in Argentina and Uruguay. Excluding this big shock, no significant difference remains between booms and (regular) busts, an issue that should be borne in mind when setting fiscal rules and institutions. Of course, if the fiscal authorities in the country are aware of the potential impact of such large negative shocks, one could still make the argument that it would be optimal to save more during the good times. However, when it comes to design fiscal rules, it is important to take into account that emerging markets might lose exogenously access to finance during times of turmoil.

While the main focus of this paper is on the cyclicity of fiscal policy in Latin America and the estimation of structural balances, the issue of fiscal sustainability has been of importance for the region, given its recurrent debt problems. Overall, in recent times there has been a reduction of debt-to-GDP levels in the region. However, there are considerable differences within the region. On the one hand, Chile, Costa Rica, Mexico (after the “tequila crisis”), and Peru reduced their debt-to-GDP levels over the last decade and more. Peru and Chile had debt levels of almost 80 per cent of GDP in the early 1990s, while nowadays exhibit levels around 25 per cent of GDP. Less pronounced, but still significant, has been the debt burden reductions in Costa Rica and Mexico from close to 50 per cent of GDP in the mid-1990s to less than 30 per cent in 2008. On the other hand, Argentina and Uruguay have suffered both a debt crisis during the collapse of their fixed exchange rate regimes and associated banking crises in 2001-2002. Since then, in part due to debt restructuring, but also due to economic growth and fiscal surpluses they have reduced their debt levels down to around 50 per cent of GDP, which are higher levels than ten years ago. Brazil is closer to the case of Argentina and Uruguay, with still high levels of debt (at least in gross terms) and a somewhat slower reduction than the first group.

Debt sustainability depends on a series of factors such as long-term economic growth perspectives, the cost of funds (interest rate), and the composition of debt; but also things much harder to measure such as expectations (Calvo, 1988) and institutional/political characteristics affecting a country's ability and willingness to service its sovereign debt. Furthermore, exogenous shocks to each of these variables are hard to identify, making debt sustainability analysis a challenging topic. Therefore, in this section we explore some aspects of debt dynamics in the region using standard techniques in the literature, rather than making a precise judgement regarding the need and size of fiscal adjustment in each country.

Although it is not obvious how to establish a benchmark for safe debt levels, one way to approach this issue is to compute the primary surplus required to stabilise debt to GDP ratios at their current level, and compare this required surplus with both actual and structural balances.

Given the government budget dynamics in equation (7), fiscal policy is considered sustainable if the primary surplus (S) is greater than the primary surplus required to stabilise the debt level (D) relative to GDP (Y):

$$D_{t+1} = (1 + r_{t+1})D_t - S_{t+1}, \quad (7)$$

where debt levels are end-of-period and r_{t+1} is the average real interest rate during period $t+1$. Assuming that GDP (Y) grows at a rate g_t , dividing equation (7) by Y_{t+1} yields:

$$d_{t+1} = \frac{1 + r_{t+1}}{1 + g_{t+1}} d_t - s_{t+1}, \quad (8)$$

where all lower case variables refer now to GDP ratios.

Thus, for a given interest rate and GDP growth rate (assuming that they are constant over time), the primary surplus that stabilises the current debt-to-GDP level is given by:

$$\bar{s} = \frac{r - g}{1 + r} \bar{d}. \quad (9)$$

It should be recognised that this definition has some limitations. First, it does not say anything regarding the initial debt-to-GDP ratio, which might be too high and therefore an additional fiscal effort to reduce it to a safe level would be required. Second, this 'accounting approach' does not consider underlying correlations and endogeneity of variables. For instance, in the presence of default risk, interest rates would increase with the debt burden and with net financing needs if liquidity risks are also present. Growth could in turn depend negatively on the cost of funding (r) and the debt burden (if there is a debt overhang problem, where private investment is lower because economic agents incorporate the prospects of higher future taxes to service the debt).

In addition, valuation effects can have very important quantitative effects, as most countries in the region have painfully learnt during the 1980s and 1990s (debt dollarization). In

particular, swings in the real exchange rate often imply large fluctuations in the debt-to-GDP ratio, if the fraction of dollarised debt is different from the share of tradable goods in GDP.¹⁵ Observe that the steady-state debt-to-GDP ratio can be written as:

$$\bar{d} = \frac{B + eD^*}{Y}, \quad (10)$$

where e is the relative price of tradable goods in terms of one unit of output, D^* is debt denominated in tradables (dollars) and B in output units. The right-hand-side of equation (10) can be written as:

$$\frac{B}{Y} + \phi \frac{D}{Y}, \quad (11)$$

with $\phi = \frac{eD^*}{D}$ representing the share of foreign-currency denominated debt.

The valuation-corrected debt-to-GDP ratio for a given equilibrium exchange rate \tilde{e} is:

$$\tilde{d} = \frac{B}{Y} + \tilde{\phi} \tilde{d}, \quad (12)$$

where $\tilde{\phi} = \frac{\tilde{e}D^*}{D}$.

Thus, under an appreciated real exchange rate ($e < \tilde{e}$), the valuation-corrected debt ratio will be greater than the observed ratio. This implies that the required primary surplus, shown in equation (13), will also be higher, given that a depreciation of the currency vis-à-vis the dollar would be expected in the transition to the steady state. Vice versa, if the currency is depreciated (above the equilibrium exchange rate), the adjusted debt level will be less than the observed one.

$$\tilde{s} = \frac{r - g}{1 + r} \tilde{d}. \quad (13)$$

In practical terms, we measure the equilibrium real exchange rate to be measured by the average bilateral real exchange rate vis-à-vis the US dollar, considering CPI prices over the period 1990 – 2008. Furthermore, as proxy for the share of foreign currency debt in total debt, we use data on the markets where debt was issued, assuming that all external debt is in US dollars and all domestic debt is indexed to the domestic price level (which we assume to equal the GDP deflator; this is the implicit assumption in equations 11 – 13).

A final adjustment refers to point in the cycle at which GDP stands, given that the debt-to-GDP ratio would be lower during a boom (holding constant the stock of debt), such that our preferred measure of sustainability is given by:

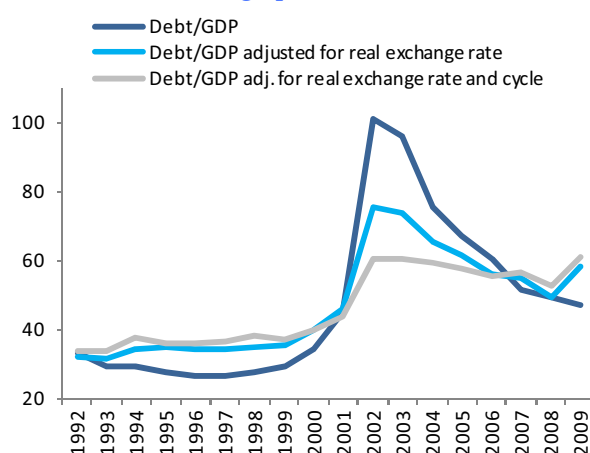
$$\hat{s} = \frac{r - g}{1 + r} \tilde{d} \frac{Y}{Y^*}, \quad (14)$$

where Y^* is potential output. In practical terms, we compute potential output jointly with the business cycle using the structural time series approach described below.

¹⁵ In addition, the remaining fraction of debt in general is often not nominal debt, but indexed to CPI inflation or short-term interest rates, which move often in tandem with the exchange rate.

Before computing the required fiscal surpluses, it is useful to explore the relevance of these adjustments. Figure 12 shows the potential importance of these adjustments from a quantitative point of view for the case of Uruguay. Debt levels as a ratio of GDP in the late 1990s were slightly below 30 per cent of GDP. However, when taking into account the appreciation of the real exchange rate with respect to its long-term average, debt levels would have been ten percentage points of GDP higher. The opposite is true for 2002, where the observed debt-to-GDP ratio shot up to over 100 per cent of GDP, while it would have been around 76 per cent of GDP if debt was valued at the long-term real exchange rate, and almost 16 p. p. of GDP less if it were taken into account that the Uruguayan economy was in a deep crisis with GDP far below its potential (almost 20 per cent, according to our estimates). Finally, regarding the large reduction in the debt-to-GDP ratio after the crisis of more than 50 percentage points of GDP between 2002 and 2009, our structural measure of debt was reduced by 7.7 percentage points until 2008, but increased in 2009 to reach similar levels as in 2002. Thus, most of the reduction in the debt-to-GDP ratio could be attributed to the rebound in economic growth and the appreciation of the real exchange rate in the aftermath of the devaluation of the currency.

Figure 12. Debt dynamics and the real exchange rate in Uruguay
(Percentage points of GDP)



Source: Authors' calculations based on ECLAC-ILPES database

The main results for the eight countries for 2009 are reported in Table 5.¹⁶ As discussed above, in 2009, most countries present a considerably lower structural balance in 2009 than in previous years, given the automatic and discretionary fiscal expansion in response to the economic crisis. However, all countries (except Argentina) have been able during the last decade to exhibit fiscal balances above those required to sustain their current debt levels, such that they could be expected to reverse expansionary policies without major difficulties. In terms of the difference between the adjusted balance and the required balance to keep debt levels at their

¹⁶ For each country we considered the current yields (average 2010) on sovereign debt bonds (JP Morgan's EMBIG) as the relevant interest rate. Observed and trend growth rates in 2009 are estimated according to the methodology explained in section III.

current values, while Brazil is the only country with a structural balance above the required surplus, for several countries the difference is below two percent (Costa Rica, Uruguay, Colombia, Mexico and Peru).

Table 5. Debt sustainability analysis

Country	Adjusted primary balance (2009)	Observed primary balance (2000 - 2009)	Required surplus (baseline)	Required surplus (IMF forecasts)
Argentina	-0.8	2.1	3.1	3.5
Brazil	2.0	3.0	1.3	1.0
Chile	-3.7	2.8	0.1	0.0
Colombia	-1.1	1.6	0.5	0.3
Costa Rica	-0.2	2.3	0.8	0.4
Mexico	-0.7	1.5	1.2	0.4
Peru	-1.9	1.2	-0.1	-0.1
Uruguay	-0.2	1.6	0.9	1.2

Notes: Required surplus corresponds to equation (14) with debt-to-GDP ratios adjusted by the real exchange rate and the business cycle. Observed primary balance is the average of observed fiscal balances as percentage of GDP over the last ten years. IMF forecasts refer to the WEO April 2010 forecast of real GDP growth in 2015

Source: Authors' calculations

Argentina and Chile are the exceptions, with a difference of 3.9 and 3.7 p. p. of GDP, respectively. However, Argentina and Chile are in very different situations. First, Chile took discretionary measures with a fiscal impulse of around 5.6 p. p. of GDP (comparing 2007 with 2009), while the impulse in Argentina was much smaller (1.3 p. p. of GDP). Thus, countercyclical fiscal policy was much stronger in Chile than Argentina. This impulse was taken from a very strong position (debt-to-GDP of only around 6 per cent of GDP) in Chile, which is also reflected in the low fiscal surplus required to balance debt levels at their current value; meanwhile Argentina requires a much higher fiscal primary surplus (and has higher levels of debt, 47.1 per cent of GDP, adjusting for the real exchange rate and the business cycle). In more general terms, the level of the structural balances (as well as the fiscal impulse during 2007 – 2009) is highly correlated with the initial debt position. Countries with higher levels of debt were in a more solid position to have higher structural deficits and larger fiscal impulses (the correlation coefficients with the debt levels are 0.90 and 0.48, respectively).

III. ESTIMATION OF OUTPUT GAP

Many researchers have recognised and analysed aggregate cycles in production without reaching consensus on its causes.¹⁷ Lack of consensus regarding the theory is accompanied by an empirical problem; measurement of economic cycles depends on the estimation of potential output, which is unobservable. OECD methodology decomposes production through classical Solow factor decomposition of capital constructed through perpetual inventory methods, labour (hours worked) and multifactor productivity (MFP). Potential output is then constructed as the counter-factual production arising from full capital utilisation¹⁸, unemployment rate equal to the NAIRU, and MFP given by its long-run trend.

Although we follow the above criteria to construct potential output in the Latin American countries, we could not follow OECD methodology by further disaggregating factors by their specific types, by the sectors of the economy where they are being used, or by their rate of utilization. In particular, restrictions on data availability for several Latin American countries forced us to construct capital from aggregate investment figures, using the perpetual inventory method with infinite lifespan and a constant depreciation rate of eight percent. Real investment, real GDP and active population data are chained series¹⁹ built from series in *Penn World* tables, which cover a span of nearly six decades, from 1950 to 2007. The series are extended up to 2013 using IMF's *World Economic Outlook* estimates and forecast as of April 2010.²⁰ The treatment of net exports, in real terms (volume) or in terms of its purchasing power (dollars), merits also some attention. While the first measure better reflects production dynamics, the latter better reflects change on income. We opt for the former measure of volume on two grounds: we keep consistency when we later decompose GDP using a production function, and we analyze the

¹⁷This has led economists to declare such aggregate behaviour dead in more than one occasion. The latest notable quote came in 2003 from Robert Lucas, who in his presidential address to the *American Economic Association* declared that 'the central problem of depression-prevention has been solved, for all practical purposes, and has in fact been solved for many decades'.

¹⁸ OECD latest revision to potential output uses total capital rather than a filtered series of such series (OECD, 2008).

¹⁹ See OECD (2001) for the benefit of chained indices with respect to other bases of conversion, especially when looking at higher frequency data and avoiding level comparison across countries.

²⁰ Potential output is estimated up to 2009. But forecasts for years 2010 onwards are used as a way to circumvent well-known end point filter problems when estimating trends. GDP forecasts are provided by the IMF, while investment forecasts are estimated from those GDP forecasts, using simple regression of investment growth on GDP growth between 1990 and 2009.

effect of terms of trade on fiscal balance separately from the effect of the business cycle. Initial capital stock in 1950 is assumed to be on a balanced growth path, thus approximated by

$$K_{1950} = I_{1950} / [(1 + g)(1 + n) - (1 - \delta)] \quad (15)$$

where I_{1950} is initial investment expenditure (filtered by a linear interpolation of the log investment throughout the 1950s), g is the average rate of technological progress on that same decade, and n is the corresponding average growth rate of active population.

For the implicit Cobb-Douglas production function we assume a capital share of 0.5 for all countries. This is significantly different from the standard approximation of one third, but closer to the average obtained in the literature that covers emerging markets (see for example Gollin, 2002 for country-specific measures of this parameter for a wide range of countries).

Given the broad level of aggregation, cyclical action will be centred in MFP. Several statistical studies have questioned the usual Hodrick-Prescott methodology to de-trend economic series, arguing that it is tailor-made for the output cycles in the US, but not necessarily optimal for any other type of economic series (see Harvey *et al.*, 2008). Furthermore, there is ample evidence that emerging markets have a very different cyclical behaviour than industrialised economies, with some authors putting into question even the existence of cyclical shocks (e.g. Aguiar and Gopinath, 2007).

To address some of these challenges posed in the literature, we de-trend the resulting MFP series using the unobserved components model suggested by Harvey (1998). We use this state-space estimation method to estimate unexpected shocks to the MFP series, decomposing these shocks into three components: shocks that have a permanent effect on MFP, cyclical shocks with an estimated frequency, and time decay, and transitory ‘white noise’ shocks. Permanent shocks determine the trend while the two latter shocks determine the gap to potential output. Harvey (1989) shows that the Hodrick-Prescott filter can be obtained as a particular case of this method, by imposing two additional restrictions: no cyclical component and a predetermined ratio between the variance of transitory and permanent shocks (a ratio that coincides with the parameter lambda of HP filters).

We define the logarithm of multifactor productivity a , and use the state-space domain to decompose the series into three unobserved components: a trend t , a cycle c , and a transitory shock ξ_t :

$$a = t + c + \xi_t \quad (16)$$

The trend component accounts for permanent changes in the growth rate of (log) MFP, and is thus interpreted as the ‘long run trend for multi factor productivity’ in potential output. It is specified as growing with a stochastic drift μ :

$$t = t_{-1} + \gamma \Delta_{crisis} + \mu \quad (17)$$

where t_{-1} is the trend in the previous period and Δ_{crisis} is a year dummy that account for large permanent MFP losses at the beginning of the 1980s debt crisis. The drift rate μ is assumed to follow a random walk:

$$\mu = \mu_{-1} + \beta \Delta_{crisis} + \xi_\mu \quad (18)$$

where the same 1980s dummy Δ_{crisis} is used to account for any large permanent reduction in MFP's growth rates after the debt crisis. Thus, MFP trend grows at a rate that varies, but that at

any time t , is best forecasted as remaining constant and equal to current rate μ . The large recession in the early 1980s and the prolonged low growth that resulted call for adding the Δ_{crisis} dummy, which proves to be significantly negative for both the level and rate of MFP trend. As countries felt the 1980s recession in different years (between 1981 and 1982), for each country we select the year dummy which maximises the log likelihood (following the AIC criteria).

The cycle component c follows the autoregressive process:

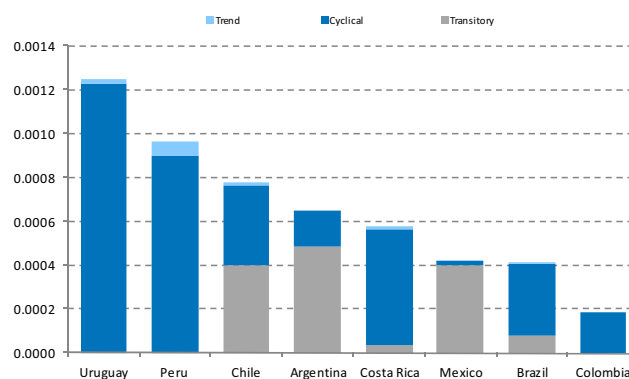
$$c = \rho \cos(\lambda) c_{-1} + \rho \sin(\lambda) c_{-1}^* + \xi_{\lambda} \quad (19)$$

$$c^* = -\rho \sin(\lambda) c_{-1} + \rho \cos(\lambda) c_{-1}^* + \xi_{\lambda}^* \quad (20)$$

where ξ_{λ} and ξ_{λ}^* are disturbances with equal variance. The period of the cycle is $2\pi/\lambda$. The damping factor ρ with $0 < \rho < 1$ ensures that c is a stationary ARMA (2, 1) process with complex roots in the autoregressive part. It is assumed that all disturbances are normally distributed and are independent of each other (usual assumption to assure the identification of the parameters). Initial values for the stationary cycle components are given by the unconditional distribution and for the non-stationary trend and drift components by a diffuse prior. The filtered and smoothed values of the unobserved components are generated by the Kalman filter.

Estimated parameters for the temporary, cyclical and trend components vary significantly across countries. Figure 13 shows the variance decomposition of unexpected shocks in each period ($\xi_{\mu} + \xi_{\lambda} + \xi_t$). While Uruguay has the largest estimated total variance, its shocks are mostly cyclical. The figure also shows that long term estimated shocks to the trend in Chile, Costa Rica, Peru and Uruguay have a statistically significant variance. As expected, even for these countries, this variance is significantly smaller than the estimated variance of the two stationary shocks; a fact that translates into a relatively smooth long-term trend. Though smaller in size than the stationary shocks, trend shocks follow a random walk. Thus their effect is cumulative and large after several periods.

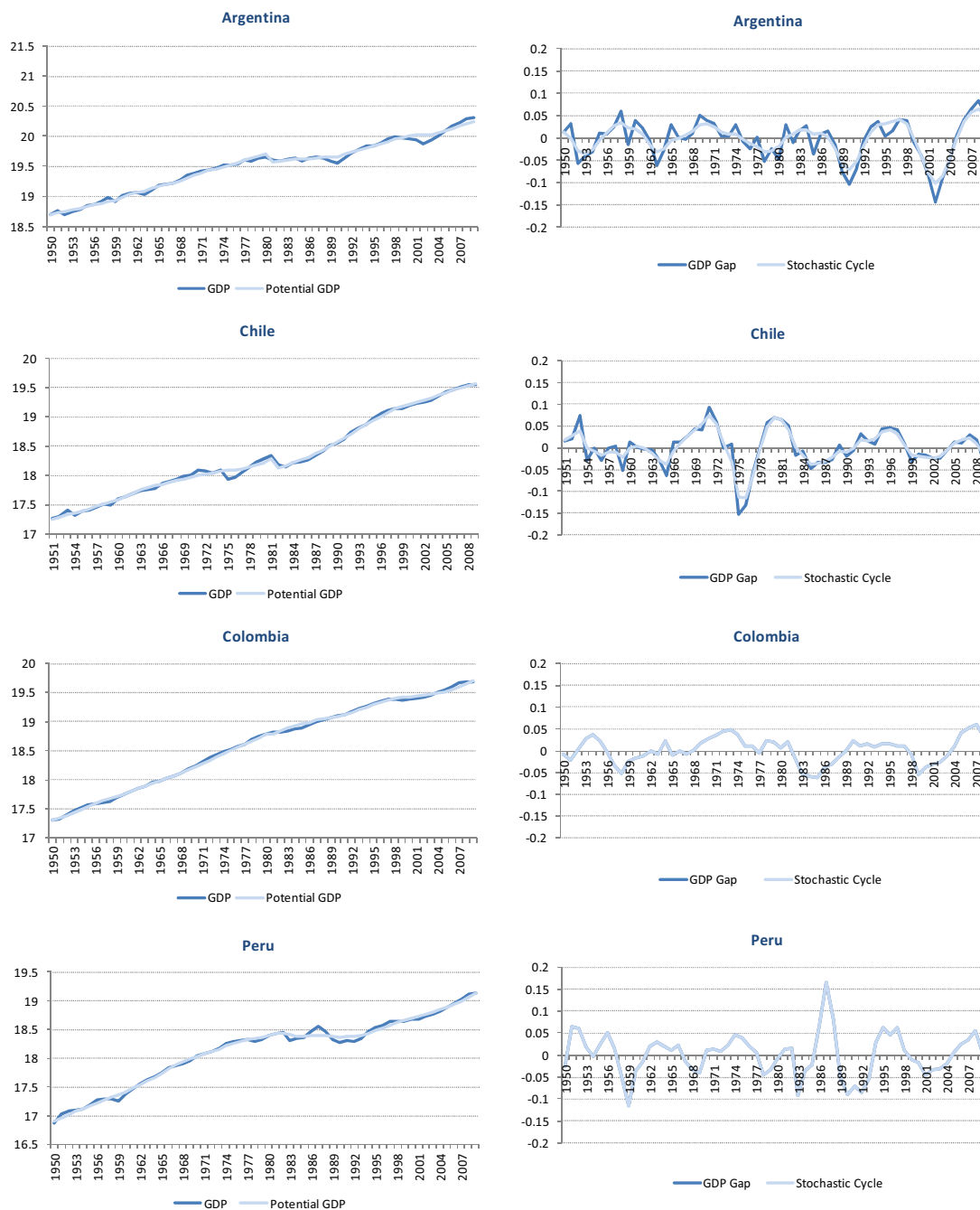
Figure 13. Estimated variance decomposition of shocks to log MFP



Source: Author's calculations

For this reason, while estimated trends in Argentina, Brazil and Uruguay are close to (but different than) zero, growth rate of MFP, together with changes in capital formation, may accumulate and cause significant changes on long run GDP (as observed in Figure 14).

Figure 14. Evolution of estimated trend and cycles for Argentina, Chile, Colombia and Peru



Source: Author's calculation

Table 6 shows the estimated damping factor and the estimated period $2 /$ for the stochastic cycle component. Uruguay shows the longest stochastic cycles (averaging 15 years) while Mexico and Peru show the shortest cycles (averaging 9 years). Brazil's estimated cycles are

the closest to the 'biblical cycle' of 14 years. The damping factor for Costa Rica is the strongest with ρ equal to 0.24 (i.e., the cyclical shock is dampened to a fourth of its size by the following year), while Mexico exhibits the weakest dampening effect with an estimated ρ equal to 0.93 (i.e. it takes 19 years for the cyclical shock to be dampened to a fourth of its size). In Mexico, the high estimated value of ρ , combined with the low estimated variance of cyclical shocks, implies a very stable 'almost non-stochastic' cycle.

Table 6. Estimated parameters for cyclical shocks

	Period	ρ
Argentina	11.4	0.84
Brazil	14.1	0.66
Chile	11.6	0.77
Colombia	14.3	0.74
Costa Rica	12.8	0.24
Mexico	8.6	0.93
Uruguay	15.3	0.72
Peru	8.9	0.67

Source: Author's calculations

IV. CONCLUSIONS AND POLICY IMPLICATIONS

This paper aims to contribute to the debate on fiscal policy in Latin America by measuring cyclicity of fiscal balances using a common methodology. At the onset of the international financial crisis in 2008-2009, many indicators suggested that Latin American economies were facing the crisis in a much better macroeconomic position than in the past; with positive budget surpluses, lower debt-to-GDP levels and a more credible monetary policy thanks to inflation targeting regimes. Solid macro balances were the new reality in a region where fiscal fragility had been at the root of past protracted crises, such as the dramatic debt crisis of the 1980s.

We track fiscal balances since the early nineties for a set of Latin American economies, implementing both standardised cyclical-adjustment OECD methodology and regional specific adjustments for the impact of commodity prices. These estimations allow measuring the size of automatic stabilisers embedded in tax policies, and the cyclicity of discretionary fiscal policy in the region as a whole. Additionally, we perform debt sustainability exercises to analyse how far from a potential benchmark current fiscal balances are.

Our main messages can be summarised as follow. First, there is a great degree of uncertainty concerning output gap estimates in Latin America. Compounded with highly volatile cyclical shocks, there is evidence of highly volatile trends for potential output. Second, commodity cycles may be as relevant to countercyclical policy as economic cycles, because of the former's significance in total fiscal revenues. Third, tax automatic stabilisers are significant, although fairly small. Primary budget balances respond automatically around 0.2 p.p. for each percentage point of output gap in the region, half the OECD average (although with significant regional differences). Forth, since the early nineties, discretionary fiscal policy has been procyclical in Argentina, Brazil, Costa Rica, Mexico and Uruguay, while neutral in Chile, Colombia and Peru. Fifth, pro-cyclicity of discretionary fiscal policy is probably explained by lack of access to credit during deep crises, rather than by profligate spending. And sixth, from a structural perspective, both cyclically-adjusted balances and debt sustainability analysis confirm the better position enjoyed by most countries in the region before the crisis.

Venues for continuing research include lifting restrictions and understanding the implications of distinguishing cyclical and trend volatility. In a first stage, some hard assumptions we made to apply the OECD methodology may be relaxed, in particular the unitary elasticity of consumption taxes to the cycle, and the consideration of automatic stabilization via expenditure. Additionally, alternative data sources of the distribution of tax payers (administrative data) may be used as a robustness check of the results. Finally, it would be interesting to identify in the tax revenues series the effects of tax and social security reforms implemented since 1990, and to estimate their impact on elasticities.

APPENDIX

A.1. Output gap and wages

Regressions of income growth to growth of output gap

Argentina

sW	Coef.	Std. Err.	t	P> t	[95% Conf. Interval]	
sGap	1.052835	.3538535	2.98	0.006	.3240601	1.78161
cons	-.0010282	.0146514	-0.07	0.945	-.0312034	.029147

Chile

sW	Coef.	Std. Err.	t	P> t	[95% Conf. Interval]	
sGap	.696172	.2313957	3.01	0.006	.2196036	1.17274
cons	-.0014225	.0055165	-0.26	0.799	-.0127839	.0099388

Costa Rica

sW	Coef.	Std. Err.	t	P> t	[95% Conf. Interval]	
sGap	1.729863	.3118525	5.55	0.000	1.087591	2.372136
cons	-.0016511	.0082065	-0.20	0.842	-.0185527	.0152505

Mexico

sW	Coef.	Std. Err.	t	P> t	[95% Conf. Interval]	
sGap	1.452921	.3424351	4.24	0.000	.7476625	2.158179
cons	.002872	.0117638	0.24	0.809	-.0213559	.0270999

Peru

sW	Coef.	Std. Err.	t	P> t	[95% Conf. Interval]	
sGap	1.954151	.4909695	3.98	0.001	.9429808	2.965322
cons	-.01838	.0258092	-0.71	0.483	-.0715351	.034775

Uruguay

sW	Coef.	Std. Err.	t	P> t	[95% Conf. Interval]	
sGap	.8907144	.2280803	3.91	0.001	.4209743	1.360454
cons	-.0116578	.012358	-0.94	0.355	-.0371096	.013794

Results of unobserved components model estimation for potential multi factor productivity

Argentina

Sample: 1950 - 2007

Number of obs = 58

Log likelihood = 105.73313

log MFP	Coef.	Std. Err.	z	P> z	[95% Conf. Interval]	
γ 1981	-.1532983	.0204885	-7.48	0.000	-.193455	-.1131416
β 1981	-.0011573	.0011727	-0.99	0.324	-.0034557	.0011411
S.E. of ξ_{μ}	5.45e-10	.0002444	0.00	1.000	-.0004791	.0004791
$\rho \cos(\lambda)$.7885919	9.55e-06	8.3e+04	0.000	.7885732	.7886106
$\rho \sin(\lambda)$	-.4852602	4.16e-06	-1.2e+05	0.000	-.4852683	-.485252
S.E. of ξ_{λ}	.013292	.0032897	4.04	0.000	.0068444	.0197397
S.E. of ξ_t	-.0221279	.0035741	-6.19	0.000	-.029133	-.0151228

Brazil

Sample: 1950 - 2007

Number of obs = 58

Log likelihood = 118.84452

log MFP	Coef.	Std. Err.	z	P> z	[95% Conf. Interval]	
γ 1981	-.1207987	.0291704	-4.14	0.000	-.1779716	-.0636257
β 1981	-.0231028	.0098635	-2.34	0.019	-.042435	-.0037707
S.E. of ξ_{μ}	.0026364	.0014108	1.87	0.062	-.0001286	.0054014
$\rho \cos(\lambda)$.7330813	4.68e-06	1.6e+05	0.000	.7330721	.7330905
$\rho \sin(\lambda)$.3568044	1.44e-06	2.5e+05	0.000	.3568015	.3568072
S.E. of ξ_{λ}	.0181422	.0035965	5.04	0.000	.0110932	.0251912
S.E. of ξ_t	-.0090068	.0044601	-2.02	0.043	-.0177485	-.0002651

Chile

Sample: 1950 - 2007

Number of obs = 57

Log likelihood = 93.5357

log MFP	Coef.	Std. Err.	z	P> z	[95% Conf. Interval]
γ 1982	-.1585976	.0411957	-3.85	0.000	-.2393397 -.0778556
β 1982	0.06319	.0140235	1.47	0.141	-.0068536 .0481175
S.E. of ξ_{μ}	0.042634	.0017336	2.46	0.014	.0008655 .0076612
$\rho \cos(\lambda)$	7542281	2.89e-06	2.6e+05	0.000	.7542225 .7542338
$\rho \sin(\lambda)$	4502893	1.72e-06	2.6e+05	0.000	.4502859 .
S.E. of ξ_{χ}	.0193095	.0041932	4.60	0.000	.011091 .0275281
S.E. of ξ_i	.0203625	.0039529	5.15	0.000	.0126149 .0281101

Colombia

Sample: 1950 - 2007

Number of obs = 58

Log likelihood = 168.231

log MFP	Coef.	Std. Err.	z	P> z	[95% Conf. Interval]
γ 1982	-.0589079	.0163315	-3.61	0.000	-.090917 -.0268988
β 1982	-.0202486	.0009121	-22.20	0.000	-.0220363 -.0184609
S.E. of ξ_{μ}	3.78e-11	.0001884	0.00	1.000	-.0003692 .0003692
$\rho \cos(\lambda)$.7802297	.052166	14.96	0.000	.6779863 .8824731
$\rho \sin(\lambda)$.3666441	.0603868	6.07	0.000	.2482882 .4850001
S.E. of ξ_{χ}	-.0137002	.0012958	-10.57	0.000	-.0162398 -.0111605
S.E. of ξ_i	-6.98e-10	.0067861	-0.00	1.000	-.0133004 .0133004

Mexico

Sample: 1950 - 2007

Number of obs = 58

Log likelihood = 123.58014

log MFP	Coef.	Std. Err.	z	P> z	[95% Conf. Interval]
γ 1982	-.1558083	.0115221	-13.52	0.000	-.1783912 -.1332254
β 1982	-.0150606	.0007016	-21.46	0.000	-.0164358 -.0136854
S.E. of ξ_{μ}	9.95e-12	.0001558	0.00	1.000	-.0003054 .0003054

$\rho \cos(\lambda)$.7152843	2.40e-06	3.0e+05	0.000	.7152796	.715289
$\rho \sin(\lambda)$.6461949	4.06e-06	1.6e+05	0.000	.6462028	.6461869
S.E. of ξ_{χ}		.0047896	.0015288	3.13	0.002	.0077859	.0017933
-----+							
S.E. of ξ_t		-.019532	.002262	-8.63	0.000	-.0239654	-.0150986

Peru

Sample: 1950 - 2007

Number of obs = 58

Log likelihood = 89.85937

log MFP		Coef.	Std. Err.	z	P> z	[95% Conf. Interval]	
γ_{1982}		-.0245013	.0455782	-0.54	0.591	-.1138329 .0648302	
β_{1982}		-.0336053	.0225792	-1.49	0.137	-.0778597 .0106492	
S.E. of ξ_{μ}		.0076486	.002554	2.99	0.003	.0026427 .0126544	
-----+							
$\rho \cos(\lambda)$.6275314	2.78e-06	2.3e+05	0.000	.6275259 .6275368	
$\rho \sin(\lambda)$.5331292	2.36e-06	2.3e+05	0.000	.5331246 .5331338	
S.E. of ξ_{χ}		.0298896	.0030726	9.73	0.000	.0359118 .0238673	
-----+							
S.E. of ξ_t		2.89e-32	.0116013	0.00	1.000	-.0227381 .0227381	

Uruguay

Sample: 1950 - 2007

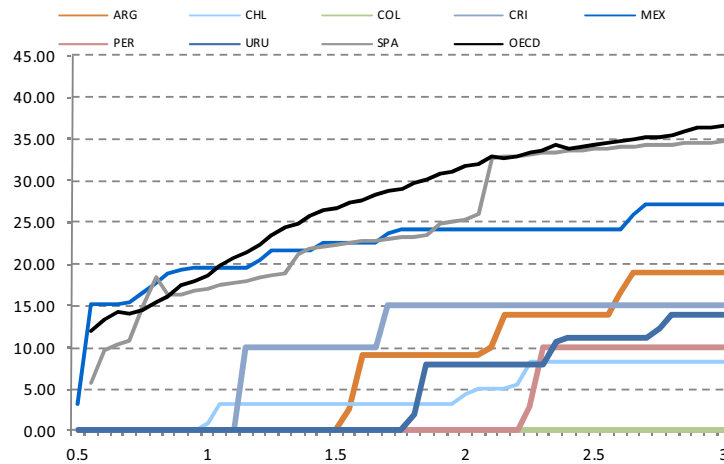
Number of obs = 58

Log likelihood = 89.822777

log MFP		Coef.	Std. Err.	z	P> z	[95% Conf. Interval]	
γ_{1982}		-.0956271	.0450603	-2.12	0.034	-.1839436 -.0073105	
β_{1982}		.0032569	.0192269	0.17	0.865	-.0344272 .040941	
S.E. of ξ_{μ}		.0052465	.0025954	2.02	0.043	.0001596 .0103334	
-----+							
$\rho \cos(\lambda)$.7841392	3.36e-06	2.3e+05	0.000	.7841326 .7841458	
$\rho \sin(\lambda)$.3442606	2.25e-06	1.5e+05	0.000	.3442562 .344265	
S.E. of ξ_{χ}		.0352872	.0035362	9.98	0.000	.0283563 .0422181	
-----+							
S.E. of ξ_t		2.72e-07	.0103452	0.00	1.000	-.020276 .0202765	

A.2. Tax rates

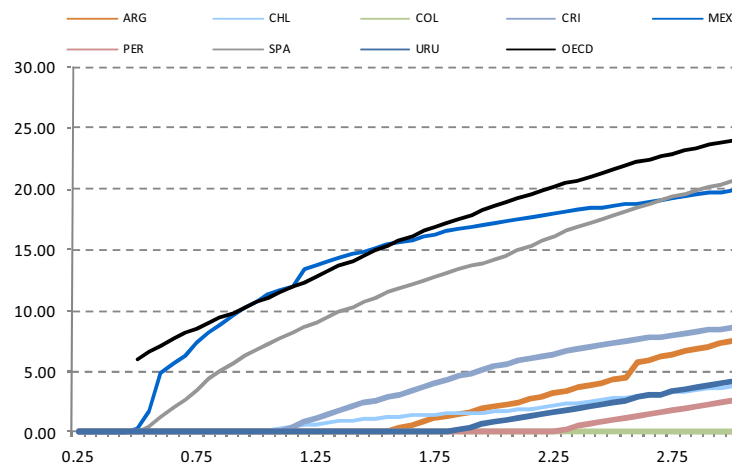
Figure A.1. Marginal personal income tax by income levels
(Percentage)



Note: Marginal tax rate by household labour income level. 1 represents the national average. OECD unweighted average, excluding Chile and Mexico

Source: Authors' calculations based on OECD Taxing Wages (Mexico), Ministries of Finance (Chile and Uruguay) and own elaboration (Argentina, Colombia, Costa Rica and Peru)

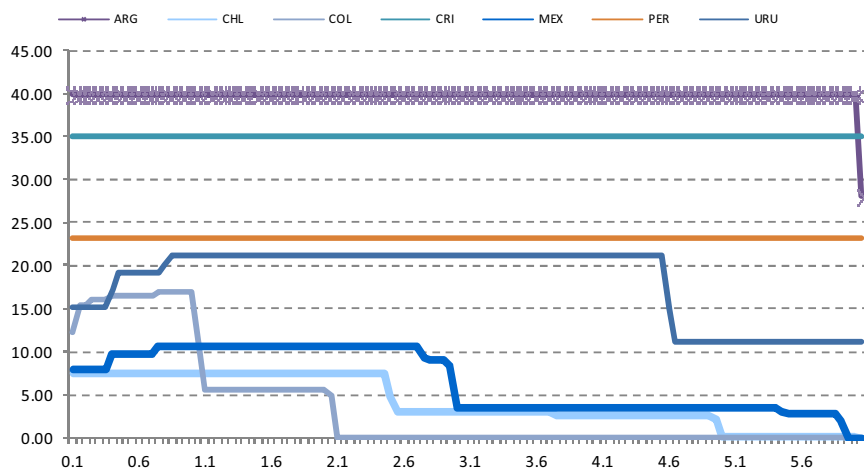
Figure A.2. Average personal income tax by income levels
(Percentage)



Note: Average tax rate by household labour income level. 1 represents the national average. OECD unweighted average, excluding Chile and Mexico

Source: Authors' calculations based on OECD Taxing Wages (Mexico), Ministries of Finance (Chile and Uruguay) and own elaboration (Argentina, Colombia, Costa Rica and Peru)

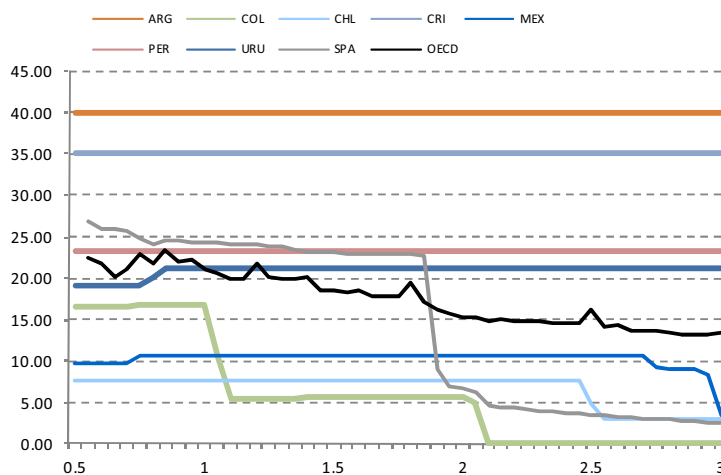
Figure A.3. Marginal social contribution tax by income levels
(Percentage)



Note: Marginal tax rate by household labour income level. 1 represents the national average

Source: Authors' calculations based on OECD Taxing Wages (Mexico), Ministries of Finance (Chile and Uruguay) and own elaboration (Argentina, Colombia, Costa Rica and Peru)

Figure A.4. Average social contribution tax by income levels
(Percentage)



Note: Average tax rate by household labour income level. 1 represents the national average. OECD unweighted average, excluding Chile and Mexico

Source: Authors' calculations based on OECD Taxing Wages (Mexico), Ministries of Finance (Chile and Uruguay) and own elaboration (Argentina, Colombia, Costa Rica and Peru)

Table A.1. General government revenues (Percentage points of GDP)

	Tax					Current primary revenue	
	Corporate	Personal	Indirect	Social security	Total	Non-tax revenue	Total
Argentina	3.5	1.5	11.6	3.8	20.4	2.8	23.2
Brazil	3.4	0.3	14.2	8.1	26.1	4.8	30.9
Chile	5.5	1.0	9.4	1.4	17.2	8.1	25.3
Colombia	5.7	0.2	5.6	2.2	15.6	12.6	28.2
Costa Rica	3.2	1.3	8.9	6.4	19.8	2.7	22.5
Mexico	2.3	2.0	3.7	1.3	9.3	13.3	22.6
Peru	5.2	1.4	7.0	1.6	15.1	3.1	18.2
Uruguay	2.6	1.9	10.1	6.2	20.8	6.2	27.0
France	2.2	9.0	15.1	18.5	44.7	4.6	49.4
Germany	0.8	9.8	12.0	18.6	41.1	3.1	44.2
Italy	2.5	11.2	14.5	13.1	41.3	2.6	44.0
Japan	2.9	4.6	8.3	10.6	26.3	1.5	27.8
Korea	3.1	4.0	12.8	4.7	24.5	3.1	27.7
Spain	3.4	7.2	12.0	13.7	36.2	2.7	38.9
United Kingdom	2.9	12.5	13.3	7.8	36.4	3.0	39.4
United States	2.1	9.1	7.3	7.0	25.4	4.9	30.4

Note: Data is referred to 2003 for the OECD excluding Chile and Mexico, 2008 for Uruguay and 2006 for Latin America

Source: ECLAC-ILPES and IDB databases, and Girouard and André (2005)

Table A.2. Tax elasticities

	Corporate Income Tax	Personal Income Tax	Indirect Taxes	Social Security Contributions	Total over cyc-adj taxes	Total over GDP
Argentina	0.83	3.61	1.00	1.08	1.16	0.27
Brazil	1.17	2.72	1.00	1.44	0.95	0.25
Chile	0.66	3.51	1.00	1.30	1.30	0.14
Colombia	0.96	2.65	1.00	0.55	0.94	0.14
Costa Rica	0.27	4.49	1.00	1.67	1.31	0.27
Mexico	0.69	2.95	1.00	0.76	1.29	0.13
Peru	0.38	5.33	1.00	1.94	1.54	0.18
Uruguay	1.18	2.85	1.00	0.95	1.17	0.25
LAC	0.69	3.61	1.00	1.28	1.22	0.19
Canada	1.55	1.10	1.00	0.56	1.03	0.34
France	1.59	1.18	1.00	0.79	0.98	0.49
Germany	1.53	1.61	1.00	0.57	0.96	0.44
Italy	1.12	1.79	1.00	0.86	1.18	0.40
Japan	1.65	1.17	1.00	0.55	0.92	0.39
Korea	1.52	1.40	1.00	0.51	1.04	0.25
Spain	1.15	1.92	1.00	0.68	1.08	0.39
United Kingdom	1.66	1.18	1.00	0.91	1.10	0.34
United States	1.53	1.30	1.00	0.64	1.05	0.24
OECD	1.47	1.21	1.00	0.71	1.02	0.40

Note: LAC unweighted average. OECD unweighted average, excluding Chile and Mexico

Source: Authors' calculations for Argentina, Chile, Colombia, Costa Rica, Mexico and Uruguay, de Mello and Moccero (2006) for Brazil, and Girouard and André (2005) for the rest

A.3. Commodity series

Argentina

We consider export taxes introduced in 2002 (“Derechos de exportaciones”). All data are available at: <http://www.mecon.gov.ar/sip/basehome/retrib.htm>

Prices come from the IMF commodity price database (food and energy indices) and are weighted according to their importance in exports.

Chile

- Corporate income tax paid by CODELCO
- Transfers from CODELCO to the central government
- Royalties paid by private mining firms

All these data come from DIPRES (www.dipres.cl). The price adjustment is based on a 10-year rolling window average of copper prices from COCHILO (refined copper prices BML/LME in US\$).

Mexico

- PEMEX net income
- Royalties paid by private firms in the petrol sector to the federal government
- Special tax on petrol related income
- Specific net excise tax (IEPS)

All data come from the SHCP (www.apartados.hacienda.gob.mx). The price adjustment is based on a 10-year rolling window oil prices from the IMF commodity price database.

Peru

- Royalties paid by mining sector
- Corporate income tax paid by mining and hydrocarbon sector, petrol refinery, fishing sector, non-metal minerals
- General Internal Sales Tax of same sectors

Prices are taken from the IMF commodity prices database (copper, fishmeal, oil and gold), weighted by importance of sectors in revenues.

REFERENCES

- AGUIAR, M. and G. GOPINATH (2007), "Emerging Market Business Cycles: The Cycle is the Trend", *Journal of Political Economy* 115 (1), pp. 69-102.
- AVENDAÑO, R., H. REISEN and J. SANTISO (2008), "The Macro Management of Commodity Booms: Africa and Latin America's Response to Asian Demand", OECD Development Centre Working Paper No. 270, OECD, Paris.
- CALVO, G.A. (1988), "Servicing the Public Debt: The Role of Expectations", *American Economic Review* 78(4), pp. 647-661.
- COMITÉ TÉCNICO INTERINSTITUCIONAL (2010), *Regla fiscal para Colombia*, Banco de la República Ministerio de Hacienda y Crédito Público y Departamento Nacional de Planeación, Bogotá.
- DE MELLO, L. and D. MOCCERO (2006), "Brazil Fiscal Stance During 1995-2005: The Effect of Indebtedness on Fiscal Policy Over the Business Cycle", OECD Economic Department Working Papers 485, OECD, Paris.
- FATAS, A. and I. MIHOV (2001), "Government Size and Automatic Stabilizers: International and Intranational Evidence", *Journal of International Economics* 55(1), pp. 3-28.
- GALL, J. (1994), "Government Size and Macroeconomic Stability", *European Economic Review* 38(1), pp.117-132.
- GAVIN, M. and R. HAUSMANN (1998), "Fiscal Performance in Latin America: What Needs to be Explained?" in R. HAUSMANN and K. FUKASAKU (eds.), *Democracy, decentralisation and deficits in Latin America*, pp.33-64. Inter-American Development Bank and OECD Development Centre, Paris.
- GAVIN, M. and R. PEROTTI (1997), "Fiscal Policy in Latin America", NBER *Macroeconomics Annual* 12, pp. 11-72 National Bureau of Economic Research.
- GIROUARD, N. and C. ANDRÉ (2005), "Measuring Cyclically-adjusted Budget Balances for OECD Countries", OECD Economic Department Working Papers 434, OECD, Paris.
- GOLLIN, D. (2002), "Getting Income Shares Right", *Journal of Political Economy* 110(2), pp. 458-474.
- HARVEY, A.C. (1989), *Forecasting Structural Time Series Models and the Kalman Filter*, Cambridge University Press, Cambridge.
- HARVEY, A. and A. JAEGER (1993), "Detrending, Stylized Facts, and the Business Cycle", *Journal of Applied Econometrics* 8(3), pp. 231-247.
- HARVEY, A. and T. TRIMBUR (2008), "Trend Estimation and the Hodrick-Prescott Filter", *Journal of Japan Statistical Society* 38(1), pp 41-49.
- HORTON, M., M. KUMAR and P. MAURO (2009), "The State of Public Finances: A Cross-country Fiscal Monitor", IMF Staff Position Note SPN/09/21, International Monetary Fund, Washington, DC.
- ILZETZKI, E. and C.A. VEGH (2008), "Procyclical Fiscal Policy in Developing Countries: Truth or Fiction?", NBER Working Papers 14191, National Bureau of Economic Research.
- IMF (2009): *Companion Paper – The State of Public Finances: Outlook and Medium-term Policies after the 2008 Crisis*, March, International Monetary Fund, Washington, DC.

- IZQUIERDO, A. and E. TALVI (2008), *All That Glitters May Not Be Gold: Assessing Latin America's Recent Macroeconomic Performance*, Inter-American Development Bank, Washington, DC.
- KAMINSKY, G.L., C.M. REINHART and C.A. VEGH (2004), "When It Rains It Pours: Procyclical Capital Flows and Macroeconomic Policies", *NBER Macroeconomics Annual* 19, pp. 11-82. National Bureau of Economic Research.
- LOZANO, I. and J. TORO (2007), "Fiscal Policy Throughout the Business Cycle: The Colombian Experience", *Ensayos sobre Política Económica* 25(55), pp. 12-39.
- MARCEL, M., M. TOKMAN, R. VALDÉS and P. BENAVIDES (2001), "Balance estructural del gobierno central. Metodología y estimaciones para Chile: 1987 – 2000", *Estudios de Finanzas Públicas*, Ministerio de Hacienda, Gobierno de Chile, Santiago.
- MARTNER, R. (2006), "Cyclical Indicators of Fiscal Policy in Latin American Countries (with special reference to Chile)", in D. Franco (ed.): *Fiscal Indicators*, pp.165-180, Banca d'Italia, Rome.
- OECD (2001), *Measuring Productivity - OECD Manual: Measurement of Aggregate and Industry-level Productivity Growth*, OECD, Paris.
- OECD (2008), "The Implications of Supply-side Uncertainties for Economic Policy", *OECD Economic Outlook* 83, pp.209-230. OECD, Paris.
- OECD (2009a), *OECD Economic Outlook* 85. OECD, Paris.
- OECD (2009b), *Latin American Economic Outlook 2010*, OECD Development Centre, Paris.
- RODRÍGUEZ, J., C. TOKMAN and A. VEGA (2007), "Structural Balance Policy in Chile", *OECD Journal on Budgeting* 7(2), pp.59-92.
- SPIILIMBERGO, A., S. SYMANSKY, O. BLANCHARD and C. COTARELLI (2008), "Fiscal Policy for the Crisis", *IMF Staff Position Note* SPN/08/01, International Monetary Fund, Washington, DC.
- TALVI, E. and C.A. VEGH (2005), "Tax Base Variability and Pro-cyclical Fiscal Policy in Developing Countries," *Journal of Development Economics* 78(1), pp.156-190.
- VAN DEN NOORD, P. (2000), "The Size and Role of Automatic Fiscal Stabilizers in the 1990s and Beyond", *OECD Economic Department Working Papers* 230, OECD, Paris.
- VLADKOVA-HOLLAR, I. and J. ZETTELMEYER (2008), "Fiscal Positions in Latin America: Have They Really Improved?", *IMF Working Paper* WP/08/137, International Monetary Fund, Washington DC.

OTHER TITLES IN THE SERIES/ AUTRES TITRES DANS LA SÉRIE

The former series known as “Technical Papers” and “Webdocs” merged in November 2003 into “Development Centre Working Papers”. In the new series, former Webdocs 1-17 follow former Technical Papers 1-212 as Working Papers 213-229.

All these documents may be downloaded from:

<http://www.oecd.org/dev/wp> or obtained via e-mail (dev.contact@oecd.org).

Working Paper No.1, *Macroeconomic Adjustment and Income Distribution: A Macro-Micro Simulation Model*, by François Bourguignon, William H. Branson and Jaime de Melo, March 1989.

Working Paper No. 2, *International Interactions in Food and Agricultural Policies: The Effect of Alternative Policies*, by Joachim Zietz and Alberto Valdés, April, 1989.

Working Paper No. 3, *The Impact of Budget Retrenchment on Income Distribution in Indonesia: A Social Accounting Matrix Application*, by Steven Keuning and Erik Thorbecke, June 1989.

Working Paper No. 3a, *Statistical Annex: The Impact of Budget Retrenchment*, June 1989.

Document de travail No. 4, *Le Rééquilibrage entre le secteur public et le secteur privé : le cas du Mexique*, par C.-A. Michalet, juin 1989.

Working Paper No. 5, *Rebalancing the Public and Private Sectors: The Case of Malaysia*, by R. Leeds, July 1989.

Working Paper No. 6, *Efficiency, Welfare Effects and Political Feasibility of Alternative Antipoverty and Adjustment Programs*, by Alain de Janvry and Elisabeth Sadoulet, December 1989.

Document de travail No. 7, *Ajustement et distribution des revenus : application d'un modèle macro-micro au Maroc*, par Christian Morriçon, avec la collaboration de Sylvie Lambert et Akiko Suwa, décembre 1989.

Working Paper No. 8, *Emerging Maize Biotechnologies and their Potential Impact*, by W. Burt Sundquist, December 1989.

Document de travail No. 9, *Analyse des variables socio-culturelles et de l'ajustement en Côte d'Ivoire*, par W. Weekes-Vagliani, janvier 1990.

Working Paper No. 10, *A Financial CompuTable General Equilibrium Model for the Analysis of Ecuador's Stabilization Programs*, by André Fargeix and Elisabeth Sadoulet, February 1990.

Working Paper No. 11, *Macroeconomic Aspects, Foreign Flows and Domestic Savings Performance in Developing Countries: A "State of The Art" Report*, by Anand Chandavarkar, February 1990.

Working Paper No. 12, *Tax Revenue Implications of the Real Exchange Rate: Econometric Evidence from Korea and Mexico*, by Virginia Fierro and Helmut Reisen, February 1990.

Working Paper No. 13, *Agricultural Growth and Economic Development: The Case of Pakistan*, by Naved Hamid and Wouter Tims, April 1990.

Working Paper No. 14, *Rebalancing the Public and Private Sectors in Developing Countries: The Case of Ghana*, by H. Akuoko-Frimpong, June 1990.

Working Paper No. 15, *Agriculture and the Economic Cycle: An Economic and Econometric Analysis with Special Reference to Brazil*, by Florence Contré and Ian Goldin, June 1990.

Working Paper No. 16, *Comparative Advantage: Theory and Application to Developing Country Agriculture*, by Ian Goldin, June 1990.

Working Paper No. 17, *Biotechnology and Developing Country Agriculture: Maize in Brazil*, by Bernardo Sorj and John Wilkinson, June 1990.

Working Paper No. 18, *Economic Policies and Sectoral Growth: Argentina 1913-1984*, by Yair Mundlak, Domingo Cavallo, Roberto Domenech, June 1990.

Working Paper No. 19, *Biotechnology and Developing Country Agriculture: Maize In Mexico*, by Jaime A. Matus Gardea, Arturo Puente Gonzalez and Cristina Lopez Peralta, June 1990.

Working Paper No. 20, *Biotechnology and Developing Country Agriculture: Maize in Thailand*, by Suthad Setboonsarng, July 1990.

Working Paper No. 21, *International Comparisons of Efficiency in Agricultural Production*, by Guillermo Flichmann, July 1990.

- Working Paper No. 22, *Unemployment in Developing Countries: New Light on an Old Problem*, by David Turnham and Denizhan Eröcal, July 1990.
- Working Paper No. 23, *Optimal Currency Composition of Foreign Debt: the Case of Five Developing Countries*, by Pier Giorgio Gawronski, August 1990.
- Working Paper No. 24, *From Globalization to Regionalization: the Mexican Case*, by Wilson Peres Núñez, August 1990.
- Working Paper No. 25, *Electronics and Development in Venezuela: A User-Oriented Strategy and its Policy Implications*, by Carlota Perez, October 1990.
- Working Paper No. 26, *The Legal Protection of Software: Implications for Latecomer Strategies in Newly Industrialising Economies (NIEs) and Middle-Income Economies (MIEs)*, by Carlos Maria Correa, October 1990.
- Working Paper No. 27, *Specialization, Technical Change and Competitiveness in the Brazilian Electronics Industry*, by Claudio R. Frischtak, October 1990.
- Working Paper No. 28, *Internationalization Strategies of Japanese Electronics Companies: Implications for Asian Newly Industrializing Economies (NIEs)*, by Bundo Yamada, October 1990.
- Working Paper No. 29, *The Status and an Evaluation of the Electronics Industry in Taiwan*, by Gee San, October 1990.
- Working Paper No. 30, *The Indian Electronics Industry: Current Status, Perspectives and Policy Options*, by Ghayur Alam, October 1990.
- Working Paper No. 31, *Comparative Advantage in Agriculture in Ghana*, by James Pickett and E. Shaeeldin, October 1990.
- Working Paper No. 32, *Debt Overhang, Liquidity Constraints and Adjustment Incentives*, by Bert Hofman and Helmut Reisen, October 1990.
- Working Paper No. 34, *Biotechnology and Developing Country Agriculture: Maize in Indonesia*, by Hidjat Nataatmadja *et al.*, January 1991.
- Working Paper No. 35, *Changing Comparative Advantage in Thai Agriculture*, by Ammar Siamwalla, Suthad Setboonsarng and Prasong Werakarnjanapongs, March 1991.
- Working Paper No. 36, *Capital Flows and the External Financing of Turkey's Imports*, by Ziya Önis and Süleyman Özmucur, July 1991.
- Working Paper No. 37, *The External Financing of Indonesia's Imports*, by Glenn P. Jenkins and Henry B.F. Lim, July 1991.
- Working Paper No. 38, *Long-term Capital Reflow under Macroeconomic Stabilization in Latin America*, by Beatriz Armendariz de Aghion, July 1991.
- Working Paper No. 39, *Buybacks of LDC Debt and the Scope for Forgiveness*, by Beatriz Armendariz de Aghion, July 1991.
- Working Paper No. 40, *Measuring and Modelling Non-Tariff Distortions with Special Reference to Trade in Agricultural Commodities*, by Peter J. Lloyd, July 1991.
- Working Paper No. 41, *The Changing Nature of IMF Conditionality*, by Jacques J. Polak, August 1991.
- Working Paper No. 42, *Time-Varying Estimates on the Openness of the Capital Account in Korea and Taiwan*, by Helmut Reisen and Hélène Yèches, August 1991.
- Working Paper No. 43, *Toward a Concept of Development Agreements*, by F. Gerard Adams, August 1991.
- Document de travail No. 44, *Le Partage du fardeau entre les créanciers de pays débiteurs défaillants*, par Jean-Claude Berthélemy et Ann Vourc'h, septembre 1991.
- Working Paper No. 45, *The External Financing of Thailand's Imports*, by Supote Chunanunthathum, October 1991.
- Working Paper No. 46, *The External Financing of Brazilian Imports*, by Enrico Colombatto, with Elisa Luciano, Luca Gargiulo, Pietro Garibaldi and Giuseppe Russo, October 1991.
- Working Paper No. 47, *Scenarios for the World Trading System and their Implications for Developing Countries*, by Robert Z. Lawrence, November 1991.
- Working Paper No. 48, *Trade Policies in a Global Context: Technical Specifications of the Rural/Urban-North/South (RUNS) Applied General Equilibrium Model*, by Jean-Marc Burniaux and Dominique van der Mensbrugghe, November 1991.
- Working Paper No. 49, *Macro-Micro Linkages: Structural Adjustment and Fertilizer Policy in Sub-Saharan Africa*, by Jean-Marc Fontaine with the collaboration of Alice Sindzingre, December 1991.
- Working Paper No. 50, *Aggregation by Industry in General Equilibrium Models with International Trade*, by Peter J. Lloyd, December 1991.
- Working Paper No. 51, *Policy and Entrepreneurial Responses to the Montreal Protocol: Some Evidence from the Dynamic Asian Economies*, by David C. O'Connor, December 1991.
- Working Paper No. 52, *On the Pricing of LDC Debt: an Analysis Based on Historical Evidence from Latin America*, by Beatriz Armendariz de Aghion, February 1992.
- Working Paper No. 53, *Economic Regionalisation and Intra-Industry Trade: Pacific-Asian Perspectives*, by Kiichiro Fukasaku, February 1992.
- Working Paper No. 54, *Debt Conversions in Yugoslavia*, by Mojmir Mrak, February 1992.
- Working Paper No. 55, *Evaluation of Nigeria's Debt-Relief Experience (1985-1990)*, by N.E. Ogbe, March 1992.
- Document de travail No. 56, *L'Expérience de l'allègement de la dette du Mali*, par Jean-Claude Berthélemy, février 1992.
- Working Paper No. 57, *Conflict or Indifference: US Multinationals in a World of Regional Trading Blocs*, by Louis T. Wells, Jr., March 1992.
- Working Paper No. 58, *Japan's Rapidly Emerging Strategy Toward Asia*, by Edward J. Lincoln, April 1992.
- Working Paper No. 59, *The Political Economy of Stabilization Programmes in Developing Countries*, by Bruno S. Frey and Reiner Eichenberger, April 1992.
- Working Paper No. 60, *Some Implications of Europe 1992 for Developing Countries*, by Sheila Page, April 1992.

- Working Paper No. 61, *Taiwanese Corporations in Globalisation and Regionalisation*, by Gee San, April 1992.
- Working Paper No. 62, *Lessons from the Family Planning Experience for Community-Based Environmental Education*, by Winifred Weekes-Vagliani, April 1992.
- Working Paper No. 63, *Mexican Agriculture in the Free Trade Agreement: Transition Problems in Economic Reform*, by Santiago Levy and Sweder van Wijnbergen, May 1992.
- Working Paper No. 64, *Offensive and Defensive Responses by European Multinationals to a World of Trade Blocs*, by John M. Stopford, May 1992.
- Working Paper No. 65, *Economic Integration in the Pacific Region*, by Richard Drobnick, May 1992.
- Working Paper No. 66, *Latin America in a Changing Global Environment*, by Winston Fritsch, May 1992.
- Working Paper No. 67, *An Assessment of the Brady Plan Agreements*, by Jean-Claude Berthélemy and Robert Lensink, May 1992.
- Working Paper No. 68, *The Impact of Economic Reform on the Performance of the Seed Sector in Eastern and Southern Africa*, by Elizabeth Cromwell, June 1992.
- Working Paper No. 69, *Impact of Structural Adjustment and Adoption of Technology on Competitiveness of Major Cocoa Producing Countries*, by Emily M. Bloomfield and R. Antony Lass, June 1992.
- Working Paper No. 70, *Structural Adjustment and Moroccan Agriculture: an Assessment of the Reforms in the Sugar and Cereal Sectors*, by Jonathan Kydd and Sophie Thoyer, June 1992.
- Document de travail No. 71, *L'Allègement de la dette au Club de Paris : les évolutions récentes en perspective*, par Ann Vourc'h, juin 1992.
- Working Paper No. 72, *Biotechnology and the Changing Public/Private Sector Balance: Developments in Rice and Cocoa*, by Carliene Brenner, July 1992.
- Working Paper No. 73, *Namibian Agriculture: Policies and Prospects*, by Walter Elkan, Peter Amutenya, Jochbeth Andima, Robin Sherbourne and Eline van der Linden, July 1992.
- Working Paper No. 74, *Agriculture and the Policy Environment: Zambia and Zimbabwe*, by Doris J. Jansen and Andrew Rukovo, July 1992.
- Working Paper No. 75, *Agricultural Productivity and Economic Policies: Concepts and Measurements*, by Yair Mundlak, August 1992.
- Working Paper No. 76, *Structural Adjustment and the Institutional Dimensions of Agricultural Research and Development in Brazil: Soybeans, Wheat and Sugar Cane*, by John Wilkinson and Bernardo Sorj, August 1992.
- Working Paper No. 77, *The Impact of Laws and Regulations on Micro and Small Enterprises in Niger and Swaziland*, by Isabelle Joumard, Carl Liedholm and Donald Mead, September 1992.
- Working Paper No. 78, *Co-Financing Transactions between Multilateral Institutions and International Banks*, by Michel Bouchet and Amit Ghose, October 1992.
- Document de travail No. 79, *Allègement de la dette et croissance : le cas mexicain*, par Jean-Claude Berthélemy et Ann Vourc'h, octobre 1992.
- Document de travail No. 80, *Le Secteur informel en Tunisie : cadre réglementaire et pratique courante*, par Abderrahman Ben Zakour et Farouk Kria, novembre 1992.
- Working Paper No. 81, *Small-Scale Industries and Institutional Framework in Thailand*, by Naruemol Bunjongjit and Xavier Oudin, November 1992.
- Working Paper No. 81a, *Statistical Annex: Small-Scale Industries and Institutional Framework in Thailand*, by Naruemol Bunjongjit and Xavier Oudin, November 1992.
- Document de travail No. 82, *L'Expérience de l'allègement de la dette du Niger*, par Ann Vourc'h et Maina Boukar Moussa, novembre 1992.
- Working Paper No. 83, *Stabilization and Structural Adjustment in Indonesia: an Intertemporal General Equilibrium Analysis*, by David Roland-Holst, November 1992.
- Working Paper No. 84, *Striving for International Competitiveness: Lessons from Electronics for Developing Countries*, by Jan Maarten de Vet, March 1993.
- Document de travail No. 85, *Micro-entreprises et cadre institutionnel en Algérie*, par Hocine Benissad, mars 1993.
- Working Paper No. 86, *Informal Sector and Regulations in Ecuador and Jamaica*, by Emilio Klein and Victor E. Tokman, August 1993.
- Working Paper No. 87, *Alternative Explanations of the Trade-Output Correlation in the East Asian Economies*, by Colin I. Bradford Jr. and Naomi Chakwin, August 1993.
- Document de travail No. 88, *La Faisabilité politique de l'ajustement dans les pays africains*, par Christian Morrisson, Jean-Dominique Lafay et Sébastien Dessus, novembre 1993.
- Working Paper No. 89, *China as a Leading Pacific Economy*, by Kiichiro Fukasaku and Mingyuan Wu, November 1993.
- Working Paper No. 90, *A Detailed Input-Output Table for Morocco, 1990*, by Maurizio Bussolo and David Roland-Holst, November 1993.
- Working Paper No. 91, *International Trade and the Transfer of Environmental Costs and Benefits*, by Hiro Lee and David Roland-Holst, December 1993.
- Working Paper No. 92, *Economic Instruments in Environmental Policy: Lessons from the OECD Experience and their Relevance to Developing Economies*, by Jean-Philippe Barde, January 1994.
- Working Paper No. 93, *What Can Developing Countries Learn from OECD Labour Market Programmes and Policies?*, by Åsa Sohlman with David Turnham, January 1994.

- Working Paper No. 94, *Trade Liberalization and Employment Linkages in the Pacific Basin*, by Hiro Lee and David Roland-Holst, February 1994.
- Working Paper No. 95, *Participatory Development and Gender: Articulating Concepts and Cases*, by Winifred Weekes-Vagliani, February 1994.
- Document de travail No. 96, *Promouvoir la maîtrise locale et régionale du développement : une démarche participative à Madagascar*, par Philippe de Rham et Bernard Lecomte, juin 1994.
- Working Paper No. 97, *The OECD Green Model: an Updated Overview*, by Hiro Lee, Joaquim Oliveira-Martins and Dominique van der Mensbrugge, August 1994.
- Working Paper No. 98, *Pension Funds, Capital Controls and Macroeconomic Stability*, by Helmut Reisen and John Williamson, August 1994.
- Working Paper No. 99, *Trade and Pollution Linkages: Piecemeal Reform and Optimal Intervention*, by John Beghin, David Roland-Holst and Dominique van der Mensbrugge, October 1994.
- Working Paper No. 100, *International Initiatives in Biotechnology for Developing Country Agriculture: Promises and Problems*, by Carliene Brenner and John Komen, October 1994.
- Working Paper No. 101, *Input-based Pollution Estimates for Environmental Assessment in Developing Countries*, by Sébastien Dessus, David Roland-Holst and Dominique van der Mensbrugge, October 1994.
- Working Paper No. 102, *Transitional Problems from Reform to Growth: Safety Nets and Financial Efficiency in the Adjusting Egyptian Economy*, by Mahmoud Abdel-Fadil, December 1994.
- Working Paper No. 103, *Biotechnology and Sustainable Agriculture: Lessons from India*, by Ghayur Alam, December 1994.
- Working Paper No. 104, *Crop Biotechnology and Sustainability: a Case Study of Colombia*, by Luis R. Sanint, January 1995.
- Working Paper No. 105, *Biotechnology and Sustainable Agriculture: the Case of Mexico*, by José Luis Solleiro Rebolledo, January 1995.
- Working Paper No. 106, *Empirical Specifications for a General Equilibrium Analysis of Labour Market Policies and Adjustments*, by Andréa Maechler and David Roland-Holst, May 1995.
- Document de travail No. 107, *Les Migrants, partenaires de la coopération internationale : le cas des Maliens de France*, par Christophe Daum, juillet 1995.
- Document de travail No. 108, *Ouverture et croissance industrielle en Chine : étude empirique sur un échantillon de villes*, par Sylvie Démurger, septembre 1995.
- Working Paper No. 109, *Biotechnology and Sustainable Crop Production in Zimbabwe*, by John J. Woodend, December 1995.
- Document de travail No. 110, *Politiques de l'environnement et libéralisation des échanges au Costa Rica : une vue d'ensemble*, par Sébastien Dessus et Maurizio Bussolo, février 1996.
- Working Paper No. 111, *Grow Now/Clean Later, or the Pursuit of Sustainable Development?*, by David O'Connor, March 1996.
- Working Paper No. 112, *Economic Transition and Trade-Policy Reform: Lessons from China*, by Kiichiro Fukasaku and Henri-Bernard Solignac Lecomte, July 1996.
- Working Paper No. 113, *Chinese Outward Investment in Hong Kong: Trends, Prospects and Policy Implications*, by Yun-Wing Sung, July 1996.
- Working Paper No. 114, *Vertical Intra-industry Trade between China and OECD Countries*, by Lisbeth Hellvin, July 1996.
- Document de travail No. 115, *Le Rôle du capital public dans la croissance des pays en développement au cours des années 80*, par Sébastien Dessus et Rémy Herrera, juillet 1996.
- Working Paper No. 116, *General Equilibrium Modelling of Trade and the Environment*, by John Beghin, Sébastien Dessus, David Roland-Holst and Dominique van der Mensbrugge, September 1996.
- Working Paper No. 117, *Labour Market Aspects of State Enterprise Reform in Viet Nam*, by David O'Connor, September 1996.
- Document de travail No. 118, *Croissance et compétitivité de l'industrie manufacturière au Sénégal*, par Thierry Latreille et Aristomène Varoudakis, octobre 1996.
- Working Paper No. 119, *Evidence on Trade and Wages in the Developing World*, by Donald J. Robbins, December 1996.
- Working Paper No. 120, *Liberalising Foreign Investments by Pension Funds: Positive and Normative Aspects*, by Helmut Reisen, January 1997.
- Document de travail No. 121, *Capital Humain, ouverture extérieure et croissance : estimation sur données de panel d'un modèle à coefficients variables*, par Jean-Claude Berthélemy, Sébastien Dessus et Aristomène Varoudakis, janvier 1997.
- Working Paper No. 122, *Corruption: The Issues*, by Andrew W. Goudie and David Stasavage, January 1997.
- Working Paper No. 123, *Outflows of Capital from China*, by David Wall, March 1997.
- Working Paper No. 124, *Emerging Market Risk and Sovereign Credit Ratings*, by Guillermo Larraín, Helmut Reisen and Julia von Maltzan, April 1997.
- Working Paper No. 125, *Urban Credit Co-operatives in China*, by Eric Girardin and Xie Ping, August 1997.
- Working Paper No. 126, *Fiscal Alternatives of Moving from Unfunded to Funded Pensions*, by Robert Holzmann, August 1997.
- Working Paper No. 127, *Trade Strategies for the Southern Mediterranean*, by Peter A. Petri, December 1997.
- Working Paper No. 128, *The Case of Missing Foreign Investment in the Southern Mediterranean*, by Peter A. Petri, December 1997.
- Working Paper No. 129, *Economic Reform in Egypt in a Changing Global Economy*, by Joseph Licari, December 1997.

- Working Paper No. 130, *Do Funded Pensions Contribute to Higher Aggregate Savings? A Cross-Country Analysis*, by Jeanine Bailliu and Helmut Reisen, December 1997.
- Working Paper No. 131, *Long-run Growth Trends and Convergence Across Indian States*, by Rayaprolu Nagaraj, Aristomène Varoudakis and Marie-Ange Véganzonès, January 1998.
- Working Paper No. 132, *Sustainable and Excessive Current Account Deficits*, by Helmut Reisen, February 1998.
- Working Paper No. 133, *Intellectual Property Rights and Technology Transfer in Developing Country Agriculture: Rhetoric and Reality*, by Carliene Brenner, March 1998.
- Working Paper No. 134, *Exchange-rate Management and Manufactured Exports in Sub-Saharan Africa*, by Khalid Sekkat and Aristomène Varoudakis, March 1998.
- Working Paper No. 135, *Trade Integration with Europe, Export Diversification and Economic Growth in Egypt*, by Sébastien Dessus and Akiko Suwa-Eisenmann, June 1998.
- Working Paper No. 136, *Domestic Causes of Currency Crises: Policy Lessons for Crisis Avoidance*, by Helmut Reisen, June 1998.
- Working Paper No. 137, *A Simulation Model of Global Pension Investment*, by Landis MacKellar and Helmut Reisen, August 1998.
- Working Paper No. 138, *Determinants of Customs Fraud and Corruption: Evidence from Two African Countries*, by David Stasavage and Cécile Daubrée, August 1998.
- Working Paper No. 139, *State Infrastructure and Productive Performance in Indian Manufacturing*, by Arup Mitra, Aristomène Varoudakis and Marie-Ange Véganzonès, August 1998.
- Working Paper No. 140, *Rural Industrial Development in Viet Nam and China: A Study in Contrasts*, by David O'Connor, September 1998.
- Working Paper No. 141, *Labour Market Aspects of State Enterprise Reform in China*, by Fan Gang, Maria Rosa Lunati and David O'Connor, October 1998.
- Working Paper No. 142, *Fighting Extreme Poverty in Brazil: The Influence of Citizens' Action on Government Policies*, by Fernanda Lopes de Carvalho, November 1998.
- Working Paper No. 143, *How Bad Governance Impedes Poverty Alleviation in Bangladesh*, by Rehman Sobhan, November 1998.
- Document de travail No. 144, *La libéralisation de l'agriculture tunisienne et l'Union européenne: une vue prospective*, par Mohamed Abdelbasset Chemingui et Sébastien Dessus, février 1999.
- Working Paper No. 145, *Economic Policy Reform and Growth Prospects in Emerging African Economies*, by Patrick Guillaumont, Sylviane Guillaumont Jeanneney and Aristomène Varoudakis, March 1999.
- Working Paper No. 146, *Structural Policies for International Competitiveness in Manufacturing: The Case of Cameroon*, by Ludvig Söderling, March 1999.
- Working Paper No. 147, *China's Unfinished Open-Economy Reforms: Liberalisation of Services*, by Kiichiro Fukasaku, Yu Ma and Qiumei Yang, April 1999.
- Working Paper No. 148, *Boom and Bust and Sovereign Ratings*, by Helmut Reisen and Julia von Maltzan, June 1999.
- Working Paper No. 149, *Economic Opening and the Demand for Skills in Developing Countries: A Review of Theory and Evidence*, by David O'Connor and Maria Rosa Lunati, June 1999.
- Working Paper No. 150, *The Role of Capital Accumulation, Adjustment and Structural Change for Economic Take-off: Empirical Evidence from African Growth Episodes*, by Jean-Claude Berthélemy and Ludvig Söderling, July 1999.
- Working Paper No. 151, *Gender, Human Capital and Growth: Evidence from Six Latin American Countries*, by Donald J. Robbins, September 1999.
- Working Paper No. 152, *The Politics and Economics of Transition to an Open Market Economy in Viet Nam*, by James Riedel and William S. Turley, September 1999.
- Working Paper No. 153, *The Economics and Politics of Transition to an Open Market Economy: China*, by Wing Thye Woo, October 1999.
- Working Paper No. 154, *Infrastructure Development and Regulatory Reform in Sub-Saharan Africa: The Case of Air Transport*, by Andrea E. Goldstein, October 1999.
- Working Paper No. 155, *The Economics and Politics of Transition to an Open Market Economy: India*, by Ashok V. Desai, October 1999.
- Working Paper No. 156, *Climate Policy Without Tears: CGE-Based Ancillary Benefits Estimates for Chile*, by Sébastien Dessus and David O'Connor, November 1999.
- Document de travail No. 157, *Dépenses d'éducation, qualité de l'éducation et pauvreté : l'exemple de cinq pays d'Afrique francophone*, par Katharina Michaelowa, avril 2000.
- Document de travail No. 158, *Une estimation de la pauvreté en Afrique subsaharienne d'après les données anthropométriques*, par Christian Morisson, Hélène Guilmeau et Charles Linskens, mai 2000.
- Working Paper No. 159, *Converging European Transitions*, by Jorge Braga de Macedo, July 2000.
- Working Paper No. 160, *Capital Flows and Growth in Developing Countries: Recent Empirical Evidence*, by Marcelo Soto, July 2000.
- Working Paper No. 161, *Global Capital Flows and the Environment in the 21st Century*, by David O'Connor, July 2000.
- Working Paper No. 162, *Financial Crises and International Architecture: A "Eurocentric" Perspective*, by Jorge Braga de Macedo, August 2000.
- Document de travail No. 163, *Résoudre le problème de la dette : de l'initiative PPTE à Cologne*, par Anne Joseph, août 2000.
- Working Paper No. 164, *E-Commerce for Development: Prospects and Policy Issues*, by Andrea Goldstein and David O'Connor, September 2000.

- Working Paper No. 165, *Negative Alchemy? Corruption and Composition of Capital Flows*, by Shang-Jin Wei, October 2000.
- Working Paper No. 166, *The HIPC Initiative: True and False Promises*, by Daniel Cohen, October 2000.
- Document de travail No. 167, *Les facteurs explicatifs de la malnutrition en Afrique subsaharienne*, par Christian Morrisson et Charles Linskens, octobre 2000.
- Working Paper No. 168, *Human Capital and Growth: A Synthesis Report*, by Christopher A. Pissarides, November 2000.
- Working Paper No. 169, *Obstacles to Expanding Intra-African Trade*, by Roberto Longo and Khalid Sekkat, March 2001.
- Working Paper No. 170, *Regional Integration In West Africa*, by Ernest Aryeetey, March 2001.
- Working Paper No. 171, *Regional Integration Experience in the Eastern African Region*, by Andrea Goldstein and Njuguna S. Ndung'u, March 2001.
- Working Paper No. 172, *Integration and Co-operation in Southern Africa*, by Carolyn Jenkins, March 2001.
- Working Paper No. 173, *FDI in Sub-Saharan Africa*, by Ludger Odenthal, March 2001
- Document de travail No. 174, *La réforme des télécommunications en Afrique subsaharienne*, par Patrick Plane, mars 2001.
- Working Paper No. 175, *Fighting Corruption in Customs Administration: What Can We Learn from Recent Experiences?*, by Irène Hors; April 2001.
- Working Paper No. 176, *Globalisation and Transformation: Illusions and Reality*, by Grzegorz W. Kolodko, May 2001.
- Working Paper No. 177, *External Solvency, Dollarisation and Investment Grade: Towards a Virtuous Circle?*, by Martin Grandes, June 2001.
- Document de travail No. 178, *Congo 1965-1999: Les espoirs déçus du « Brésil africain »*, par Joseph Maton avec Henri-Bernard Solignac Lecomte, septembre 2001.
- Working Paper No. 179, *Growth and Human Capital: Good Data, Good Results*, by Daniel Cohen and Marcelo Soto, September 2001.
- Working Paper No. 180, *Corporate Governance and National Development*, by Charles P. Oman, October 2001.
- Working Paper No. 181, *How Globalisation Improves Governance*, by Federico Bonaglia, Jorge Braga de Macedo and Maurizio Bussolo, November 2001.
- Working Paper No. 182, *Clearing the Air in India: The Economics of Climate Policy with Ancillary Benefits*, by Maurizio Bussolo and David O'Connor, November 2001.
- Working Paper No. 183, *Globalisation, Poverty and Inequality in sub-Saharan Africa: A Political Economy Appraisal*, by Yvonne M. Tsikata, December 2001.
- Working Paper No. 184, *Distribution and Growth in Latin America in an Era of Structural Reform: The Impact of Globalisation*, by Samuel A. Morley, December 2001.
- Working Paper No. 185, *Globalisation, Liberalisation, Poverty and Income Inequality in Southeast Asia*, by K.S. Jomo, December 2001.
- Working Paper No. 186, *Globalisation, Growth and Income Inequality: The African Experience*, by Steve Kayizzi-Mugerwa, December 2001.
- Working Paper No. 187, *The Social Impact of Globalisation in Southeast Asia*, by Mari Pangestu, December 2001.
- Working Paper No. 188, *Where Does Inequality Come From? Ideas and Implications for Latin America*, by James A. Robinson, December 2001.
- Working Paper No. 189, *Policies and Institutions for E-Commerce Readiness: What Can Developing Countries Learn from OECD Experience?*, by Paulo Bastos Tigre and David O'Connor, April 2002.
- Document de travail No. 190, *La réforme du secteur financier en Afrique*, par Anne Joseph, juillet 2002.
- Working Paper No. 191, *Virtuous Circles? Human Capital Formation, Economic Development and the Multinational Enterprise*, by Ethan B. Kapstein, August 2002.
- Working Paper No. 192, *Skill Upgrading in Developing Countries: Has Inward Foreign Direct Investment Played a Role?*, by Matthew J. Slaughter, August 2002.
- Working Paper No. 193, *Government Policies for Inward Foreign Direct Investment in Developing Countries: Implications for Human Capital Formation and Income Inequality*, by Dirk Willem te Velde, August 2002.
- Working Paper No. 194, *Foreign Direct Investment and Intellectual Capital Formation in Southeast Asia*, by Bryan K. Ritchie, August 2002.
- Working Paper No. 195, *FDI and Human Capital: A Research Agenda*, by Magnus Blomström and Ari Kokko, August 2002.
- Working Paper No. 196, *Knowledge Diffusion from Multinational Enterprises: The Role of Domestic and Foreign Knowledge-Enhancing Activities*, by Yasuyuki Todo and Koji Miyamoto, August 2002.
- Working Paper No. 197, *Why Are Some Countries So Poor? Another Look at the Evidence and a Message of Hope*, by Daniel Cohen and Marcelo Soto, October 2002.
- Working Paper No. 198, *Choice of an Exchange-Rate Arrangement, Institutional Setting and Inflation: Empirical Evidence from Latin America*, by Andreas Freytag, October 2002.
- Working Paper No. 199, *Will Basel II Affect International Capital Flows to Emerging Markets?*, by Beatrice Weder and Michael Wedow, October 2002.
- Working Paper No. 200, *Convergence and Divergence of Sovereign Bond Spreads: Lessons from Latin America*, by Martin Grandes, October 2002.
- Working Paper No. 201, *Prospects for Emerging-Market Flows amid Investor Concerns about Corporate Governance*, by Helmut Reisen, November 2002.
- Working Paper No. 202, *Rediscovering Education in Growth Regressions*, by Marcelo Soto, November 2002.

- Working Paper No. 203, *Incentive Bidding for Mobile Investment: Economic Consequences and Potential Responses*, by Andrew Charlton, January 2003.
- Working Paper No. 204, *Health Insurance for the Poor? Determinants of participation Community-Based Health Insurance Schemes in Rural Senegal*, by Johannes Jütting, January 2003.
- Working Paper No. 205, *China's Software Industry and its Implications for India*, by Ted Tschang, February 2003.
- Working Paper No. 206, *Agricultural and Human Health Impacts of Climate Policy in China: A General Equilibrium Analysis with Special Reference to Guangdong*, by David O'Connor, Fan Zhai, Kristin Aunan, Terje Berntsen and Haakon Vennemo, March 2003.
- Working Paper No. 207, *India's Information Technology Sector: What Contribution to Broader Economic Development?*, by Nirvikar Singh, March 2003.
- Working Paper No. 208, *Public Procurement: Lessons from Kenya, Tanzania and Uganda*, by Walter Odhiambo and Paul Kamau, March 2003.
- Working Paper No. 209, *Export Diversification in Low-Income Countries: An International Challenge after Doha*, by Federico Bonaglia and Kiichiro Fukasaku, June 2003.
- Working Paper No. 210, *Institutions and Development: A Critical Review*, by Johannes Jütting, July 2003.
- Working Paper No. 211, *Human Capital Formation and Foreign Direct Investment in Developing Countries*, by Koji Miyamoto, July 2003.
- Working Paper No. 212, *Central Asia since 1991: The Experience of the New Independent States*, by Richard Pomfret, July 2003.
- Working Paper No. 213, *A Multi-Region Social Accounting Matrix (1995) and Regional Environmental General Equilibrium Model for India (REGEMI)*, by Maurizio Bussolo, Mohamed Chemingui and David O'Connor, November 2003.
- Working Paper No. 214, *Ratings Since the Asian Crisis*, by Helmut Reisen, November 2003.
- Working Paper No. 215, *Development Redux: Reflections for a New Paradigm*, by Jorge Braga de Macedo, November 2003.
- Working Paper No. 216, *The Political Economy of Regulatory Reform: Telecoms in the Southern Mediterranean*, by Andrea Goldstein, November 2003.
- Working Paper No. 217, *The Impact of Education on Fertility and Child Mortality: Do Fathers Really Matter Less than Mothers?*, by Lucia Breierova and Esther Duflo, November 2003.
- Working Paper No. 218, *Float in Order to Fix? Lessons from Emerging Markets for EU Accession Countries*, by Jorge Braga de Macedo and Helmut Reisen, November 2003.
- Working Paper No. 219, *Globalisation in Developing Countries: The Role of Transaction Costs in Explaining Economic Performance in India*, by Maurizio Bussolo and John Whalley, November 2003.
- Working Paper No. 220, *Poverty Reduction Strategies in a Budget-Constrained Economy: The Case of Ghana*, by Maurizio Bussolo and Jeffery I. Round, November 2003.
- Working Paper No. 221, *Public-Private Partnerships in Development: Three Applications in Timor Leste*, by José Braz, November 2003.
- Working Paper No. 222, *Public Opinion Research, Global Education and Development Co-operation Reform: In Search of a Virtuous Circle*, by Ida Mc Donnell, Henri-Bernard Solignac Lecomte and Liam Wegimont, November 2003.
- Working Paper No. 223, *Building Capacity to Trade: What Are the Priorities?*, by Henry-Bernard Solignac Lecomte, November 2003.
- Working Paper No. 224, *Of Flying Geeks and O-Rings: Locating Software and IT Services in India's Economic Development*, by David O'Connor, November 2003.
- Document de travail No. 225, *Cap Vert: Gouvernance et Développement*, par Jaime Lourenço and Colm Foy, novembre 2003.
- Working Paper No. 226, *Globalisation and Poverty Changes in Colombia*, by Maurizio Bussolo and Jann Lay, November 2003.
- Working Paper No. 227, *The Composite Indicator of Economic Activity in Mozambique (ICAE): Filling in the Knowledge Gaps to Enhance Public-Private Partnership (PPP)*, by Roberto J. Tibana, November 2003.
- Working Paper No. 228, *Economic-Reconstruction in Post-Conflict Transitions: Lessons for the Democratic Republic of Congo (DRC)*, by Graciana del Castillo, November 2003.
- Working Paper No. 229, *Providing Low-Cost Information Technology Access to Rural Communities In Developing Countries: What Works? What Pays?* by Georg Caspary and David O'Connor, November 2003.
- Working Paper No. 230, *The Currency Premium and Local-Currency Denominated Debt Costs in South Africa*, by Martin Grandes, Marcel Peter and Nicolas Pinaud, December 2003.
- Working Paper No. 231, *Macroeconomic Convergence in Southern Africa: The Rand Zone Experience*, by Martin Grandes, December 2003.
- Working Paper No. 232, *Financing Global and Regional Public Goods through ODA: Analysis and Evidence from the OECD Creditor Reporting System*, by Helmut Reisen, Marcelo Soto and Thomas Weithöner, January 2004.
- Working Paper No. 233, *Land, Violent Conflict and Development*, by Nicolas Pons-Vignon and Henri-Bernard Solignac Lecomte, February 2004.
- Working Paper No. 234, *The Impact of Social Institutions on the Economic Role of Women in Developing Countries*, by Christian Morrisson and Johannes Jütting, May 2004.
- Document de travail No. 235, *La condition des femmes en Inde, Kenya, Soudan et Tunisie*, par Christian Morrisson, août 2004.
- Working Paper No. 236, *Decentralisation and Poverty in Developing Countries: Exploring the Impact*, by Johannes Jütting, Céline Kauffmann, Ida Mc Donnell, Holger Osterrieder, Nicolas Pinaud and Lucia Wegner, August 2004.
- Working Paper No. 237, *Natural Disasters and Adaptive Capacity*, by Jeff Dayton-Johnson, August 2004.

- Working Paper No. 238, *Public Opinion Polling and the Millennium Development Goals*, by Jude Fransman, Alphonse L. MacDonnald, Ida Mc Donnell and Nicolas Pons-Vignon, October 2004.
- Working Paper No. 239, *Overcoming Barriers to Competitiveness*, by Orsetta Causa and Daniel Cohen, December 2004.
- Working Paper No. 240, *Extending Insurance? Funeral Associations in Ethiopia and Tanzania*, by Stefan Dercon, Tessa Bold, Joachim De Weerd and Alula Pankhurst, December 2004.
- Working Paper No. 241, *Macroeconomic Policies: New Issues of Interdependence*, by Helmut Reisen, Martin Grandes and Nicolas Pinaud, January 2005.
- Working Paper No. 242, *Institutional Change and its Impact on the Poor and Excluded: The Indian Decentralisation Experience*, by D. Narayana, January 2005.
- Working Paper No. 243, *Impact of Changes in Social Institutions on Income Inequality in China*, by Hiroko Uchimura, May 2005.
- Working Paper No. 244, *Priorities in Global Assistance for Health, AIDS and Population (HAP)*, by Landis MacKellar, June 2005.
- Working Paper No. 245, *Trade and Structural Adjustment Policies in Selected Developing Countries*, by Jens Andersson, Federico Bonaglia, Kiichiro Fukasaku and Caroline Lesser, July 2005.
- Working Paper No. 246, *Economic Growth and Poverty Reduction: Measurement and Policy Issues*, by Stephan Klasen, (September 2005).
- Working Paper No. 247, *Measuring Gender (In)Equality: Introducing the Gender, Institutions and Development Data Base (GID)*, by Johannes P. Jütting, Christian Morrisson, Jeff Dayton-Johnson and Denis Drechsler (March 2006).
- Working Paper No. 248, *Institutional Bottlenecks for Agricultural Development: A Stock-Taking Exercise Based on Evidence from Sub-Saharan Africa* by Juan R. de Laiglesia, March 2006.
- Working Paper No. 249, *Migration Policy and its Interactions with Aid, Trade and Foreign Direct Investment Policies: A Background Paper*, by Theodora Xenogiani, June 2006.
- Working Paper No. 250, *Effects of Migration on Sending Countries: What Do We Know?* by Louka T. Katseli, Robert E.B. Lucas and Theodora Xenogiani, June 2006.
- Document de travail No. 251, *L'aide au développement et les autres flux nord-sud : complémentarité ou substitution ?*, par Denis Cogneau et Sylvie Lambert, juin 2006.
- Working Paper No. 252, *Angel or Devil? China's Trade Impact on Latin American Emerging Markets*, by Jorge Blázquez-Lidoy, Javier Rodríguez and Javier Santiso, June 2006.
- Working Paper No. 253, *Policy Coherence for Development: A Background Paper on Foreign Direct Investment*, by Thierry Mayer, July 2006.
- Working Paper No. 254, *The Coherence of Trade Flows and Trade Policies with Aid and Investment Flows*, by Akiko Suwa-Eisenmann and Thierry Verdier, August 2006.
- Document de travail No. 255, *Structures familiales, transferts et épargne : examen*, par Christian Morrisson, août 2006.
- Working Paper No. 256, *Ulysses, the Sirens and the Art of Navigation: Political and Technical Rationality in Latin America*, by Javier Santiso and Laurence Whitehead, September 2006.
- Working Paper No. 257, *Developing Country Multinationals: South-South Investment Comes of Age*, by Dilek Aykut and Andrea Goldstein, November 2006.
- Working Paper No. 258, *The Usual Suspects: A Primer on Investment Banks' Recommendations and Emerging Markets*, by Sebastián Nieto-Parra and Javier Santiso, January 2007.
- Working Paper No. 259, *Banking on Democracy: The Political Economy of International Private Bank Lending in Emerging Markets*, by Javier Rodríguez and Javier Santiso, March 2007.
- Working Paper No. 260, *New Strategies for Emerging Domestic Sovereign Bond Markets*, by Hans Blommestein and Javier Santiso, April 2007.
- Working Paper No. 261, *Privatisation in the MEDA region. Where do we stand?*, by Céline Kauffmann and Lucia Wegner, July 2007.
- Working Paper No. 262, *Strengthening Productive Capacities in Emerging Economies through Internationalisation: Evidence from the Appliance Industry*, by Federico Bonaglia and Andrea Goldstein, July 2007.
- Working Paper No. 263, *Banking on Development: Private Banks and Aid Donors in Developing Countries*, by Javier Rodríguez and Javier Santiso, November 2007.
- Working Paper No. 264, *Fiscal Decentralisation, Chinese Style: Good for Health Outcomes?*, by Hiroko Uchimura and Johannes Jütting, November 2007.
- Working Paper No. 265, *Private Sector Participation and Regulatory Reform in Water supply: the Southern Mediterranean Experience*, by Edouard Pérard, January 2008.
- Working Paper No. 266, *Informal Employment Re-loaded*, by Johannes Jütting, Jante Parlevliet and Theodora Xenogiani, January 2008.
- Working Paper No. 267, *Household Structures and Savings: Evidence from Household Surveys*, by Juan R. de Laiglesia and Christian Morrisson, January 2008.
- Working Paper No. 268, *Prudent versus Imprudent Lending to Africa: From Debt Relief to Emerging Lenders*, by Helmut Reisen and Sokhna Ndoye, February 2008.
- Working Paper No. 269, *Lending to the Poorest Countries: A New Counter-Cyclical Debt Instrument*, by Daniel Cohen, Hélène Djoufelkit-Cottenet, Pierre Jacquet and Cécile Valadier, April 2008.
- Working Paper No. 270, *The Macro Management of Commodity Booms: Africa and Latin America's Response to Asian Demand*, by Rolando Avendaño, Helmut Reisen and Javier Santiso, August 2008.

- Working Paper No. 271, *Report on Informal Employment in Romania*, by Jante Parlevliet and Theodora Xenogiani, July 2008.
- Working Paper No. 272, *Wall Street and Elections in Latin American Emerging Democracies*, by Sebastián Nieto-Parra and Javier Santiso, October 2008.
- Working Paper No. 273, *Aid Volatility and Macro Risks in LICs*, by Eduardo Borensztein, Julia Cage, Daniel Cohen and Cécile Valadier, November 2008.
- Working Paper No. 274, *Who Saw Sovereign Debt Crises Coming?*, by Sebastián Nieto-Parra, November 2008.
- Working Paper No. 275, *Development Aid and Portfolio Funds: Trends, Volatility and Fragmentation*, by Emmanuel Frot and Javier Santiso, December 2008.
- Working Paper No. 276, *Extracting the Maximum from EITI*, by Dilan Ölcer, February 2009.
- Working Paper No. 277, *Taking Stock of the Credit Crunch: Implications for Development Finance and Global Governance*, by Andrew Mold, Sebastian Paulo and Annalisa Prizzon, March 2009.
- Working Paper No. 278, *Are All Migrants Really Worse Off in Urban Labour Markets? New Empirical Evidence from China*, by Jason Gagnon, Theodora Xenogiani and Chunbing Xing, June 2009.
- Working Paper No. 279, *Herding in Aid Allocation*, by Emmanuel Frot and Javier Santiso, June 2009.
- Working Paper No. 280, *Coherence of Development Policies: Ecuador's Economic Ties with Spain and their Development Impact*, by Iliana Olivie, July 2009.
- Working Paper No. 281, *Revisiting Political Budget Cycles in Latin America*, by Sebastián Nieto-Parra and Javier Santiso, August 2009.
- Working Paper No. 282, *Are Workers' Remittances Relevant for Credit Rating Agencies?*, by Rolando Avendaño, Norbert Gaillard and Sebastián Nieto-Parra, October 2009.
- Working Paper No. 283, *Are SWF Investments Politically Biased? A Comparison with Mutual Funds*, by Rolando Avendaño and Javier Santiso, December 2009.
- Working Paper No. 284, *Crushed Aid: Fragmentation in Sectoral Aid*, by Emmanuel Frot and Javier Santiso, January 2010.
- Working Paper No. 285, *The Emerging Middle Class in Developing Countries*, by Homi Kharas, January 2010.
- Working Paper No. 286, *Does Trade Stimulate Innovation? Evidence from Firm-Product Data*, by Ana Margarida Fernandes and Caroline Paunov, January 2010.
- Working Paper No. 287, *Why Do So Many Women End Up in Bad Jobs? A Cross-Country Assessment*, by Johannes Jütting, Angela Luci and Christian Morrisson, January 2010.
- Working Paper No. 288, *Innovation, Productivity and Economic Development in Latin America and the Caribbean*, by Christian Daude, February 2010.
- Working Paper No. 289, *South America for the Chinese? A Trade-Based Analysis*, by Eliana Cardoso and Márcio Holland, April 2010.
- Working Paper No. 290, *On the Role of Productivity and Factor Accumulation in Economic Development in Latin America and the Caribbean*, by Christian Daude and Eduardo Fernández-Arias, April 2010.